

District I
1625 N. French Dr., Hobbs, NM 88240
Phone: (575) 393-6161 Fax: (575) 393-0720
District II
811 S. First St., Artesia, NM 88210
Phone: (575) 748-1283 Fax: (575) 748-9720
District III
1000 Rio Brazos Road, Aztec, NM 87410
Phone: (505) 334-6178 Fax: (505) 334-6170
District IV
1220 S. St. Francis Dr., Santa Fe, NM 87505
Phone: (505) 476-3460 Fax: (505) 476-3462

State of New Mexico
Energy, Minerals & Natural Resources Department
OIL CONSERVATION DIVISION
1220 South St. Francis Dr.
Santa Fe, NM 87505

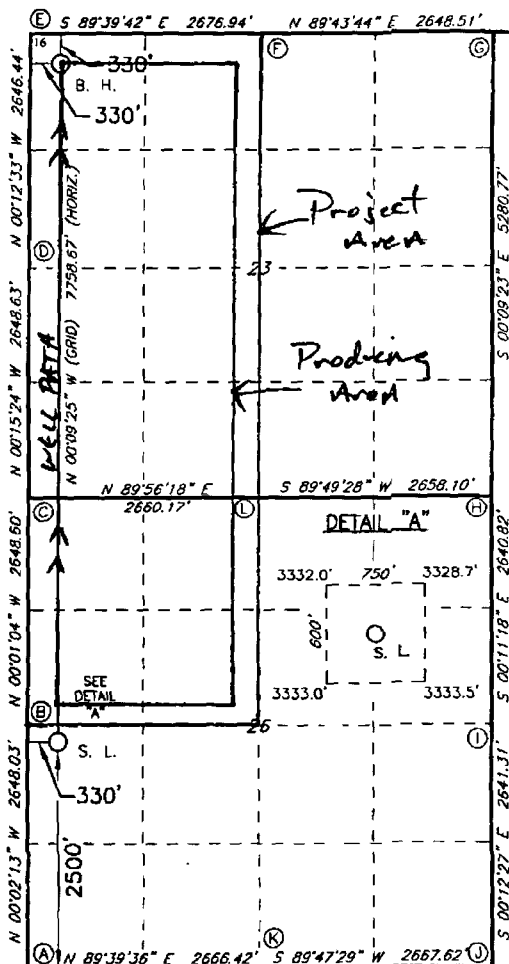
Form C-102
Revised August 1, 2011
Submit one copy to appropriate
District Office

☒ AMENDED REPORT
New Pool & Code
2/1/17

WELL LOCATION AND ACREAGE DEDICATION PLAT

1 API Number 30 015 43798		2 Pool Code 84335 98200		3 Pool Name Purple Sage Ross Ranch Wolfcamp (GMS)	
4 Property Code 316248		5 Property Name ARMSTRONG 26123 WIED FED COM			6 Well Number 2H
7 GRID NO. 14744		8 Operator Name MEWBOURNE OIL COMPANY			9 Elevation 3331'
10 Surface Location					
UL or lot no. L	Section 26	Township 25S	Range 31E	Lot Idn 2500	Feet from the North/South line SOUTH 330 East/West line WEST County EDDY
11 Bottom Hole Location If Different From Surface					
UL or lot no. D	Section 23	Township 25S	Range 31E	Lot Idn 330	Feet from the North/South line NORTH 330 East/West line WEST County EDDY
12 Dedicated Acres 480	13 Joint or Infill	14 Consolidation Code	15 Order No. ~ Requires NSP ~ R-14262		

No allowable will be assigned to this completion until all interest have been consolidated or a non-standard unit has been approved by the division.



GEODETIC DATA
NAD 27 GRID - NM EAST
SURFACE LOCATION
N: 400859.6 - E: 678821.5
LAT: 32.10076262° N
LONG: 103.75585189° W
BOTTOM HOLE
N: 406616.8 - E: 678800.2
LAT: 32.12208664° N
LONG: 103.75578624° W
CORNER DATA
NAD 27 GRID - NM EAST
A: FOUND BRASS CAP "1939"
N: 398359.0 - E: 678493.1
B: FOUND BRASS CAP "1939"
N: 401006.5 - E: 678491.4
C: CALCULATED CORNER
N: 403654.6 - E: 678490.6
D: FOUND BRASS CAP "1939"
N: 406302.7 - E: 678478.7
E: CALCULATED CORNER
N: 408948.7 - E: 678469.1
F: FOUND BRASS CAP "1939"
N: 406932.9 - E: 681145.4
G: FOUND 2" PIPE
N: 408945.4 - E: 683793.4
H: FOUND BRASS CAP "1939"
N: 403655.6 - E: 683807.8
I: FOUND BRASS CAP "1939"
N: 401025.3 - E: 683816.5
J: FOUND BRASS CAP "1939"
N: 398384.6 - E: 683826.1
K: FOUND BRASS CAP "1939"
N: 398374.8 - E: 681159.0
L: FOUND BRASS CAP "1939"
N: 403657.5 - E: 681150.3

17 OPERATOR CERTIFICATION

I hereby certify that the information contained herein is true and complete to the best of my knowledge and belief, and that this organization either owns a working interest or unleased mineral interest in the land including the proposed bottom hole location or has a right to drill this well at this location pursuant to a contract with an owner of such a mineral or working interest, or to a voluntary pooling agreement or a compulsory pooling order heretofore entered by the division.

Signature: *B. R. Bishop* Date: 3-11-16
Printed Name: BRANLEY BISHOP

E-mail Address

18 SURVEYOR CERTIFICATION

I hereby certify that the well location shown on this plat was plotted from field notes of actual surveys made by me or under my supervision, and that the same is true and correct to the best of my belief.

12-04-2015

Date of Survey

Signature and Seal of Professional Surveyor

19680

Certificate Number

