

District I  
1625 N. French Dr., Hobbs, NM 88240  
Phone: (575) 393-6161 Fax: (575) 393-0720  
District II  
811 S. First St., Artesia, NM 88210  
Phone: (575) 748-1283 Fax: (575) 748-9720  
District III  
1000 Rio Brazos Road, Aztec, NM 87410  
Phone: (505) 334-6178 Fax: (505) 334-6170  
District IV  
1220 S. St. Francis Dr., Santa Fe, NM 87505  
Phone: (505) 476-3460 Fax: (505) 476-3462

State of New Mexico  
Energy, Minerals & Natural Resources Department  
OIL CONSERVATION DIVISION  
1220 South St. Francis Dr.  
Santa Fe, NM 87505

Form C-102  
Revised August 1, 2011  
Submit one copy to appropriate  
District Office

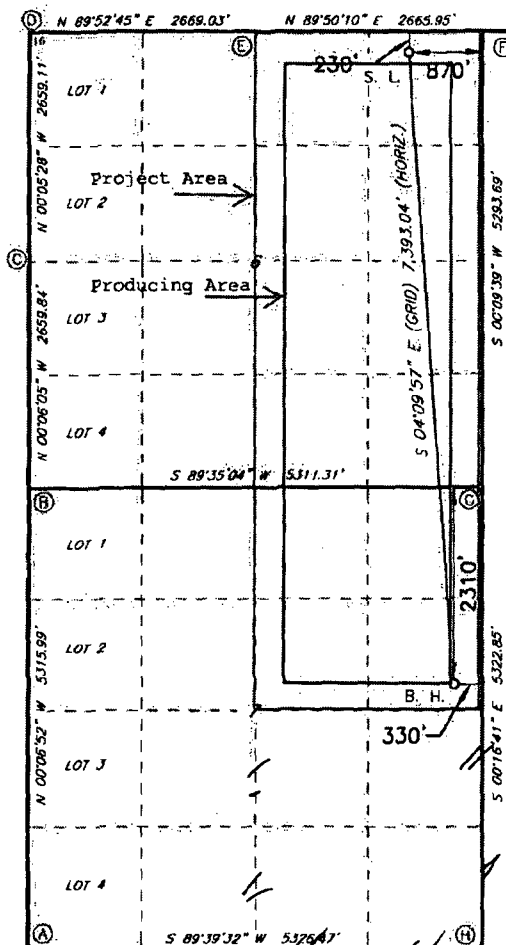
☒ AMENDED REPORT

21117

WELL LOCATION AND ACREAGE DEDICATION PLAT

1 API Number 30-015-43802		2 Pool Code <del>98220</del>		3 Pool Name PURPLE SAGE <del>Black River Wolfcamp East (Gas)</del>	
4 Property Code <del>316249</del> 316770		5 Property Name MOTLEY 6/7 WOAHH FEE COM			6 Well Number 1H
7 GRID NO. 14744		8 Operator Name MEWBOURNE OIL COMPANY			9 Elevation 3101'
10 Surface Location					
UL or lot no. A	Section 6	Township 24S	Range 28E	Lot Idn 230	Feet from the North/South line 870
				Feet from the East/West line EAST	County EDDY
11 Bottom Hole Location If Different From Surface					
UL or lot no. H	Section 7	Township 24S	Range 28E	Lot Idn 2310	Feet from the North/South line 330
				Feet from the East/West line EAST	County EDDY
12 Dedicated Acres 480-639.88		13 Joint or Infill		14 Consolidation Code R-14262	
15 Order No.					

No allowable will be assigned to this completion until all interest have been consolidated or a non-standard unit has been approved by the division.



GEODETIC DATA  
NAD 27 GRID - NM EAST  
SURFACE LOCATION  
N 45599.9 - E 565772.7  
LAT: 32.25348160° N  
LONG: 104.12057267° W  
BOTTOM HOLE  
N 448628.1 - E 566308.6  
LAT: 32.23321381° N  
LONG: 104.11888344° W  
CORNER DATA  
NAD 27 GRID - NM EAST  
A: FOUND BRASS CAP "1942"  
N 445586.7 - E 561329.0  
B: FOUND BRASS CAP "1942"  
N 450901.4 - E 561318.4  
C: FOUND BRASS CAP "1942"  
N 453560.6 - E 561313.6  
D: FOUND BRASS CAP "1942"  
N 456219.1 - E 561309.4  
E: FOUND BRASS CAP "1942"  
N 456224.8 - E 563977.8  
F: FOUND BRASS CAP "1942"  
N 456232.4 - E 566643.1  
G: FOUND ALUM CAP ILLEGIBLE  
N 450939.9 - E 566628.3  
H: CALCULATED CORNER  
N 445618.4 - E 566654.1

17 OPERATOR CERTIFICATION

I hereby certify that the information contained herein is true and complete to the best of my knowledge and belief, and that this organization either owns a working interest or leased mineral interest in the land including the proposed bottom hole location or has a right to drill this well at this location pursuant to a contract with an owner of such a mineral or working interest, or to a voluntary pooling agreement or a compulsory pooling order by the division.

Signature: *Bradley Bishop*  
Printed Name: Bradley Bishop  
Date: \_\_\_\_\_  
E-mail Address: \_\_\_\_\_

18 SURVEYOR CERTIFICATION

I hereby certify that the well location shown on this plat was plotted from field notes of actual surveys made by me or under my supervision, and that the same is true and correct to the best of my belief.

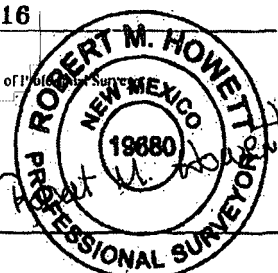
9-1-2016

Date of Survey

Signature and Seal of Professional Surveyor

19880

Certificate Number



RRC - Firm No.: TX 10193838 NM 4655451 - Job No.: LS1603122A