

DISTRICT I
1625 N. French Dr., Hobbs, NM 88240
Phone: (575) 393-6161 Fax: (575) 393-0720
DISTRICT II
811 S. First St., Artesia, NM 88210
Phone: (575) 748-1283 Fax: (575) 748-9720
DISTRICT III
1000 Rio Bureau Rd., Aztec, NM 87410
Phone: (505) 334-6178 Fax: (505) 334-6170
DISTRICT IV
1210 S. St. Francis Dr., Santa Fe, NM 87505
Phone: (505) 476-3460 Fax: (505) 476-3462

State of New Mexico

Energy, Minerals & Natural Resources Department

OIL CONSERVATION DIVISION

1220 South St. Francis Dr.
Santa Fe, New Mexico 87505

Form C-102

Revised August 1, 2011

Submit one copy to appropriate
District Office

☒ AMENDED REPORT

APR 25 2017

RECEIVED

WELL LOCATION AND ACREAGE DEDICATION PLAT

| | | |
|----------------------------|---|--|
| API Number 30-015-43416 | Pool Code 98220 | Pool Name PURPLE SAGE - WOLFCAMP GAS POOL |
| Property Code | Property Name EAST PECOS FEDERAL 22 | Well Number 10H |
| OGRID No. 246289 | Operator Name RKI EXPLORATION & PRODUCTION | Elevation 2879 |

Surface Location

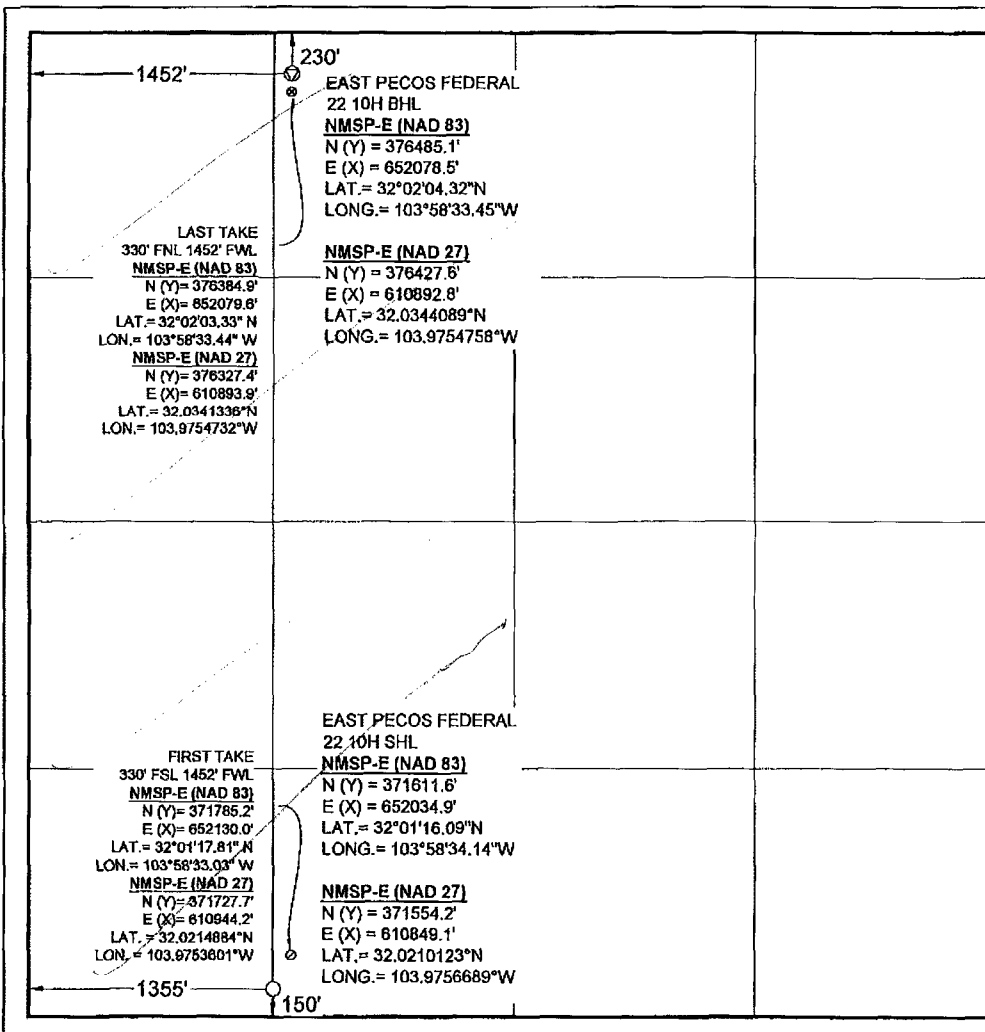
| UL or lot no. | Section | Township | Range | Lot Idn | Feet from the | North/South line | Feet from the | East/West line | County |
|---------------|---------|----------|-------|---------|---------------|------------------|---------------|----------------|--------|
| N | 22 | 26S | 29E | | 150 | S | 1355 | W | EDDY |

Bottom Hole Location If Different From Surface

| UL or lot no. | Section | Township | Range | Lot Idn | Feet from the | North/South line | Feet from the | East/West line | County |
|---------------|---------|----------|-------|---------|---------------|------------------|---------------|----------------|--------|
| C | 22 | 26S | 29E | | 230 | N | 1452 | W | EDDY |

| | | | |
|--------------------------|-----------------|-------------------|-----------|
| Dedicated Acres 320.0 | Joint or Infill | Consolidated Code | Order No. |
|--------------------------|-----------------|-------------------|-----------|

No allowable will be assigned to this completion until all interests have been consolidated or a non-standard unit has been approved by the division.



OPERATOR CERTIFICATION

I hereby certify that the information contained herein is true and complete to the best of my knowledge and belief, and that this organization either owns a working interest or unleased mineral interest in the land including the proposed bottom hole location or has a right to drill this well at this location pursuant to a contract with an owner of such a mineral or working interest, or to voluntary pooling agreement or a compulsory pooling order heretofore entered by the division.

Signature: Jessica Dellance Date: 4/14/17

Print Name: Jessica Dellance

E-mail Address: Jessica.Dellance@wpcenergy.com

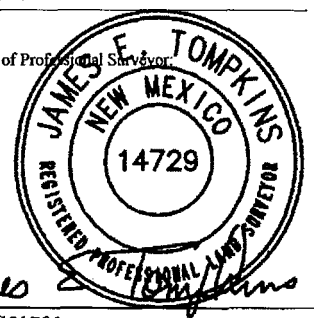
SURVEYORS CERTIFICATION

I hereby certify that the well location shown on this plat was plotted from field notes of actual surveys made by me or under my supervision, and that the same is true and correct to the best of my belief.

APRIL 11, 2017

Date of Survey

Signature and Seal of Professional Surveyor



Job No.: WTC51791

JAMES E. TOMPKINS 14729

Certificate Number