

District I
1625 N. French Dr., Hobbs, NM 88240
Phone: (575) 393-6161 Fax: (575) 393-0720
District II
811 S. First St., Artesia, NM 88210
Phone: (575) 748-1283 Fax: (575) 748-9720
District III
1000 Rio Brazos Road, Aztec, NM 87410
Phone: (505) 334-6178 Fax: (505) 334-6170
District IV
1220 S. St. Francis Dr., Santa Fe, NM 87505
Phone: (505) 476-3460 Fax: (505) 476-3462

State of New Mexico **NM OIL CONSERVATION**
Energy, Minerals & Natural Resources Department
ARTESIA DISTRICT
OIL CONSERVATION DIVISION
1220 South St. Francis Dr.
Santa Fe, NM 87505

Form C-102
Revised August 1, 2011
Submit one copy to appropriate
District Office

☐ AMENDED REPORT

RECEIVED

WELL LOCATION AND ACREAGE DEDICATION PLAT

¹ API Number 30015-43773	² Pool Code 98220	³ Pool Name Purple Sage; Wolfcamp (Gas)
⁴ Property Code 316191	⁵ Property Name PINTAIL 23-26 FEDERAL COM	⁶ Well Number 10H
⁷ OGRID No. 162683	⁸ Operator Name CIMAREX ENERGY CO. Of Colorado	⁹ Elevation 3298.7'

¹⁰ Surface Location

UL or lot no.	Section	Township	Range	Lot Idn	Feet from the	North/South line	Feet from the	East/West line	County
C	23	25 S	26 E		330	NORTH	1980	WEST	EDDY

¹¹ Bottom Hole Location If Different From Surface

UL or lot no.	Section	Township	Range	Lot Idn	Feet from the	North/South line	Feet from the	East/West line	County
N	26	25 S	26 E		329	SOUTH	2302	WEST	EDDY
¹² Dedicated Acres 640	¹³ Joint or Infill	¹⁴ Consolidation Code	¹⁵ Order No.						

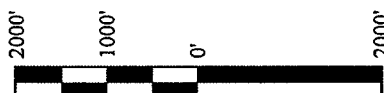
No allowable will be assigned to this completion until all interests have been consolidated or a non-standard unit has been approved by the division.

¹⁶ NOTE:

Distances referenced on plat to section lines are perpendicular.

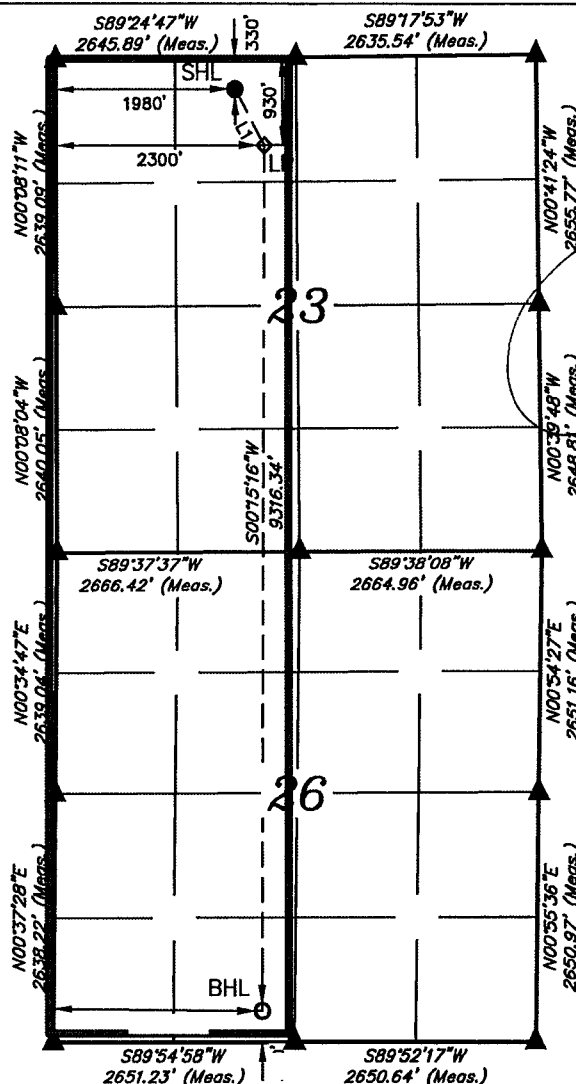
NAD 83 (SURFACE HOLE LOCATION)
LATITUDE = 32°07'18.10" (32.121694)
LONGITUDE = 104°15'56.21" (104.265614)
NAD 27 (SURFACE HOLE LOCATION)
LATITUDE = 32°07'17.67" (32.121575)
LONGITUDE = 104°15'54.42" (104.265117)
STATE PLANE NAD 83 (N.M. EAST)
N: 408015.18 E: 562301.64
STATE PLANE NAD 27 (N.M. EAST)
N: 407958.04 E: 521118.71

LINE TABLE		
LINE	DIRECTION	LENGTH
L1	S28°18'28"E	677.79'



SCALE
REVISED BY: K.B. 03-25-16

- ▲ = SECTION CORNERS LOCATED.
- = SURFACE HOLE LOCATION.
- = BOTTOM HOLE.
- ◇ = LANDING POINT.



¹⁷ OPERATOR
CERTIFICATION

I hereby certify that the information contained herein is true and complete to the best of my knowledge and belief, and that this organization either owns a working interest or unleased mineral interest in the land including the proposed bottom hole location or has a right to drill this well at this location pursuant to a contract with an owner of such a mineral or working interest, or to a voluntary pooling agreement or a compulsory pooling order heretofore entered by the division.

Signature: *Terri Stathem* Date: 4-21-17

Printed Name: Terri Stathem

tstathem@cimarex.com

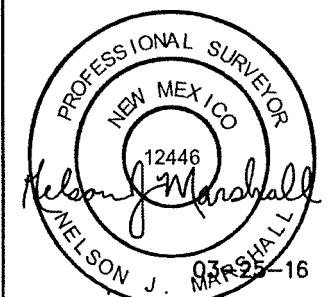
E-mail Address

¹⁸ SURVEYOR
CERTIFICATION

I hereby certify that the well location shown on this plat was plotted from field notes of actual surveys made by me or under my supervision, and that the same is true and correct to the best of my belief.

January 20, 2016

Date of Survey
Signature and Seal of Professional Surveyor:



Certificate Number: