

DISTRICT I
1625 N. French Dr., Hobbs, NM 88240
Phone: (575) 393-6161 Fax: (575) 393-0720

DISTRICT II
811 S. First St., Artesia, NM 88210
Phone: (575) 748-1283 Fax: (575) 748-9720

DISTRICT III
1000 Rio Brazos Road, Aztec, NM 87410
Phone: (505) 334-6178 Fax: (505) 334-6170

DISTRICT IV
1220 S. St. Francis Dr., Santa Fe, NM 87505
Phone: (505) 476-3460 Fax: (505) 476-3462

State of New Mexico
Energy, Minerals & Natural Resources Department
OIL CONSERVATION DIVISION
1220 South St. Francis Dr.
Santa Fe, New Mexico 87505

Form C-102
Revised August 1, 2011
Submit one copy to appropriate
District Office

MAH 06 2017

AMENDED REPORT

RECEIVED

WELL LOCATION AND ACREAGE DEDICATION PLAT

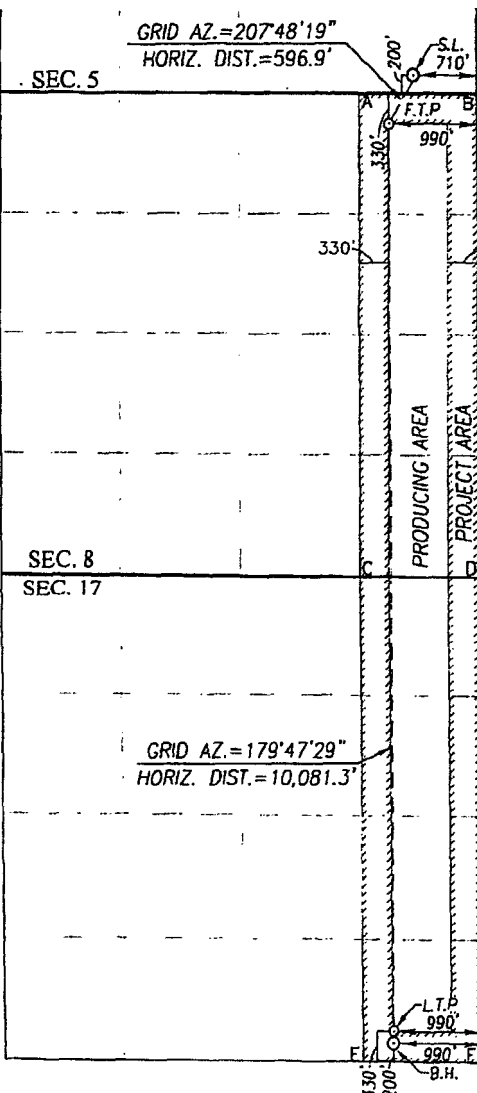
API Number 30-05-43928	Pool Code 96817	Pool Name Willow Lake, Bone Spring, etc.
Property Code 31121 (317429)	Property Name CORRAL CANYON FEDERAL	Well Number 16H
OGRID No. 006380	Operator Name XTO ENERGY	Elevation 2947'

UL or lot No.	Section	Township	Range	Lot Idn	Feet from the	North/South line	Feet from the	East/West line	County
P	5	25-S	29-E		200	SOUTH	710	EAST	EDDY

UL or lot No.	Section	Township	Range	Lot Idn	Feet from the	North/South line	Feet from the	East/West line	County
P	17	25-S	29-E		200	SOUTH	990	EAST	EDDY

Dedicated Acres 3.00	Joint or Infill	Consolidation Code	Order No.
-------------------------	-----------------	--------------------	-----------

NO ALLOWABLE WILL BE ASSIGNED TO THIS COMPLETION UNTIL ALL INTERESTS HAVE BEEN CONSOLIDATED OR A NON-STANDARD UNIT HAS BEEN APPROVED BY THE DIVISION



SCALE: 1"=2000'

GEODETIC COORDINATES	GEODETIC COORDINATES
NAD 27 NME	NAD 83 NME
SURFACE LOCATION	SURFACE LOCATION
Y=419304.3 N	Y=419362.7 N
X=603207.7 E	X=644392.2 E
LAT.=32.152345° N	LAT.=32.152468° N
LONG.=103.999848° W	LONG.=104.000335° W
FIRST TAKE POINT	FIRST TAKE POINT
NAD 27 NME	NAD 83 NME
Y=418776.4 N	Y=418834.9 N
X=602929.4 E	X=644113.9 E
LAT.=32.150896° N	LAT.=32.151020° N
LONG.=104.000752° W	LONG.=104.001239° W

CORNER COORDINATES TABLE

NAD 27 NME
A - Y=419108.9 N, X=602590.6 E
B - Y=419099.0 N, X=603918.7 E
C - Y=413809.9 N, X=602597.8 E
D - Y=413795.5 N, X=603926.3 E
E - Y=408501.6 N, X=602632.0 E
F - Y=408485.6 N, X=603957.1 E

NAD 83 NME
A - Y=419167.3 N, X=643775.1 E
B - Y=419157.4 N, X=645103.2 E
C - Y=413868.2 N, X=643782.4 E
D - Y=413853.9 N, X=645110.9 E
E - Y=408559.8 N, X=643816.7 E
F - Y=408543.8 N, X=645141.8 E

LAST TAKE POINT	LAST TAKE POINT
NAD 27 NME	NAD 83 NME
Y=408827.5 N	Y=408885.8 N
X=602965.4 E	X=644150.1 E
LAT.=32.123546° N	LAT.=32.123670° N
LONG.=104.000735° W	LONG.=104.001221° W
BOTTOM HOLE LOCATION	BOTTOM HOLE LOCATION
NAD 27 NME	NAD 83 NME
Y=408697.5 N	Y=408755.8 N
X=602965.8 E	X=644150.6 E
LAT.=32.123189° N	LAT.=32.123313° N
LONG.=104.000735° W	LONG.=104.001221° W

OPERATOR CERTIFICATION

I hereby certify that the information herein is true and complete to the best of my knowledge and belief, and that this organization either owns a working interest or unleased mineral interest in the land including the proposed bottom hole location or has a right to drill this well at this location pursuant to a contract with an owner of such mineral or working interest, or to a voluntary pooling agreement or a compulsory pooling order heretofore entered by the division.

Signature: *Abraham Rabadiue* Date: 11-17-16

Printed Name: *Abraham Rabadiue*

E-mail Address: *abrahamr@xtoenergy.com*

SURVEYOR CERTIFICATION

I hereby certify that the well location shown on this plat was plotted from field notes of actual surveys made by me or under my supervision, and that the same is true and correct to the best of my belief.

MARCH 5, 2014

Date of Survey
Signature & Seal of Professional Surveyor:

Signature: *Ronald J. Eidson*
Certificate Number: *12641*
Gary C. Eidson 12641
Ronald J. Eidson 32339

ACK REL. W.O.:1411021-REV:112106 JWSC W.O.:16.13.0890