

District I
1625 N. French Dr., Hobbs, NM 88240
Phone: (575) 393-6161 Fax: (575) 393-0720
District II
811 S. First St., Artesia, NM 88210
Phone: (575) 748-1283 Fax: (575) 748-9720
District III
1000 Rio Brazos Road, Aztec, NM 87410
Phone: (505) 334-6178 Fax: (505) 334-6170
District IV
1220 S. St. Francis Dr., Santa Fe, NM 87505
Phone: (505) 476-3460 Fax: (505) 476-3462

State of New Mexico
Energy, Minerals & Natural Resources Department
OIL CONSERVATION DIVISION
1220 South St. Francis Dr.
Santa Fe, NM 87505

Form C-102
Revised August 1, 2011
Submit one copy to appropriate
District Office

☐ AMENDED REPORT

WELL LOCATION AND ACREAGE DEDICATION PLAT

¹ APT Number 30-015-42168	² Pool Code 30215	³ Pool Name Hay Hollow; Bone Spring
⁴ Property Code	⁵ Property Name HORNSBY 35 FEDERAL COM	⁶ Well Number 7H
⁷ OGRID No. 215099	⁸ Operator Name CIMAREX ENERGY CO.	⁹ Elevation 3240.6'

" Surface Location

UL or lot no.	Section	Township	Range	Lot Idn	Feet from the	North/South line	Feet from the	East/West line	County
2	35	26S	27E		290	SOUTH	2050	EAST	EDDY

" Bottom Hole Location If Different From Surface

UL or lot no.	Section	Township	Range	Lot Idn	Feet from the	North/South line	Feet from the	East/West line	County
C	26	26S	27E		330	NORTH	2590	WEST	EDDY

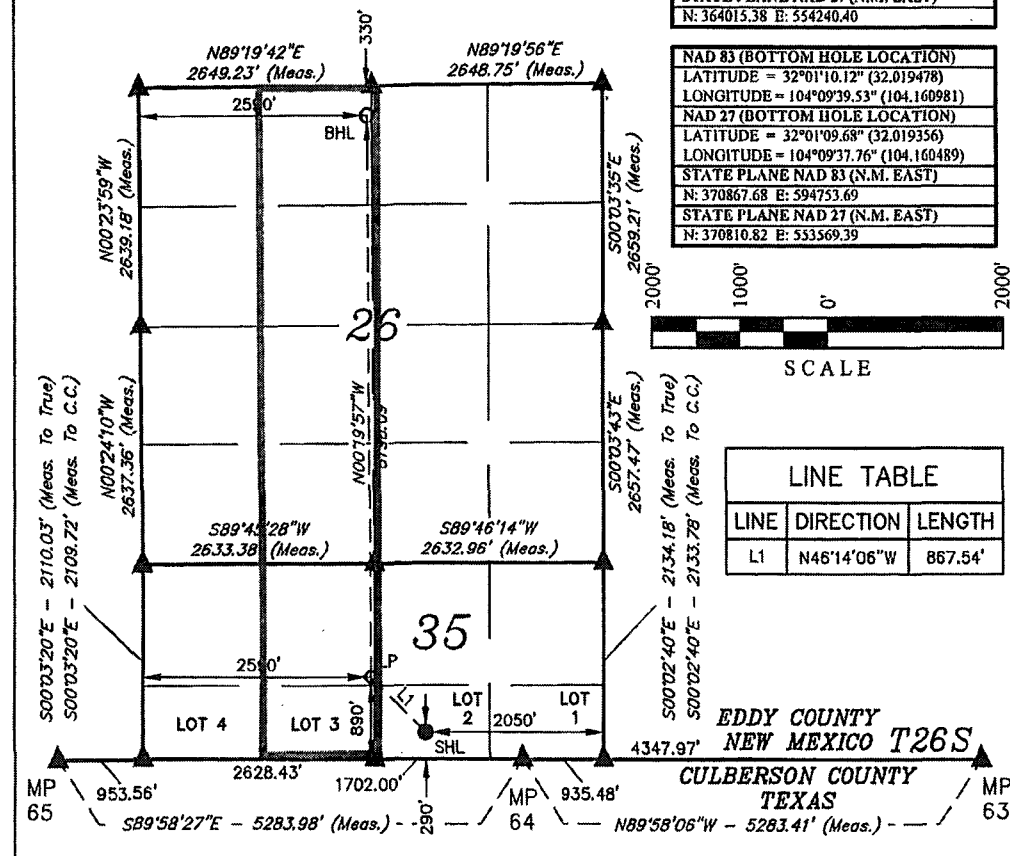
¹² Dedicated Acres 224.13	¹³ Joint or Infill	¹⁴ Consolidation Code	¹⁵ Order No.
---	-------------------------------	----------------------------------	-------------------------

No allowable will be assigned to this completion until all interests have been consolidated or a non-standard unit has been approved by the division.

- = SURFACE HOLE LOCATION
- ◆ = LANDING POINT
- = BOTTOM HOLE LOCATION
- ▲ = SECTION CORNER LOCATED

NOTE:
Distances referenced on plat
to section lines are
perpendicular.

REV: 1 10-28-16 D.P. (BHL MOVE)



NAD 83 (SURFACE HOLE LOCATION)
LATITUDE = 32°00'02.86" (32.000794)
LONGITUDE = 104°09'31.96" (104.158878)
NAD 27 (SURFACE HOLE LOCATION)
LATITUDE = 32°00'02.42" (32.000672)
LONGITUDE = 104°09'30.10" (104.158361)
STATE PLANE NAD 83 (N.M. EAST)
N: 364072.12 E: 595424.85
STATE PLANE NAD 27 (N.M. EAST)
N: 364015.38 E: 554240.40

NAD 83 (BOTTOM HOLE LOCATION)
LATITUDE = 32°01'10.12" (32.019478)
LONGITUDE = 104°09'39.53" (104.160981)
NAD 27 (BOTTOM HOLE LOCATION)
LATITUDE = 32°01'09.68" (32.019356)
LONGITUDE = 104°09'37.76" (104.160489)
STATE PLANE NAD 83 (N.M. EAST)
N: 370867.68 E: 594753.69
STATE PLANE NAD 27 (N.M. EAST)
N: 370810.82 E: 553569.39

" OPERATOR
CERTIFICATION

I hereby certify that the information contained herein is true and complete to the best of my knowledge and belief, and that this organization either owns a working interest or unleased mineral interest in the land including the proposed bottom hole location or has a right to drill this well at this location pursuant to a contract with an owner of such a mineral or working interest, or to a voluntary pooling agreement or a compulsory pooling order heretofore entered by the division.

Signature: *Aricka Easterling* Date: 11/21/16

Aricka Easterling

Printed Name

aeasterling@cimarex.com

E-mail Address

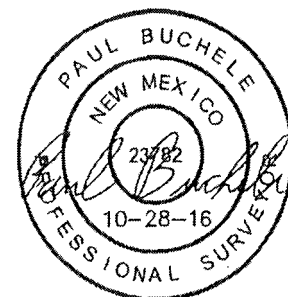
" SURVEYOR
CERTIFICATION

I hereby certify that the well location shown on this plat was plotted from field notes of actual surveys made by me or under my supervision, and that the same is true and correct to the best of my belief.

October 5, 2015

Date of Survey

Signature and Seal of Professional Surveyor:



Certificate Number: