

District I
1625 N. French Dr., Hobbs, NM 88240
Phone: (575) 393-6161 Fax: (575) 393-0720
District II
811 S. First St. Artesia, NM 88210
Phone: (575) 748-1283 Fax: (575) 748-9720
District III
1000 Rio Brazos Rd., Aztec, NM 87410
Phone: (505) 334-6178 Fax (505) 334-6170
District IV
1220 S. St. Francis Dr., Santa Fe, NM 87505
Phone: (505) 476-3460 Fax (505) 476-3462

State of New Mexico
Energy, Minerals & Natural Resources
Oil Conservation Division
1220 S. St. Francis Dr.
Santa Fe, NM 87505

NM OIL CONSERVATION Form C-101
ARTESIA DISTRICT Revised July 18, 2013
AUG 23 2017
☐ AMENDED REPORT
RECEIVED

APPLICATION FOR PERMIT TO DRILL, RE-ENTER, DEEPEN, PLUGBACK, OR ADD A ZONE

¹ Operator Name and Address XTO ENERGY INC 500 W. ILLINOIS, STE. 100, MIDLAND, TX 79701		² OGRID Number 005380
⁴ Property Code 316423	⁵ Property Name REMUDA NORTH 31 STATE	³ API Number 30-015-44414 ⁶ Well No. 123H

⁷ Surface Location

UL- lot	Section	Township	Range	Lot.Idn	Feet from	N/S Line	Feet from	E/W Line	County
K	31	23S	30E		2280	SOUTH	1965	WEST	EDDY

⁸ Proposed Bottom Hole Location

UL- lot	Section	Township	Range	Lot.Idn	Feet from	N/S Line	Feet from	E/W Line	County
C	19	23S	30E		200	NORTH	1677	WEST	EDDY

⁹ Pool Information

Pool Name	Pool Code
WILDCAT	0

Additional Well Information

¹¹ Work Type NEW WELL	¹² Well Type OIL	¹³ Cable/Rotary	¹⁴ Lease Type STATE	¹⁵ Ground Level Elevation 3210'
¹⁶ Multiple N	¹⁷ Proposed Depth 24,672'	¹⁸ Formation WOLFCAMP	¹⁹ Contractor	²⁰ Spud Date
Depth to Groundwater		Distance from nearest fresh water well		Distance to nearest surface water

☒ We will be using a closed-loop system in lieu of lined pits

²¹ Proposed Casing and Cement Program

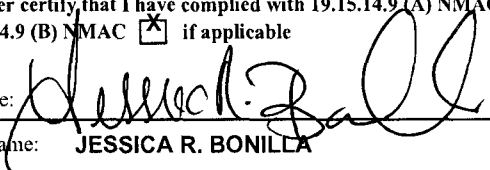
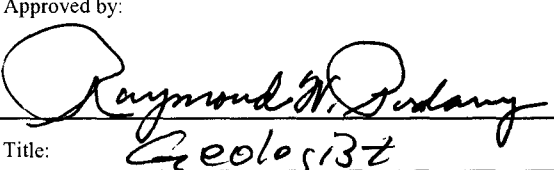
Type	Hole Size	Casing Size	Casing weight/ft	Setting Depth	Sacks of Cement	Estimated TOC
SURF	17.5	13.375	54.5	550	475	0
INT1	12.25	9.625	36	3450	828	0
PROD	8.75	5.5	17	24672	2998	0

Casing/Cement Program: Additional Comments

Prod: 8-3/4" hole fr/0-11,172; 8-1/2" hole fr/11172-24672'. 5-1/2" P-110 csg run from 0-24672'

²² Proposed Blowout Prevention Program

Type	Working Pressure	Test Pressure	Maintenance
DOUBLE RAM	5000	5000	CAMERON

²³ I hereby certify that the information given above is true and complete to the best of my knowledge and belief. I further certify that I have complied with 19.15.14.9 (A) NMAC <input checked="" type="checkbox"/> and/or 19.15.14.9 (B) NMAC <input checked="" type="checkbox"/> if applicable Signature:  Printed name: JESSICA R. BONILLA Title: REGULATORY E-mail Address: JESSICA_BONILLA@XTOENERGY.COM Date: 08/21/2017 Phone: 432-620-6704		OIL CONSERVATION DIVISION Approved by:  Title: Geologist Approval Date: 9-1-17 Expiration Date: 9-1-19 Conditions of Approval Attached	
---	--	--	--

District I
1625 N. French Dr., Hobbs, NM 88240
Phone: (575) 393-6161 Fax: (575) 393-0720
District II
811 S. First St., Artesia, NM 88210
Phone: (575) 748-1283 Fax: (575) 748-9720
District III
1000 Rio Brazos Road, Aztec, NM 87410
Phone: (505) 334-6178 Fax: (505) 334-6170
District IV
1220 S. St. Francis Dr., Santa Fe, NM 87505
Phone: (505) 476-3460 Fax: (505) 476-3462

State of New Mexico
Energy, Minerals & Natural Resources Department
OIL CONSERVATION DIVISION
1220 South St. Francis Dr.
Santa Fe, NM 87505

Form C-102
August 1, 2011
Submit a copy to appropriate District Office
AUG 23 2017
RECEIVED
☐ AMENDED REPORT

WELL LOCATION AND ACREAGE DEDICATION PLAT

¹ API Number 30-015-44414	² Pool Code 0 98241	³ Pool Name WLC-2330519351 WOLF CAMP
⁴ Property Code 318423	⁵ Property Name REMUDA NORTH 31 STATE	
⁷ GRID NO. 005380	⁸ Operator Name XTO ENERGY, INC.	⁶ Well Number 123H
		⁹ Elevation 3210'

¹⁰ Surface Location

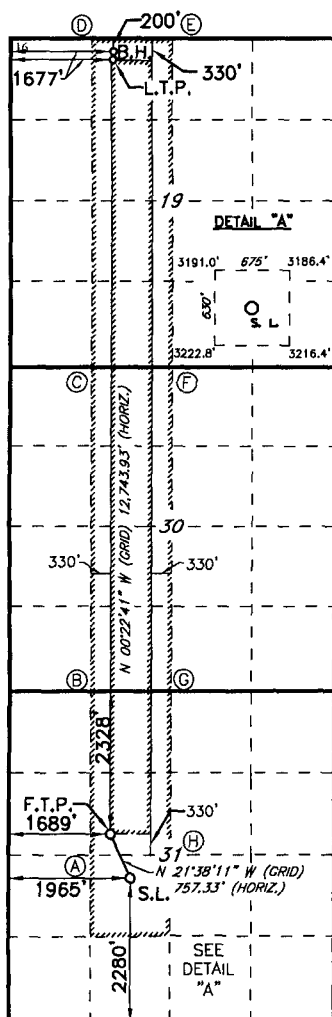
UL or lot no.	Section	Township	Range	Lot Idn	Feet from the	North/South line	Feet from the	East/West line	County
K	31	23S	30E		2280	SOUTH	1965	WEST	EDDY

¹¹ Bottom Hole Location If Different From Surface

UL or lot no.	Section	Township	Range	Lot Idn	Feet from the	North/South line	Feet from the	East/West line	County
D	19	23S	30E		200	NORTH	1677	WEST	EDDY

¹² Dedicated Acres 400	¹³ Joint or Infill	¹⁴ Consolidation Code	¹⁵ Order No.
---	-------------------------------	----------------------------------	-------------------------

No allowable will be assigned to this completion until all interest have been consolidated or a non-standard unit has been approved by the division.



GEODETTIC DATA
NAD 27 GRID - NM EAST
BOTTOM HOLE
N: 472029.7 - E: 626563.4
LAT: 32.2970617° N
LONG: 103.9237326° W
LAST TAKE POINT
N: 471899.7 - E: 626564.3
LAT: 32.2967044° N
LONG: 103.9237315° W

CORNER DATA
NAD 27 GRID - NM EAST
A: CALCULATED CORNER
N: 458958.7 - E: 626319.7
B: CALCULATED CORNER
N: 461615.5 - E: 626302.5
C: CALCULATED CORNER
N: 466922.8 - E: 626269.6
D: CALCULATED CORNER
N: 472229.0 - E: 626232.2
E: FOUND BRASS CAP "1916"
N: 472231.8 - E: 627570.3
F: FOUND BRASS CAP "1942"
N: 466926.0 - E: 627608.5
G: FOUND BRASS CAP "1942"
N: 461620.4 - E: 627639.1
H: CALCULATED CORNER
N: 458963.9 - E: 627657.8

GEODETTIC DATA
NAD 27 GRID - NM EAST
FIRST TAKE POINT
N: 459288.8 - E: 626647.5
LAT: 32.2620374° N
LONG: 103.9236180° W
SURFACE LOCATION
N: 458585.0 - E: 626926.7
LAT: 32.2600997° N
LONG: 103.9227235° W

GEODETTIC DATA
NAD 83 GRID - NM EAST
BOTTOM HOLE
N: 472089.3 - E: 667746.7
LAT: 32.2971840° N
LONG: 103.9242224° W
LAST TAKE POINT
N: 471959.3 - E: 667747.6
LAT: 32.2968266° N
LONG: 103.9242213° W

CORNER DATA
NAD 83 GRID - NM EAST
A: CALCULATED CORNER
N: 459018.0 - E: 667503.3
B: CALCULATED CORNER
N: 461674.8 - E: 667485.9
C: CALCULATED CORNER
N: 466982.2 - E: 667452.9
D: CALCULATED CORNER
N: 472288.5 - E: 667415.4
E: FOUND BRASS CAP "1916"
N: 472291.3 - E: 668753.5
F: FOUND BRASS CAP "1942"
N: 466985.5 - E: 668791.9
G: FOUND BRASS CAP "1942"
N: 461679.6 - E: 668822.5
H: CALCULATED CORNER
N: 459023.1 - E: 668841.3

GEODETTIC DATA
NAD 83 GRID - NM EAST
FIRST TAKE POINT
N: 459348.0 - E: 667831.1
LAT: 32.2621599° N
LONG: 103.9241067° W
SURFACE LOCATION
N: 458644.2 - E: 668110.3
LAT: 32.2602223° N
LONG: 103.9232122° W

¹⁷ OPERATOR CERTIFICATION

I hereby certify that the information contained herein is true and complete to the best of my knowledge and belief, and that this organization either owns a working interest or unleased mineral interest in the land including the proposed bottom hole location or has a right to drill this well at this location pursuant to a contract with an owner of such a mineral or working interest, or to a voluntary pooling agreement or a compulsory pooling

order heretofore entered by the division
Signature: Jessica Bonilla Date: 8/21/17
Printed Name: JESSICA R. BONILLA
E-mail Address: jessica_bonilla@xtoenergy.com

¹⁸ SURVEYOR CERTIFICATION

I hereby certify that the well location shown on this plat was plotted from field notes of actual surveys made by me or under my supervision, and that the same is true and correct to the best of my belief.

4-22-2017

Date of Survey

Signature and Seal of Professional Surveyor

19680

Certificate Number

