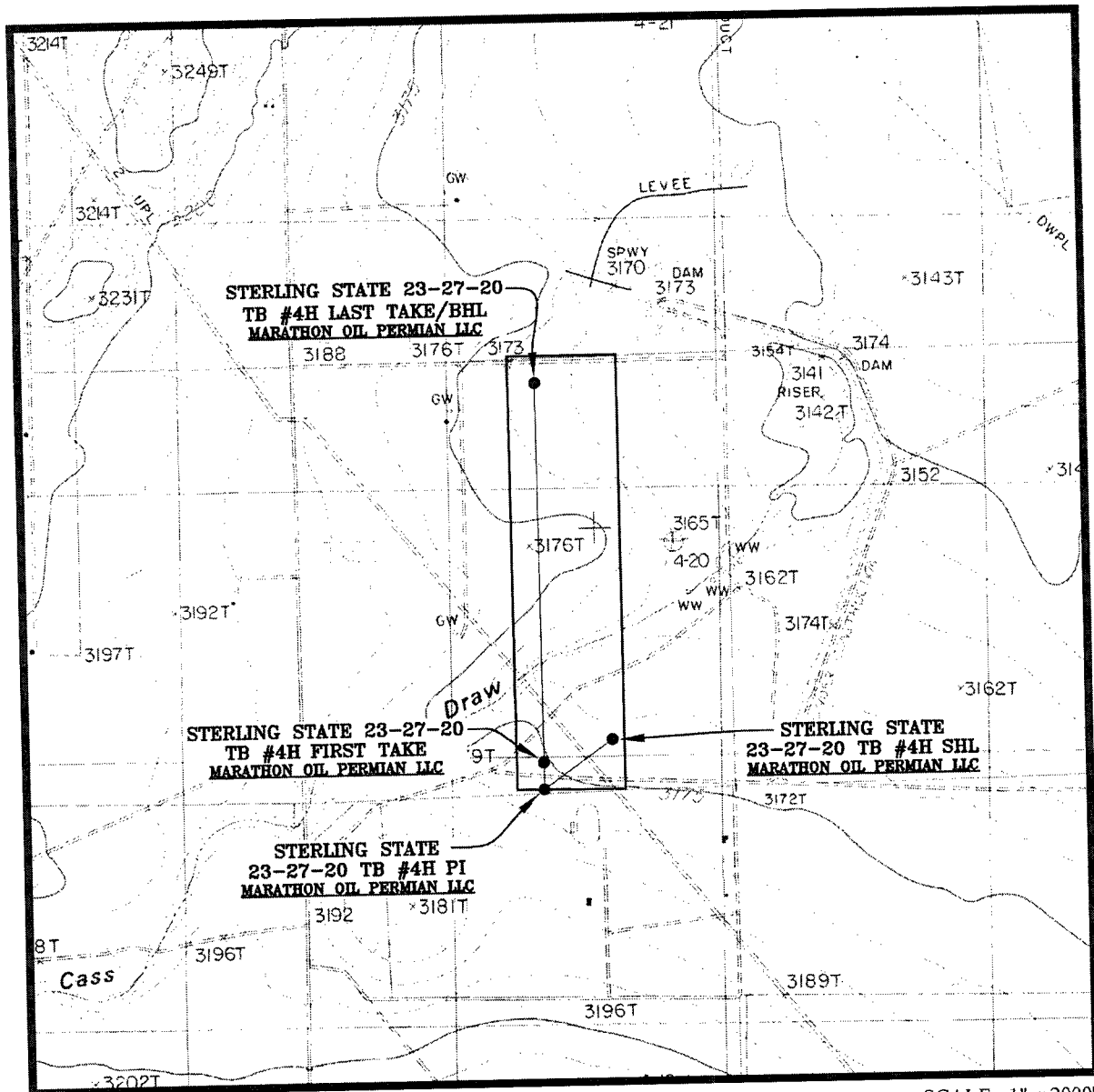


1-5-2018

LOCATION VERIFICATION MAP

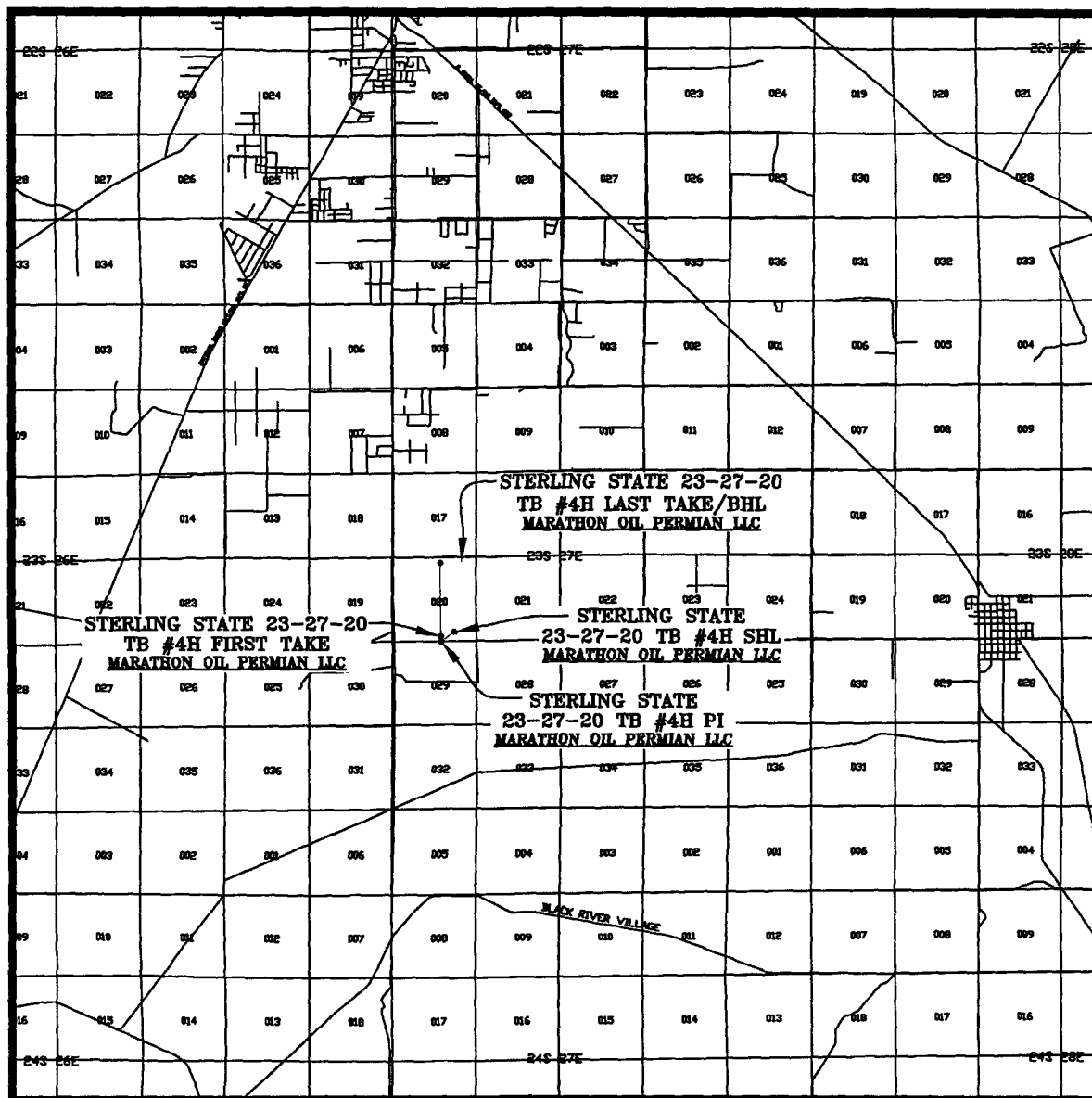


SEC. 20 TWP. 23-S RGE. 27-E
 SURVEY: N.M.P.M.
 COUNTY: EDDY
 DESCRIPTION: 603' FSL & 1462' FEL
 ELEVATION: 3181'
 OPERATOR: MARATHON OIL PERMIAN LLC
 LEASE: STERLING STATE 23-27-20
 U.S.G.S. TOPOGRAPHIC MAP: OTIS, N.M.

SCALE: 1" = 2000'
 CONTOUR INTERVAL = 5'

PREPARED BY:
 R-SQUARED GLOBAL, LLC
 1309 LOUISVILLE AVENUE, MONROE, LA 71201
 318-323-6900 OFFICE
 JOB No. R3771_005

VICINITY MAP



SEC. 20 TWP. 23-S RGE. 27-E
 SURVEY: N.M.P.M.
 COUNTY: EDDY
 DESCRIPTION: 603' FSL & 1462' FEL
 ELEVATION: 3181'
 OPERATOR: MARATHON OIL PERMIAN LLC
 LEASE: STERLING STATE 23-27-20
 U.S.G.S. TOPOGRAPHIC MAP: OTIS, N.M.

SCALE: 1" = 2 MILES

PREPARED BY:
 R-SQUARED GLOBAL, LLC
 1309 LOUISVILLE AVENUE, MONROE, LA 71201
 318-323-8900 OFFICE
 JOB No. R3771_005