

UNITED STATES
DEPARTMENT OF THE INTERIOR
BUREAU OF LAND MANAGEMENT

OCD-ARTESIA

OIL CONSERVATION
ARTESIA DISTRICT

FORM APPROVED
OMB NO. 1004-0137
Expires: January 31, 2018

SUNDRY NOTICES AND REPORTS ON WELLS
Do not use this form for proposals to drill or to re-enter an abandoned well. Use form 3160-3 (APD) for such proposals.

5. Lease Serial No.
NMNM042625

6. If Indian, Allottee or Tribe Name

7. If Unit or CA/Agreement, Name and/or No.

8. Well Name and No.
COTTON DRAW UNIT 153H

9. API Well No.
30-015-38535

10. Field and Pool or Exploratory Area
COTTON DRAW, DELAWARE SOUT

11. County or Parish, State
EDDY COUNTY, NM

SUBMIT IN TRIPLICATE - Other instructions on page 2

1. Type of Well

☒ Oil Well ☐ Gas Well ☐ Other

2. Name of Operator
DEVON ENERGY PRODUCTION COMPANY
Contact: RONNIE SLACK
ronnie.slack@dvn.com

3a. Address
333 WEST SHERIDAN AVENUE
OKLAHOMA CITY, OK 73102-5015

3b. Phone No. (include area code)
Ph: 405.552.4615

4. Location of Well (Footage, Sec., T., R., M., or Survey Description)

Sec 3 T25S R31E 210FNL 1980FEL
32.166175 N Lat, 103.763610 W Lon

12. CHECK THE APPROPRIATE BOX(ES) TO INDICATE NATURE OF NOTICE, REPORT, OR OTHER DATA

TYPE OF SUBMISSION	TYPE OF ACTION			
<input checked="" type="checkbox"/> Notice of Intent	<input type="checkbox"/> Acidize	<input type="checkbox"/> Deepen	<input type="checkbox"/> Production (Start/Resume)	<input type="checkbox"/> Water Shut-Off
<input type="checkbox"/> Subsequent Report	<input type="checkbox"/> Alter Casing	<input type="checkbox"/> Hydraulic Fracturing	<input type="checkbox"/> Reclamation	<input type="checkbox"/> Well Integrity
<input type="checkbox"/> Final Abandonment Notice	<input type="checkbox"/> Casing Repair	<input type="checkbox"/> New Construction	<input type="checkbox"/> Recomplete	<input type="checkbox"/> Other
	<input type="checkbox"/> Change Plans	<input checked="" type="checkbox"/> Plug and Abandon	<input type="checkbox"/> Temporarily Abandon	
	<input type="checkbox"/> Convert to Injection	<input type="checkbox"/> Plug Back	<input type="checkbox"/> Water Disposal	

13. Describe Proposed or Completed Operation: Clearly state all pertinent details, including estimated starting date of any proposed work and approximate duration thereof. If the proposal is to deepen directionally or recompleat horizontally, give subsurface locations and measured and true vertical depths of all pertinent markers and zones. Attach the Bond under which the work will be performed or provide the Bond No. on file with BLM/BIA. Required subsequent reports must be filed within 30 days following completion of the involved operations. If the operation results in a multiple completion or recompleat in a new interval, a Form 3160-4 must be filed once testing has been completed. Final Abandonment Notices must be filed only after all requirements, including reclamation, have been completed and the operator has determined that the site is ready for final inspection.

- See #19 of COA*
1. MIRU P&A unit.
 2. Tag existing CIBP @ 8,185'. Spot 30 sx (240') CI H @ 8,185' - 7,945'. Tag TOC.
 3. Circulate wellbore w/10# salt gel mud.
 4. Spot 30 sx (300') CI C @ 6,120' - 5,820'. Tag TOC. (DV tool @ 6002')
 5. Spot 30 sx (300') CI C @ 4,385' - 4,085'. Tag TOC. (T.Delaware @ 4383', Shoe @ 4297', B.Salt @ 4168')
 6. Perf @ 1,085'. Pump 135 sx (450') CI C in/out @ 1,085' - 635'. Tag TOC. (3000' spacer, Shoe @ 692', T.Salt @ 937')
 7. Perf @ 150'. Pump 45 sx CI C in/out to surface.
- Install dry hole marker.

**SUBJECT TO LHS
APPROVAL BY STATE**

KFC

WITNESS

APPROVED

**SEE ATTACHED FOR
CONDITIONS OF APPROVAL**

14. I hereby certify that the foregoing is true and correct.

Electronic Submission #394446 verified by the BLM Well Information System
For DEVON ENERGY PRODUCTION COMPANY, sent to the Carlsbad
Committed to AFMSS for processing by PRISCILLA PEREZ on 11/22/2017 ()

Name (Printed/Typed) RONNIE SLACK

Title PRODUCTION TECHNOLOGIST

Signature (Electronic Submission)

Date 11/08/2017

THIS SPACE FOR FEDERAL OR STATE OFFICE USE

Approved By *Paul R. Schwartz* 12/21/2017

Title TPET

Date

Conditions of approval, if any, are attached. Approval of this notice does not warrant or certify that the applicant holds legal or equitable title to those rights in the subject lease which would entitle the applicant to conduct operations thereon.

**BUREAU OF LAND MANAGEMENT
CARLSBAD FIELD OFFICE**

Office

Title 18 U.S.C. Section 1001 and Title 43 U.S.C. Section 1212, make it a crime for any person knowingly and willfully to make to any department or agency of the United States any false, fictitious or fraudulent statements or representations as to any matter within its jurisdiction.

(Instructions on page 2)

**** OPERATOR-SUBMITTED ** OPERATOR-SUBMITTED ** OPERATOR-SUBMITTED ****

DEVON ENERGY PRODUCTION COMPANY LP

Well Name: COTTON DRAW UNIT 153H	Field: PADUCA
Location: 200' FNL & 1980' FEL; SEC 3-T25S-R31E	County: EDDY State: NM
Elevation: 3464.4' KB; 3445.4' GL; 19' KB to GL	Spud Date: 8/20/11 Compl Date:
API#: 30-015-38535	Prepared by: Ronnie Slack Date: 11/7/17 Rev:

CURRENT WELLBORE

Rustler 555'
T.Salt--937'
B.Salt--4168'
T.Delaware--4383'

17.5" Hole
13-3/8", 48#, H40, STC, @ 692'
Cmt'd w/ 650 sx, circ cmt to surf

TOC @ 2,050' (CBL-10/6/11)

12-1/4" Hole
9-5/8", 40#, J55, LTC, @ 4,297'
Cmt'd w/1350 sx, circ cmt to surf

DV Tool @ 6000'-6002'
ECP @ 6002'-6027'

ETOC, 1st Stg @ 6447'

CIBP @ 8,185' (11/1/17)

MD	INCL	TVD
7500	1	7498
7723	13	7720
7818	23	7811
7945	34	7922
8073	44	8021
8200	55	8103
8296	65	8151
8392	75	8185
8505	88	8199
9206	91	8205
10065	89	8206
10543	89	8218
11020	90	8219
11590	90	8221
12064	89	8222
12159	89	8224
12314	89	8226

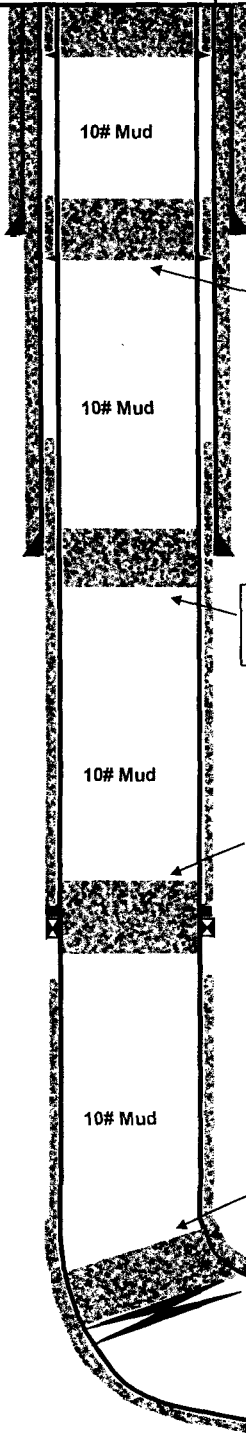
8-3/4" hole
5-1/2", 17#, N80, LTC & BTC @ 12,264'
1st Stg- 1290 SX
2nd Stg- 535 SX. TOC @ 2050'-CBL

12314' MD
8226 TVD

DELAWARE ZONE PERFS
8,413' - 11,871'

DEVON ENERGY PRODUCTION COMPANY LP

Well Name: COTTON DRAW UNIT 153H	Field: PADUCA
Location: 200' FNL & 1980' FEL; SEC 3-T25S-R31E	County: EDDY State: NM
Elevation: 3464.4' KB; 3445.4' GL; 19' KB to GL	Spud Date: 8/20/11 Compl Date:
API#: 30-015-38535	Prepared by: Ronnie Slack Date: 11/7/17 Rev:



Proposed:
 3. Cut wellhead off 3' BGL. Set dry hole marker.
 2. Pmp 45 sx CI C in/out to surface..
 1. Perf @ 150'.

17.5" Hole
13-3/8", 48#, H40, STC, @ 692'
 Cmt'd w/ 650 sx, circ cmt to surf

Proposed:
 2. Pmp 135 sx (450') CI C @ 1,085' - 635'. Tag.
 1. Perf @ 1,085.
 (3000' spacer, shoe, T.Salt)

TOC @ 2,050' (CBL-10/6/11)

12-1/4" Hole
9-5/8", 40#, J55, LTC, @ 4,297'
 Cmt'd w/1350 sx, circ cmt to surf

Proposed:
 1. Spot 30 sx (300') CI C @ 4,385' - 4,085'. Tag.
 (Delaware, shoe)

Proposed:
 1. Spot 30 sx (300') CI C @ 6,120' - 5,820'. Tag.

DV Tool @ 6000'-6002'
 ECP @ 6002'-6027'

ETOC, 1st Stg @ 6447'

Proposed:
 1. Tag CIBP @ 8,185'. Spot 30 sx (240') CI H @ 8,185' - 7,945'. Tag.

CIBP @ 8,185' (11/1/17)

PROPOSED PLUG & ABANDONMENT

Rustler 555'
 T.Salt--937'
 B.Salt--4168'
 T.Delaware--4383'

MD	INCL	TVD
7500	1	7498
7723	13	7720
7818	23	7811
7945	34	7922
8073	44	8021
8200	55	8103
8296	65	8151
8392	75	8185
8505	88	8199
9206	91	8205
10065	89	8206
10543	89	8218
11020	90	8219
11590	90	8221
12064	89	8222
12159	89	8224
12314	89	8226

8-3/4" hole
5-1/2", 17#, N80, LTC & BTC @ 12,264'
 1st Stg- 1290 SX
 2nd Stg- 535 SX. TOC @ 2050'-CBL

12314' MD
 8226 TVD

DELAWARE ZONE PERFS
 8,413' - 11,871'

Conditions of Approval

Devon Energy Production Co.

Cotton Draw Unit 153H, API 3001538535

T25S-R31E, Sec 03, 330FNL & 1980FEL

December 21, 2017

1. **Within 90 days of these conditions of approval for the processed Electronic Submission #394446 notice of intent begin wellbore operations or request an extension.**
2. **Operator is required to have the BLM approved NOI procedure with applicable conditions of approval on location during this workover operation.**
3. **Conditions of Approval reflect a procedure based on available documentation for this wellbore. The BLM workover witness and NOI approver may adjust operations so as not to hinder achievable abandonment requirements.**
4. Due to being within the Lesser Prairie Chicken habitat, this workover activity will be restricted to the hours of 9:00am through 3:00am for the period of March 1 through June 15.
5. Subject to like approval by the New Mexico Oil Conservation Division.
6. Notify 575-361-2822 Eddy Co as work begins. If there is no response leave a voice mail with the API#, workover purpose, and a call back phone number.
7. Surface disturbance beyond the existing pad must have prior approval.
8. A closed loop system is required. The operator shall properly dispose of drilling/circulating contents at an authorized disposal site. Tanks are required for all operations, no excavated pits.
9. Functional H₂S monitoring equipment shall be on location.
10. Blow Out Prevention Equipment 3000 (3M) to be used. All BOPE and workover procedures shall establish fail safe well control. Ram(s) for the work string(s) used is required equipment. Manual BOP closure system including a blind ram and pipe ram(s) designed to close on all (hand wheels or automatic locking devices) equipment installed regardless of BOP design. Function test the installed BOPE to 500psig when well conditions allow. Related equipment, (choke manifolds, kill trucks, gas vent or flare lines, etc.) employed when needed for reasonable well control requirements.
11. Created operation waste (i.e. trash, salts, chemicals, sewage, gray water, etc.) shall be safely contained and disposed of properly at a waste disposal facility. No waste material or fluid shall be disposed of on the well location or surrounding area. Porto-johns and trash containers will be on-location during any other crew-intensive operations.
12. The BLM PET is to run tbgt tally and agree to cement volumes and placement. Sample each plug for cement curing time and tag and/or pressure test as requested by BLM PET witness.
13. **Cementing procedure is subject to the next three numbered paragraphs.**
14. Mix cement plugs to cover a minimum of 100ft plus 10ft for every 1,000ft to the bottom of the plug, rounding the number of necessary sacks up to the nearest 5 sacks. Never use less than 25sx. Examples: A cement plug set at 8000 in 7" casing would require a min of 35sx. A 25sx plug in 5 ½" casing should cover 250ft, which may exceed 100ft plus 10ft per 1000ft.

15. Class H > 7500ft & C < 7500ft) neat cement plugs(s) will be necessary. For any plug that requires a tag or pressure test a minimum WOC time of 4 hours(C) & 8 hours(H) is recommended. Isolation plugs of Class "C" neat cement to be mixed 14.8#/gal, 1.32 ft³/sx, 6.3gal/sx water and Class "H" neat cement to be mixed 16.4#/gal, 1.06ft³/sx, 4.3gal/sx water.
16. Minimum requirement for mud placed between plugs is 25 sacks of saltwater gel per 100 barrels in 9 lb/gal brine.
17. **Set or tag a CIBP at 8185' and pressure test the casing to 500psig.**
18. **Set the 30sx balanced "H" cmt plug on the CIBP at 8185'MD = 8090'VD. WOC, and tag the plug with tbg at 7945' or above.**
19. **Plugging operations will be modified ensuring plugs cover the drilled wellbore I.D. Verify cmt behind pipe with a CBL from 6800' or below to 6300 or above taken at 0psig from the Brushy Canyon formation top of 6539'.**
 - a) **Good cmt bond: Set a balanced 25sx "C" cmt plug from 6640' or below. WOC, and tag the plug with tbg at 6420' or above.**
 - b) **Poor bond or no CBL taken: Perforate at 6600' (below the Brushy Canyon formation top of 6539') and sqz with 45sx Class "C". Displace the cmt to 6450' in the csg. WOC and tag the plug with tbg at 6460' or above.**
20. **Set a 25sx balanced "C" cmt plug from 6120' or below. WOC, and tag the plug with tbg at 5830' or above.**
21. **Operator's procedure steps 4. - 7. are spot on.**
22. **File subsequent sundry Form 3160-5 within 30 days of workover procedures. Include (dated daily) descriptions of the well work, i.e. procedure descriptions and setting depths of each plug in the subsequent sundry.**

Lesser Prairie Chicken Habitat Area Dry Hole Markers

Stamp or engrave (3/8" letters) information for the plugged well on 8"x 8" aluminum plate of 1/8", 12 gauge, or .080 sign material similar to this example:

**Ajax Operating Company
Tailspin – 22
1980FNL & 660FWL - Sec 16 - T22S-R31E
Lease LC029567 API 3001534567
Plugged July 17, 2017**

1. Center a 3 to 4 foot pipe at a right angles on a 8"x8"x 1/8" or 3/16" steel plate and weld the pipe to the plate.
2. Cement the pipe vertically inside the abandoned surface casing. Leave the steel plate about 2" above and horizontal to ground level.
3. Fix the well information plate to the steel plate with ¼ inch bolts and locking nuts or self-tapping fine threaded screws (one in each corner).
4. On the BLM Form 3160-5 subsequent report of abandonment state that a ground level dry hole marker installed as required by BLM and NMOCD Order No. R-12965.

Reclamation Objectives and Procedures

In Reply Refer To: 1310

Reclamation Objective: At final abandonment, well locations, production facilities, and access roads must undergo “final” reclamation so that the character and productivity of the land and water are restored.

The long-term objective of final reclamation is to set the course for eventual ecosystem restoration, including the restoration of the natural vegetation community, hydrology, and wildlife habitats. In most cases this means returning the land to a condition approximating or equal to that which existed prior to the disturbance. The final goal of reclamation is to restore the character of the land and water to its pre-disturbance condition. The operator is generally not responsible for achieving full ecological restoration of the site. Instead, the operator must achieve the short-term stability, visual, hydrological, and productivity objectives of the surface management agency and take steps necessary to ensure that long-term objectives will be reached through natural processes.

To achieve these objectives, remove any and all contaminants, scrap/trash, equipment, pipelines and powerlines. Strip and remove caliche, contour the location to blend with the surrounding landscape, re-distribute the native soils, provide erosion control as needed, rip and seed as needed. This will apply to well pads, facilities, and access roads. Barricade all access road(s) at the starting point. If reserve pits have not been adequately reclaimed due to salts or other contaminants, propose a plan for BLM approval to provide restoration of the pit area.

1. The Application for Permit to Drill or Reenter (APD, Form 3160-3), Surface Use Plan of Operations should have included adequate measures for stabilization and reclamation of disturbed lands. Oil and Gas operators must plan for reclamation, both interim and final, up front in the APD process as per Onshore Oil and Gas Order No. 1.
2. For locations and/or access roads not having an approved plan, or an inadequate plan for surface reclamation the operator must submit a proposal describing the procedures for reclamation. The appropriate time for submittal would be when filing the Notice of Intent, or with the Subsequent Sundry Report of Abandonment on Form 3160-5. The final reclamation goal is to be completed within 6 months of wellbore abandonment.
3. With an approved Surface Use Plan of Operation and/or an approved Sundry Notice, you are free to proceed with reclamation as per approved APD. If you have issues or concerns, contact a BLM specialist to assist you. It may be in your interest to have a BLM specialist look at the location and access road prior to the removal of reclamation equipment to ensure that it meets BLM objectives.
4. Upon reclamation conclusion submit a Form 3160-5, Subsequent Report of Reclamation. This will prompt a BLM specialist to inspect the location to verify work was completed as per approved plans.
5. The BLM approved Subsequent Report of Reclamation will be your notice that the native soils, contour and seedbed have been tentatively reestablished. If the objectives have not been met BLM will be notify the operator of the required corrective actions.
6. It is the responsibility of the operator to monitor these locations and/or access roads until such time the full BLM objective has been met. If after two growing seasons the location and/or access roads are not showing the potential for successful revegetation, additional

actions may be needed. When you feel the full BLM objectives have been met, submit a Final Abandonment Notice (FAN) Form 3160-5, stating that all reclamation requirements have been achieved and the location and/or access road is ready for a final abandonment inspection.

7. At this time a BLM specialist will again inspect the location and/or access road. If the native soils and contour have been restored, and the revegetation is successful, the FAN will be approved, releasing the operator of any further liability for the location and/or access road. If the location and/or access road have not achieved the objective, you will be notified as to additional work needed or additional time being needed to achieve the objective.

If there are any questions, please feel free to contact any of the following specialists:

Jim Amos
Supervisory Environmental Protection Specialist
575-234-5909, 575-361-2648 (Cell)

Robertson, Jeffery
Natural Resource Specialist
575-234-2230, 575-706-1920 (Cell)

Trishia Bad Bear
Natural Resource Specialist
575-393-3612, 575-390-2258 (Cell)

Vance Wolf
Natural Resource Specialist
575-234-5979

Jesse Bassett
Natural Resource Specialist
575-234-5913, 575-499-5114 (Cell)

Brooke Wilson
Natural Resource Specialist
575-234-6237

Paul Murphy
Natural Resource Specialist
757-234-5975, 575-885-9264 (Cell)

Arthur Arias
Environmental Protection Specialist
575-234-6230, 575-499-3378 (Cell)

Henryetta Price
Environmental Protection Specialist
575-234-5951, 575-706-2780 (Cell)

Shelly Tucker
Environmental Protection Specialist
575-234-5905, 575-361-0084 (Cell)

.s

Operator: Devon Energy Production Co., L.P.
Surface Lease: NM046525 BHL: NM046525
Case No: NM046525 Lease Agreement
Subsurface Concerns for Casing Designs: KFC
Well Status: OSI
Spud date: 8/20/2011
Plug'd Date:
Reentry Date:

Well: COTTON DRAW UNIT-153H
API: 3001538535
@ Srfce: T25S-R31E,03.200n1980e
@ M TD: T25s R31E,03.798s720w
Estate: F\I\F

KB: 3445
GL: 3445
Corr: 0

