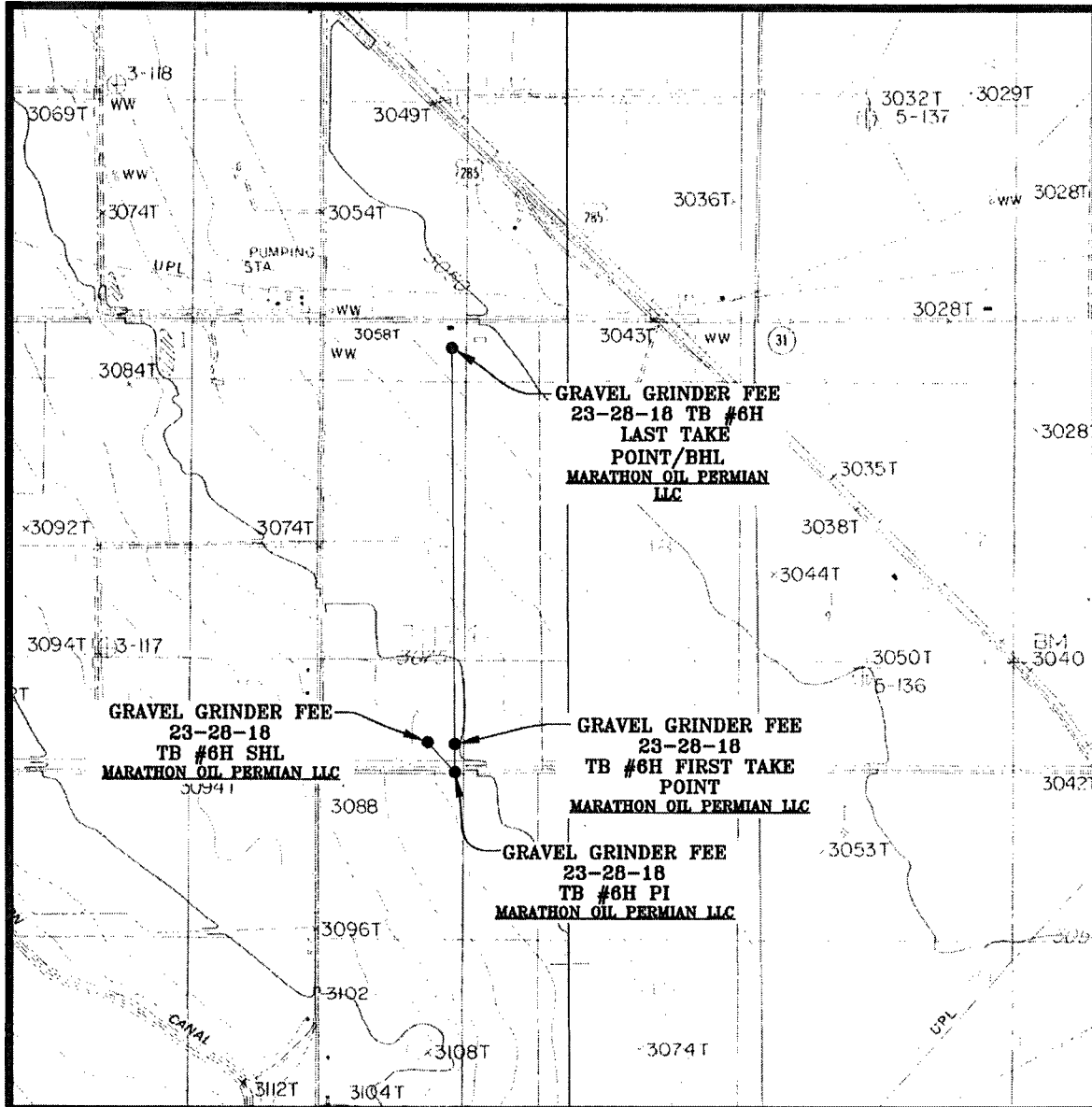


LOCATION VERIFICATION MAP

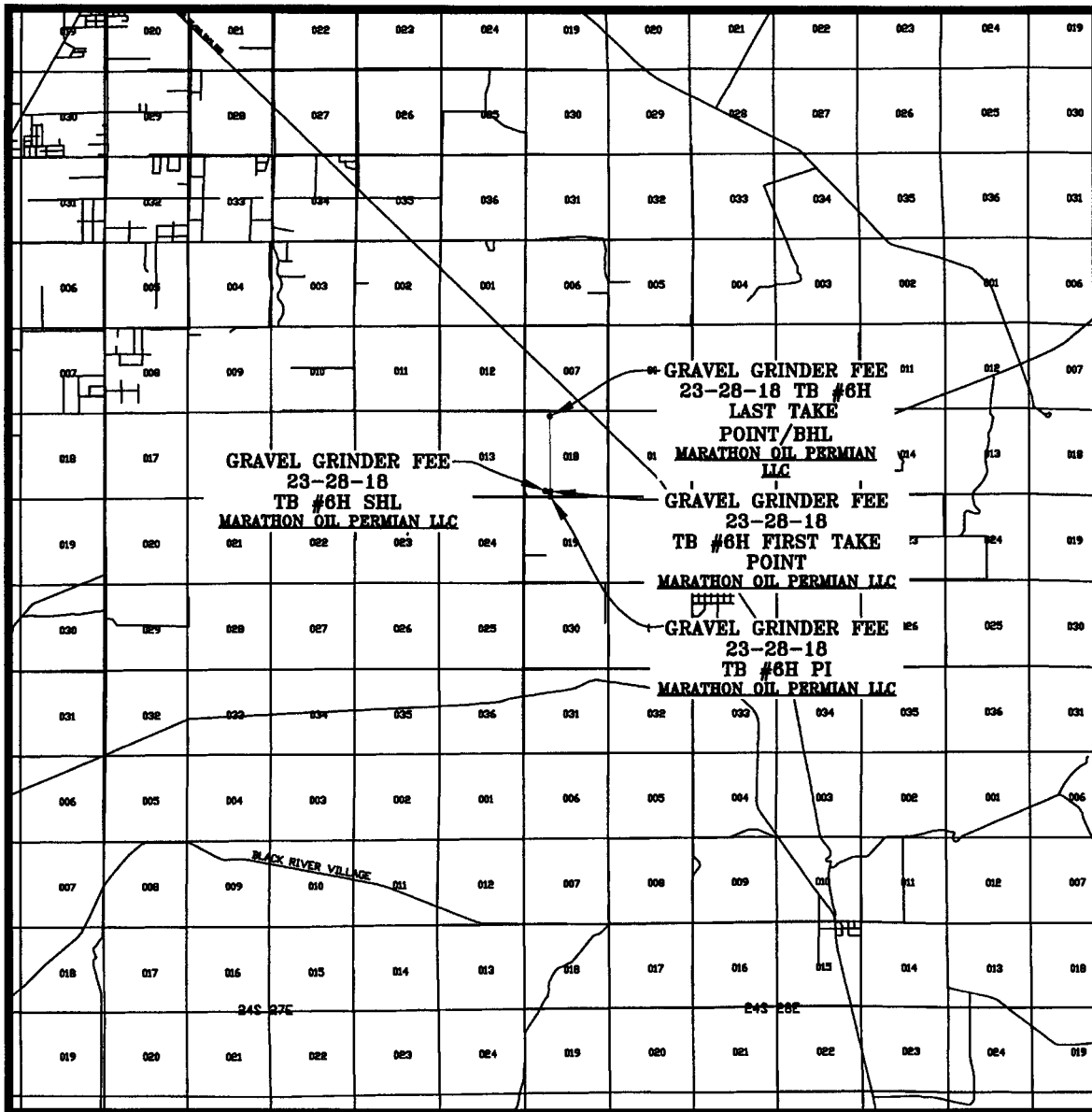


SEC. 18 TWP. 23-S RGE. 28-E
 SURVEY: N.M.P.M.
 COUNTY: EDDY
 DESCRIPTION: 353' FSL & 1325' FWL
 ELEVATION: 3080'
 OPERATOR: MARATHON OIL PERMIAN LLC
 LEASE: GRAVEL GRINDER FEE 23-28-18
 U.S.G.S. TOPOGRAPHIC MAP: OTIS, N.M.

SCALE: 1" = 2000'
 CONTOUR INTERVAL = 5'

PREPARED BY:
 R-SQUARED GLOBAL, LLC
 1309 LOUISVILLE AVENUE, MONROE, LA 71201
 318-323-6900 OFFICE
 JOB No. R3813_003

VICINITY MAP



SEC. 18 TWP. 23-S RGE. 28-E
 SURVEY: N.M.P.M.
 COUNTY: EDDY
 DESCRIPTION: 353' FSL & 1325' FWL
 ELEVATION: 3080'
 OPERATOR: MARATHON OIL PERMIAN LLC
 LEASE: GRAVEL GRINDER FEE 23-28-18
 U.S.G.S. TOPOGRAPHIC MAP: OTIS, N.M.

PREPARED BY:
 R-SQUARED GLOBAL, LLC
 1309 LOUISVILLE AVENUE, MONROE, LA 71201
 318-323-6900 OFFICE
 JOB No. R3813_003