

NM OIL CONSERVATION
ARTESIA DISTRICT

FEB 14 2016

Form C-102

State of New Mexico
Energy, Minerals & Natural Resources Department
OIL CONSERVATION DIVISION
1220 South St. Francis Dr.
Santa Fe, NM 87505

Revised August 1, 2011

Submit one copy to appropriate
District Office

RECEIVED

☐ AMENDED REPORT

District I
1625 N. French Dr., Hobbs, NM 88240
Phone: (505) 393-6151 Fax: (505) 393-0720
District II
811 S. First St., Artesia, NM 88210
Phone: (505) 748-1281 Fax: (505) 748-9720
District III
1000 Rio Bonito Road, Aztec, NM 87410
Phone: (505) 334-6178 Fax: (505) 334-6170
District IV
1220 S. St. Francis Dr., Santa Fe, NM 87505
Phone: (505) 476-3460 Fax: (505) 476-3462

WELL LOCATION AND ACREAGE DEDICATION PLAT

API Number 30-015 44683	Pool Code 96473	Pool Name Pierce Crossing Bare Spring, East
Property Code 320767	Property Name CORRAL FLY "35-26" FEDERAL COM	Well Number 25H
OGRID No. 16694	Operator Name OXY USA INC.	Elevation 3071.9'

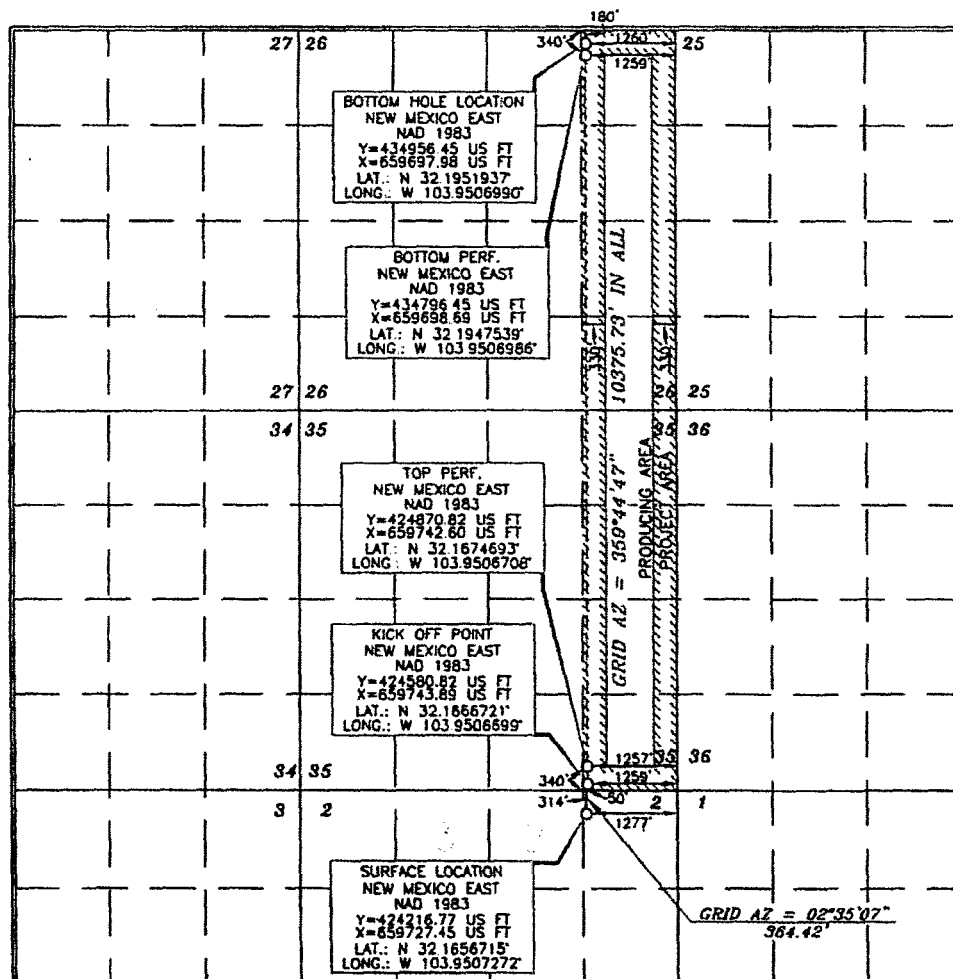
Surface Location

UL or lot no.	Section	Township	Range	Lot Idn	Feet from the	North/South line	Feet from the	East/West line	County
1	2	25 SOUTH	29 EAST, N.M.P.M.		314'	NORTH	1277'	EAST	EDDY

Bottom Hole Location If Different From Surface

UL or lot no.	Section	Township	Range	Lot Idn	Feet from the	North/South line	Feet from the	East/West line	County
A	26	24 SOUTH	29 EAST, N.M.P.M.		180'	NORTH	1260'	EAST	EDDY
Dedicated Acres 320	Joint or Infill Y	Consolidation Code	Order No. NSL will be filed						

No allowable will be assigned to this completion until all interests have been consolidated or a non-standard unit has been approved by the division.



OPERATOR CERTIFICATION

I hereby certify that the information contained herein is true and complete to the best of my knowledge and belief, and that this organization either owns a working interest or sole interest in the land including the proposed bottom hole location or has a right to drill this well at this location pursuant to a contract with an owner of such a mineral or working interest, or to a voluntary pooling agreement or a compulsory pooling order heretofore entered by the division.

Signature: **David Stewart** Date: **8/11/17**
Printed Name: **David Stewart SR. Reg. Adm.**
E-mail Address: **david_stewart@oxy.com**

SURVEYOR CERTIFICATION

I hereby certify that the well location shown on this plat was plotted from the best of actual surveys made by me or under my supervision, and that the same is true and correct to the best of my belief.

Date of Survey: **MAY 15, 2017**
Signature and Seal of Professional Surveyor: **Terry J. As...**
Certificate Number: **15079**

WD# 160526WL-b (Rev. C) (NA)

Rev. 2-16-18

APD ID: 10400006817

Submission Date: 10/17/2016

Highlighted data
reflects the most
recent changes

Operator Name: OXY USA INCORPORATED

Well Name: CORRAL FLY 35-26 FEDERAL COM

Well Number: 25H

[Show Final Text](#)

Well Type: OIL WELL

Well Work Type: Drill

Section 1 - Geologic Formations

Formation ID	Formation Name	Elevation	True Vertical Depth	Measured Depth	Lithologies	Mineral Resources	Producing Formation
1	RUSTLER	3072	398	398	SHALE, DOLOMITE, ANHYDRITE	USEABLE WATER	No
2	SALADO	2149	923	923	SHALE, DOLOMITE, HALITE, ANHYDRITE	OTHER : SALT	No
3	CASTILE	1574	1498	1498	ANHYDRITE	OTHER : salt	No
4	LAMAR	-166	3238	3238	LIMESTONE, SANDSTONE, SILTSTONE	NATURAL GAS, OIL, OTHER : BRINE	No
5	BELL CANYON	-195	3267	3267	SANDSTONE, SILTSTONE	NATURAL GAS, OIL, OTHER : BRINE	No
6	CHERRY CANYON	-1072	4144	4144	SANDSTONE, SILTSTONE	NATURAL GAS, OIL, OTHER : BRINE	No
7	BRUSHY CANYON	-2432	5504	5504	LIMESTONE, SANDSTONE, SILTSTONE	NATURAL GAS, OIL, OTHER : BRINE	No
8	BONE SPRING	-3920	6992	7004	LIMESTONE, SANDSTONE, SILTSTONE	NATURAL GAS, OIL	Yes
9	BONE SPRING 1ST	-4794	7866	7892	LIMESTONE, SANDSTONE, SILTSTONE	NATURAL GAS, OIL	Yes
10	BONE SPRING 2ND	-5136	8208	8237	LIMESTONE, SANDSTONE, SILTSTONE	NATURAL GAS, OIL	Yes

Section 2 - Blowout Prevention

Pressure Rating (PSI): 5M

Rating Depth: 9032

Equipment: 13-5/8" 5M Annular, Blind Ram, Double Ram

Requesting Variance? YES

Variance request: Request for the use of a flexible choke line from the BOP to Choke Manifold.

Testing Procedure: BOP/BOPE will be tested by an independent service company to 250 psi low and the high pressure indicated above per Onshore Order 2 requirements. The System may be upgraded to a higher pressure but still tested to the working pressure listed in the table above. If the system is upgraded all the components installed will be functional and tested. Pipe rams will be operationally checked each 24 hour period. Blind rams will be operationally checked on each trip out of the hole. These checks will be noted on the daily tour sheets. Other accessories to the BOP equipment will include a Kelly cock and floor safety valve (inside BOP) and choke lines and choke manifold. A multibowl or a unionized multibowl wellhead system will be employed. The wellhead and connection to the BOPE will meet all API 6A requirements. The BOP will be tested per Onshore Order #2 after installation on the surface casing which will cover testing requirements for a maximum of