

ARTESIA DISTRICT

Form C-102

**RECEIVED** Submit one copy to appropriate District Office

**District Office**

State of New Mexico  
Energy, Minerals & Natural Resources Department  
OIL CONSERVATION DIVISION  
1220 South St. Francis Dr.  
Santa Fe, NM 87505

<sup>1</sup> API Number <b>30-015-44680</b>	<sup>2</sup> Pool Code <b>98220</b>	<sup>3</sup> Pool Name <b>Purple Sage; Wolfcamp (Gas)</b>
<sup>4</sup> Property Code <b>38521</b>	<sup>5</sup> Property Name <b>MYOX 21 STATE COM</b>	<sup>6</sup> Well Number <b>51H</b>
<sup>7</sup> OGRID No. <b>229137</b>	<sup>8</sup> Operator Name <b>COG OPERATING, LLC</b>	<sup>9</sup> Elevation <b>2989.2</b>

" Bottom Hole Location If Different From Surface									
UL or lot no.	Section	Township	Range	Lot Ida	Feet from the	North/South line	Feet from the	East/West line	County
D	16	25 S	28 E		200	NORTH	330	WEST	EDDY

No allowable will be assigned to this completion until all interests have been consolidated or a non-standard unit has been approved by the division.



*[Signature]* 2/13/18  
Signature Date

Printed Name \_\_\_\_\_

E-mail Address \_\_\_\_\_

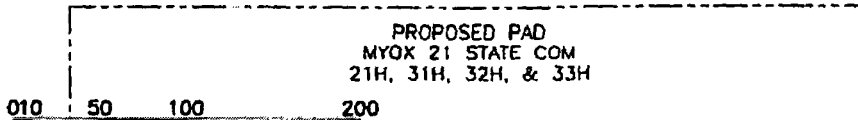
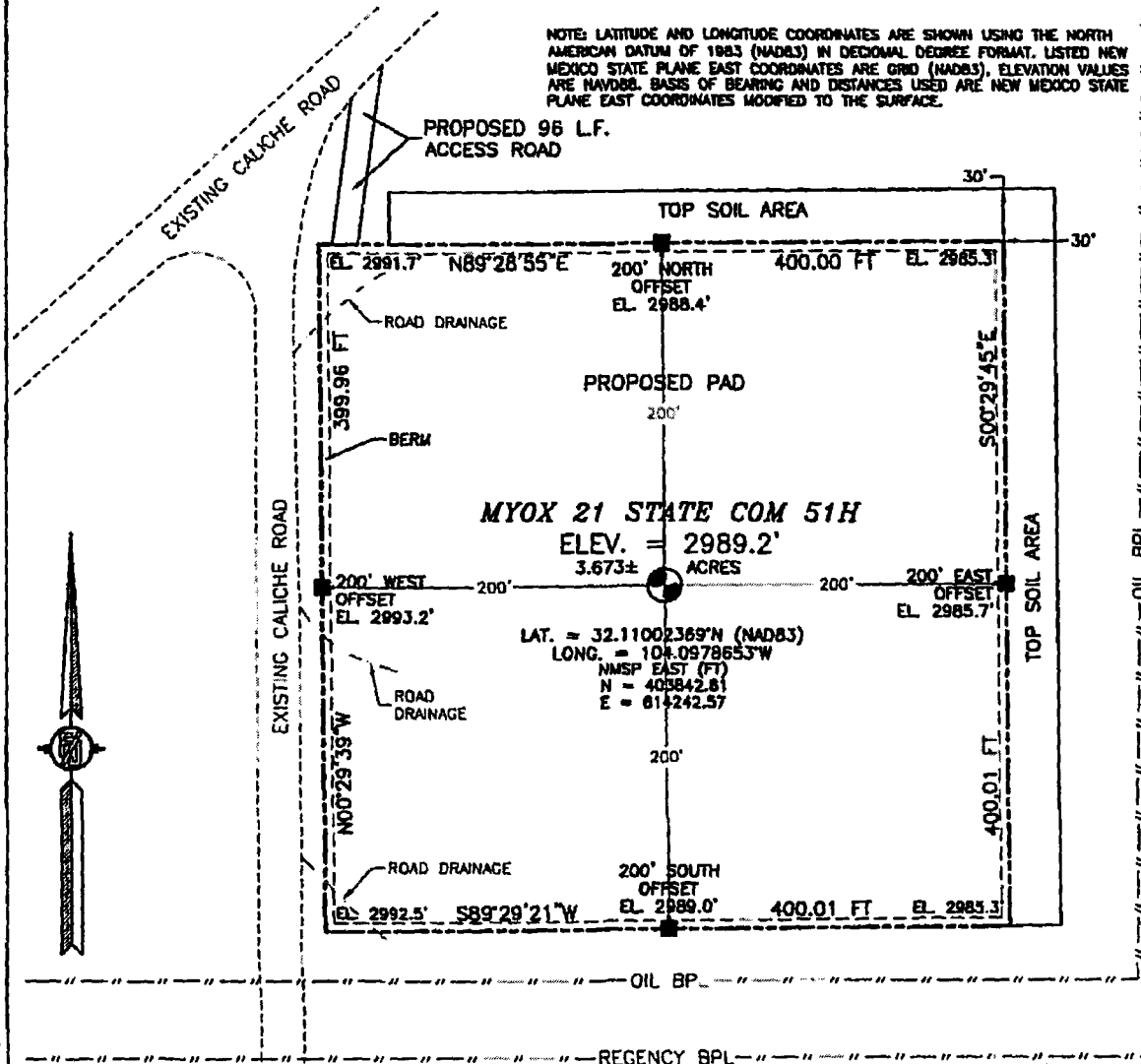
I hereby certify that the well location shown on this plat was plotted from field notes of actual surveys made by me or under my supervision, and that the same is true and correct to the best of my belief.

Date of Survey \_\_\_\_\_

**SURVEY NO. 5987**

# SITE MAP

NOTE: LATITUDE AND LONGITUDE COORDINATES ARE SHOWN USING THE NORTH AMERICAN DATUM OF 1983 (NAD83) IN DECIMAL DEGREE FORMAT. LISTED NEW MEXICO STATE PLANE EAST COORDINATES ARE GRID (NAD83). ELEVATION VALUES ARE NAVD83. BASIS OF BEARING AND DISTANCES USED ARE NEW MEXICO STATE PLANE EAST COORDINATES MODIFIED TO THE SURFACE.



DIRECTIONS TO LOCATION  
FROM MILE MARKER 8 (EIGHT) ON U.S. HWY 285 GO NORTH 0.1 MILE TO CALICHE ROAD ON LEFT, GO WEST ON CALICHE LEASE ROAD 0.8 MILE TO ROAD INTERSECTION, TURN RIGHT GO NORTHWEST ON CALICHE ROAD APPROX. 0.75 MILE TO INTERSECTION, TURN LEFT ON CALICHE LEASE ROAD GO SOUTHWEST 0.1 MILE, PROPOSED ACCESS IS JUST EAST OF EXISTING CALICHE LEASE ROAD SOUTH, SITE IS 96 FEET SOUTH TO NORTHWEST CORNER OF PAD.

I, FILMON F. JARAMILLO, A NEW MEXICO REGISTERED PROFESSIONAL SURVEYOR CERTIFY THAT I DIRECTED AND AM RESPONSIBLE FOR THIS SURVEY, THAT THIS SURVEY IS TRUE AND CORRECT TO THE BEST OF MY KNOWLEDGE AND BELIEF AND THIS SURVEY AND PLAT MEET THE MINIMUM STANDARDS FOR SURVEYING IN NEW MEXICO.

*[Signature]*  
FILMON F. JARAMILLO, P.E.S. 12767 DATE

MADRON SURVEYING, INC. 301 SOUTH CANAL (575) 234-3341 CARLSBAD, NEW MEXICO

NM OIL CONSERVATION

ARTESIA DISTRICT

FEB 14 2018

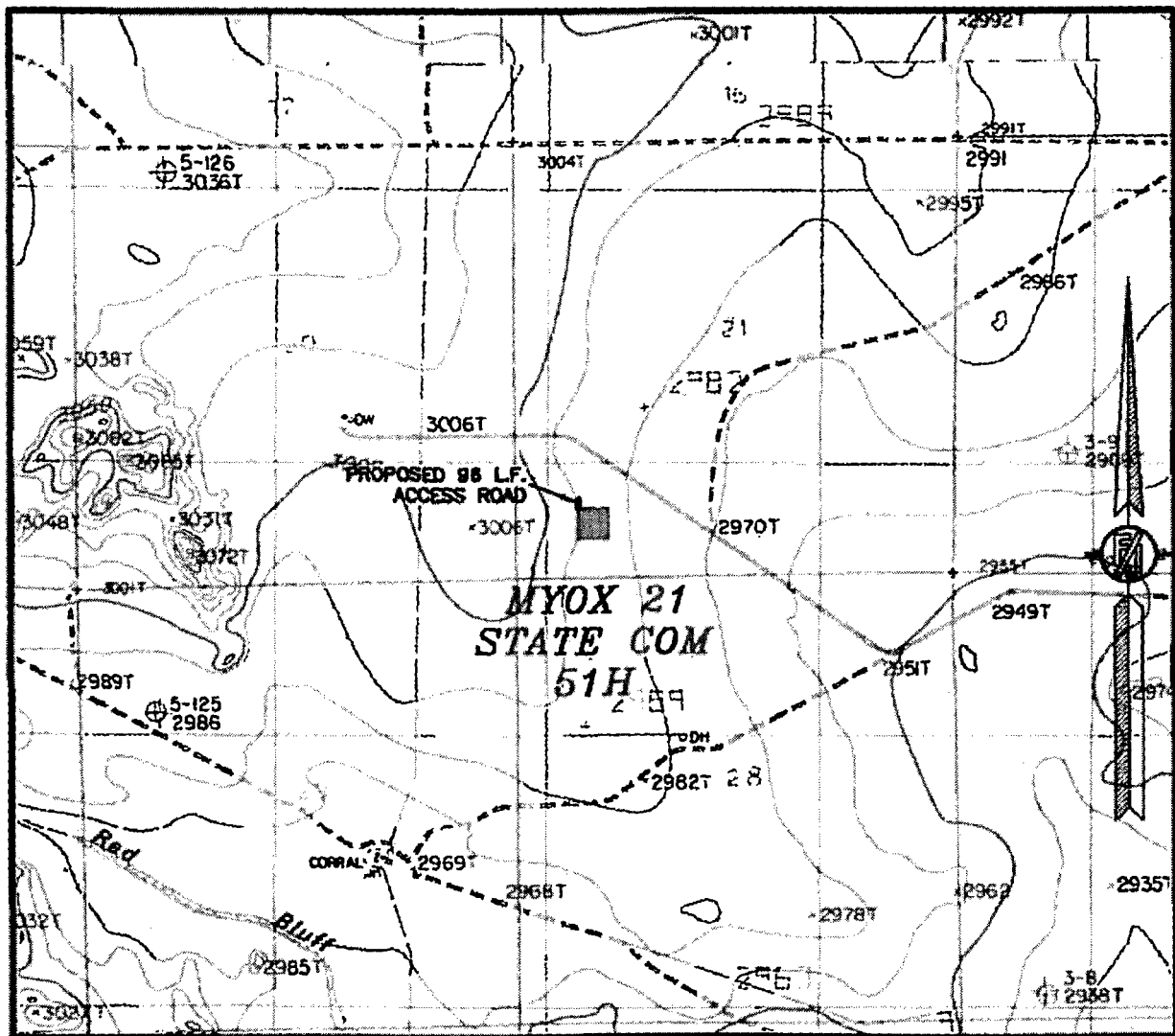
RECEIVED

COC OPERATING, LLC  
MYOX 21 STATE COM 51H  
LOCATED 688 FT. FROM THE SOUTH LINE  
AND 900 FT. FROM THE WEST LINE OF  
SECTION 21, TOWNSHIP 25 SOUTH,  
RANGE 28 EAST, N.M.P.M.  
EDDY COUNTY, STATE OF NEW MEXICO

JANUARY 30, 2018

SURVEY NO. 5987

SECTION 21, TOWNSHIP 25 SOUTH, RANGE 28 EAST, N.M.P.M.  
EDDY COUNTY, STATE OF NEW MEXICO  
LOCATION VERIFICATION MAP



USGS QUAD MAP:  
RED BLUFF

NOT TO SCALE

COG OPERATING, LLC  
MYOX 21 STATE COM 51H  
LOCATED 688 FT. FROM THE SOUTH LINE  
AND 900 FT. FROM THE WEST LINE OF  
SECTION 21, TOWNSHIP 25 SOUTH,  
RANGE 28 EAST, N.M.P.M.  
EDDY COUNTY, STATE OF NEW MEXICO

NM OIL CONSERVATION  
ARTESIA DISTRICT

FEB 14 2018

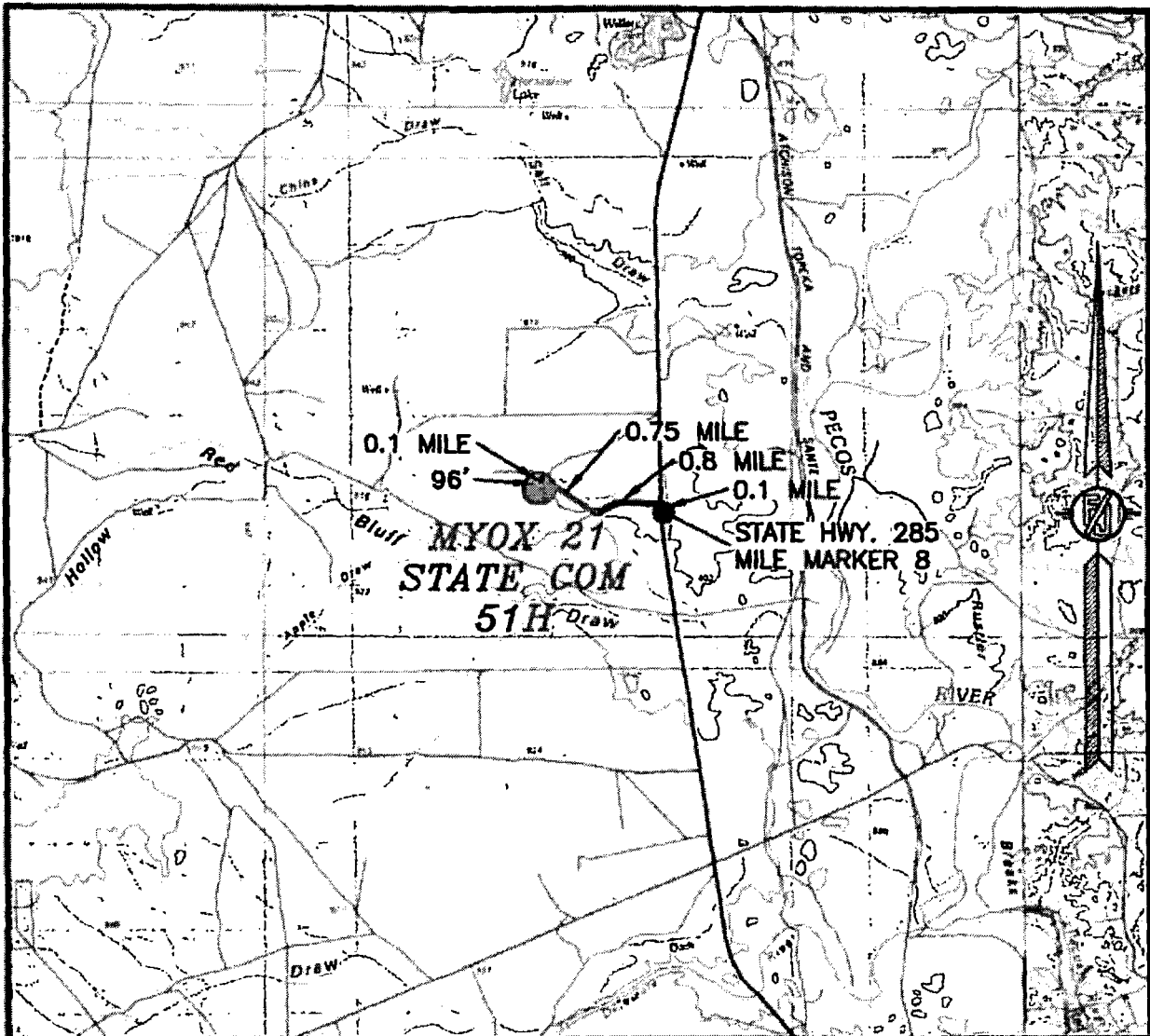
RECEIVED

JANUARY 30, 2018

SURVEY NO. 5987

MADRON SURVEYING, INC. 301 SOUTH CANAL CARLSBAD, NEW MEXICO  
(575) 234-3311

SECTION 21, TOWNSHIP 25 SOUTH, RANGE 28 EAST, N.M.P.M.  
EDDY COUNTY, STATE OF NEW MEXICO  
VICINITY MAP



DISTANCES IN MILES

NOT TO SCALE

**DIRECTIONS TO LOCATION**

FROM MILE MARKER 8 (EIGHT) ON U.S. HWY. 285 GO NORTH 0.1 MILE TO CALICHE ROAD ON LEFT, GO WEST ON CALICHE LEASE ROAD 0.8 MILE TO ROAD INTERSECTION, TURN RIGHT GO NORTHWEST ON CALICHE ROAD APPROX 0.75 MILE TO INTERSECTION, TURN LEFT ON CALICHE LEASE ROAD GO SOUTHWEST 0.1 MILE, PROPOSED ACCESS IS JUST EAST OF EXISTING CALICHE LEASE ROAD SOUTH, SITE S 96 FEET SOUTH TO NORTHWEST CORNER OF PAD.

**COG OPERATING, LLC**  
**MYOX 21 STATE COM 51H**  
LOCATED 688 FT. FROM THE SOUTH LINE  
AND 900 FT. FROM THE WEST LINE OF  
SECTION 21, TOWNSHIP 25 SOUTH,  
RANGE 28 EAST, N.M.P.M.  
EDDY COUNTY, STATE OF NEW MEXICO

JANUARY 30, 2018

**MADRON SURVEYING, INC.** 301 SOUTH CANAL (575) 234-3341 **CARLSBAD, NEW MEXICO** SURVEY NO. 5987

NM OIL CONSERVATION

ARTESIA DISTRICT

FEB 14 2018

RECEIVED

SECTION 21, TOWNSHIP 25 SOUTH, RANGE 28 EAST, N.M.P.M.  
EDDY COUNTY, STATE OF NEW MEXICO  
AERIAL PHOTO



NOT TO SCALE  
AERIAL PHOTO:  
GOOGLE EARTH  
MAR. 2016

COC OPERATING, LLC  
MYOX 21 STATE COM 51H  
LOCATED 688 FT. FROM THE SOUTH LINE  
AND 900 FT. FROM THE WEST LINE OF  
SECTION 21, TOWNSHIP 25 SOUTH,  
RANGE 28 EAST, N.M.P.M.  
EDDY COUNTY, STATE OF NEW MEXICO

JANUARY 30, 2018

SURVEY NO. 5987

MADRON SURVEYING, INC. 301 SOUTH CANAL (575) 234-3311 CARLSBAD, NEW MEXICO

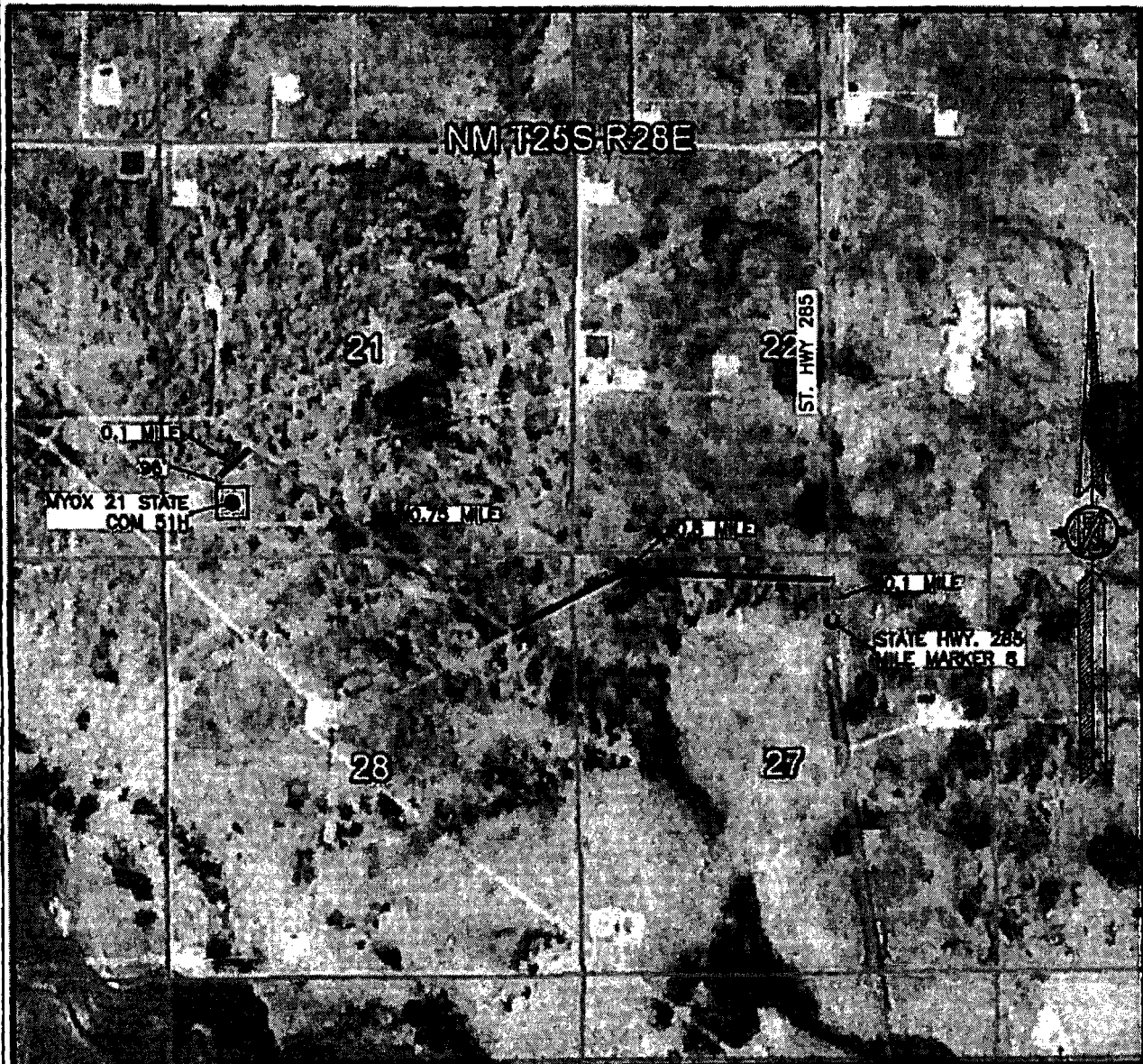
NM OIL CONSERVATION  
ARTESIA DISTRICT

FEB. 14 2018

RECEIVED



SECTION 21, TOWNSHIP 25 SOUTH, RANGE 28 EAST, N.M.P.M.  
 EDDY COUNTY, STATE OF NEW MEXICO  
 AERIAL ACCESS ROUTE MAP



NOT TO SCALE  
 AERIAL PHOTO:  
 GOOGLE EARTH  
 MAR. 2016

**COG OPERATING, LLC**  
**MYOX 21 STATE COM 51H**  
 LOCATED 688 FT. FROM THE SOUTH LINE  
 AND 900 FT. FROM THE WEST LINE OF  
 SECTION 21, TOWNSHIP 25 SOUTH,  
 RANGE 28 EAST, N.M.P.M.  
 EDDY COUNTY, STATE OF NEW MEXICO

JANUARY 30, 2018

SURVEY NO. 5987

MADRON SURVEYING, INC. 301 SOUTH CANAL (575) 234-3341 CARLSBAD, NEW MEXICO

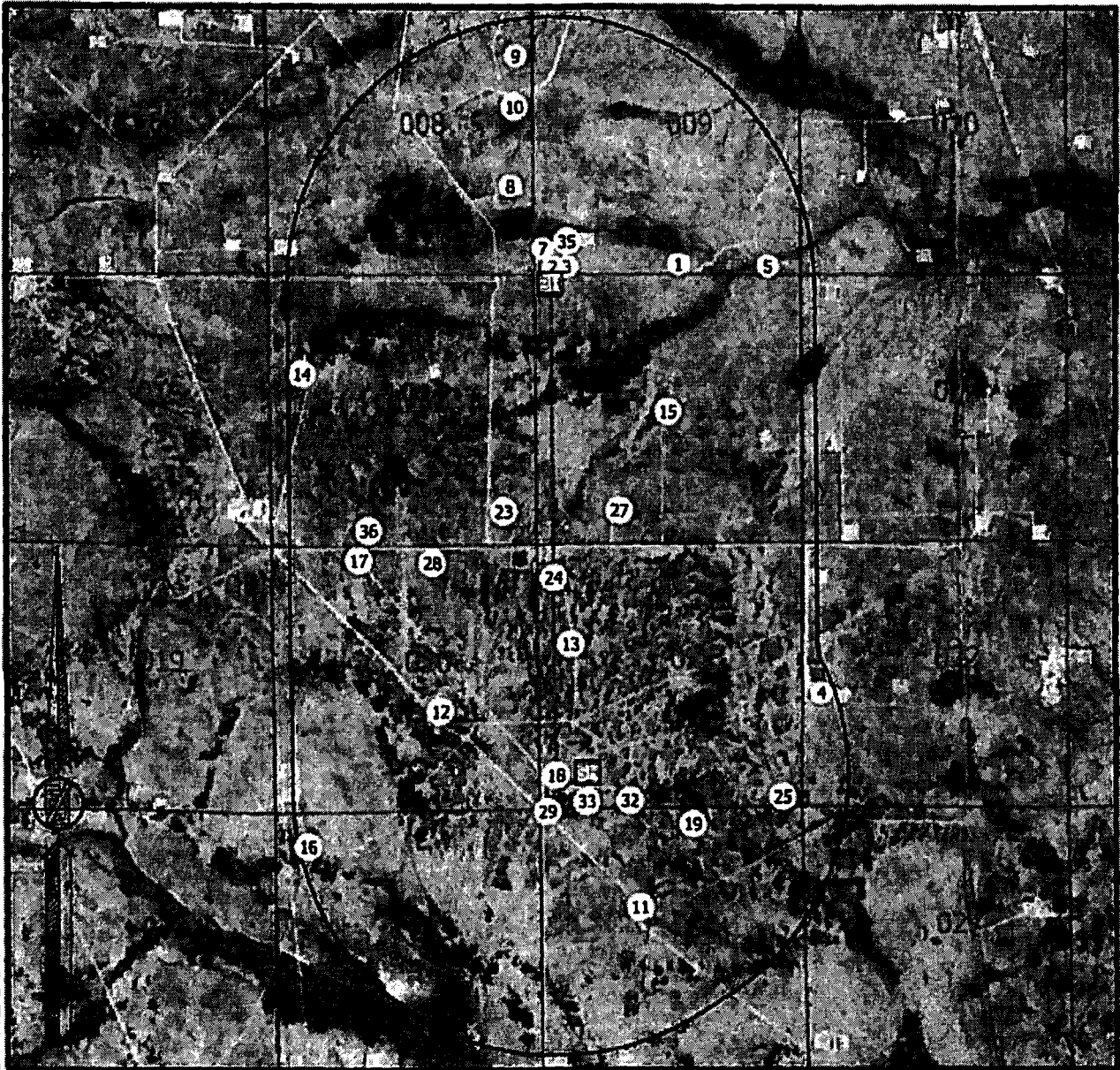
NM OIL CONSERVATION

ARTESIA DISTRICT

FEB 14 2018

RECEIVED

# 1-MILE MAP



- SF SURFACE LOCATION
- BH BOTTOM OF HOLE
- X WELLS WITHIN 1 MILE

**COG OPERATING, LLC**  
**MYOX 21 STATE COM 61H**  
 LOCATED 688 FT. FROM THE SOUTH LINE  
 AND 900 FT. FROM THE WEST LINE OF  
 SECTION 21, TOWNSHIP 25 SOUTH,  
 RANGE 28 EAST, N.M.P.M.  
 EDDY COUNTY, STATE OF NEW MEXICO

JANUARY 30, 2018

**MADRON SURVEYING, INC.** 301 SOUTH CANAL (575) 234-3341 **CARLSBAD, NEW MEXICO**

SURVEY NO. 5987

NM OIL CONSERVATION

ARTESIA DISTRICT

FEB 14 2018

RECEIVED