

<p>T-22-S</p> <p>T-23-S</p> <p>CORNER COORDINATES</p> <p>NAD 83, SPCS NM EAST</p> <p>A - Y: 487840.96' / X: 568227.81'</p> <p>B - Y: 487843.47' / X: 570881.56'</p> <p>C - Y: 482531.56' / X: 570883.00'</p> <p>D - Y: 482533.94' / X: 568203.23'</p> <p>CORNER COORDINATES</p> <p>NAD 27, SPCS NM EAST</p> <p>A - Y: 487781.95' / X: 527046.14'</p> <p>B - Y: 487784.43' / X: 529699.85'</p> <p>C - Y: 482492.66' / X: 529701.19'</p> <p>D - Y: 482475.08' / X: 527021.46'</p> <p>LAST TAKE POINT/ BOTTOM HOLE LOCATION</p> <p>330' FNL 2325' FEL, SECTION 1</p> <p>NAD 83, SPCS NM EAST</p> <p>X566536.29' / Y487511.27'</p> <p>LAT32.34020911N / LONG104.24520044W - 330'</p> <p>NAD 27, SPCS NM EAST</p> <p>X527374.61' / Y487452.27'</p> <p>LAT32.3400936N / LONG104.2446979W</p> <p>FIRST TAKE POINT</p> <p>330' FSL 2348' FEL, SECTION 1</p> <p>NAD 83, SPCS NM EAST</p> <p>X568534.77' / Y482866.13'</p> <p>LAT32.32744034N / LONG104.24328248W</p> <p>NAD 27, SPCS NM EAST</p> <p>X527353.00' / Y482807.25'</p> <p>LAT32.32732213N / LONG104.2447803W</p> <p>SURFACE HOLE LOCATION</p> <p>463' FSL 1527' FEL, SECTION 1</p> <p>NAD 83, SPCS NM EAST</p> <p>X569356.19' / Y483004.66'</p> <p>LAT32.32781926N / LONG104.24262277W</p> <p>NAD 27, SPCS NM EAST</p> <p>X528174.41' / Y482945.77'</p> <p>LAT32.32770102N / LONG104.2421207W</p>	<div style="text-align: center;"> <h3>SECTION 36</h3> </div>	<p>SECTION 31</p> <p>SECTION 6</p>
<p>SECTION 1</p> <p>SECTION 12</p>	<p>PI</p> <p>330'</p> <p>463'</p>	<p>SECTION 6</p> <p>SECTION 7</p>

17 OPERATOR CERTIFICATION

I hereby certify that the information contained herein is true and complete to the best of my knowledge and belief, and that this organization either owns a working interest or unleased mineral interest in the land including the proposed bottom hole location or has a right to drill this well at this location pursuant to a contract with an owner of such a mineral or working interest or to a voluntary pooling agreement or a compulsory pooling order heretofore entered by the division.

[Signature]

Signature

2/9/2018

Date

Melissa Szudera

Printed Name

mszudera@marathonoil.com

E-mail Address

18 SURVEYOR CERTIFICATION

I hereby certify that the well location shown on this plat was plotted from field notes of actual surveys made by me or under my supervision, and that the same is true and correct to the best of my belief.

FEBRUARY 2, 2018

Date of Survey

Signature and Seal of Professional Surveyor

Certificate Number

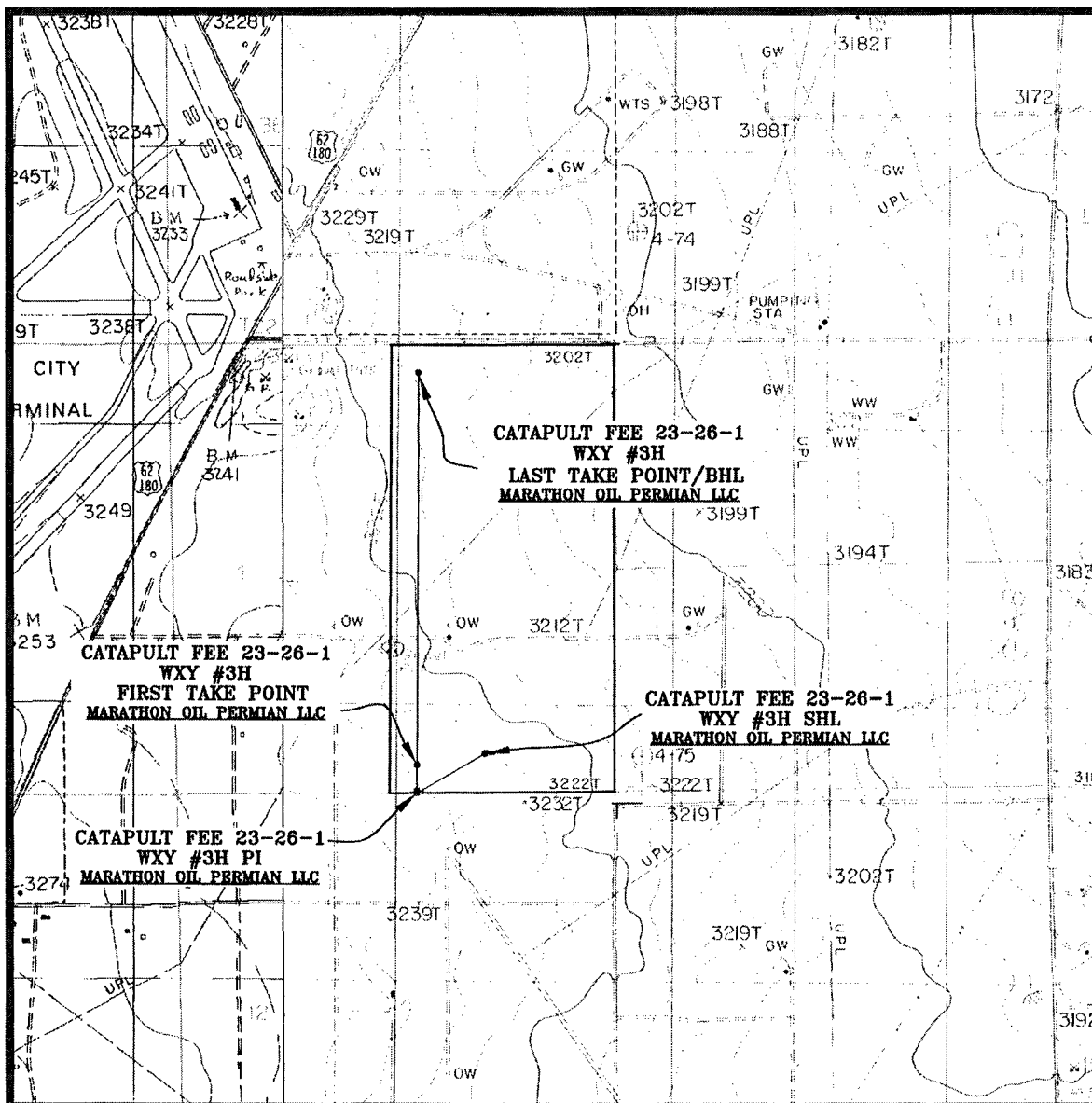
LLOYD P. SHORT 21653

LOCATION VERIFICATION MAP

NM OIL CONSERVATION
ARTESIA DISTRICT

FEB 15 2018

RECEIVED



SEC. 1 TWP. 23-S RGE. 26-E
SURVEY: N.M.P.M.
COUNTY: EDDY
DESCRIPTION: 463' FSL & 1527' FEL
ELEVATION: 3219'
OPERATOR: MARATHON OIL PERMIAN LLC
LEASE: CATAPULT FEE 23-26-1
U.S.G.S. TOPOGRAPHIC MAP: OTIS, N.M.

SCALE: 1" = 2000'
CONTOUR INTERVAL = 5'

PREPARED BY:
R-SQUARED GLOBAL, LLC
1309 LOUISVILLE AVENUE, MONROE, LA 71201
318-323-6900 OFFICE
JOB No. R3798_002

FEB 15 2018

RECEIVED



SCALE: 1" = 2 MILE

PREPARED BY:
R-SQUARED GLOBAL, LLC
1309 LOUISVILLE AVENUE, MONROE, LA 71201
318-323-8900 OFFICE
JOB No. R3798_002