

DISTRICT I
1625 N. French Dr., Hobbs, NM 88240
Phone (575) 334-6161 Fax (575) 334-6170

DISTRICT II
811 S. First St., Artesia, NM 88210
Phone (505) 748-1283 Fax (505) 748-9720

DISTRICT III
1000 Rio Brazos Road, Aztec, NM 87410
Phone (505) 334-6178 Fax (505) 334-6170

DISTRICT IV
1220 S. St. Francis Dr., Santa Fe, NM 87505
Phone (505) 476-3460 Fax (505) 476-3462

State of New Mexico
Energy, Minerals & Natural Resources Department
OIL CONSERVATION DIVISION
1220 South St. Francis Dr.
Santa Fe, New Mexico 87505

Form C-102
Revised August 1, 2011
Submit one copy to appropriate
District Office

□ AMENDED REPORT

WELL LOCATION AND ACREAGE DEDICATION PLAT

| | | |
|-----------------------------------|--|--|
| API Number 30-015-44281 | Pool Code 96217 | Pool Name Willow Lake; Bone Spring |
| Property Code 317085 | Property Name CATTLE BARON Federal | Well Number 2H |
| OGRID No. 005380 | Operator Name XTO ENERGY | Elevation 2905' |

Surface Location

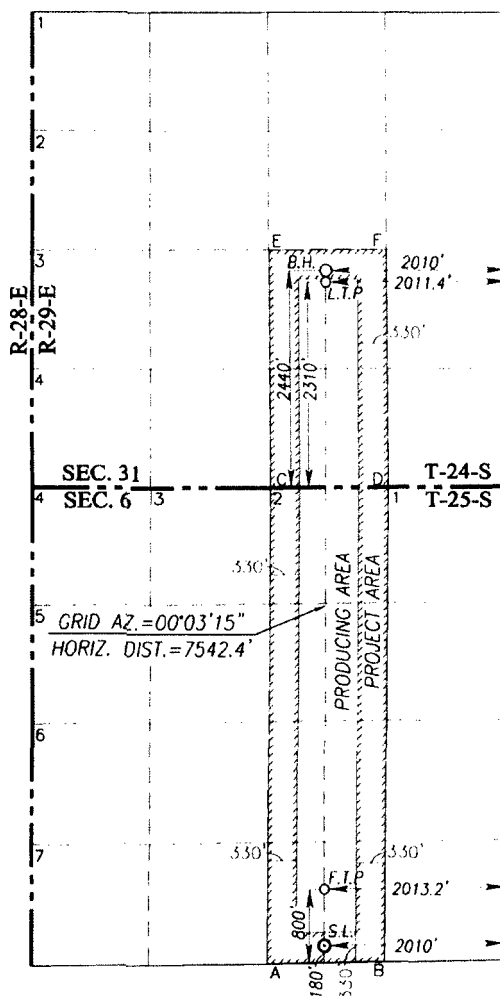
| UL or lot No. | Section | Township | Range | Lot Idn | Feet from the | North/South line | Feet from the | East/West line | County |
|---------------|----------|-------------|-------------|---------|---------------|------------------|---------------|----------------|-------------|
| O | 6 | 25-S | 29-E | | 180 | SOUTH | 2010 | EAST | EDDY |

Bottom Hole Location If Different From Surface

| UL or lot No. | Section | Township | Range | Lot Idn | Feet from the | North/South line | Feet from the | East/West line | County |
|---------------|-----------|-------------|-------------|---------|---------------|------------------|---------------|----------------|-------------|
| J | 31 | 24-S | 29-E | | 2440 | SOUTH | 2010 | EAST | EDDY |

| Dedicated Acres | Joint or Infill | Consolidation Code | Order No. |
|-----------------|-----------------|--------------------|-----------|
| 340 | 289.62 | | |

NO ALLOWABLE WILL BE ASSIGNED TO THIS COMPLETION UNTIL ALL INTERESTS HAVE BEEN CONSOLIDATED OR A NON-STANDARD UNIT HAS BEEN APPROVED BY THE DIVISION



| SCALE: 1"=2000' | |
|--|--|
| GEODETIC COORDINATES NAD 83 NME | GEODETIC COORDINATES NAD 27 NME |
| BOTTOM HOLE LOCATION Y= 426881.6 N X= 637787.6 E LAT.=32.173191° N LONG.=104.021605° W | BOTTOM HOLE LOCATION Y= 426823.1 N X= 596603.4 E LAT.=32.173068° N LONG.=104.021117° W |
| LAST TAKE POINT NAD 83 NME Y= 426751.6 N X= 637787.4 E LAT.=32.172834° N LONG.=104.021607° W | LAST TAKE POINT NAD 27 NME Y= 426693.1 N X= 596603.3 E LAT.=32.172711° N LONG.=104.021118° W |
| CORNER COORDINATES TABLE NAD 27 NME | |
| A - Y= 419090.8 N, X= 595949.4 E | B - Y= 419114.6 N, X= 597277.1 E |
| C - Y= 424379.3 N, X= 595978.8 E | D - Y= 424388.4 N, X= 597307.8 E |
| E - Y= 427051.4 N, X= 595960.0 E | F - Y= 427057.5 N, X= 597288.3 E |
| CORNER COORDINATES TABLE NAD 83 NME | |
| A - Y= 419149.1 N, X= 637133.7 E | B - Y= 419172.9 N, X= 638461.4 E |
| C - Y= 424437.8 N, X= 637163.0 E | D - Y= 424446.9 N, X= 638492.0 E |
| E - Y= 427109.9 N, X= 637144.2 E | F - Y= 427116.0 N, X= 638472.5 E |
| FIRST TAKE POINT NAD 83 NME Y= 419960.7 N X= 637781.0 E LAT.=32.154167° N LONG.=104.021691° W | FIRST TAKE POINT NAD 27 NME Y= 419902.3 N X= 596596.7 E LAT.=32.154043° N LONG.=104.021203° W |
| SURFACE LOCATION NAD 83 NME Y=419340.8 N X=637780.4 E LAT.=32.152463° N LONG.=104.021699° W | SURFACE LOCATION NAD 27 NME Y=419282.4 N X=596596.1 E LAT.=32.152339° N LONG.=104.021211° W |

OPERATOR CERTIFICATION

I hereby certify that the information herein is true and complete to the best of my knowledge and belief, and that this organization either owns a working interest or unleased mineral interest in the land including the proposed bottom hole location or has a right to drill this well at this location pursuant to a contract with an owner of such mineral or working interest, or to a voluntary pooling agreement or a compulsory pooling order heretofore entered by the division.

Stephanie Rabadue 7/1/2017
Signature Date

Stephanie Rabadue

Printed Name

stephanie_rabadue@xtoenergy.com
E-mail Address

SURVEYOR CERTIFICATION

I hereby certify that the well location shown on this plat was plotted from field notes of surveys made by me or under my supervision, and that the same is true and correct to the best of my belief.

Date of Survey
Signature & Seal of Professional Surveyor

Ronald J. Eidson 06/09/2017
Certificate Number Gary G. Eidson 12641
Ronald J. Eidson 3239
ACK REL W.O.:17130472 JWSC W.O.: 1711.0573

RW49-18



U.S. Department of the Interior
BUREAU OF LAND MANAGEMENT

Drilling Plan Data Report

03/22/2018

APD ID: 10400024190

Submission Date: 11/01/2017

Highlighted data
reflects the most
recent changes

Operator Name: XTO ENERGY INCORPORATED

Well Name: CATTLE BARON FEDERAL

Well Number: 2H

[Show Final Text](#)

Well Type: OIL WELL

Well Work Type: Drill

Section 1 - Geologic Formations

| Formation ID | Formation Name | Elevation | True Vertical Depth | Measured Depth | Lithologies | Mineral Resources | Producing Formation |
|--------------|-----------------|-----------|---------------------|----------------|---------------------------------|---|---------------------|
| 1 | --- | 2905 | 0 | 0 | ALLUVIUM, OTHER : Quaternary | NONE | No |
| 2 | RUSTLER | 2630 | 275 | 275 | SANDSTONE | USEABLE WATER | No |
| 3 | TOP SALT | 2281 | 624 | 624 | SALT | NONE | No |
| 4 | BASE OF SALT | 374 | 2531 | 2531 | SALT | NONE | No |
| 5 | DELAWARE | 175 | 2730 | 2730 | SANDSTONE | NATURAL GAS, OIL, OTHER : Produced Water | No |
| 6 | CHERRY CANYON | -732 | 3637 | 3637 | SANDSTONE | NATURAL GAS, OIL, OTHER : Produced Water | No |
| 7 | BRUSHY CANYON | -2301 | 5206 | 5206 | SANDSTONE | NATURAL GAS, OIL, OTHER : Produced Water | No |
| 8 | BONE SPRING 1ST | -3278 | 6183 | 6183 | SANDSTONE | NATURAL GAS, POTASH, OTHER : Produced Water | No |
| 9 | BONE SPRING 2ND | -5314 | 8219 | 8219 | SANDSTONE | NATURAL GAS, OIL, OTHER : Produced Water | No |
| 10 | BONE SPRING 3RD | -5568 | 8473 | 8473 | SANDSTONE | NATURAL GAS, OIL, OTHER : Produced Water | Yes |

Section 2 - Blowout Prevention

Pressure Rating (PSI): 3M

Rating Depth: 8473

Equipment: The blow out preventer equipment (BOP) for this well consists of a 13-5/8" minimum 3M Hydril and a 13-5/8" minimum 3M Double Ram BOP.

Requesting Variance? YES

Variance request: A variance is requested to allow use of a flex hose as the choke line from the BOP to the Choke Manifold. If this hose is used, a copy of the manufacturer's certification and pressure test chart will be kept on the rig. Attached is an example of a certification and pressure test chart. The manufacturer does not require anchors.

Testing Procedure: All BOP testing will be done by an independent service company. Annular pressure tests will be limited to 50% of the working pressure. When nipping up on the 13-5/8" 3M bradenhead and flange, the BOP test will be limited to 3000psi. When nipping up on the 9-5/8", the BOP will be tested to a minimum of 3000 psi. All BOP tests will include a low pressure test as per BLM regulations. The 3M BOP diagram is attached. Blind rams will be function tested each trip, pipe rams will be function tested each day.