

UNITED STATES
DEPARTMENT OF THE INTERIOR
BUREAU OF LAND MANAGEMENT
OCD Artesia
NEW MEXICO
ARTESIA DISTRICTFORM APPROVED
OMB NO 1004-0137
Expires January 31, 2018**SUNDRY NOTICES AND REPORTS ON WELLS**
*Do not use this form for proposals to drill or to re-enter an abandoned well Use form 3160-3 (APD) for such proposals*5 Lease Serial No
NMNM27276

6 If Indian, Allottee or Tribe Name

7 If Unit or CA/Agreement, Name and/or No

8 Well Name and No
MCCLAY 129 API Well No
30-015-23125-00-S110 Field and Pool or Exploratory Area
N BENSON11 County or Parish, State
EDDY COUNTY, NM**SUBMIT IN TRIPLICATE - Other instructions on page 2**

1 Type of Well

☒ Oil Well ☐ Gas Well ☐ Other

2 Name of Operator

LINN OPERATING INCORPORATED E-Mail DGORDON@LINNENERGY.COM

Contact DEBI GORDON

3a Address

600 TRAVIS STREET SUITE 5100
HOUSTON, TX 77002

3b Phone No (include area code)

Ph 281-840-4010
Fx 832-209-4340

4 Location of Well (Footage Sec T R M or Survey Description)

Sec 33 T18S R30E NWSW 1980FSL 660FWL

12 CHECK THE APPROPRIATE BOX(ES) TO INDICATE NATURE OF NOTICE, REPORT, OR OTHER DATA

TYPE OF SUBMISSION

TYPE OF ACTION

☒ Notice of Intent☐ Subsequent Report☐ Final Abandonment Notice☐ Acidize☐ Alter Casing☐ Casing Repair☐ Change Plans☐ Convert to Injection☐ Deepen☐ Hydraulic Fracturing☐ New Construction☒ Plug and Abandon☐ Plug Back☐ Production (Start/Resume)☐ Reclamation☐ Recomplete☐ Temporarily Abandon☐ Water Disposal☐ Water Shut-Off☐ Well Integrity☐ Other

13 Describe Proposed or Completed Operation Clearly state all pertinent details, including estimated starting date of any proposed work and approximate duration thereof. If the proposal is to deepen directionally or recompleat horizontally, give subsurface locations and measured and true vertical depths of all pertinent markers and zones. Attach the Bond under which the work will be performed or provide the Bond No on file with BLM/BIA. Required subsequent reports must be filed within 30 days following completion of the involved operations. If the operation results in a multiple completion or recompleat in a new interval, a Form 3160 4 must be filed once testing has been completed. Final Abandonment Notices must be filed only after all requirements, including reclamation, have been completed and the operator has determined that the site is ready for final inspection.

LINN OPERATING, LLC IS RESPECTFULLY SUBMITTING A PROPOSED PLUG AND ABANDONMENT PROCEDURE FOR THE MCCLAY FEDERAL #12 WELL IN EDDY COUNTY, NM

PLEASE SEE THE ATTACHED PROPOSED PROCEDURE AND WELLBORE SCHEMATICS

THIS WELL CURRENTLY HAS A NOTICE OF WRITTEN ORDER ISSUED TO RETURN THE WELL TO PRODUCTION IN PAYING QUANTITIES OR SUBMIT A NOTICE OF INTENT TO PLUG & ABANDON

SC 4-4-18
Accepted for record - NMOC

RECLAMATION PROCEDURE
ATTACHED

SEE ATTACHED FOR
CONDITIONS OF APPROVAL

14 I hereby certify that the foregoing is true and correct

Electronic Submission #409377 verified by the BLM Well Information System

For LINN OPERATING INCORPORATED, sent to the Carlsbad

Committed to AFMSS for processing by JAMES AMOS on 03/27/2018 (18JA0210SE)

Name (Printed/Typed) DEBI GORDON

Title REGULATORY MANAGER

Signature (Electronic Submission)

Date 03/26/2018

THIS SPACE FOR FEDERAL OR STATE OFFICE USE

Approved By

Title

Date

Conditions of approval, if any, are attached. Approval of this notice does not warrant or certify that the applicant holds legal or equitable title to those rights in the subject lease which would entitle the applicant to conduct operations thereon.

Office

Title 18 U.S.C. Section 1001 and Title 43 U.S.C. Section 1212, make it a crime for any person knowingly and willfully to make to any department or agency of the United States any false, fictitious or fraudulent statements or representations as to any matter within its jurisdiction.

(Instructions on page 2)

** BLM REVISED ** BLM REVISED ** BLM REVISED ** BLM REVISED ** BLM REVISED **

McClay Federal #12
Eddy County, NM
North Benson Queen Field
API: 30-015-23125

Proposed P&A Procedure

- 1 ~~Place 6 sacks of cement on CIBP at 3169'~~
- 2 Set CIBP at 2800' and place 4 sacks of cement on CIBP *Dump bail 35' cement or spot 25 sx.*
- 3 Pressure test the casing to 500 psi
- 4 Circulate mud laden fluid to surface
- 5 Spot a ~~15~~ sack cement plug from ~~1500' to 1700'~~ *25 sx @ 1520-1320, WOC Tag*
- 6 Spot a ~~15~~ sack cement plug from ~~390' to 590'~~ *25 sx @ 721-595, WOC Tag*
- 7 ~~Spot a 15 sack cement plug from 390' to 590'~~
- 8 Spot a ~~15~~ sack cement plug from 0' to 200' *15 sx (OK)*
- 9 Cut well head off and weld on a dry hole marker

The top of the Yates formation is 1700 ft

Cement calculations are based on 5 1/2" 14# Casing with a displacement of 0.137 cuft/ft and Class "C" cement mixed at 1.32 cuft/sack

21 sx * 1.32 cuft/sx = 27.72 cuft of cement

27.72 cuft / 0.137 cuft/ft = 202 ft inside the casing

6 sx * 1.32 cuft/sx = 7.92 cuft of cement

7.92 cuft / 0.137 cuft/ft = 57.8 ft inside the casing

LAST UPDATED	3/22/2018 HDS
COUNTY & STATE	Eddy County NM
API NO	30-015-23125

K B ELEV	<u>3430'</u>
GROUND LEVEL	3423'

CURRENT COMPLETION

T/Saif	645
B/Saif	1470
7R	2140
Qu	2740
GB	3224
SA	3390
Current	

SURFACE CASING

SIZE	<u>8-5/8"</u>	WEIGHT	<u>24 0#</u>	DEPTH	<u>671'</u>
HOLE	<u>11 25"</u>	SX CMT	<u>400 sx</u>	TOC @	<u>Surface</u>
					<u>Circulated</u>

WELL HISTORY

Spud Date	3/17/1980
TD Date	3/26/1980
Completion Date	5/2/1980

7 7/8 hole
5 1/2" ^{cs} 14" @ 3400'

5/2/1980 2770' - 2820' - 20 Holes ✓

6/10/1992 2892' - 2898' - 14 Holes ✓

	Tubing Detail (top to bot		
Joints	Description	Footage	Depth
	KB	7	7
93	2-7/8" J-55 EUE Tbg	2930	2937
1	SN	1	2938
1	2 7/8" EUE Perf Pup Joint	4	2942
1	2-7/8" J-55 EUE Tbg	31	2973
1	Bull Plug	1	2974
	No Records		
	Could not verify Tbg		
	Average Joint Length	31 5	

[illegible]

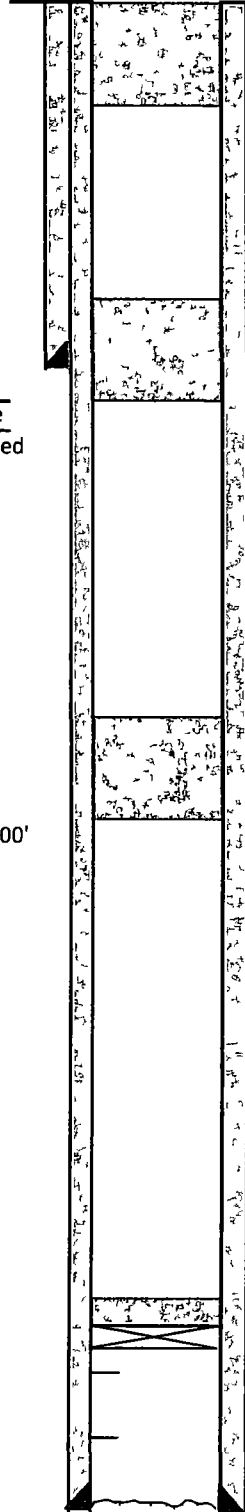
LEASE & WELL NO **McClay Federal #12**
 LOCATION **1980' FSL, 660' FWL of Sec 33, T-18-S, R-30-E**
 FIELD **North Benson Queen Field**

LAST UPDATED **3/26/2018 HDS**
 COUNTY & STATE **Eddy County NM**
 API NO **30-015-23125**

K B ELEV **3430'**

GROUND LEVEL **3423'**

P&A COMPLETION



Spot 21 sx plug at 200'
200' cement plug at 0' to 200'

Spot 21 sx plug at 550'
200' cement plug at 550' to 750'

Spot 21 sx plug at 1700'
200' cement plug at 1500' to 1700'

CIBP at 2800' with 6 sx of Cement

SURFACE CASING

SIZE **8-5/8"** WEIGHT **24 0#** DEPTH **671'**
 HOLE **11 25"** SX CMT **400 sx** TOC @ **Surface**
 Circulated

WELL HISTORY

Spud Date **3/17/1980**
 TD Date **3/26/1980**
 Completion Date **5/2/1980**

Yates Formation Top at 1700'

5/2/1980 2770' - 2820' - 20 Holes

6/10/1992 2892' - 2898' - 14 Holes

BUREAU OF LAND MANAGEMENT
Carlsbad Field Office
620 East Greene Street
Carlsbad, New Mexico 88220
575-234-5972

Permanent Abandonment of Federal Wells
Conditions of Approval

Failure to comply with the following Conditions of Approval may result in a Notice of Incidents of Noncompliance (INC) in accordance with 43 CFR 3163.1

1 Plugging operations shall commence within ninety (90) days from the approval date of this Notice of Intent to Abandon

If you are unable to plug the well by the 90th day provide this office, prior to the 90th day, with the reason for not meeting the deadline and a date when we can expect the well to be plugged. Failure to do so will result in enforcement action.

The rig used for the plugging procedure cannot be released and moved off without the prior approval of the authorized officer. Failure to do so may result in enforcement action

2 **Notification:** Contact the appropriate BLM office at least 24 hours prior to the commencing of any plugging operations. For wells in Chaves and Roosevelt County, call 575-627-0272, Eddy County, call 575-361-2822, Lea County, call 575-393-3612

3 **Blowout Preventers** A blowout preventer (BOP), as appropriate, shall be installed before commencing any plugging operation. The BOP must be installed and maintained as per API and manufacturer recommendations. The minimum BOP requirement is a 2M system for a well not deeper than 9,090 feet, a 3M system for a well not deeper than 13,636 feet, and a 5M system for a well not deeper than 22,727 feet

4 **Mud Requirement** Mud shall be placed between all plugs. Minimum consistency of plugging mud shall be obtained by mixing at the rate of 25 sacks (50 pounds each) of gel per 100 barrels of **brine** water. Minimum nine (9) pounds per gallon

5 **Cement Requirement** Sufficient cement shall be used to bring any required plug to the specified depth and length. Any given cement volumes on the proposed plugging procedure are merely estimates and are not final. Unless specific approval is received, no plug except the surface plug shall be less than 25 sacks of cement. Any plug that requires a tag will have a minimum WOC time of 4 hours

In lieu of a cement plug across perforations in a cased hole (not for any other plugs), a bridge plug set within 50 feet to 100 feet above the perforations shall be capped with 25 sacks of cement. If a bailer is used to cap this plug, 35 feet of cement shall be sufficient. **Before pumping or bailing cement on top of CIBP, tag will be required to verify depth. Based on depth, a tag of the cement may be deemed necessary.**

Unless otherwise specified in the approved procedure, the cement plug shall consist of either Neat Class "C", for up to 7,500 feet of depth or Neat Class "H", for deeper than 7,500 feet plugs

6 Dry Hole Marker All casing shall be cut-off at the base of the cellar or 3 feet below final restored ground level (whichever is deeper) **The BLM is to be notified a minimum of 4 hours prior to the wellhead being cut off to verify that cement is to surface in the casing and all annuluses. Wellhead cut off shall commence within ten (10) calendar days of the well being plugged. If the cut off cannot be done by the 10th day, the BLM is to be contacted with justification to receive an extension for completing the cut off.**

The well bore shall then be capped with a 4-inch pipe, 10-feet in length, 4 feet above ground and embedded in cement, unless otherwise noted in COA (requirements will be attached) The following information shall be permanently inscribed on the dry hole marker well name and number, name of the operator, lease serial number, surveyed location (quarter-quarter section, section, township and range or other authorized survey designation acceptable to the authorized officer such as metes and bounds)

7 Subsequent Plugging Reporting Within 30 days after plugging work is completed, file one original and three copies of the Subsequent Report of Abandonment, Form 3160-5 to BLM The report should give in detail the manner in which the plugging work was carried out, the extent (by depths) of cement plugs placed, and the size and location (by depths) of casing left in the well **Show date well was plugged.**

8 Trash All trash, junk and other waste material shall be contained in trash cages or bins to prevent scattering and will be removed and deposited in an approved sanitary landfill Burial on site is not permitted

Following the submission and approval of the Subsequent Report of Abandonment, surface restoration will be required See attached reclamation objectives



United States Department of the Interior

BUREAU OF LAND MANAGEMENT

Carlsbad Field Office
620 E. Greene St
Carlsbad, New Mexico 88220-6292
www.blm.gov/nm



In Reply Refer To 1310

Reclamation Objectives and Procedures

Reclamation Objective Oil and gas development is one of many uses of the public lands and resources. While development may have a short- or long-term effect on the land, successful reclamation can ensure the effect is not permanent. During the life of the development, all disturbed areas not needed for active support of production operations should undergo "interim" reclamation in order to minimize the environmental impacts of development on other resources and uses. At final abandonment, well locations, production facilities, and access roads must undergo "final" reclamation so that the character and productivity of the land and water are restored.

The long-term objective of final reclamation is to set the course for eventual ecosystem restoration, including the restoration of the natural vegetation community, hydrology, and wildlife habitats. In most cases this means returning the land to a condition approximating or equal to that which existed prior to the disturbance. The final goal of reclamation is to restore the character of the land and water to its pre-disturbance condition. The operator is generally not responsible for achieving full ecological restoration of the site. Instead, the operator must achieve the short-term stability, visual, hydrological, and productivity objectives of the surface management agency and take steps necessary to ensure that long-term objectives will be reached through natural processes.

To achieve these objectives, remove any and all contaminants, scrap/trash, equipment, pipelines and powerlines. Strip and remove caliche, contour the location to blend with the surrounding landscape, redistribute the native soils, provide erosion control as needed, rip and seed as specified in the original APD COA. This will apply to well pads, facilities, and access roads. Barricade access road at the starting point. If reserve pits have not reclaimed due to salts or other contaminants, submit a plan for approval, as to how you propose to provide adequate restoration of the pit area.

- 1 The Application for Permit to Drill or Reenter (APD, Form 3160-3), Surface Use Plan of Operations must include adequate measures for stabilization and reclamation of disturbed lands. Oil and Gas operators must plan for reclamation, both interim and final, up front in the APD process as per Onshore Oil and Gas Order No. 1.
- 2 For wells and/or access roads not having an approved plan, or an inadequate plan for surface reclamation (either interim or final reclamation), the operator must submit a proposal describing the procedures for reclamation. For interim reclamation, the appropriate time for submittal would be when filing the Well Completion or Recompletion Report and Log (Form 3160-4). For final reclamation, the appropriate time for submittal would be when filing the Notice of Intent, or the Subsequent Report of Abandonment, Sundry Notices and Reports on Wells (Form 3160-5). Interim reclamation is to be completed within 6 months of well completion, and final reclamation is to be completed within 6 months of well abandonment.
- 3 The operator must file a Subsequent Report Plug and Abandonment (Form 3160-5) following the plugging of a well.
- 4 Previous instruction had you waiting for a BLM specialist to inspect the location and provide you with reclamation requirements. If you have an approved Surface Use Plan of Operation and/or an approved Sundry Notice, you are free to proceed with reclamation as per approved APD. If you have issues or concerns, contact a BLM specialist to assist you. It would be in your interest to have a BLM specialist look at the location and access road prior to the removal of reclamation.

equipment to ensure that it meets BLM objectives. Upon conclusion submit a Form 3160-5, Subsequent Report of Reclamation. This will prompt a specialist to inspect the location to verify work was completed as per approved plans.

- 5 The approved Subsequent Report of Reclamation will be your notice that the native soils, contour and seedbed have been reestablished. If the BLM objectives have not been met the operator will be notified and corrective actions may be required.
- 6 It is the responsibility of the operator to monitor these locations and/or access roads until such time as the operator feels that the BLM objective has been met. If after two growing seasons the location and/or access roads are not showing the potential for successful revegetation, additional actions may be needed. When you feel the BLM objectives have been met submit a Final Abandonment Notice (FAN), Form 3160-5, stating that all reclamation requirements have been achieved and the location and/or access road is ready for a final abandonment inspection.
- 7 At this time the BLM specialist will inspect the location and/or access road. If the native soils and contour have been restored, and the revegetation is successful, the FAN will be approved, releasing the operator of any further liability of the location and/or access road. If the location and/or access road have not achieved the objective, you will be notified as to additional work needed or additional time being needed to achieve the objective.

If there are any questions, please feel free to contact any of the following specialists:

Jim Amos
Supervisory Petroleum Engineering Tech
575-234-5909, 575-361-2648 (Cell)

Arthur Arias
Environmental Protection Specialist
575-234-6230

Henryetta Price
Environmental Protection Specialist
575-234-5951

Shelly Tucker
Environmental Protection Specialist
575-234-5979

Trishia Bad Bear, Hobbs Field Station
Natural Resource Specialist
575-393-3612