

**NM OIL CONSERVATION
ARTESIA DISTRICT**

District I
1625 N. French Dr., Hobbs, NM 88240
Phone: (575) 393-6161 Fax: (575) 393-0720
District II
811 S. First St., Artesia, NM 88210
Phone: (575) 748-1283 Fax: (575) 748-9720
District III
1000 Rio Brazos Road, Aztec, NM 87410
Phone: (505) 334-6178 Fax: (505) 334-6170
District IV
1220 S. St. Francis Dr., Santa Fe, NM 87505
Phone: (505) 476-3460 Fax: (505) 476-3462

State of New Mexico
Energy, Minerals & Natural Resources Department
OIL CONSERVATION DIVISION
1220 South St. Francis Dr.
Santa Fe, NM 87505

APR 26 2018

Form C-102
Revised August 1, 2011
Submit one copy to appropriate
District Office

RECEIVED

AMENDED REPORT

WELL LOCATION AND ACREAGE DEDICATION PLAT

API Number 30-015-44931	Pool Code 98220	Pool Name Purple Sage Wolfcamp
Property Code 318942	Property Name SUNRISE MDP1 "8-5" FEDERAL COM	Well Number 173H
OGRID No. 16696	Operator Name OXY USA INC.	Elevation 3534.0'

Surface Location

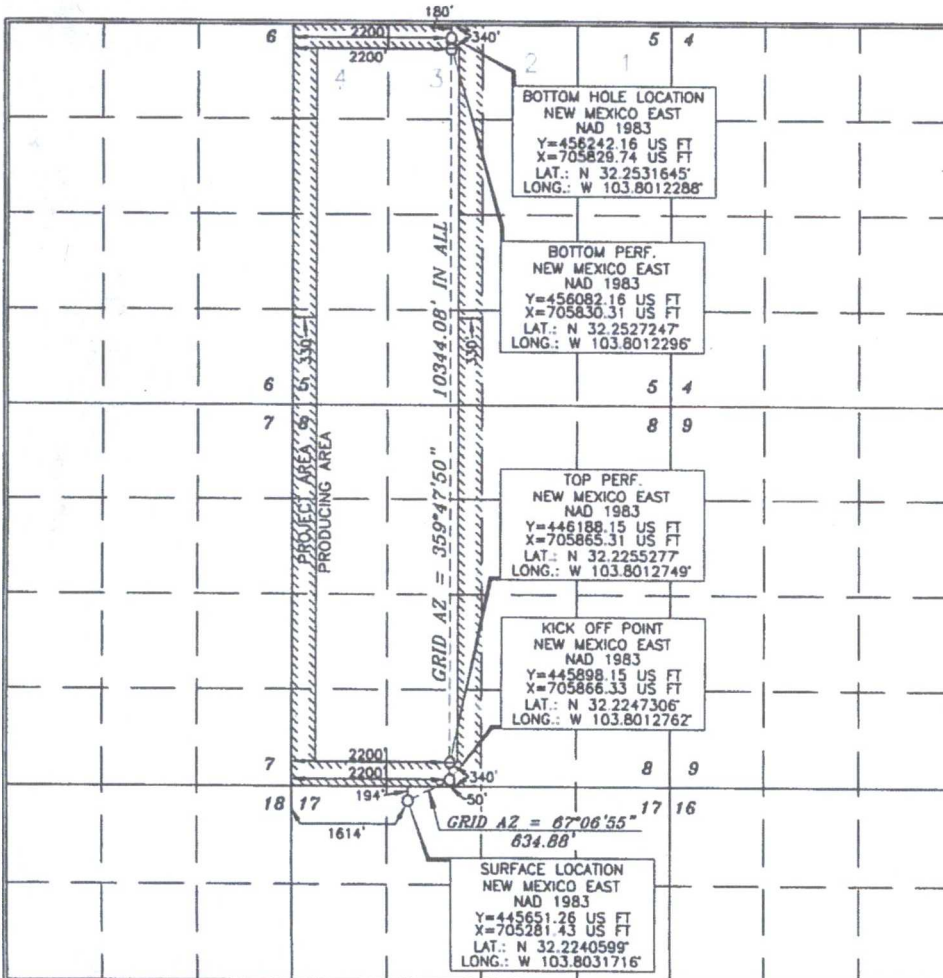
UL or lot no.	Section	Township	Range	Lot Idn	Feet from the	North/South line	Feet from the	East/West line	County
C	17	24 SOUTH	31 EAST, N.M.P.M.		194'	NORTH	1614'	WEST	EDDY

Bottom Hole Location If Different From Surface

UL or lot no.	Section	Township	Range	Lot Idn	Feet from the	North/South line	Feet from the	East/West line	County
3	5	24 SOUTH	31 EAST, N.M.P.M.		180'	NORTH	2200'	WEST	EDDY

Dedicated Acres 640	Joint or Infill Y	Consolidation Code	Order No.
-------------------------------	-----------------------------	--------------------	-----------

No allowable will be assigned to this completion until all interests have been consolidated or a non-standard unit has been approved by the division.



OPERATOR CERTIFICATION

I hereby certify that the information contained herein is true and complete to the best of my knowledge and belief, and that this organization either owns a working interest or unleased mineral interest in the land including the proposed bottom hole location or has a right to drill this well at this location pursuant to a contract with an owner of such a mineral or working interest, or to a voluntary pooling agreement or a compulsory pooling order heretofore entered by the division.

Signature: *David Stewart* Date: **11/29/18**
Printed Name: **David Stewart**
E-mail Address: **David.Stewart@oxy.com**

SURVEYOR CERTIFICATION

I hereby certify that the well location shown on this plat was plotted from the notes of actual surveys made by me or under my supervision, and that the same is true and correct to the best of my belief.

Signature and Seal of Professional Surveyor: *Terry J. Paul*
Date of Survey: **NOVEMBER 6 2017**
Certificate Number: **15079**

WO# 171106WL-c (KA)

RUP-1-18

Operator Name: OXY USA INCORPORATED

Well Name: SUNRISE MDP1 8-5-FEDERAL COM

Well Number: 173H

	NS-Foot	NS Indicator	EW-Foot	EW Indicator	Twsp	Range	Section	Aliquot/Lot/Tract	Latitude	Longitude	County	State	Meridian	Lease Type	Lease Number	Elevation	MD	TVD
PPP Leg #1	1	FSL	2206	FWL	24S	31E	5	Aliquot SESW 2	32.23911 2	- 103.8012 52	EDD Y	NEW MEXI CO	NEW MEXI CO	F	NMNM 104730	- 811 6	167 15	116 50
EXIT Leg #1	340	FNL	2200	FWL	24S	31E	5	Lot 3	32.25272 47	- 103.8012 296	EDD Y	NEW MEXI CO	NEW MEXI CO	F	NMNM 104730	- 811 2	216 43	116 46
BHL Leg #1	180	FNL	2200	FWL	24S	31E	5	Lot 3	32.25316 45	- 103.8012 288	EDD Y	NEW MEXI CO	NEW MEXI CO	F	NMNM 104730	- 811 2	218 03	116 46