

District I  
1625 N. French Dr., Hobbs, NM 88240  
Phone: (575) 393-6161 Fax: (575) 393-0720  
District II  
811 S. First St., Artesia, NM 88210  
Phone: (575) 748-1283 Fax: (575) 748-9720  
District III  
1000 Rio Brazos Road, Aztec, NM 87410  
Phone: (505) 334-6178 Fax: (505) 334-6170  
District IV  
1220 S. St. Francis Dr., Santa Fe, NM 87505  
Phone: (505) 476-3460 Fax: (505) 476-3462

State of New Mexico  
Energy, Minerals & Natural Resources Department  
OIL CONSERVATION DIVISION  
1220 South St. Francis Dr.  
Santa Fe, NM 87505

Form C-102  
Revised August 1, 2011  
Submit one copy to appropriate  
District Office

☐ AMENDED REPORT

WELL LOCATION AND ACREAGE DEDICATION PLAT

<sup>1</sup> API Number 30-015-44910	<sup>2</sup> Pool Code 98220	<sup>3</sup> Pool Name PURPLE SAGE; WOLFCAMP (GAS)
<sup>4</sup> Property Code 321284	<sup>5</sup> Property Name EAGLE POWER FEE 23-27-5 WXY	<sup>6</sup> Well Number 5H
<sup>7</sup> OGRID No. 372098	<sup>8</sup> Operator Name MARATHON OIL PERMIAN LLC	<sup>9</sup> Elevation 3180'

<sup>10</sup> Surface Location

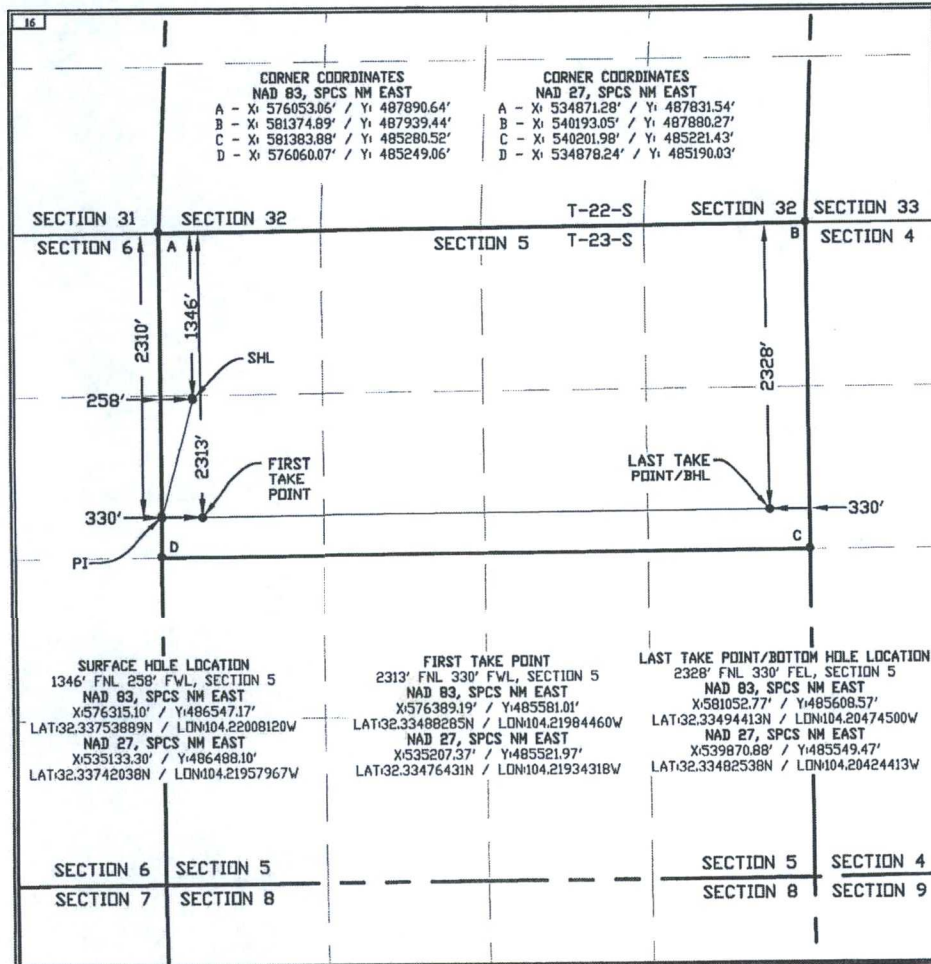
UL or lot no.	Section	Township	Range	Lot Idn	Feet from the	North/South line	Feet from the	East/West line	County
E	5	23S	27E		1346	NORTH	258	WEST	EDDY

<sup>11</sup> Bottom Hole Location If Different From Surface

UL or lot no.	Section	Township	Range	Lot Idn	Feet from the	North/South line	Feet from the	East/West line	County
H	5	23S	27E		2328	NORTH	330	EAST	EDDY

<sup>12</sup> Dedicated Acres 319.32	<sup>13</sup> Joint or Infill	<sup>14</sup> Consolidation Code	<sup>15</sup> Order No.
---	-------------------------------	----------------------------------	-------------------------

No allowable will be assigned to this completion until all interests have been consolidated or a non-standard unit has been approved by the division.



<sup>17</sup> OPERATOR CERTIFICATION

I hereby certify that the information contained herein is true and complete to the best of my knowledge and belief, and that this organization either owns a working interest or unleased mineral interest in the land including the proposed bottom hole location or has a right to drill this well at this location pursuant to a contract with an owner of such a mineral or working interest, or to a voluntary pooling agreement or a compulsory pooling order heretofore entered by the division.

Signature: Date: 04/25/2018  
Printed Name: Melissa Szudera  
E-mail Address: mszudera@marathonoil.com

<sup>18</sup> SURVEYOR CERTIFICATION

I hereby certify that the well location shown on this plat was plotted from field notes of actual surveys made by me or under my supervision, and that the same is true and correct to the best of my belief.

APRIL 23, 2018  
Date of Survey  
Signature and Seal of Professional Surveyor  
  
Certificate Number: LLOYD P. SHORT 21653

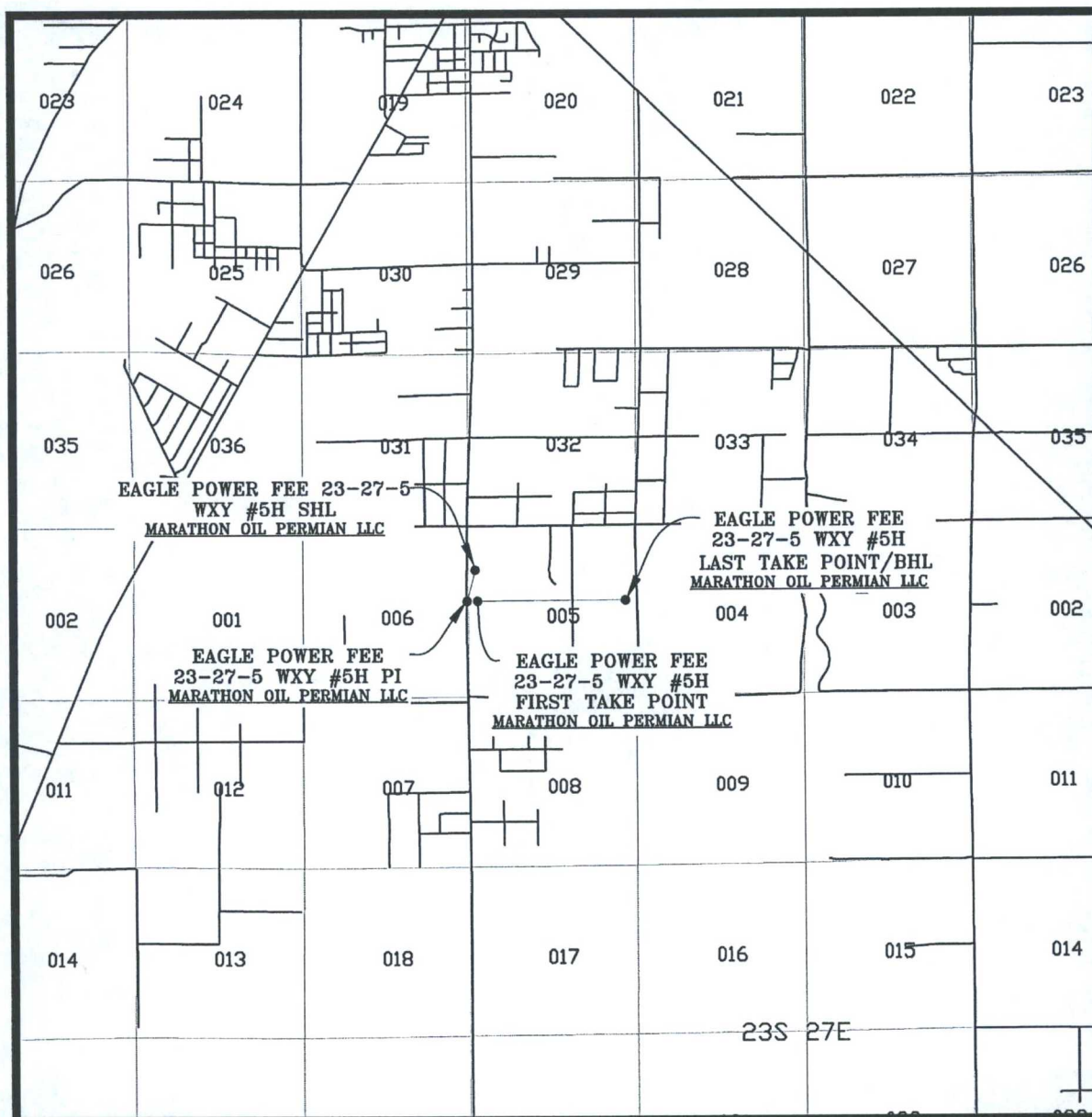
REV.	DATE	BY
------	------	----

Topographic map of the Eagle Power Fee area, showing the 23-27-5 WXY #5H SHL and WXY #5H PI sections. The map includes contour lines, spot elevations, and labels for "EAGLE POWER FEE" and "MARATHON OIL PERMIAN LLC". Key features include a "FIRST TAKE POINT" and a "LAST TAKE POINT/BHL". The map also shows various well types (GW, WW, UPL, DH) and a "GAS" line.

SCALE: 1" = 2000'  
CONTOUR INTERVAL = 10'

PREPARED BY:  
R-SQUARED GLOBAL, LLC  
1308 LOUISVILLE AVENUE, MONROE, LA 71201  
318-323-6900 OFFICE  
JOB No. R3882-003

# VICINITY MAP



SEC. 5 TWP. 23-S RGE. 27-E  
 SURVEY: N.M.P.M.  
 COUNTY: EDDY  
 DESCRIPTION: 1346' FNL & 258' FWL  
 ELEVATION: 3180'  
 OPERATOR: MARATHON OIL PERMIAN LLC  
 LEASE: EAGLE POWER FEE 23-27-5  
 U.S.G.S. TOPOGRAPHIC MAP: OTIS, N.M.

SCALE: 1" = 1 MILE

PREPARED BY:  
 R-SQUARED GLOBAL, LLC  
 1309 LOUISVILLE AVENUE, MONROE, LA 71201  
 318-323-6900 OFFICE  
 JOB No. R3882\_003