

District I
1625 N. French Dr., Hobbs, NM 88240
Phone: (575) 393-6161 Fax: (575) 393-0720

District II
811 S. First St., Artesia, NM 88210
Phone: (575) 748-1283 Fax: (575) 748-9720

District III
1000 Rio Brazos Road, Aztec, NM 87410
Phone: (505) 334-6178 Fax: (505) 334-6170

District IV
1220 S. St. Francis Dr., Santa Fe, NM 87505
Phone: (505) 476-3460 Fax: (505) 476-3462

State of New Mexico
Energy, Minerals & Natural Resources Department
OIL CONSERVATION DIVISION
ARTESIA DISTRICT
1220 South St. Francis Dr.
Santa Fe, NM 87505

Form C-102
Revised August 1, 2011
Submit one copy to appropriate
District Office

APR 23 2018
AMENDED REPORT

WELL LOCATION AND ACREAGE DEDICATION PLAT

¹ API Number 30-015-44899	² Pool Code 96473	³ Pool Name Pierce Crossing Wildcat, Bone Spring East
⁴ Property Code 321273	⁵ Property Name POKER LAKE UNIT 18 BRUSHY DRAW	
⁷ OGRID No. 210737	⁸ Operator Name BOPCO, L.P.	⁹ Elevation 3163'

¹⁰ Surface Location

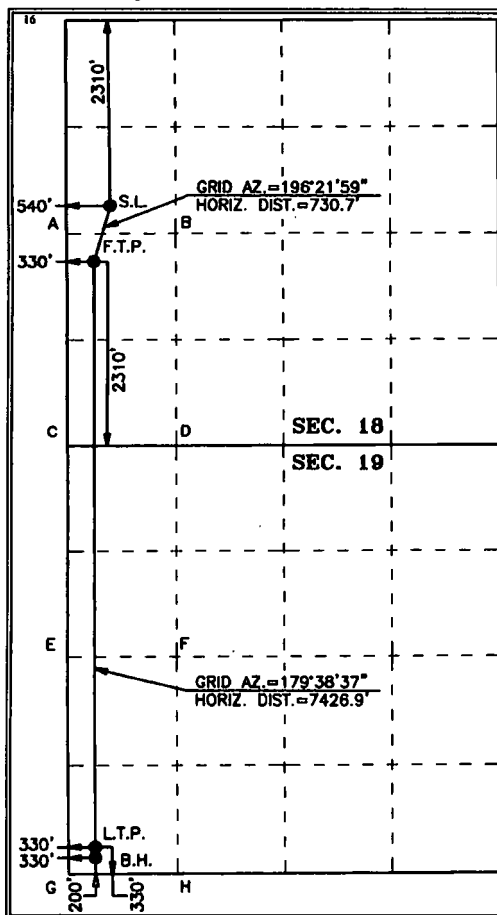
UL or lot no.	Section	Township	Range	Lot Idn	Feet from the	North/South line	Feet from the	East/West line	County
2	18	25 S	30 E		2,310	NORTH	540	WEST	EDDY

¹¹ Bottom Hole Location If Different From Surface

UL or lot no.	Section	Township	Range	Lot Idn	Feet from the	North/South line	Feet from the	East/West line	County
4	19	25 S	30 E		200	SOUTH	330	WEST	EDDY

¹² Dedicated Acres 240	¹³ Joint or Infill	¹⁴ Consolidation Code	¹⁵ Order No.
--------------------------------------	-------------------------------	----------------------------------	-------------------------

No allowable will be assigned to this completion until all interests have been consolidated or a non-standard unit has been approved by the division.



GEODETIC COORDINATES
NAD 27 NME
SURFACE LOCATION
Y = 411,665.8
X = 625,726.9
LAT. = 32.130972°N
LONG. = 103.927179°W

GEODETIC COORDINATES
NAD 83 NME
SURFACE LOCATION
Y = 411,665.1
X = 666,911.5
LAT. = 32.131096°N
LONG. = 103.927864°W

FIRST TAKE POINT
NAD 27 NME
Y = 410,905.8
X = 625,521.0
LAT. = 32.129047°N
LONG. = 103.927853°W

FIRST TAKE POINT
NAD 83 NME
Y = 410,964.1
X = 666,705.6
LAT. = 32.129171°N
LONG. = 103.928337°W

CORNER COORDINATES TABLE
NAD 27 NME

A	Y = 411,254.3 N, X = 625,189.0 E
B	Y = 411,260.5 N, X = 626,533.3 E
C	Y = 408,594.2 N, X = 625,204.2 E
D	Y = 408,601.2 N, X = 626,548.3 E
E	Y = 405,935.1 N, X = 625,221.5 E
F	Y = 405,943.0 N, X = 626,563.0 E
G	Y = 403,277.4 N, X = 625,238.2 E
H	Y = 403,285.0 N, X = 626,577.4 E

CORNER COORDINATES TABLE
NAD 83 NME

A	Y = 411,312.6 N, X = 666,373.6 E
B	Y = 411,318.8 N, X = 667,717.9 E
C	Y = 408,652.4 N, X = 666,388.9 E
D	Y = 408,659.4 N, X = 667,733.0 E
E	Y = 405,993.3 N, X = 666,406.3 E
F	Y = 406,001.2 N, X = 667,747.8 E
G	Y = 403,335.5 N, X = 666,423.1 E
H	Y = 403,343.1 N, X = 667,762.3 E

LAST TAKE POINT
NAD 27 NME
Y = 403,609.3
X = 625,566.1
LAT. = 32.108989°N
LONG. = 103.927795°W

LAST TAKE POINT
NAD 83 NME
Y = 403,667.4
X = 666,751.0
LAT. = 32.108113°N
LONG. = 103.928279°W

BOTTOM HOLE LOCATION
NAD 27 NME
Y = 403,479.3
X = 625,566.9
LAT. = 32.108631°N
LONG. = 103.927794°W

BOTTOM HOLE LOCATION
NAD 83 NME
Y = 403,537.4
X = 666,751.8
LAT. = 32.108756°N
LONG. = 103.928278°W

¹⁷ OPERATOR CERTIFICATION

I hereby certify that the information contained herein is true and complete to the best of my knowledge and belief, and that this organization either owns a working interest or unleased mineral interest in the land including the proposed bottom hole location or has a right to drill this well at this location pursuant to a contract with an owner of such a mineral or working interest, or to a voluntary pooling agreement or a compulsory pooling order heretofore entered by the division.

Signature: Stephanie Rabidue
Date: _____
Printed Name: Stephanie Rabidue
E-mail Address: srabidue@xtenergy.com

¹⁸ SURVEYOR CERTIFICATION

I hereby certify that the well location shown on this plat was plotted from field notes of actual surveys made by me or under my supervision, and that the same is true and correct to the best of my belief.

1-3-2018

Date of Survey

Signature and Seal of
Professional Surveyor:

MARK DILLON IIARP 23786
Certificate Number



AI 2017050631

RUP 4-25-18



U.S. Department of the Interior
BUREAU OF LAND MANAGEMENT

Drilling Plan Data Report

04/19/2018

APD ID: 10400024300

Submission Date: 11/10/2017

Operator Name: BOPCO LP

Well Name: POKER LAKE UNIT 18 BRUSHY DRAW

Well Number: 901H

Well Type: OIL WELL

Well Work Type: Drill

Highlighted data
reflects the most
recent changes

[Show Final Text](#)

Section 1 - Geologic Formations

Formation ID	Formation Name	Elevation	True Vertical Depth	Measured Depth	Lithologies	Mineral Resources	Producing Formation
1	QUATERNARY	3163	0	0	ALLUVIUM,SILTSTONE	NONE	No
2	RUSTLER	2418	751	751	SANDSTONE	USEABLE WATER	No
3	TOP SALT	2339	830	830	SALT	NONE	No
4	BASE OF SALT	-69	3238	3238	SALT	NONE	No
5	DELAWARE	-286	3455	3455	SANDSTONE	NATURAL GAS,OIL,OTHER : Produced Water	No
6	CHERRY CANYON	-1217	4386	4386	SANDSTONE	NATURAL GAS,OIL,OTHER : Produced Water	No
7	BRUSHY CANYON	-2868	6037	6037	SANDSTONE	NATURAL GAS,OIL,OTHER : Produced Water	No
8	BONE SPRING 1ST	-5043	8212	8212	SANDSTONE	NATURAL GAS,OIL,OTHER : Produced Water	No
9	BONE SPRING 2ND	-5877	9046	9046	SANDSTONE	NATURAL GAS,OIL,OTHER : Produced Water	Yes

Section 2 - Blowout Prevention

Pressure Rating (PSI): 5M

Rating Depth: 10444

Equipment: The blow out preventer equipment (BOP) for this well consists of a 13-5/8" minimum 5M Hydril and a 13-5/8" minimum 5M Double Ram BOP. Max bottom hole pressure should not exceed 4996 psi.

Requesting Variance? YES

Variance request: A variance is requested to allow use of a flex hose as the choke line from the BOP to the Choke Manifold. If this hose is used, a copy of the manufacturer's certification and pressure test chart will be kept on the rig. Attached is an example of a certification and pressure test chart. The manufacturer does not require anchors.

Testing Procedure: All BOP testing will be done by an independent service company. Annular pressure tests will be limited to 50% of the working pressure. When nipping up, the BOP test will be limited to 5,000 psi. All BOP tests will include a low pressure test as per BLM regulations. The 5M BOP diagram is attached. Blind rams will be function tested each trip, pipe rams will be function tested each day.

Choke Diagram Attachment:

PLU_18_BD_901H_5MCM_20171110064454.pdf