

District I  
1625 N. French Dr., Hobbs, NM 88240  
Phone: (575) 393-6161 Fax: (575) 393-0720  
District II  
811 S. First St., Artesia, NM 88210  
Phone: (575) 748-1283 Fax: (575) 748-9720  
District III  
1000 Rio Brazos Road, Aztec, NM 87410  
Phone: (505) 334-6178 Fax: (505) 334-6170  
District IV  
1220 S. St. Francis Dr., Santa Fe, NM 87505  
Phone: (505) 476-3460 Fax: (505) 476-3462

State of New Mexico  
Energy, Minerals & Natural Resources Department  
OIL CONSERVATION DIVISION  
1220 South St. Francis Dr.  
Santa Fe, NM 87505

Form C-102  
Revised August 1, 2011  
Submit one copy to appropriate  
District Office

JUL 24 2018

☒ AMENDED REPORT

RECEIVED

WELL LOCATION AND ACREAGE DEDICATION PLAT

<sup>1</sup> API Number 30-015-44650	<sup>2</sup> Pool Code 64010	<sup>3</sup> Pool Name WELCH; BONE SPRING
<sup>4</sup> Property Code 320688	<sup>5</sup> Property Name COTTONWOOD 28-33 FED COM 2BS	<sup>6</sup> Well Number 7H
<sup>7</sup> OGRID No. 372137	<sup>8</sup> Operator Name CHISHOLM ENERGY OPERATING, LLC	<sup>9</sup> Elevation 3384'

<sup>10</sup> Surface Location

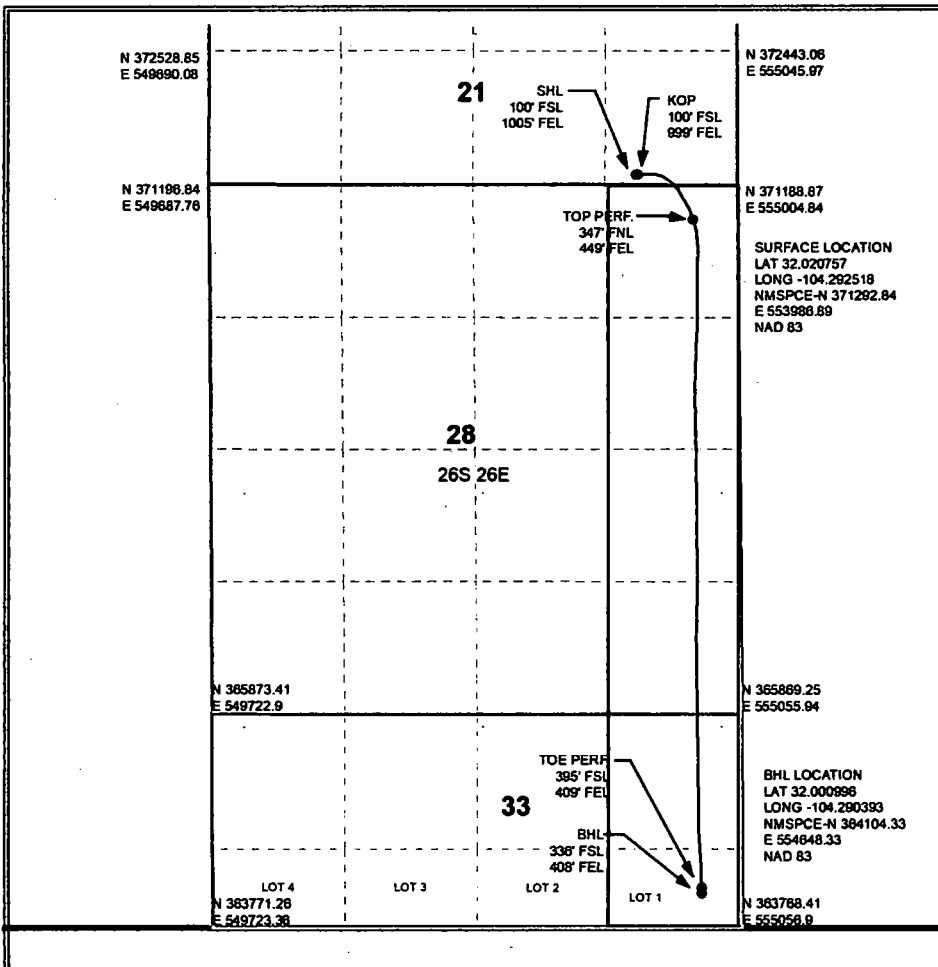
UL or lot no. P	Section 21	Township 26 S	Range 26 E	Lot Idn	Feet from the 100	North/South line SOUTH	Feet from the 1005	East/West line EAST	EDDY County
--------------------	---------------	------------------	---------------	---------	----------------------	---------------------------	-----------------------	------------------------	-------------

<sup>11</sup> Bottom Hole Location If Different From Surface

UL or lot no. LOT 1	Section 33	Township 26 S	Range 26 E	Lot Idn	Feet from the 336	North/South line SOUTH	Feet from the 408	East/West line EAST	EDDY County
------------------------	---------------	------------------	---------------	---------	----------------------	---------------------------	----------------------	------------------------	-------------

<sup>12</sup> Dedicated Acres 223.23	<sup>13</sup> Joint or Infill	<sup>14</sup> Consolidation Code	<sup>15</sup> Order No.
---	-------------------------------	----------------------------------	-------------------------

No allowable will be assigned to this completion until all interests have been consolidated or a non-standard unit has been approved by the division.



<sup>17</sup> OPERATOR CERTIFICATION

I hereby certify that the information contained herein is true and complete to the best of my knowledge and belief, and that this organization either owns a working interest or unleased mineral interest in the land including the proposed bottom hole location or has a right to drill this well at this location pursuant to a contract with an owner of such a mineral or working interest, or to a voluntary pooling agreement or a compulsory pooling order heretofore entered by the division.

*Jennifer Elrod* 07/06/2018  
Signature Date

JENNIFER ELROD

Printed Name

jelrod@chisholmenergy.com

E-mail Address

<sup>18</sup> SURVEYOR CERTIFICATION

I hereby certify that the well location shown on this plat was plotted from field notes of actual surveys made by me or under my supervision, and that the same is true and correct to the best of my belief.

Date of Survey

Signature and Seal of Professional Surveyor:

Certificate Number