

**District I**  
1625 N. French Dr., Hobbs, NM 88240  
Phone: (575) 393-6161 Fax: (575) 393-0720

**District II**  
811 S. First St., Artesia, NM 88210  
Phone: (575) 748-1283 Fax: (575) 748-9720

**District III**  
1000 Rio Brazos Road, Aztec, NM 87410  
Phone: (505) 334-6178 Fax: (505) 334-6170

**District IV**  
1220 S. St. Francis Dr., Santa Fe, NM 87505  
Phone: (505) 476-3460 Fax: (505) 476-3462

**State of New Mexico NM OIL CONSERVATION**  
**Energy Minerals and Natural Resources**  
**Oil Conservation Division**  
**1220 South St. Francis Dr.**  
**Santa Fe, NM 87505**

Form C-101  
Revised July 18, 2013

ARTESIA DISTRICT  
AUG 30 2018 AMENDED REPORT

RECEIVED

**APPLICATION FOR PERMIT TO DRILL, RE-ENTER, DEEPEN, PLUGBACK, OR ADD A ZONE**

<sup>1</sup> Operator Name and Address <b>BOPCO, LP</b> <b>6401 Holiday Hill Rd, Bldg 5, Midland, TX 79707</b>		<sup>2</sup> OGRID Number <b>260737</b>
<sup>4</sup> Property Code <b>322318</b>		<sup>3</sup> API Number <b>30-015-45224</b>
<sup>5</sup> Property Name <b>POKER LAKE UNIT 16 BS STATE SWD</b>		<sup>6</sup> Well No. <b>1</b>

**7. Surface Location**

UL - Lot	Section	Township	Range	Lot Idn	Feet from	N/S Line	Feet From	E/W Line	County
<b>D</b>	<b>16</b>	<b>25S</b>	<b>31E</b>		<b>660</b>	<b>NORTH</b>	<b>660</b>	<b>WEST</b>	<b>Eddy</b>

**8. Proposed Bottom Hole Location**

UL - Lot	Section	Township	Range	Lot Idn	Feet from	N/S Line	Feet From	E/W Line	County

**9. Pool Information**

<b>SWD; Devonian</b>	Pool Name	Pool Code <b>96101</b>
----------------------	-----------	---------------------------

**Additional Well Information**

<sup>11</sup> Work Type <b>NW</b>	<sup>12</sup> Well Type <b>D</b>	<sup>13</sup> Cable/Rotary <b>R</b>	<sup>14</sup> Lease Type <b>STATE</b>	<sup>15</sup> Ground Level Elevation <b>3,387'</b>
<sup>16</sup> Multiple	<sup>17</sup> Proposed Depth <b>18,139'</b>	<sup>18</sup> Formation <b>DEVONIAN</b>	<sup>19</sup> Contractor	<sup>20</sup> Spud Date <b>ASAP</b>
Depth to Ground water		Distance from nearest fresh water well		Distance to nearest surface water

☒ We will be using a closed-loop system in lieu of lined pits

**21. Proposed Casing and Cement Program**

Type	Hole Size	Casing Size	Casing Weight/ft	Setting Depth	Sacks of Cement	Estimated TOC
Surface	<b>24</b>	<b>18.625</b>	<b>J-55 87.5# BTC</b>	<b>700'</b>	<b>1280</b>	<b>0'</b>
Inter	<b>17.5</b>	<b>13.375</b>	<b>HCL-80 68# BTC</b>	<b>4,200'</b>	<b>3685</b>	<b>0'</b>
Prod	<b>12.25</b>	<b>9.625</b>	<b>P-110 53.5# BTC</b>	<b>12,360'</b>	<b>2350</b>	<b>3,600'</b>

**Casing/Cement Program: Additional Comments**

**Prod Liner: 8.5" hole, 7" P-110 32# BTC csg @ 12,000'-16,910' w/725.sx cmt. TOC @ 12,000'. Prod hole: 6" 12,000'-18,139'**

**22. Proposed Blowout Prevention Program**

Type	Working Pressure	Test Pressure	Manufacturer
<b>Cameron Double Ram</b>	<b>10,000psi</b>	<b>5,000psi</b>	

<sup>23</sup> I hereby certify that the information given above is true and complete to the best of my knowledge and belief.  
I further certify that I have complied with 19.15.14.9 (A) NMAC ☒ and/or 19.15.14.9 (B) NMAC ☒, if applicable.

Signature: *Kelly Kardos*

Printed name: **Kelly Kardos**

Title: **Regulatory Coordinator**

E-mail Address: **kelly\_kardos@xtoenergy.com**

Date: **08-29-18**

Phone: **432-620-4374**

**OIL CONSERVATION DIVISION**

Approved By:

*Raymond H. Delany*

Title:

Approved Date: **8-31-18**

Expiration Date: **8-31-20**

Conditions of Approval Attached **Approved C-108.**

District I  
1625 N. French Dr., Hobbs, NM 88240  
Phone: (575) 393-6161 Fax: (575) 393-0720  
District II  
811 S. First St., Artesia, NM 88210  
Phone: (575) 748-1283 Fax: (575) 748-9720  
District III  
1000 Rio Brazos Road, Aztec, NM 87410  
Phone: (505) 334-6178 Fax: (505) 334-6170  
District IV  
1220 S. St. Francis Dr., Santa Fe, NM 87505  
Phone: (505) 476-3460 Fax: (505) 476-3462

State of New Mexico  
Energy, Minerals & Natural Resources Department  
OIL CONSERVATION DIVISION  
1220 South St. Francis Dr.  
Santa Fe, NM 87505

NM OIL CONSERVATION  
ARTESIA DISTRICT

Form C-102

Revised August 1, 2011

Submit one copy to appropriate

District Office

RECEIVED

☐ AMENDED REPORT

WELL LOCATION AND ACREAGE DEDICATION PLAT

<sup>1</sup> API Number <b>30-015-45224</b>	<sup>2</sup> Pool Code <b>96101</b>	<sup>3</sup> Pool Name <b>SWD; DEVONIAN</b>
<sup>4</sup> Property Code <b>322318</b>	<sup>5</sup> Property Name <b>POKER LAKE UNIT 16 BS STATE SWD</b>	<sup>6</sup> Well Number <b>1</b>
<sup>7</sup> OGRID No. <b>260737</b>	<sup>8</sup> Operator Name <b>XTO PERMIAN OPERATING, LLC.</b>	<sup>9</sup> Elevation <b>3,387'</b>

<sup>10</sup> Surface Location

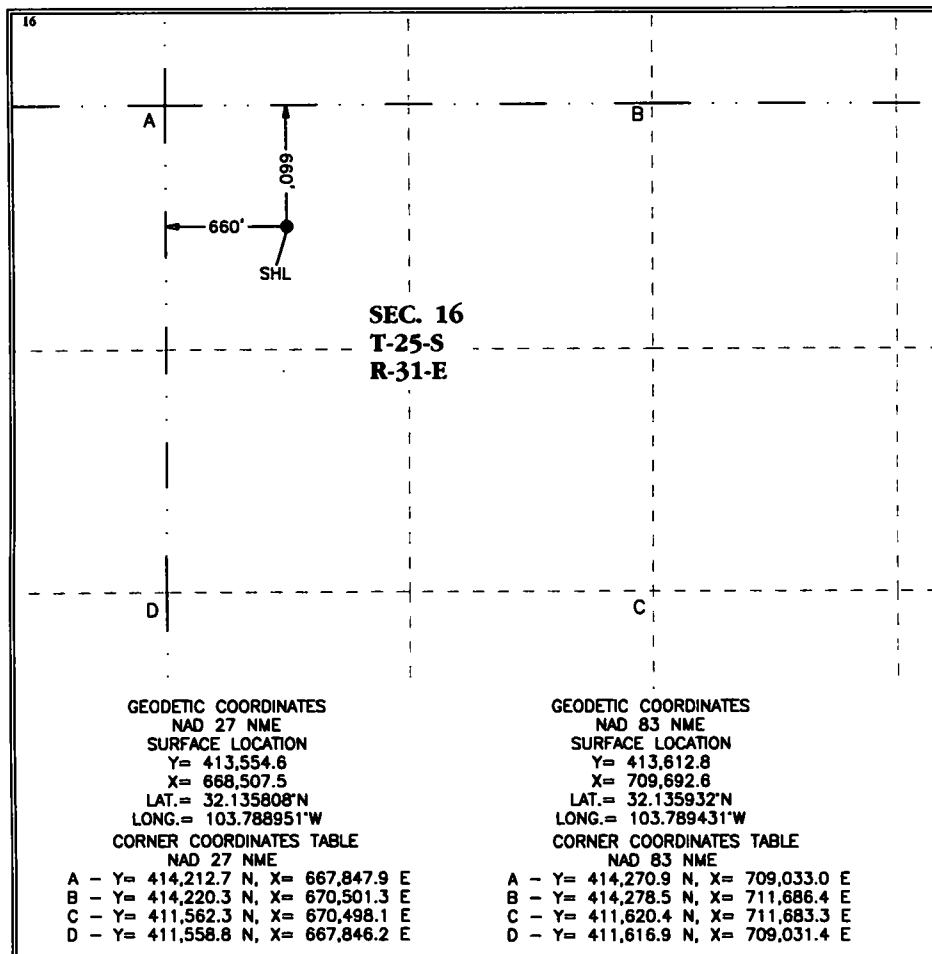
UL or lot no.	Section	Township	Range	Lot Idn	Feet from the	North/South line	Feet from the	East/West line	County
D	16	25 S	31 E		660	NORTH	660	WEST	EDDY

<sup>11</sup> Bottom Hole Location If Different From Surface

UL or lot no.	Section	Township	Range	Lot Idn	Feet from the	North/South line	Feet from the	East/West line	County

<sup>12</sup> Dedicated Acres <b>0</b>	<sup>13</sup> Joint or Infill	<sup>14</sup> Consolidation Code	<sup>15</sup> Order No.
---	-------------------------------	----------------------------------	-------------------------

No allowable will be assigned to this completion until all interests have been consolidated or a non-standard unit has been approved by the division.



<sup>17</sup> OPERATOR CERTIFICATION

I hereby certify that the information contained herein is true and complete to the best of my knowledge and belief, and that this organization either owns a working interest or unleased mineral interest in the land including the proposed bottom hole location or has a right to drill this well at this location pursuant to a contract with an owner of such a mineral or working interest, or to a voluntary pooling agreement or a compulsory pooling order heretofore entered by the division.

*Kelly Kardos* 8/29/18  
Signature Date

Kelly Kardos

Printed Name

kelly\_kardos@xtoenergy.com

E-mail Address

<sup>18</sup> SURVEYOR CERTIFICATION

I hereby certify that the well location shown on this plat was plotted from field notes of actual surveys made by me or under my supervision, and that the same is true and correct to the best of my belief.

06-15-2018

Date of Survey

Signature and Seal of  
Professional Surveyor:

*[Signature]*

MARK DILLON HARP 23786

Certificate Number



RR

2018051186

RWP 8-31-18

# PLU Big Sinks 16 SWD

Proposed SWD Schematic (Aug 28, 2018)

County: Eddy  
SHL: 660' FNL, 660' FWL  
Sec 16, T 25S, R 31E

BHL: 660' FNL, 660' FWL  
Sec 16, T 25S, R 31E



AFE # 1802748  
XTO ID # N/A  
API # N/A  
Elevation GL 3387', KB 3414' (27' AGL)  
Rig: TBD (RKB 27')

Geology	Casing & Cement	Wellhead	Hole Size	General Notes
<b>TVD Formation</b>		<b>(Tech Data Sheet)</b>		
514' Rustler	<u>Lead (100% OH excess)</u> 410 sx 12.8ppg Poz/C Top of Lead @ 0  <u>Tail (100% OH excess)</u> 870 sx 14.8ppg Class C Top of Tail @ 300'  <b>18-5/8" 87.5# J-55 BTC</b>	700' MD	24"	
894' Top Salt	<u>Lead (150% OH excess)</u> 3000 sx 12.8ppg Poz/C Top of Lead @ 0  <u>Tail (100% OH excess)</u> 685 sx 14.8ppg Class C Top of Tail @ 3600'  <b>13-3/8" 68# HCL-80 BTC</b>	4200' MD	17-1/2"	
4,254' Delaware	<u>Lead (100% OH excess)</u> 1950 sx 11.5ppg Poz/H Top of Lead @ 3600'   <u>Tail (100% OH excess)</u> 400 sx 14.8ppg Poz/H Top of Tail @ 11660'  <b>9-5/8" 53.5# P-110 BTC</b>	12000' MD	12-1/4"	
8,139' Bone Spring		12360' MD		
11,564' Wolfcamp				
12,159' Wolfcamp B				
13,939' Strawn				
14,064' Atoka				
14,534' Morrow	<u>Tail (40% OH excess)</u> 725 sx 14.5ppg Poz/H Top of Tail @ 12000'  <b>7" 32# P-110 BTC</b>	16910' MD	8-1/2"	
16,079' Mississippian Lm				
16,764' Woodford				
16,889' Devonian				
18,039' Simpson	Open hole completion	18,139' MD 18,139' TVD	6"	
18,139' TVD at BHL				
		<b>Approvals</b>		
Prepared by: _____		Peer Reviewed by: _____		Date _____
Reviewed by: _____		Approved by: _____		