

UNITED STATES  
DEPARTMENT OF THE INTERIOR  
BUREAU OF LAND MANAGEMENTSEP 12 2018  
OCD Artesia  
DISTRICT II-ARTESIA O.C.D.FORM APPROVED  
OMB No. 1004-0137  
Expires: July 31, 2010

## WELL COMPLETION OR RECOMPLETION REPORT AND LOG

5. Lease Serial No.  
NMNM19619

6. If Indian, Allottee or Tribe Name

7. Unit or CA Agreement Name and No.

8. Lease Name and Well No.  
ARMSTRONG 26 35 W11P FED COM 1H9. API Well No.  
30-015-43753-00-S110. Field and Pool, or Exploratory  
JENNINGS11. Sec., T., R., M., or Block and Survey  
or Area Sec 26 T25S R31E Mer NMP12. County or Parish  
EDDY13. State  
NM17. Elevations (DF, KB, RT, GL)\*  
3339 GL1a. Type of Well ☐ Oil Well ☒ Gas Well ☐ Dry ☐ Other  
b. Type of Completion ☒ New Well ☐ Work Over ☐ Deepen ☐ Plug Back ☐ Diff. Resvr.  
Other2. Name of Operator  
MEWBOURNE OIL COMPANYContact: JACKIE LATHAN  
E-Mail: jlathan@mewbourne.com3. Address P O BOX 5270  
HOBBS, NM 882413a. Phone No. (include area code)  
Ph: 575-393-5905

4. Location of Well (Report location clearly and in accordance with Federal requirements)\*

At surface Sec 26 T25S R31E Mer NMP  
SESE 2625FSL 380FELAt top prod interval reported below Sec 26 T25S R31E Mer NMP  
NESE 2074FSL 971FELAt total depth Sec 35 T25S R31E Mer NMP  
SESE 334FSL 978FEL14. Date Spudded  
10/31/201715. Date T.D. Reached  
11/28/201716. Date Completed  
☐ D & A ☒ Ready to Prod.  
07/24/201818. Total Depth: MD 19465  
TVD 1208919. Plug Back T.D.: MD 19410  
TVD 1208920. Depth Bridge Plug Set: MD  
TVD21. Type Electric & Other Mechanical Logs Run (Submit copy of each)  
CCL CNL CBL&GR22. Was well cored? ☒ No ☐ Yes (Submit analysis)  
Was DST run? ☒ No ☐ Yes (Submit analysis)  
Directional Survey? ☐ No ☒ Yes (Submit analysis)

## 23. Casing and Liner Record (Report all strings set in well)

| Hole Size | Size/Grade   | Wt. (#/ft.) | Top (MD) | Bottom (MD) | Stage Cementer Depth | No. of Sks. & Type of Cement | Slurry Vol. (BBL) | Cement Top* | Amount Pulled |
|-----------|--------------|-------------|----------|-------------|----------------------|------------------------------|-------------------|-------------|---------------|
| 17.500    | 13.375 J55   | 54.5        | 0        | 1027        |                      | 850                          | 252               | 0           |               |
| 12.250    | 9.625 N80    | 40.0        | 0        | 4245        |                      | 1150                         | 338               | 0           |               |
| 8.750     | 7.000 HCP110 | 29.0        | 0        | 12415       |                      | 775                          | 352               | 3945        |               |
| 6.125     | 4.500 HCP110 | 13.5        | 11408    | 19405       |                      | 475                          | 210               | 0           |               |
|           |              |             |          |             |                      |                              |                   |             |               |
|           |              |             |          |             |                      |                              |                   |             |               |

## 24. Tubing Record

| Size | Depth Set (MD) | Packer Depth (MD) | Size | Depth Set (MD) | Packer Depth (MD) | Size | Depth Set (MD) | Packer Depth (MD) |
|------|----------------|-------------------|------|----------------|-------------------|------|----------------|-------------------|
|      |                |                   |      |                |                   |      |                |                   |

## 25. Producing Intervals

| Formation   | Top   | Bottom | Perforated Interval | Size  | No. Holes | Perf. Status |
|-------------|-------|--------|---------------------|-------|-----------|--------------|
| A) WOLFCAMP | 11700 | 19465  | 12437 TO 19405      | 0.390 | 1512      | OPEN         |
| B)          |       |        |                     |       |           |              |
| C)          |       |        |                     |       |           |              |
| D)          |       |        |                     |       |           |              |

## 27. Acid, Fracture, Treatment, Cement Squeeze, Etc.

| Depth Interval | Amount and Type of Material   |
|----------------|---|
| 12437 TO 19405 | 17,405,369 GALS SLICKWATER CARRYING 16,764,535# WHITE 100 MESH SAND |
|                |   |
|                |   |
|                |   |

## 28. Production - Interval A

| Date First Produced | Test Date            | Hours Tested | Test Production | Oil BBL | Gas MCF | Water BBL | Oil Gravity Corr. API | Gas Gravity | Production Method |
|---------------------|----------------------|--------------|-----------------|---------|---------|-----------|-----------------------|-------------|-------------------|
| 07/24/2018          | 07/28/2018           | 24           | →               | 289.0   | 1491.0  | 1486.0    | 55.0                  | 0.72        | FLows FROM WELL   |
| Choke Size          | Tbg. Press. Flwg. SI | Csg. Press.  | 24 Hr. Rate     | Oil BBL | Gas MCF | Water BBL | Gas:Oil Ratio         | Well Status |                   |
| 21/64               | SI                   | 3900.0       | →               | 289     | 1491    | 1486      | 5159                  | PGW         |                   |

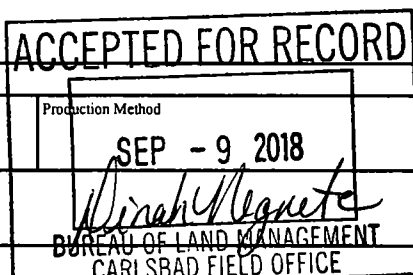
## 28a. Production - Interval B

| Date First Produced | Test Date            | Hours Tested | Test Production | Oil BBL | Gas MCF | Water BBL | Oil Gravity Corr. API | Gas Gravity | Production Method |
|---------------------|----------------------|--------------|-----------------|---------|---------|-----------|-----------------------|-------------|-------------------|
|                     |                      |              | →               |         |         |           |                       |             |                   |
| Choke Size          | Tbg. Press. Flwg. SI | Csg. Press.  | 24 Hr. Rate     | Oil BBL | Gas MCF | Water BBL | Gas:Oil Ratio         | Well Status |                   |
|                     | SI                   |              | →               |         |         |           |                       |             |                   |

(See Instructions and spaces for additional data on reverse side)

ELECTRONIC SUBMISSION #431754 VERIFIED BY THE BLM WELL INFORMATION SYSTEM

\*\* BLM REVISED \*\* BLM REVISED \*\* BLM REVISED \*\* BLM REVISED \*\* BLM REVISED \*\*



Reclamation Due: 1/24/2019

## 28b. Production - Interval C

| Date First Produced | Test Date            | Hours Tested | Test Production | Oil BBL | Gas MCF | Water BBL | Oil Gravity Corr. API | Gas Gravity | Production Method |
|---------------------|----------------------|--------------|-----------------|---------|---------|-----------|-----------------------|-------------|-------------------|
|                     |                      |              | →               |         |         |           |                       |             |                   |
| Choke Size          | Tbg. Press. Flwg. SI | Csg. Press.  | 24 Hr. Rate     | Oil BBL | Gas MCF | Water BBL | Gas:Oil Ratio         | Well Status |                   |
|                     |                      |              | →               |         |         |           |                       |             |                   |

## 28c. Production - Interval D

| Date First Produced | Test Date            | Hours Tested | Test Production | Oil BBL | Gas MCF | Water BBL | Oil Gravity Corr. API | Gas Gravity | Production Method |
|---------------------|----------------------|--------------|-----------------|---------|---------|-----------|-----------------------|-------------|-------------------|
|                     |                      |              | →               |         |         |           |                       |             |                   |
| Choke Size          | Tbg. Press. Flwg. SI | Csg. Press.  | 24 Hr. Rate     | Oil BBL | Gas MCF | Water BBL | Gas:Oil Ratio         | Well Status |                   |
|                     |                      |              | →               |         |         |           |                       |             |                   |

## 29. Disposition of Gas(Sold, used for fuel, vented, etc.)

SOLD

## 30. Summary of Porous Zones (Include Aquifers):

Show all important zones of porosity and contents thereof: Cored intervals and all drill-stem tests, including depth interval tested, cushion used, time tool open, flowing and shut-in pressures and recoveries.

## 31. Formation (Log) Markers

| Formation | Top   | Bottom | Descriptions, Contents, etc. | Name        | Top         |
|-----------|-------|--------|------------------------------|-------------|-------------|
|           |       |        |                              |             | Meas. Depth |
| WOLFCAMP  | 11700 | 19465  | OIL, WATER & GAS             | RUSTLER     | 839         |
|           |       |        |                              | TOP SALT    | 1209        |
|           |       |        |                              | CASTILE     | 2241        |
|           |       |        |                              | RAMSEY      | 4102        |
|           |       |        |                              | DELAWARE    | 4321        |
|           |       |        |                              | MANZANITA   | 5506        |
|           |       |        |                              | BONE SPRING | 8288        |
|           |       |        |                              | WOLFCAMP    | 11700       |

## 32. Additional remarks (include plugging procedure):

Logs will be sent by regular mail.

## 33. Circle enclosed attachments:

1. Electrical/Mechanical Logs (1 full set req'd.)      2. Geologic Report      3. DST Report      4. Directional Survey  
5. Sundry Notice for plugging and cement verification      6. Core Analysis      7. Other:

## 34. I hereby certify that the foregoing and attached information is complete and correct as determined from all available records (see attached instructions):

Electronic Submission #431754 Verified by the BLM Well Information System.

For MEWBOURNE OIL COMPANY, sent to the Carlsbad

Committed to AFMSS for processing by DUNCAN WHITLOCK on 09/06/2018 (18DW0222SE)

Name (please print) JACKIE LATHAN

Title AUTHORIZED REPRESENTATIVE

Signature (Electronic Submission)

Date 08/17/2018

Title 18 U.S.C. Section 1001 and Title 43 U.S.C. Section 1212, make it a crime for any person knowingly and willfully to make to any department or agency of the United States any false, fictitious or fraudulent statements or representations as to any matter within its jurisdiction.

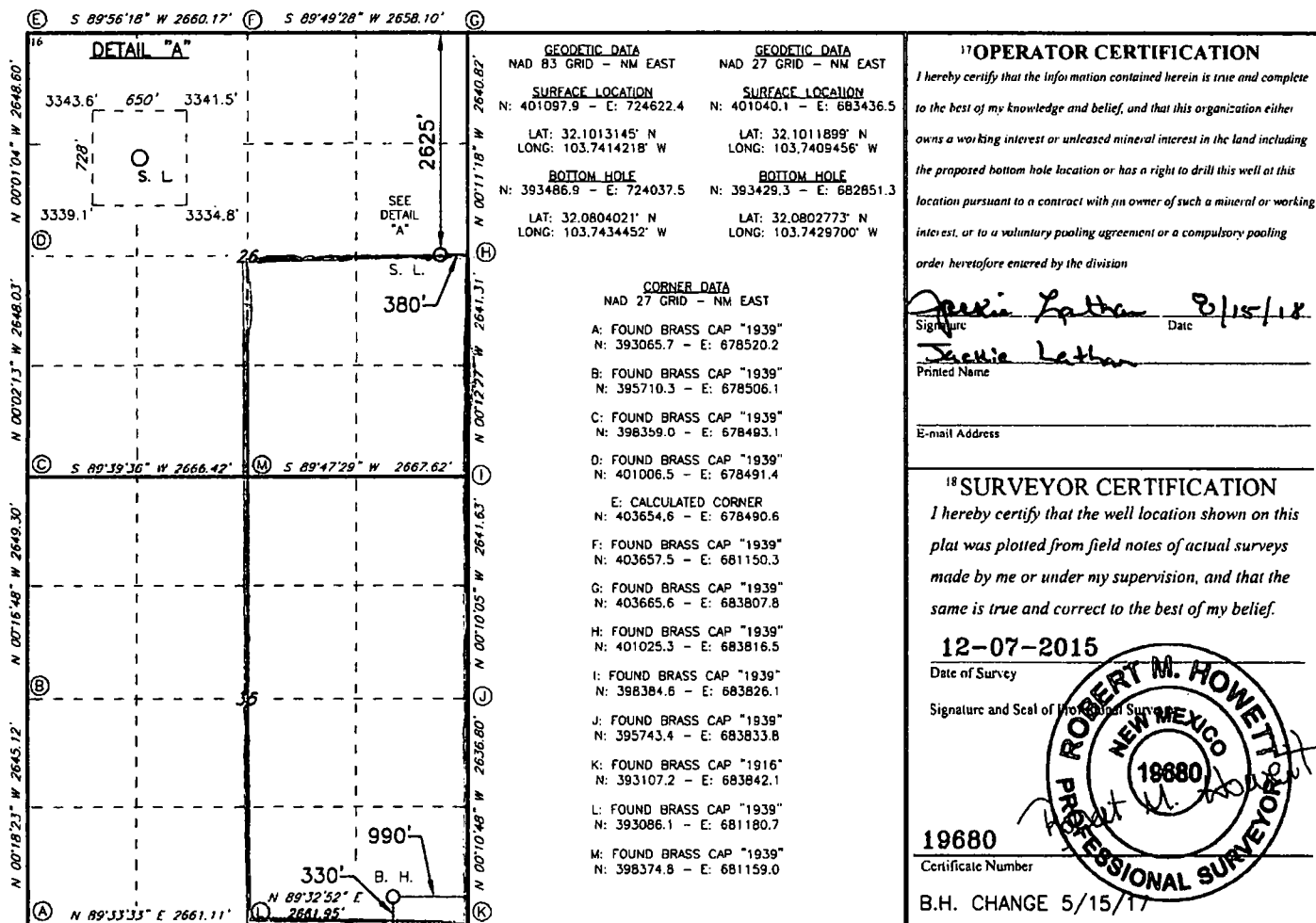
\*\* REVISED \*\* REVISED \*\* REVISED \*\* REVISED \*\* REVISED \*\* REVISED \*\* REVISED \*\* REVISED \*\*

☐ AMENDED REPORT

## WELL LOCATION AND ACREAGE DEDICATION PLAT

|   |               |   |              |  |                       |                           |                      |                        |                |
|---|---------------|---|--------------|--|-----------------------|---------------------------|----------------------|------------------------|----------------|
| 1 API Number<br>30-015                            |               | 2 Pool Code<br>98220                                |              | 3 Pool Name<br>Purple Sage; Wolfcamp (Gas) |                       |                           |                      |                        |                |
| 4 Property Code<br>319610                         |               | 5 Property Name<br>ARMSTRONG 26/35 WIIP FEDERAL COM |              |  |                       | 6 Well Number<br>1H       |                      |                        |                |
| 7 OGRID NO.<br>14744                              |               | 8 Operator Name<br>MEWBOURNE OIL COMPANY            |              |  |                       | 9 Elevation<br>3339'      |                      |                        |                |
| 10 Surface Location                               |               |   |              |  |                       |                           |                      |                        |                |
| UL or lot no.<br>H                                | Section<br>26 | Township<br>25S                                     | Range<br>31E | Lot 1dn                                    | Feet from the<br>2625 | North/South line<br>NORTH | Feet From the<br>380 | East/West line<br>EAST | County<br>EDDY |
| 11 Bottom Hole Location If Different From Surface |               |   |              |  |                       |                           |                      |                        |                |
| 11L or lot no.<br>P                               | Section<br>35 | Township<br>25S                                     | Range<br>31E | Lot 1dn                                    | Feet from the<br>334  | North/South line<br>SOUTH | Feet from the<br>978 | East/West line<br>EAST | County<br>EDDY |
| 12 Dedicated Acres<br>480                         |               | 13 Joint or Infill                                  |              | 14 Consolidation Cnde                      |                       | 15 Order No.              |                      |                        |                |

**No allowable will be assigned to this completion until all interest have been consolidated or a non-standard unit has been approved by the division.**



**Job No.: LS1510582D**