



MEWBOURNE
OIL COMPANY

30-015-43902

Mewbourne Oil Company

Eddy County, N.M. Nad (83)

Section 18-20S-29E Derringer 18 B2MP Fed #1H

Derringer 18 B2MP Fed #1H

Original Hole

Design: Original Hole

Standard Survey Report

17 April, 2018





Microsoft Survey Report



Company: Mewbourne Oil Company
Project: Eddy County, N.M. Nad (83)
Site: Section 18-20S-29E Derringer 18 B2MP Fed #1H
Well: Derringer 18 B2MP Fed #1H
Wellbore: Original Hole
Design: Original Hole

Local Co-ordinate Reference: Well Derringer 18 B2MP Fed #1H
TVD Reference: 3251 + 27 @ 3278.0usft (Patterson 560)
MD Reference: 3251 + 27 @ 3278.0usft (Patterson 560)
North Reference: Grid
Survey Calculation Method: Minimum Curvature
Database: Stryker_EDM

Project	Eddy County, N.M. Nad (83)		
Map System:	US State Plane 1983	System Datum:	Mean Sea Level
Geo Datum:	North American Datum 1983		
Map Zone:	New Mexico Eastern Zone		

Site Section 18-20S-29E Derringer 18 B2MP Fed #1H

Site Position:
From: Map
Position Uncertainty: 0.0 usft
Northing: 570,126.20 usft
Easting: 606,833.30 usft
Slot Radius: 13-3/16 "
Latitude: 32° 34' 1.749 N
Longitude: 104° 7' 14.626 W
Grid Convergence: 0.11 °

Well Derringer 18 B2MP Fed #1H

Well Position +N/-S 0.0 usft
Position Uncertainty 0.0 usft
Wellhead Elevation: 27.0 usft
Northing: 570,126.20 usft
Easting: 606,833.30 usft
Latitude: 32° 34' 1.749 N
Longitude: 104° 7' 14.626 W
Ground Level: 3,251.0 usft

Wellbore Original Hole

Magnetics	Model Name	Sample Date	Declination (°)	Dip Angle (°)	Field Strength (nT)
	IGRF2015	3/12/2018	7.16	60.28	48,008.38503812

Design Original Hole

Audit Notes:

Version: 1.0
Phase: ACTUAL
Tie On Depth: 0.0

Vertical Section:	Depth From (TVD) (usft)	+N/-S (usft)	+E/-W (usft)	Direction (°)
	0.0	0.0	0.0	248.00

Survey Program Date 4/17/2018

From (usft)	To (usft)	Survey (Wellbore)	Tool Name	Description
100.0	2,874.0	Phoenix Tech Survey (Original Hole)	NSG-CT_WL	Continuous north-seeking gyro on wireline
3,028.0	12,215.0	Survey #2 (Original Hole)		

Survey

Measured Depth (usft)	Inclination (°)	Azimuth (°)	Vertical Depth (usft)	+N/-S (usft)	+E/-W (usft)	Vertical Section (usft)	Dogleg Rate (°/100usft)	Build Rate (°/100usft)	Turn Rate (°/100usft)
0.0	0.00	0.00	0.0	0.0	0.0	0.0	0.00	0.00	0.00
100.0	0.63	233.99	100.0	-0.3	-0.4	0.5	0.63	0.63	0.00
200.0	0.94	281.93	200.0	-0.5	-1.7	1.7	0.70	0.31	47.94
300.0	1.32	274.32	300.0	-0.2	-3.6	3.5	0.41	0.38	-7.61
400.0	2.71	262.26	399.9	-0.5	-7.1	6.8	1.45	1.39	-12.06
500.0	3.27	262.65	499.8	-1.1	-12.3	11.8	0.56	0.56	0.39
600.0	2.64	253.97	599.6	-2.1	-17.3	16.9	0.77	-0.63	-8.68
700.0	2.65	251.92	699.5	-3.5	-21.8	21.5	0.10	0.01	-2.05
800.0	2.56	248.89	799.4	-5.0	-26.0	26.0	0.16	-0.09	-3.03



Microsoft Survey Report



Company:	Mewbourne Oil Company	Local Co-ordinate Reference:	Well Derringer 18 B2MP Fed #1H
Project:	Eddy County, N.M. Nad (83)	TVD Reference:	3251 + 27 @ 3278.0usft (Patterson 560)
Site:	Section 18-20S-29E Derringer 18 B2MP Fed #1H	MD Reference:	3251 + 27 @ 3278.0usft (Patterson 560)
Well:	Derringer 18 B2MP Fed #1H	North Reference:	Grid
Wellbore:	Original Hole	Survey Calculation Method:	Minimum Curvature
Design:	Original Hole	Database:	Stryker_EDM

Measured Depth (usft)	Inclination (°)	Azimuth (°)	Vertical Depth (usft)	+N/-S (usft)	+E/-W (usft)	Vertical Section (usft)	Dogleg Rate (°/100usft)	Build Rate (°/100usft)	Turn Rate (°/100usft)	
900.0	2.65	245.80	899.3	-6.8	-30.2	30.6	0.17	0.09	-3.09	
1,000.0	3.03	242.64	999.2	-8.9	-34.7	35.5	0.41	0.38	-3.16	
1,100.0	2.90	243.69	1,099.1	-11.3	-39.3	40.7	0.14	-0.13	1.05	
1,200.0	2.73	247.35	1,198.9	-13.3	-43.8	45.6	0.25	-0.17	3.66	
1,300.0	2.82	248.27	1,298.8	-15.1	-48.3	50.4	0.10	0.09	0.92	
1,400.0	2.35	249.15	1,398.7	-16.8	-52.5	54.9	0.47	-0.47	0.88	
1,500.0	1.94	243.76	1,498.7	-18.2	-55.9	58.7	0.46	-0.41	-5.39	
1,600.0	1.76	255.48	1,598.6	-19.4	-58.9	61.9	0.42	-0.18	11.72	
1,700.0	1.55	245.67	1,698.6	-20.3	-61.6	64.7	0.35	-0.21	-9.81	
1,800.0	1.08	268.03	1,798.5	-20.9	-63.8	67.0	0.69	-0.47	22.36	
1,900.0	0.43	292.28	1,898.5	-20.8	-65.1	68.1	0.71	-0.65	24.25	
2,000.0	0.97	261.54	1,998.5	-20.8	-66.3	69.2	0.64	0.54	-30.74	
2,100.0	1.77	221.92	2,098.5	-22.1	-68.1	71.4	1.20	0.80	-39.62	
2,200.0	1.44	217.61	2,198.5	-24.2	-69.9	73.9	0.35	-0.33	-4.31	
2,300.0	1.05	197.59	2,298.4	-26.1	-71.0	75.6	0.58	-0.39	-20.02	
2,400.0	0.65	168.13	2,398.4	-27.5	-71.1	76.3	0.58	-0.40	-29.46	
2,500.0	0.25	213.20	2,498.4	-28.2	-71.1	76.5	0.51	-0.40	45.07	
2,600.0	0.23	172.04	2,598.4	-28.6	-71.2	76.8	0.17	-0.02	-41.16	
2,700.0	0.37	97.62	2,698.4	-28.9	-70.9	76.5	0.38	0.14	-74.42	
2,800.0	0.50	289.59	2,798.4	-28.8	-71.0	76.6	0.87	0.13	-168.03	
2,874.0	0.60	88.57	2,872.4	-28.6	-70.9	76.5	1.46	0.14	214.84	
2874' MD Phoenix Tech										
3,028.0	0.70	356.10	3,026.4	-27.7	-70.1	75.4	0.61	0.06	-60.05	
3,122.0	2.50	301.70	3,120.4	-26.0	-71.9	76.4	2.31	1.91	-57.87	
3,217.0	3.10	299.30	3,215.3	-23.7	-75.9	79.3	0.64	0.63	-2.53	
3,311.0	3.60	282.60	3,309.1	-21.8	-81.0	83.3	1.16	0.53	-17.77	
3,406.0	3.90	273.60	3,403.9	-20.9	-87.2	88.7	0.69	0.32	-9.47	
3,500.0	4.00	274.30	3,497.7	-20.5	-93.6	94.5	0.12	0.11	0.74	
3,594.0	4.00	273.10	3,591.4	-20.1	-100.2	100.4	0.09	0.00	-1.28	
3,689.0	4.10	287.60	3,686.2	-18.9	-106.7	106.0	1.08	0.11	15.26	
3,783.0	4.40	293.80	3,779.9	-16.4	-113.2	111.1	0.58	0.32	6.60	
3,878.0	4.40	292.40	3,874.7	-13.5	-119.9	116.3	0.11	0.00	-1.47	
3,972.0	4.40	291.20	3,968.4	-10.9	-126.6	121.5	0.10	0.00	-1.28	
4,067.0	4.30	298.90	4,063.1	-7.8	-133.1	126.4	0.62	-0.11	8.11	
4,161.0	4.30	299.50	4,156.9	-4.4	-139.3	130.8	0.05	0.00	0.64	
4,256.0	4.30	299.50	4,251.6	-0.9	-145.5	135.2	0.00	0.00	0.00	
4,351.0	4.40	298.90	4,346.3	2.6	-151.8	139.7	0.12	0.11	-0.63	
4,445.0	3.90	295.80	4,440.1	5.8	-157.8	144.1	0.58	-0.53	-3.30	
4,540.0	3.80	296.10	4,534.9	8.6	-163.5	148.4	0.11	-0.11	0.32	
4,634.0	3.90	294.20	4,628.6	11.2	-169.3	152.7	0.17	0.11	-2.02	
4,729.0	4.00	293.30	4,723.4	13.9	-175.2	157.3	0.12	0.11	-0.95	
4,823.0	4.00	293.40	4,817.2	16.5	-181.3	161.9	0.01	0.00	0.11	

Company: Mewbourne Oil Company	Local Co-ordinate Reference: Well Derringer 18 B2MP Fed #1H
Project: Eddy County, N.M. Nad (83)	TVD Reference: 3251 + 27 @ 3278.0usft (Patterson 560)
Site: Section 18-20S-29E Derringer 18 B2MP Fed #1H	MD Reference: 3251 + 27 @ 3278.0usft (Patterson 560)
Well: Derringer 18 B2MP Fed #1H	North Reference: Grid
Wellbore: Original Hole	Survey Calculation Method: Minimum Curvature
Design: Original Hole	Database: Stryker_EDM

Survey

Measured Depth (usft)	Inclination (°)	Azimuth (°)	Vertical Depth (usft)	+N/-S (usft)	+E/-W (usft)	Vertical Section (usft)	Dogleg Rate (°/100usft)	Build Rate (°/100usft)	Turn Rate (°/100usft)
4,918.0	4.20	291.20	4,911.9	19.1	-187.5	166.8	0.27	0.21	-2.32
5,013.0	4.20	290.00	5,006.7	21.5	-194.1	171.9	0.09	0.00	-1.26
5,107.0	4.10	291.00	5,100.4	23.9	-200.4	176.9	0.13	-0.11	1.06
5,202.0	4.30	287.60	5,195.2	26.2	-207.0	182.1	0.34	0.21	-3.58
5,296.0	4.30	287.20	5,288.9	28.3	-213.7	187.6	0.03	0.00	-0.43
5,391.0	4.40	288.10	5,383.6	30.5	-220.6	193.1	0.13	0.11	0.95
5,485.0	4.40	297.30	5,477.4	33.2	-227.2	198.2	0.75	0.00	9.79
5,580.0	4.30	283.50	5,572.1	35.7	-233.9	203.5	1.10	-0.11	-14.53
5,675.0	4.10	280.20	5,666.8	37.2	-240.7	209.3	0.33	-0.21	-3.47
5,769.0	4.00	279.20	5,760.6	38.3	-247.3	214.9	0.13	-0.11	-1.06
5,864.0	4.50	289.40	5,855.4	40.1	-254.1	220.5	0.95	0.53	10.74
5,958.0	4.40	289.80	5,949.1	42.5	-260.9	226.0	0.11	-0.11	0.43
6,053.0	3.50	301.20	6,043.8	45.3	-266.8	230.5	1.25	-0.95	12.00
6,147.0	3.10	302.20	6,137.7	48.1	-271.4	233.7	0.43	-0.43	1.06
6,242.0	3.70	286.80	6,232.5	50.3	-276.5	237.6	1.14	0.63	-16.21
6,337.0	3.60	279.40	6,327.3	51.7	-282.4	242.5	0.51	-0.11	-7.79
6,432.0	4.00	285.80	6,422.1	53.1	-288.6	247.7	0.61	0.42	6.74
6,526.0	3.90	284.90	6,515.9	54.8	-294.8	252.8	0.13	-0.11	-0.96
6,621.0	3.90	282.40	6,610.7	56.3	-301.1	258.0	0.18	0.00	-2.63
6,715.0	4.90	292.40	6,704.4	58.6	-307.9	263.6	1.34	1.06	10.64
6,810.0	4.90	292.10	6,799.1	61.6	-315.4	269.4	0.03	0.00	-0.32
6,905.0	5.00	290.30	6,893.7	64.6	-323.1	275.3	0.19	0.11	-1.89
7,000.0	3.10	306.30	6,988.5	67.6	-329.0	279.8	2.31	-2.00	16.84
7,094.0	1.60	335.90	7,082.4	70.3	-331.6	281.1	2.00	-1.60	31.49
7,189.0	1.00	336.20	7,177.4	72.2	-332.5	281.2	0.63	-0.63	0.32
7,241.5	1.06	333.20	7,229.9	73.1	-332.9	281.3	0.15	0.11	-5.72
B.B. Derringer 18 B2MP Fed 1H									
7,278.0	1.10	331.30	7,266.3	73.7	-333.2	281.3	0.15	0.11	-5.20
7,339.0	1.60	59.10	7,327.3	74.6	-332.8	280.6	3.13	0.82	143.93
7,371.0	8.00	71.00	7,359.2	75.6	-330.3	277.9	20.13	20.00	37.19
7,402.0	12.60	69.30	7,389.7	77.5	-325.1	272.4	14.87	14.84	-5.48
7,434.0	15.90	68.90	7,420.7	80.3	-317.7	264.5	10.32	10.31	-1.25
7,465.0	18.60	78.60	7,450.3	82.8	-308.9	255.4	12.70	8.71	31.29
7,497.0	22.70	87.20	7,480.3	84.1	-297.7	244.5	15.91	12.81	26.88
7,529.0	26.20	88.50	7,509.4	84.6	-284.5	232.1	11.07	10.94	4.06
7,560.0	29.20	90.10	7,536.8	84.8	-270.1	218.6	9.97	9.68	5.16
7,592.0	32.00	87.40	7,564.4	85.1	-253.8	203.4	9.75	8.75	-8.44
7,624.0	35.00	86.60	7,591.1	86.1	-236.2	186.7	9.48	9.38	-2.50
7,656.0	38.20	84.50	7,616.7	87.6	-217.1	168.5	10.74	10.00	-6.56
7,687.0	42.70	81.80	7,640.3	90.0	-197.2	149.1	15.57	14.52	-8.71
7,719.0	46.20	80.60	7,663.2	93.4	-175.0	127.3	11.25	10.94	-3.75
7,751.0	49.30	79.70	7,684.7	97.5	-151.7	104.1	9.91	9.69	-2.81
7,782.0	52.20	78.50	7,704.3	102.0	-128.1	80.6	9.82	9.35	-3.87



Microsoft Survey Report



Company:	Mewbourne Oil Company	Local Co-ordinate Reference:	Well Derringer 18 B2MP Fed #1H
Project:	Eddy County, N.M. Nad (83)	TVD Reference:	3251 + 27 @ 3278.0usft (Patterson 560)
Site:	Section 18-20S-29E Derringer 18 B2MP Fed #1H	MD Reference:	3251 + 27 @ 3278.0usft (Patterson 560)
Well:	Derringer 18 B2MP Fed #1H	North Reference:	Grid
Wellbore:	Original Hole	Survey Calculation Method:	Minimum Curvature
Design:	Original Hole	Database:	Stryker_EDM

Survey

Measured Depth (usft)	Inclination (°)	Azimuth (°)	Vertical Depth (usft)	+N/-S (usft)	+E/-W (usft)	Vertical Section (usft)	Dogleg Rate (°/100usft)	Build Rate (°/100usft)	Turn Rate (°/100usft)
7,814.0	55.80	78.10	7,723.1	107.3	-102.8	55.1	11.30	11.25	-1.25
7,837.4	58.59	77.57	7,735.8	111.4	-83.6	35.8	12.09	11.93	-2.28
LP Derringer 18 B2MP Fed 1H									
7,845.0	59.50	77.40	7,739.7	112.8	-77.2	29.3	12.09	11.94	-2.19
7,878.0	63.40	76.80	7,755.5	119.3	-49.0	0.7	11.93	11.82	-1.82
7,909.0	67.20	76.30	7,768.4	125.9	-21.6	-27.1	12.35	12.26	-1.61
7,941.0	71.20	76.20	7,779.8	133.0	7.5	-56.7	12.50	12.50	-0.31
7,972.0	75.20	76.50	7,788.7	140.0	36.3	-86.1	12.94	12.90	0.97
8,004.0	77.90	76.50	7,796.2	147.2	66.6	-116.9	8.44	8.44	0.00
8,036.0	82.80	75.80	7,801.5	154.8	97.2	-148.1	15.46	15.31	-2.19
8,069.0	85.50	77.80	7,804.9	162.3	129.1	-180.5	10.16	8.18	6.06
8,139.0	90.50	82.10	7,807.3	174.5	198.0	-248.9	9.42	7.14	6.14
8,234.0	88.30	87.80	7,808.3	182.8	292.6	-339.8	6.43	-2.32	6.00
8,328.0	88.70	90.30	7,810.8	184.4	386.5	-427.5	2.69	0.43	2.66
8,423.0	88.70	90.40	7,812.9	183.8	481.5	-515.3	0.11	0.00	0.11
8,518.0	88.40	90.20	7,815.3	183.3	576.5	-603.2	0.38	-0.32	-0.21
8,612.0	88.90	89.90	7,817.6	183.2	670.4	-690.3	0.62	0.53	-0.32
8,707.0	89.30	89.50	7,819.1	183.7	765.4	-778.5	0.60	0.42	-0.42
8,802.0	89.50	89.60	7,820.1	184.5	860.4	-866.9	0.24	0.21	0.11
8,896.0	87.20	88.60	7,822.8	186.0	954.4	-954.5	2.67	-2.45	-1.06
8,991.0	87.50	88.10	7,827.2	188.7	1,049.2	-1,043.5	0.61	0.32	-0.53
9,086.0	87.60	87.80	7,831.2	192.1	1,144.1	-1,132.7	0.33	0.11	-0.32
9,180.0	87.70	87.10	7,835.1	196.3	1,237.9	-1,221.3	0.75	0.11	-0.74
9,275.0	88.70	90.00	7,838.1	198.7	1,332.8	-1,310.2	3.23	1.05	3.05
9,369.0	89.40	90.10	7,839.6	198.6	1,426.8	-1,397.3	0.75	0.74	0.11
9,464.0	89.90	89.80	7,840.2	198.7	1,521.8	-1,485.4	0.61	0.53	-0.32
9,559.0	90.20	89.40	7,840.1	199.3	1,616.8	-1,573.7	0.53	0.32	-0.42
9,653.0	90.20	88.50	7,839.8	201.0	1,710.8	-1,661.5	0.96	0.00	-0.96
9,748.0	90.90	88.10	7,838.9	203.9	1,805.7	-1,750.6	0.85	0.74	-0.42
9,843.0	88.60	90.40	7,839.3	205.1	1,900.7	-1,839.1	3.42	-2.42	2.42
9,937.0	88.90	90.70	7,841.3	204.2	1,994.7	-1,925.9	0.45	0.32	0.32
10,032.0	86.80	89.90	7,844.9	203.7	2,089.6	-2,013.8	2.37	-2.21	-0.84
10,126.0	87.30	89.20	7,849.7	204.4	2,183.5	-2,101.1	0.91	0.53	-0.74
10,221.0	87.30	88.60	7,854.2	206.3	2,278.4	-2,189.7	0.63	0.00	-0.63
10,315.0	87.70	88.00	7,858.3	209.1	2,372.2	-2,277.8	0.77	0.43	-0.64
10,410.0	88.90	87.90	7,861.1	212.5	2,467.1	-2,367.1	1.27	1.26	-0.11
10,505.0	88.90	90.10	7,863.0	214.1	2,562.1	-2,455.7	2.32	0.00	2.32
10,600.0	90.20	89.60	7,863.7	214.4	2,657.1	-2,543.9	1.47	1.37	-0.53
10,694.0	89.40	90.70	7,864.0	214.1	2,751.1	-2,631.0	1.45	-0.85	1.17
10,789.0	90.10	90.40	7,864.4	213.2	2,846.1	-2,718.7	0.80	0.74	-0.32
10,884.0	88.60	91.20	7,865.5	211.9	2,941.0	-2,806.3	1.79	-1.58	0.84
10,978.0	89.20	91.10	7,867.3	210.0	3,035.0	-2,892.7	0.65	0.64	-0.11
11,073.0	86.70	91.10	7,870.7	208.2	3,129.9	-2,980.0	2.63	-2.63	0.00



Microsoft Survey Report



Company:	Mewbourne Oil Company	Local Co-ordinate Reference:	Well Derringer 18 B2MP Fed #1H
Project:	Eddy County, N.M. Nad (83)	TVD Reference:	3251 + 27 @ 3278.0usft (Patterson 560)
Site:	Section 18-20S-29E Derringer 18 B2MP Fed #1H	MD Reference:	3251 + 27 @ 3278.0usft (Patterson 560)
Well:	Derringer 18 B2MP Fed #1H	North Reference:	Grid
Wellbore:	Original Hole	Survey Calculation Method:	Minimum Curvature
Design:	Original Hole	Database:	Stryker_EDM

Survey

Measured Depth (usft)	Inclination (°)	Azimuth (°)	Vertical Depth (usft)	+N/-S (usft)	+E/-W (usft)	Vertical Section (usft)	Dogleg Rate (°/100usft)	Build Rate (°/100usft)	Turn Rate (°/100usft)
11,167.0	86.90	91.20	7,876.0	206.3	3,223.8	-3,066.3	0.24	0.21	0.11
11,262.0	86.90	91.00	7,881.1	204.5	3,318.6	-3,153.5	0.21	0.00	-0.21
11,356.0	87.10	90.40	7,886.0	203.3	3,412.5	-3,240.1	0.67	0.21	-0.64
11,451.0	89.90	91.80	7,888.5	201.5	3,507.4	-3,327.5	3.29	2.95	1.47
11,546.0	90.00	91.00	7,888.6	199.2	3,602.4	-3,414.7	0.85	0.11	-0.84
11,640.0	89.20	88.10	7,889.2	199.9	3,696.4	-3,502.1	3.20	-0.85	-3.09
11,735.0	87.60	85.10	7,891.9	205.5	3,791.1	-3,592.1	3.58	-1.68	-3.16
11,828.0	88.50	88.60	7,895.1	210.6	3,883.9	-3,680.0	3.88	0.97	3.76
11,923.0	89.30	89.50	7,896.9	212.2	3,978.9	-3,768.7	1.27	0.84	0.95
12,017.0	90.20	89.40	7,897.3	213.1	4,072.9	-3,856.2	0.96	0.96	-0.11
12,112.0	89.70	87.90	7,897.4	215.4	4,167.9	-3,945.1	1.66	-0.53	-1.58
12,159.0	89.80	87.70	7,897.6	217.2	4,214.8	-3,989.3	0.48	0.21	-0.43
12,215.0	89.80	87.70	7,897.8	219.4	4,270.8	-4,042.0	0.00	0.00	0.00

12215.0' Projected to Bit - PBHL Derringer 18 B2MP Fed 1H

Design Annotations

Measured Depth (usft)	Vertical Depth (usft)	Local Coordinates		Comment
		+N/-S (usft)	+E/-W (usft)	
2,874.0	2,872.4	-28.6	-70.9	2874' MD Phoenix Tech
12,215.0	7,897.8	219.4	4,270.8	12215.0' Projected to Bit

Checked By: _____ Approved By: _____ Date: _____



COMPANY: Mewbourne Oil Company
 WELL: Derringer 18 B2MP Fed #1H
 COUNTY: Eddy County, N.M. Nad (83)
 DATUM: North American Datum 1983
 RIG: Patterson Patterson 560



GRID CORRECTION: To convert a Magnetic Direction to a Grid Direction, Add 7.04°

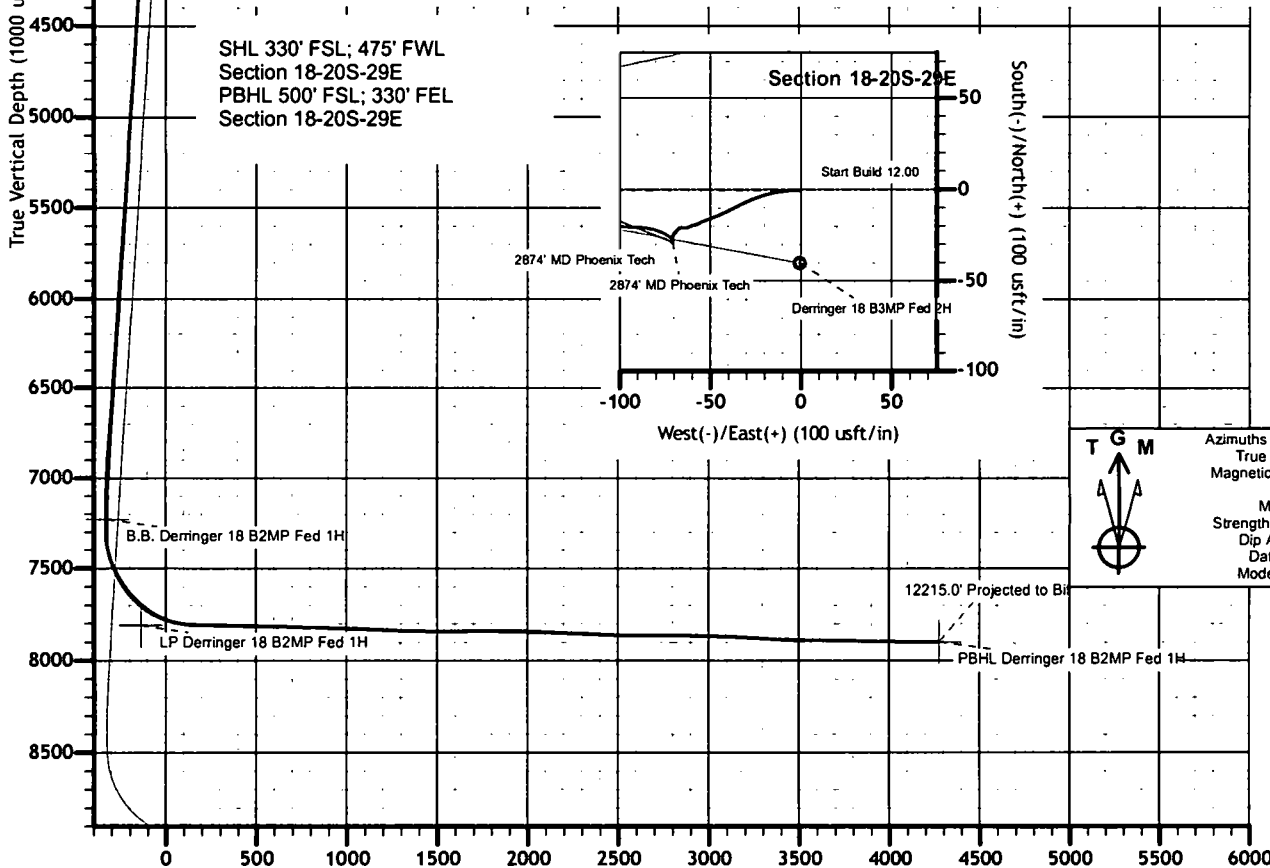
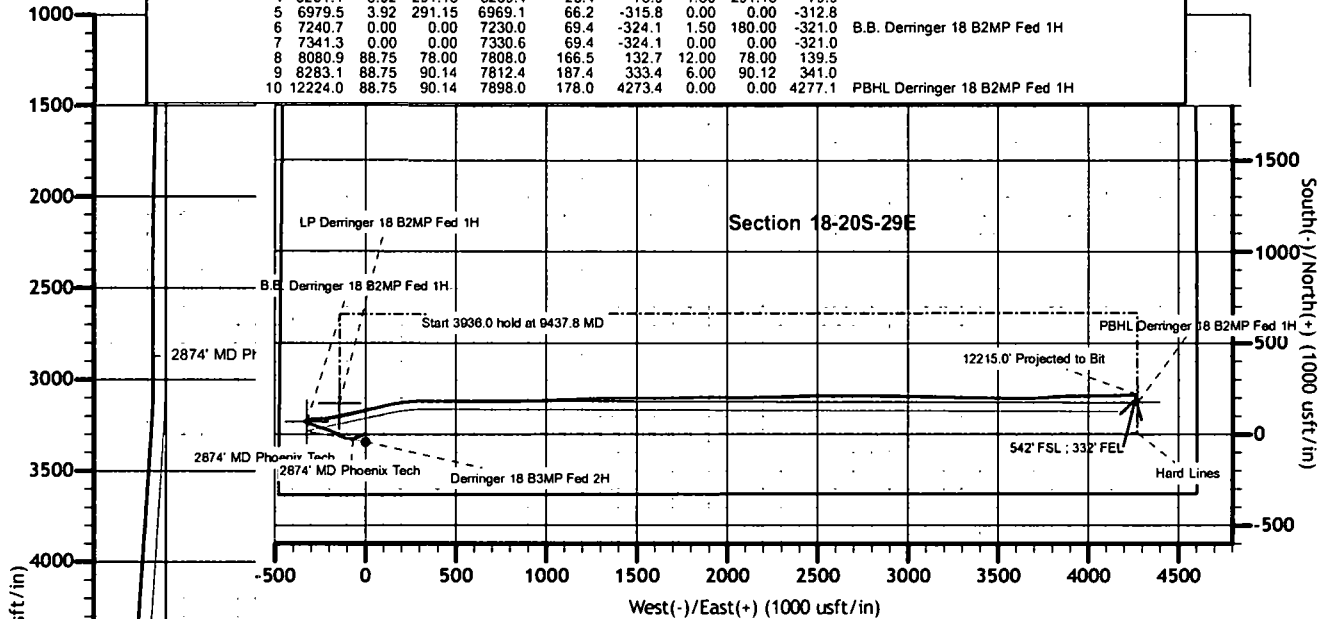
OFFICE: 936.582.7296

GEODETIC ZONE: New Mexico Eastern Zone
 3251 + 27 @ 3278.0usft (Patterson 560)
 GROUND ELEVATION: 3251.0

+N/-S	+E/-W	Northing	Easting	Latitude	Longitude	Spot
0.0	0.0	570126.20	606833.30	32° 34' 1.749 N	104° 7' 14.626 W	

PLAN SECTIONS

Sec	MD	Inc	Azi	TVD	+N/-S	+E/-W	Dleg	TFace	V Sect	Target
1	2874.0	0.60	88.57	2872.4	-28.6	-70.9	0.00	0.00	-72.0	
2	2934.0	0.00	0.00	2932.4	-28.6	-70.6	1.00	180.00	-71.7	
3	3000.0	0.00	0.00	2998.4	-28.6	-70.6	0.00	0.00	-71.7	
4	3261.1	3.92	291.15	3259.4	-25.4	-78.9	1.50	291.15	-79.9	
5	6979.5	3.92	291.15	6969.1	66.2	-315.8	0.00	0.00	-312.8	
6	7240.7	0.00	0.00	7230.0	69.4	-324.1	1.50	180.00	-321.0	B.B. Derringer 18 B2MP Fed 1H
7	7341.3	0.00	0.00	7330.6	69.4	-324.1	0.00	0.00	-321.0	
8	8080.9	88.75	78.00	7808.0	166.5	132.7	12.00	78.00	139.5	
9	8283.1	88.75	90.14	7812.4	187.4	333.4	6.00	90.12	341.0	
10	12224.0	88.75	90.14	7898.0	178.0	4273.4	0.00	0.00	4277.1	PBHL Derringer 18 B2MP Fed 1H



SHL 330' FSL: 475' FWL
 Section 18-20S-29E
 PBHL 500' FSL: 330' FEL
 Section 18-20S-29E

T G M

 Azimuths to Grid North
 True North: -0.11°
 Magnetic North: 7.04°
 Magnetic Field
 Strength: 48008.4snT
 Dip Angle: 60.28°
 Date: 3/12/2018
 Model: IGRF2015

Vertical Section at 87.61° (1000 usft/in)