

District I
1625 N. French Dr., Hobbs, NM 88240
Phone: (575) 393-6161 Fax: (575) 393-0720
District II
811 S. First St., Artesia, NM 88210
Phone: (575) 748-1283 Fax: (575) 748-9720
District III
1000 Rio Brazos Road, Aztec, NM 87410
Phone: (505) 334-6178 Fax: (505) 334-6170
District IV
1220 S. St. Francis Dr., Santa Fe, NM 87505
Phone: (505) 476-3460 Fax: (505) 476-3462

State of New Mexico
Energy, Minerals & Natural Resources Department
OIL CONSERVATION DIVISION
1220 South St. Francis Dr.
Santa Fe, NM 87505

NM OIL CONSERVATION

ARTESIA DISTRICT

Form C-102

Revised August 1, 2011

Submit one copy to appropriate District Office

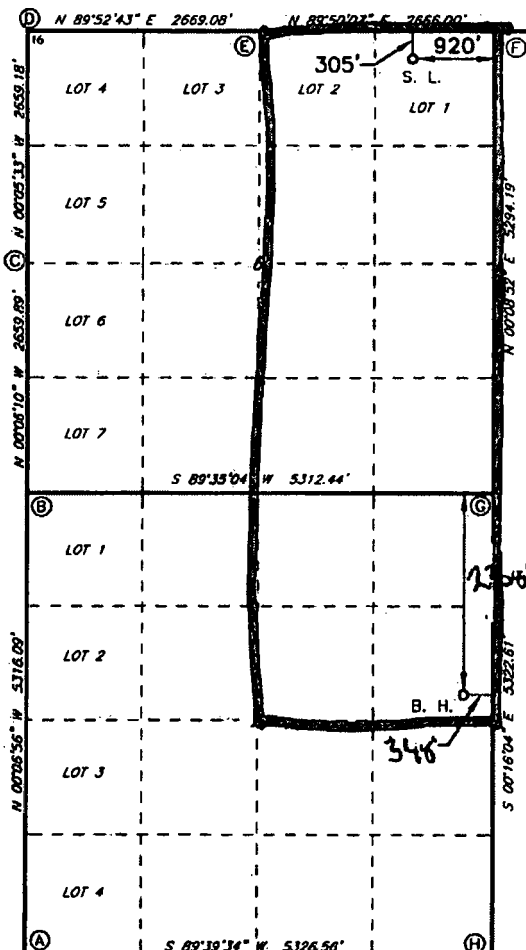
JUN 07 2018

RECEIVED ☐ AMENDED REPORT

WELL LOCATION AND ACREAGE DEDICATION PLAT

¹ API Number 30-015-44466		² Pool Code 98220		³ Pool Name Purple Sage; Wolfcamp (Gas)	
⁴ Property Code 316770		⁵ Property Name MOTLEY 6/7 WOAHE FEE COM			
⁷ OGRID NO. 14744		⁸ Operator Name MEWBOURNE OIL COMPANY			
⁹ Well Number 1H					
⁹ Elevation 3101'					
¹⁰ Surface Location					
UL or lot no. 1	Section 6	Township 24S	Range 28E	Lot Idn	Feet from the 335
		North/South line NORTH		Feet From the 920	East/West line EAST
		County EDDY			
¹¹ Bottom Hole Location If Different From Surface					
UL or lot no. H	Section 7	Township 24S	Range 28E	Lot Idn	Feet from the 2308
		North/South line NORTH		Feet from the 348	East/West line EAST
		County EDDY			
¹² Dedicated Acres 479.88		¹³ Joint or Infill		¹⁴ Consolidation Code	
				¹⁵ Order No.	

No allowable will be assigned to this completion until all interest have been consolidated or a non-standard unit has been approved by the division.



GEODETIC DATA
NAD 83 GRID - NM EAST

SURFACE LOCATION
N 455983.5 - E 606906.9

LAT: 32.2533959° N
LONG: 104.1212258° W

BOTTOM HOLE
N 448686.3 - E 607494.7

LAT: 32.2333336° N
LONG: 104.1193715° W

CORNER DATA
NAD 83 GRID - NM EAST

A: FOUND BRASS CAP "1942"
N 445645.1 - E 602512.0

B: FOUND BRASS CAP "1942"
N 450959.9 - E 602501.3

C: FOUND BRASS CAP "1942"
N 453619.2 - E 602496.6

D: FOUND BRASS CAP "1942"
N 456277.8 - E 602492.3

E: FOUND BRASS CAP "1942"
N 456283.4 - E 605160.7

F: FOUND BRASS CAP "1942"
N 456291.1 - E 607826.1

G: CALCULATED CORNER
N 450998.1 - E 607812.4

H: CALCULATED CORNER
N 445676.9 - E 607837.3

¹⁷ OPERATOR CERTIFICATION

I hereby certify that the information contained herein is true and complete to the best of my knowledge and belief, and that this organization either owns a working interest or unleased mineral interest in the land including the proposed bottom hole location or has a right to drill this well at this location pursuant to a contract with an owner of such a mineral or working interest, or to a voluntary pooling agreement or a compulsory pooling order heretofore entered by the division.

Signature: Jackie Lathan 6/6/18
Printed Name: Jackie Lathan

E-mail Address

¹⁸ SURVEYOR CERTIFICATION

I hereby certify that the well location shown on this plat was plotted from field notes of actual surveys made by me or under my supervision, and that the same is true and correct to the best of my belief.

9-1-2016

Date of Survey

Signature and Seal of Professional Surveyor

19680

Certificate Number

RESTAKE 8-24-17, NAME 10-16-17

RRC - Job No.: LS1708531