

30-015-45382

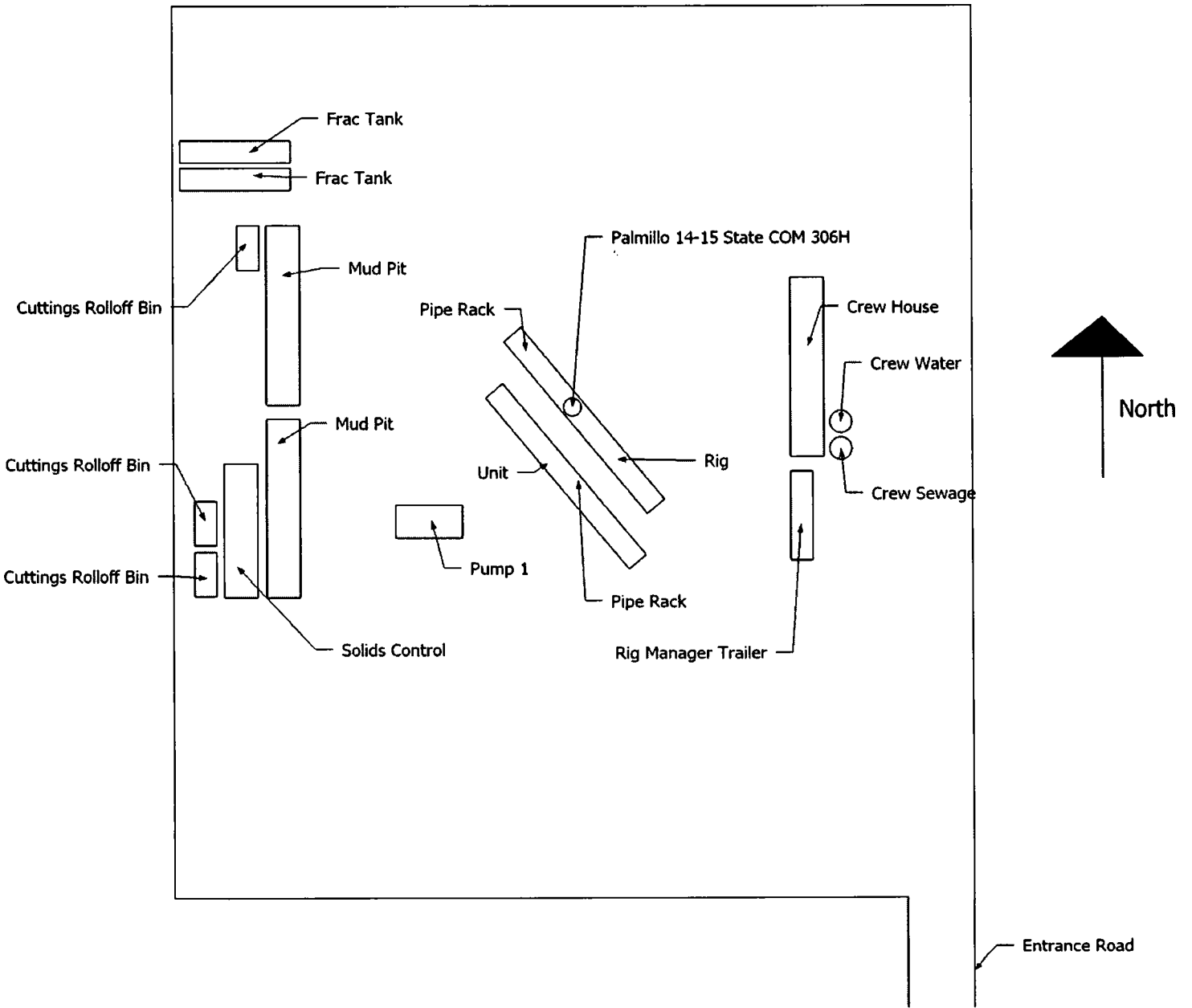
Apache Corp respectfully requests approval for the following changes and additions to the drilling plan:

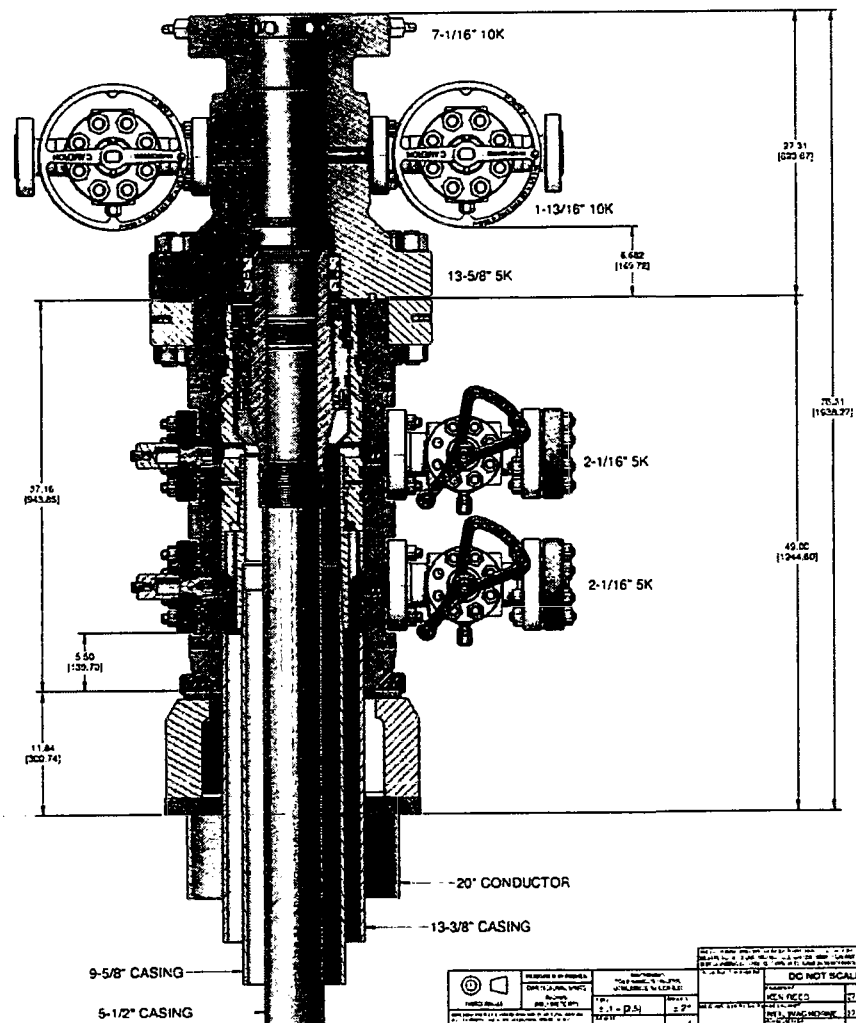
1. Utilize a spudder rig to pre-set surface casing.
2. Description of Operations
 1. Spudder rig will move in their rig to drill the surface hole section and pre-set surface casing on the Palmillo 14-15 State COM 306H.
 - a. After drilling the surface hole section, the rig will run casing and cement following all of the applicable rules and regulations (19.15.16 NMAC Drilling and Production).
 - b. Rig will utilize fresh water based mud to drill 17-1/2" surface hole to TD. Solids control will be handled entirely on a closed loop basis.
 2. The wellhead (page 3) will be installed and tested once the 13-3/8" surface casing is cut off and the WOC time has been reached.
 3. A blind flange with the same pressure rating as the wellhead will be installed to seal the wellbore. Pressure will be monitored with a pressure gauge installed on the wellhead.
 - a. A means for intervention will be maintained while the drilling rig is not over the well.
 4. Spudder rig operations is expected to take 1-2 days on a single well pad.
 5. The NMOCD will be contacted and notified 24 hours prior to commencing spudder rig operations.
 6. Drilling operations will be performed with the drilling rig. At that time an approved BOP stack will be nipped up and tested on the wellhead before drilling operations commences on each well.
 - a. The NMOCD will be contacted / notified 24 hours before the drilling rig moves back on to the pad with the pre-set surface casing.
 7. Apache Corp will have supervision over the rig to ensure compliance with all NMOCD regulations and to oversee operations.
 8. Once the rig is removed, Apache Corp will secure the wellhead area by placing a guard rail around the cellar area.

**NM OIL CONSERVATION
ARTESIA DISTRICT**

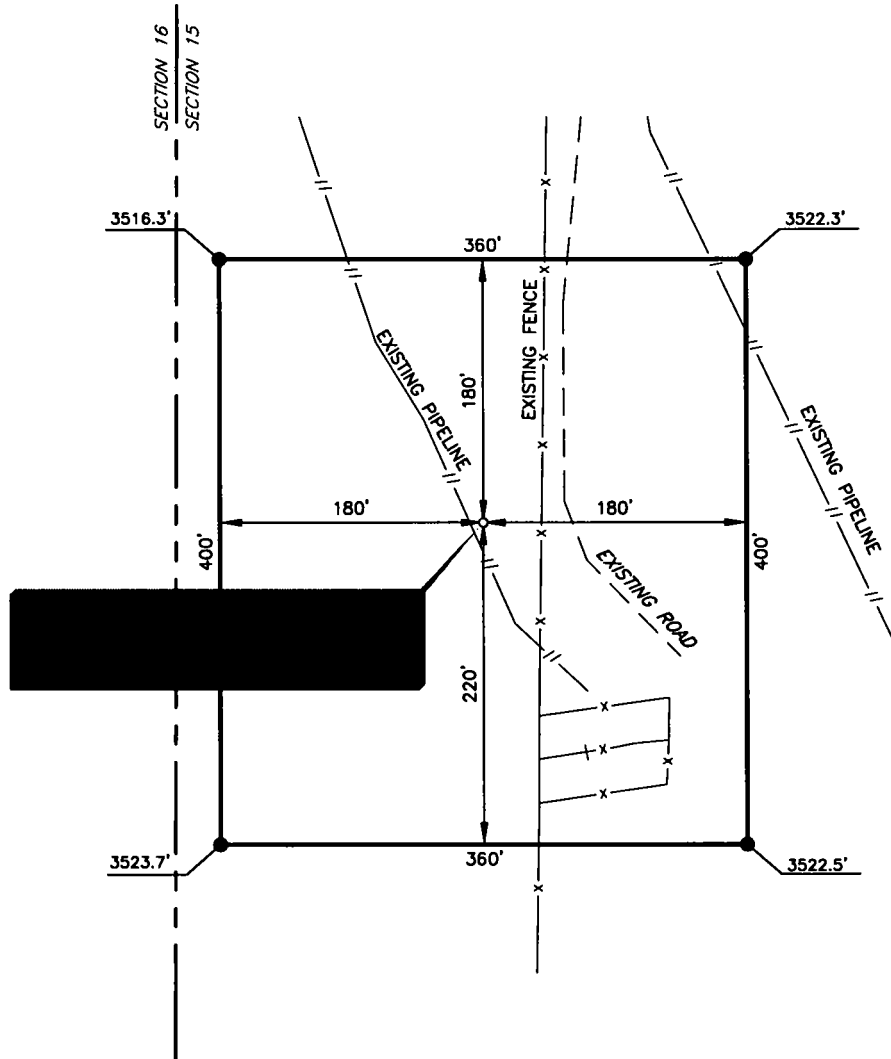
OCT 31 2018

RECEIVED



[illegible]

APACHE CORPORATION
PALMILLO 14-15 STATE COM #306H
(819' FNL & 210' FWL)
SECTION 15, T19S, R28E
N. M. P. M., EDDY COUNTY, NEW MEXICO



DIRECTIONS TO LOCATION

From the intersection of Buckskin Rd. (CR-242) and Millman Rd. (CR-246);
 Go Northwest on Millman Rd. approx. 0.1 miles; Continue onto Hillbilly Rd approx. 1.0 mile;
 Continue onto Millman Rd. approx. 1.7 miles;
 Go right at the 1st cross street to stay on Millman Rd. approx. 0.5 miles;
 Turn left onto lease Rd. approx. 0.5 miles and continue proposed Rd. approx. 0.5 miles;
 Turn right onto a lease Rd. to the North pad.

THIS IS NOT A BOUNDARY SURVEY, APPARENT PROPERTY CORNERS AND
 PROPERTY LINES ARE SHOWN FOR INFORMATION ONLY, BOUNDARY DATA IS
 SHOWN FROM A PREVIOUS SURVEY REFERENCED HEREON.

I, Jeffrey L. Fansler, a N. M. Professional Surveyor, hereby certify
 that I prepared this plat from an actual survey made on the
 ground under my direct supervision, said survey and plat meet
 the Min. Stds. for Land Surveying in the State of N. M. and are
 true and correct to the best of my knowledge and belief.

Jeffrey L. Fansler
 Jeffrey L. Fansler NM PS 10034



SCALE: 1" = 100'
 0 50' 100'
 BEARINGS ARE GRID NAD 83
 NM EAST
 DISTANCES ARE HORIZ. GROUND.

Copyright 2017 - All Rights Reserved

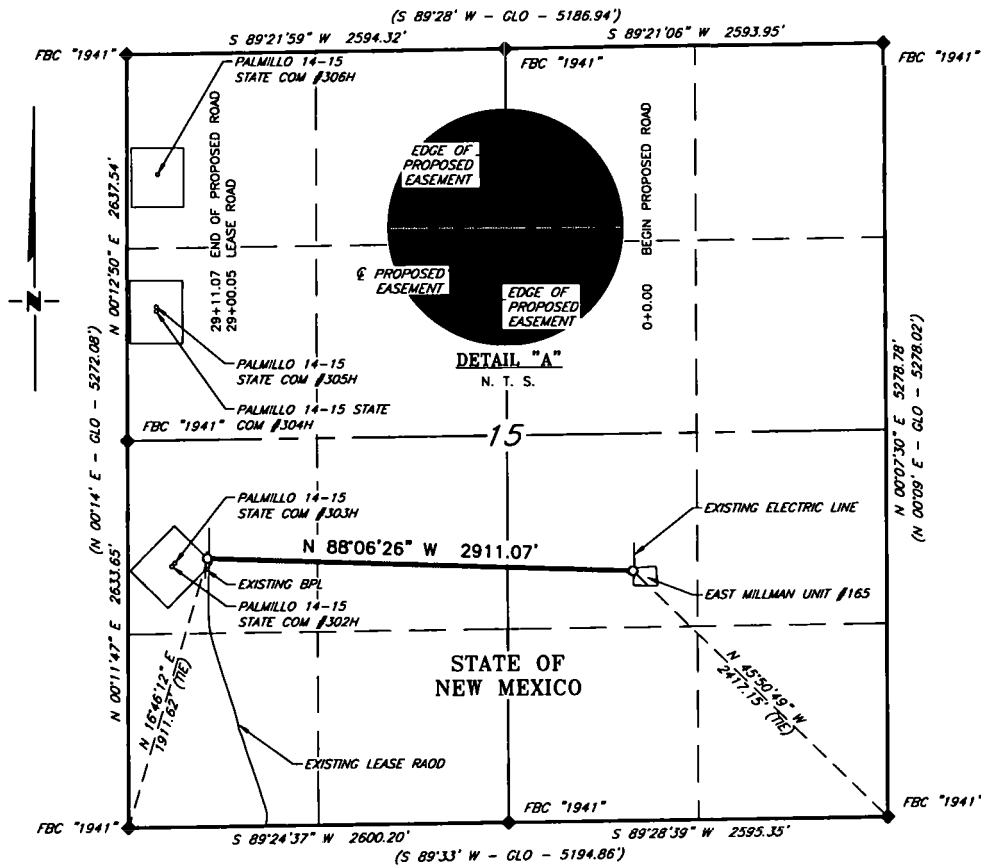
NO.	REVISION	DATE
JOB NO.:	LS18091067	
DWG. NO.:	18091067PAD	

RRC

306 701 S. CECIL ST., HOBBS, NM 88240 (575) 964-8200

SCALE: 1" = 100'
DATE: 09-13-2018
SURVEYED BY: AB/RU
DRAWN BY: JBT
APPROVED BY: JLF
SHEET: 1 OF 1

APACHE CORPORATION
PROPOSED ACCESS ROAD FROM THE EAST MILLMAN UNIT #165
TO THE PALMILLO 14-15 STATE COM #302H & #303H
SECTION 15, T19S, R28E
N. M. P. M., EDDY COUNTY, NEW MEXICO



DESCRIPTION

A strip of land 20 feet wide, being 2,911.07 feet or 176.428 rods in length, lying in Section 15, Township 19 South, Range 28 East, N. M. P. M., Eddy County, New Mexico, being 10 feet left and 10 feet right of the following described survey of a centerline across State of New Mexico land:

BEGINNING at Engr. Sta. 0+00, a point in the Southeast quarter of Section 15, which bears, N 45°50'49" W, 2,417.15 feet from a brass cap, stamped "1941", found for the Southeast corner of Section 15;

Thence, N 88°06'26" W, 2,911.07 feet, to Engr. Sta. 29+11.07, the End of Survey, a point in the Southwest quarter of Section 15, which bears, N 16°46'12" E, 1,911.62 feet from a brass cap, stamped "1941", found for the Southwest corner of Section 15.

Said strip of land contains 1.337 acres, more or less, and is allocated by forties as follows:

NW 1/4 SE 1/4	51.950 Rods	0.394 Acres
NE 1/4 SW 1/4	78.772 Rods	0.597 Acres
NW 1/4 SW 1/4	45.706 Rods	0.346 Acres

SCALE: 1" = 1000'
0 500' 1000'

BEARINGS ARE GRID NAD 83
NM EAST
DISTANCES ARE HORIZ. GROUND.

LEGEND

- () RECORD DATA - GLO
- ◆ FOUND MONUMENT AS NOTED
- PROPOSED ACCESS ROAD

I, Jeffrey L. Fansler, a N. M. Professional Surveyor, hereby certify that I prepared this plat from an actual survey made on the ground under my direct supervision, said survey and plat meet the Min. Stds. for Land Surveying in the State of N. M. and are true and correct to the best of my knowledge and belief.

Jeffrey L. Fansler
Jeffrey L. Fansler NM PS 10034



Copyright 2017 - All Rights Reserved

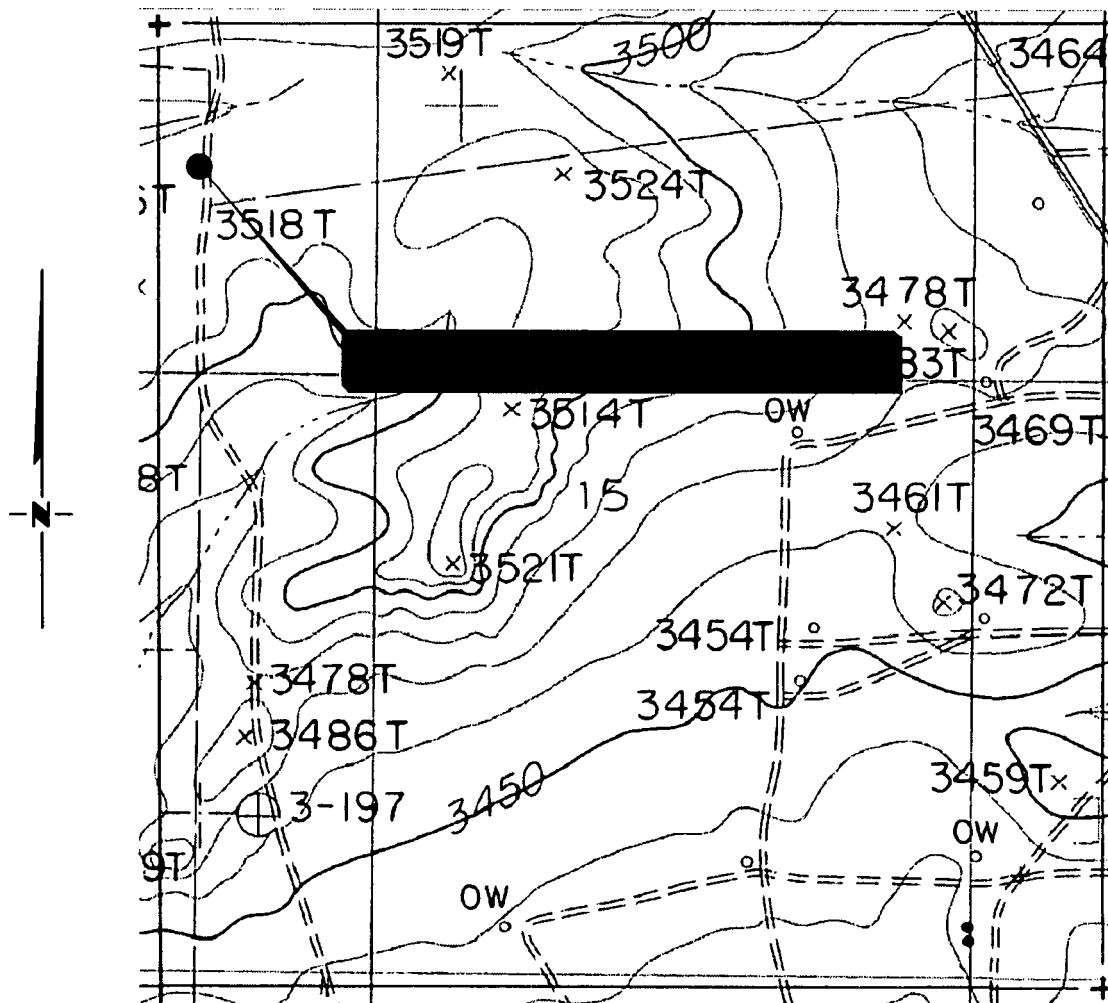
NO.	REVISION	DATE
JOB NO.:	LS18091069	
DWG. NO.:	18091069RD	

RRC

701 S. CECIL ST., HOBBS, NM 88240 (575) 964-8200

SCALE: 1" = 1000'
DATE: 09-24-2018
SURVEYED BY: JF/SV
DRAWN BY: CAR
APPROVED BY: JLF
SHEET: 1 OF 1

LOCATION VERIFICATION MAP



**SECTION 15, TWP. 19 SOUTH, RGE. 28 EAST,
N. M. P. M., EDDY COUNTY, NEW MEXICO**

OPERATOR: Apache Corporation
LEASE: Palmillo 14-15 State Com
WELL NO.: 306H
ELEVATION: 3524'

LOCATION: 819' FNL & 210' FWL
CONTOUR INTERVAL: 10'
USGS TOPO. SOURCE MAP:
Illinois Camp, NM (P. E. 1985)

Copyright 2017 - All Rights Reserved

NO.	REVISION	DATE
JOB NO.:	LS18091067	
DWG. NO.:	18091067LVM	

RRC

306 701 S. CECIL ST., HOBBS, NM 88240 (575) 964-8200

SCALE: 1" = 1000'
DATE: 09-13-2018
SURVEYED BY: AB/RU
DRAWN BY: CAR
APPROVED BY: JLF
SHEET: 1 OF 1

VICINITY MAP

NOT TO SCALE



*SECTION 15, TWP. 19 SOUTH, RGE. 28 EAST,
N. M. P. M., EDDY COUNTY, NEW MEXICO*

OPERATOR: Apache Corporation
LEASE: Palmillo 14-15 State Com
WELL NO.: 306H

LOCATION: 819' FNL & 210' FWL
ELEVATION: 3524'

Copyright 2017 - All Rights Reserved

NO.	REVISION	DATE
JOB NO.: LS18091067		
DWG. NO.: 18091067VM		

RRC



306

701 S. CECIL ST., HOBBS, NM 88240 (575) 964-8200

SCALE: N / A
DATE: 09-13-2018
SURVEYED BY: AB/RU
DRAWN BY: CAR
APPROVED BY: JLF
SHEET: 1 OF 1