

UNITED STATES DEPARTMENT OF THE INTERIOR
BUREAU OF LAND MANAGEMENT
N.M. Oil Cons. Div. Dist. 2
1301 W. Grand Avenue
Artesia, NM 88210

SUBMIT IN TRIPLICATE

FORM APPROVED
OMB NO. 1004-0136
Expires: February 28, 1995

LEASE DESIGNATION AND SERIAL NO.

LC-029392 8

APPLICATION FOR PERMIT TO DRILL OR DEEPEN

1a. TYPE OF WORK

DRILL ☒DEEPEN ☐

b. TYPE OF WELL

OIL WELL ☒GAS WELL ☐OTHER ☐SINGLE ZONE ☒MULTIPLE ZONE ☐

2. NAME OF OPERATOR

RICKS EXPLORATION, INC. (ERICK NELSON 432-683-1920/2122237443)

3. ADDRESS AND TELEPHONE NO.

110 WEST LOUISIANA SUITE 410 MIDLAND, TEXAS 79701

4. LOCATION OF WELL (Report location clearly and in accordance with any State requirements)

At surface 1920' FNL & 660' FWL SECTION 27 T18S-R31E EDDY CO. NEW MEXICO

At proposed prod. zone SAME (E)

14. DISTANCE IN MILES AND DIRECTION FROM NEAREST TOWN OR POST OFFICE

Approximately 10 miles Southeast of Loco Hills New Mexico

13. DISTANCE FROM PROPOSED LOCATION TO NEAREST PROPERTY OR LEASE LINE, FT.

660'

(Also to nearest drilg. unit line, if any)

13. DISTANCE FROM PROPOSED LOCATION TO NEAREST WELL, DRILLING, COMPLETED, OR APPLIED FOR, ON THIS LEASE, FT.

270'

16. NO. OF ACRES IN LEASE

520

17. NO. OF ACRES ASSIGNED TO THIS WELL

40

19. PROPOSED DEPTH

6500'

20. ROTARY OR CABLE TOOLS

ROTARY

21. ELEVATIONS (Show whether DF, RT, GR, etc.)

3632' GR

22. APPROX. DATE WORK WILL START WHEN APPROVED

23.

PROPOSED CASING AND CEMENTING PROGRAM

SIZE OF HOLE	GRADE SIZE OF CASING	WEIGHT PER FOOT	SETTING DEPTH	QUANTITY OF CEMENT
25"	Conductor	NA	40'	Cement to surface with Redi-mix.
12 1/2"	J-55 9 5/8"	40	650' WITNESS	880 Sx. circulate cement
8 3/4"	N-80 5 1/2"	17	6500'	1000 Sx. Est. TOC 3500' FS

1. Drill 25" hole to 40'. Set 40' of 20" conductor pipe cement to surface with Redi-mix.
2. Drill 12 1/2" hole to 650'. Run and set 650' of 9 5/8" 40# J-55 ST&C casing. Cement with 600 Sx. of Class "C" cement + 2% CaCl₂ + 1/2# Flocele/Sx. circulate cement to surface.
3. Drill 8 3/4" hole to 6500'. Run and set 6500' of 5 1/2" 17# N-80 LT&C casing. Cement with 300 Sx. of 50/50 Class "C" POZ cement + 5% Salt, +2% CD-2, + 5#/Sx LCM-1, tail in with 700 Sx. of Class "C" 50/50 POZ + 5% Salt, + .4% FL-52, + 3% SMS. Top of cement to be at least 500' above the uppermost productive interval. Estimate top of cement 3500' from surface.

APPROVAL SUBJECT TO
GENERAL REQUIREMENTS
AND SPECIAL STIPULATIONS
ATTACHED

CAPITAN CONTROLLED WATER BASIN

IN ABOVE SPACE DESCRIBE PROPOSED PROGRAM: If proposal is to deepen, give data on present productive zone and proposed new productive zone. If proposal is to drill or deepen directionally, give pertinent data on subsurface locations and measured and true vertical depths. Give blowout preventer program, if any.

24.

SIGNED

Joe T. Larica

TITLE Agent

DATE 05/23/03

(This space for Federal or State office use)

PERMIT NO.

APPROVAL DATE

Application approval does not warrant or certify that the applicant holds legal or equitable title to those rights in the subject lease which would entitle the applicant to conduct operations thereon.
CONDITIONS OF APPROVAL, IF ANY:

/s/ Joe G. Lara

ACTING

FIELD MANAGER

APPROVED BY

TITLE

DATE

12 8 JUL 2003

*See Instructions On Reverse Side

APPROVAL FOR 1 YEAR

Title 18 U.S.C. Section 1001, makes it a crime for any person knowingly and willfully to make to any department or agency of the United States any false, fictitious or fraudulent statements or representations as to any matter within its jurisdiction.

DISTRICT I
1825 N. French Dr., Hobbs, NM 88240

DISTRICT II
811 South First, Artesia, NM 88210

DISTRICT III
1000 Rio Brazos Rd., Aztec, NM 87410

DISTRICT IV
2040 South Pacheco, Santa Fe, NM 87505

State of New Mexico
Energy, Minerals and Natural Resources Department

Form C-102
Revised March 17, 1999

Submit to Appropriate District Office
State Lease - 4 Copies
Fee Lease - 3 Copies

OIL CONSERVATION DIVISION

2040 South Pacheco
Santa Fe, New Mexico 87505

☐ AMENDED REPORT

WELL LOCATION AND ACREAGE DEDICATION PLAT

API Number	Pool Code	Pool Name
	56410	SHUGART - DELAWARE
Property Code	Property Name	Well Number
	PRINCIPLE FEDERAL	4
OGRID No.	Operator Name	Elevation
168489	RICKS EXPLORATION INC.	3632'

Surface Location

UL or lot No.	Section	Township	Range	Lot Idn	Feet from the	North/South line	Feet from the	East/West line	County
E	27	18 S	31 E		1920	NORTH	660	WEST	EDDY

Bottom Hole Location If Different From Surface

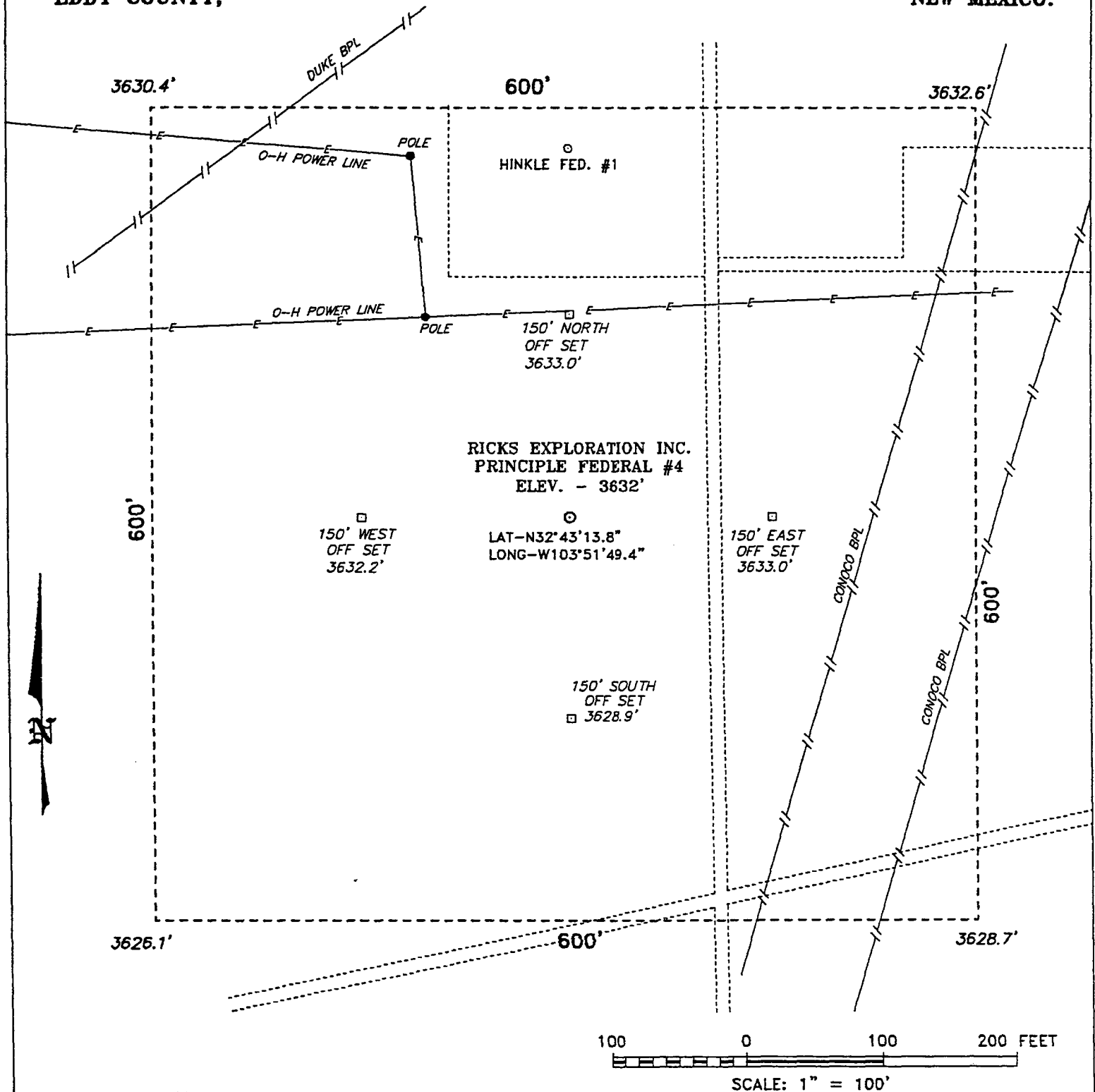
UL or lot No.	Section	Township	Range	Lot Idn	Feet from the	North/South line	Feet from the	East/West line	County

Dedicated Acres	Joint or Infill	Consolidation Code	Order No.
40			

NO ALLOWABLE WILL BE ASSIGNED TO THIS COMPLETION UNTIL ALL INTERESTS HAVE BEEN CONSOLIDATED
OR A NON-STANDARD UNIT HAS BEEN APPROVED BY THE DIVISION

	<p>EXHIBIT "A"</p>		<p>OPERATOR CERTIFICATION</p> <p>I hereby certify the the information contained herein is true and complete to the best of my knowledge and belief.</p> <p><i>Joe T. Janica</i> Signature Joe T. Janica Printed Name Agent Title 05/23/03 Date</p>
	<p>SURVEYOR CERTIFICATION</p> <p>I hereby certify that the well location shown on this plat was plotted from field notes of actual surveys made by me or under my supervision and that the same is true and correct to the best of my belief.</p> <p>MAY 21, 2003 Date Surveyed Signature & Seal of Professional Surveyor Certificate No. 33024 7977</p>		
	<p>BASIN SURVEYS</p>		
	<p></p>		

SECTION 27, TOWNSHIP 18 SOUTH, RANGE 31 EAST, N.M.P.M.,
EDDY COUNTY, NEW MEXICO.



DIRECTIONS TO LOCATION:

FROM THE JUNCTION OF US HWY 82 AND CO. RD. 222, GO SOUTH ON CO. RD. 222 FOR 6.5 MILES TO A LEASE ROAD; THENCE EAST ON LEASE ROAD FOR 1.3 MILES TO A LEASE ROAD INTERSECTION LOCATED ON THE PROPOSED WELL PAD.

RICKS EXPLORATION INC.	
REF: PRINCIPLE FEDERAL No. 4 / Well Pad Topo	
THE PRINCIPLE FEDERAL No. 4 LOCATED 1920' FROM THE NORTH LINE AND 660' FROM THE WEST LINE OF SECTION 27, TOWNSHIP 18 SOUTH, RANGE 31 EAST, N.M.P.M., EDDY COUNTY, NEW MEXICO.	

BASIN SURVEYS P.O. BOX 1786 - HOBBS, NEW MEXICO

W.O. Number: 3302 Drawn By: K. GOAD

Date: 05-22-2003 Disk: KJG CD#4 - 3302A.DWG

Survey Date: 05-21-2003

Sheet 1 of 1 Sheets

APPLICATION TO DRILL

RICKS EXPLORATION, INC.
PRINCIPLE FEDERAL # 4
UNIT "E" SECTION 27
T18S-R31E EDDY CO. NM

In response to questions asked under Section II of Bulletin NTL-6 the following information on the above well is provided for your consideration.

1. Location of well: 1920' FNL & 660' FWL SECTION 27 T18S-R31E EDDY CO. NM

2. Ground Elevation above Sea Level: 3632' GR.

3. Geological age of surface formation: Quaternary

4. Drilling tools and associated equipment: Conventional rotary drilling rig using drilling mud as a circulating medium to remove solids from hole.

5. Proposed drilling depth: 6500'

6. Estimated tops of geological markers:

Rustler Anhydrite	600'	Bell Canyon	4390'
Castile	2310'	Cherry Canyon	4880'
Delaware	4320'	Brushy Canyon	5900'

7. Possible mineral bearing formations:

Delaware	Oil
Brushy Canyon	Oil

8. Casing Program:

Hole Size	Interval	OD of Casing	Weight	Thread	Collar	Grade
25"	0-40	20"	NA	NA	NA	Conductor
12½"	0-650'	9 5/8"	40	8-R	ST&C	J-55
8 3/4"	0-6500'	5½"	17	8-R	LT&C	N-80

APPLICATION TO DRILL

RICKS EXPLORATION, INC.
PRINCIPLE FEDERAL # 4
UNIT "E" SECTION 27
T18S-R31E EDDY CO. NM

9. CASING CEMENTING & SETTING DEPTHS:

25"	Conductor	Set 40' of 20" conductor pipe and cement to surface with Redi-mix.
12½"	Surface	Set 650' of 9 5/8" 40# J-55 ST&C casing. Cement with 600 Sx. of Class "C" cement + 2% CaCl, + ½# Flocele/Sx. Circulate cement to surface.
8 3/4"	Production	Run and set 6500' of 5½" 17# N-80 LT&C casing. Cement with 300 Sx. of Class "C" 50/50 POZ cement + 5% Salt, + 2% CD-2, + 5# LCM-1, tail in with 700 Sx. of 50/50 POZ cement + 5% Salt, + .4% FL-52, + 3% SMS. Top of cement to be at least 500' above uppermost pay interval, estimate top of cement 3500' from surface.

10. PRESSURE CONTROL EQUIPMENT: Exhibit "E" shows a 900 Series 3000 PSI working pressure B.O.P. consisting of an annular bag type preventor, middle blind rams and bottom pipe rams. The B.O.P. will be nipped up on the 9 5/8" casing and tested to API specifications. The B.O.P. will be operated at least once in each 24 hour period and the blind rams will be operated when drill pipe is out of hole on trips. Full opening stabbing valve and upper kelly cock will be utilized. Exhibit "E-1" shows a hydraulically operated closing unit and a 2" 3000 PSI choke manifold with dual adjustable chokes. No abnormal pressures or temperatures are expected.

11. PROPOSED MUD CIRCULATING SYSTEM:

DEPTH	MUD WT.	VISC.	FLUID LOSS	TYPE MUD SYSTEM
40-650'	8.4-8.7	29-34	NC	Fresh water spud mud add paper to control seepage.
650-6500'	9.9-10.2	29-38	*	Brine water use high viscosity sweeps to clean Hole.

* If water loss control is needed to log well, run casing or run DST's use a Polymer system. Water loss control may be desired while drilling through the pay interval.

Sufficient mud materials will be kept on location at all times in order to combat lost circulation, or unexpected kicks. In order to run DST's, open hole logs, and casing viscosity and/or water loss may have to be adjusted to meet these needs.

APPLICATION TO DRILL

RICKS EXPLORATION, INC.
PRINCIPLE FEDERAL # 4
UNIT "E" SECTION 27
T18S-R31E EDDY CO. NM

12. LOGGING, CORING, AND TESTING PROGRAM:

- A. Open hole logs: Dual Laterolog, SNP, LDT, Gamma Ray, Caliper from TD back to 9 5/8" casing shoe.
- B. Cased hole logs: Run Gamma Ray, Neutron logs from 9 5/8" casing shoe to surface.
- C. Mud logger may be placed on hole at the request of the Geologist.
- D. No cores or DST's are planned at this time.

13. POTENTIAL HAZARDS:

No abnormal pressures or temperatures are expected. There is no known presence of H²S in this area. If H²S is encountered the operator will comply with the provisions of Onshore Oil and Gas Order No. 6. No lost circulation is expected to occur. All personnel will be familiar with all aspects of safe operation of equipment being used to drill this well. Estimated BHP 3500 PSI, and Estimated BHT 160°.

14. ANTICIPATED STARTING DATE AND DURATION OF OPERATION:

Road and location construction will begin after the BLM has approved the APD. Anticipated spud date will be as soon after BLM approval and as soon as a rig will be available. Move in operation and drilling is expected to take 18 days. If production casing is run then an additional 30 days will be needed to complete well and construct surface facilities and/or lay flowlines in order to place well on production.

15. OTHER FACETS OF OPERATIONS:

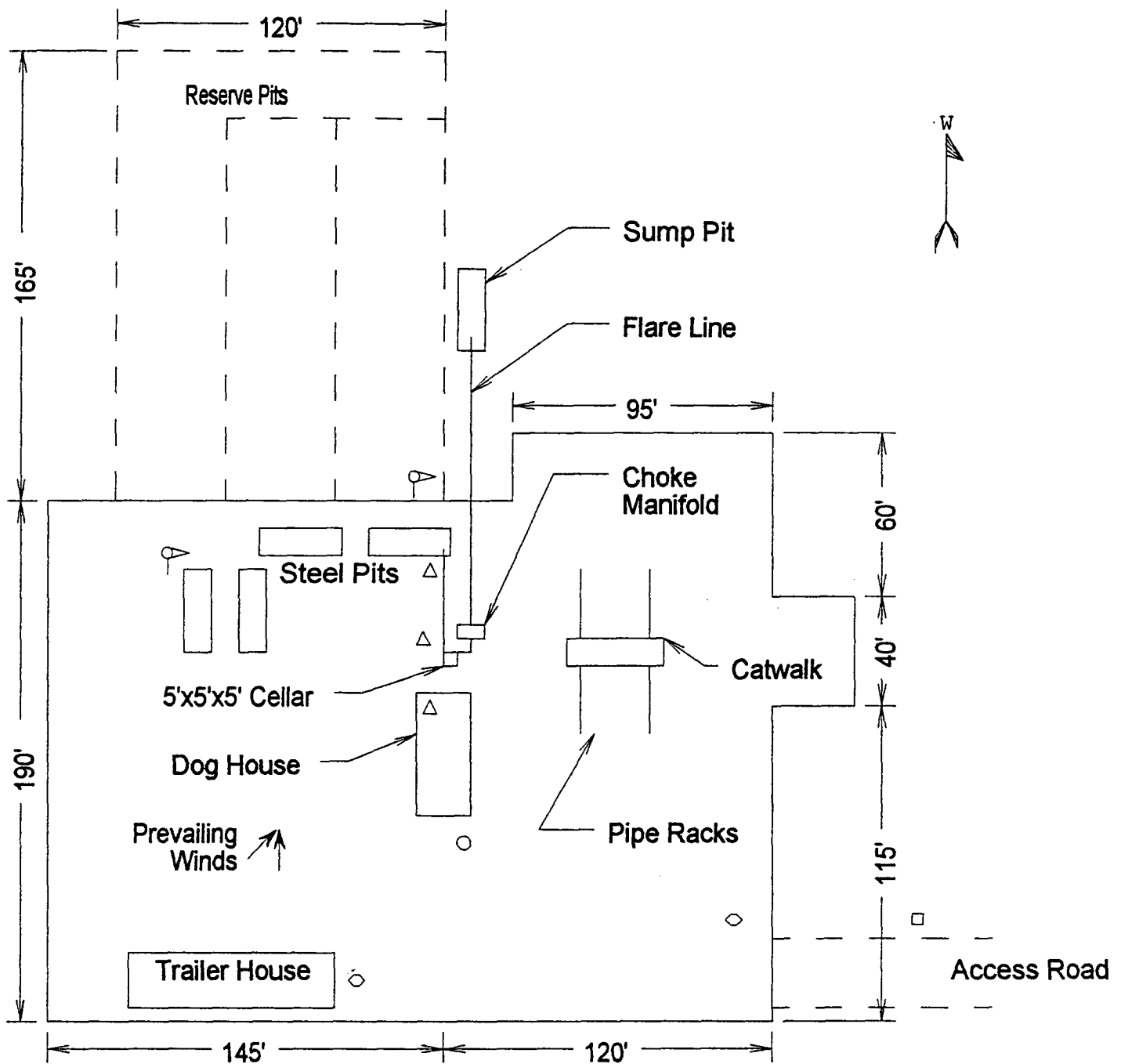
After running casing, cased hole Gamma Ray, Neutron Collar logs will be run from TD back to all possible productive zones. The Delaware formation will be perforated and stimulated in order to establish production. The well will be swab tested and potentialized as an oil well.

HYDROGEN SULFIDE DRILLING OPERATIONS PLAN

1. All Company and Contract personnel admitted on location must be trained by a qualified H₂S safety instructor to the following:
 - A. Characteristics of H₂S
 - B. Physical effects and hazards
 - C. Proper use of safety equipment and life support systems.
 - D. Principle and operation of H₂S detectors, warning system and briefing areas.
 - E. Evacuation procedure, routes and first aid.
 - F. Proper use of 30 minute pressure demand air pack.
2. H₂S Detection and Alarm Systems
 - A. H₂S detectors and audio alarm system to be located at bell nipple, end of blooie line (mud pit) and on derrick floor or doghouse.
3. Windsock and/or wind streamers
 - A. Windsock at mudpit area should be high enough to be visible.
 - B. Windsock at briefing area should be high enough to be visible.
 - C. There should be a windsock at entrance to location.
4. Condition Flags and Signs
 - A. Warning sign on access road to location.
 - B. Flags to be displayed on sign at entrance to location. Green flag, normal safe condition. Yellow flag indicates potential pressure and danger. Red flag, danger, H₂S present in dangerous concentration. Only emergency personnel admitted to location.
5. Well control equipment
 - A. See exhibit "E"
6. Communication
 - A. While working under masks chalkboards will be used for communication.
 - B. Hand signals will be used where chalk board is inappropriate.
 - C. Two way radio will be used to communicate off location in case of emergency help is required. In most cases cellular telephoned will be available at most drilling foreman's trailer or living quarters.
7. Drillstem Testing
 - A. Exhausts will be watered.
 - B. Flare line will be equipped with an electric ignitor or a propane pilot light in case gas reaches the surface.
 - C. If location is near any dwelling a closed D.S.T. will be performed.

HYDROGEN SULFIDE DRILLING OPERATIONS PLAN

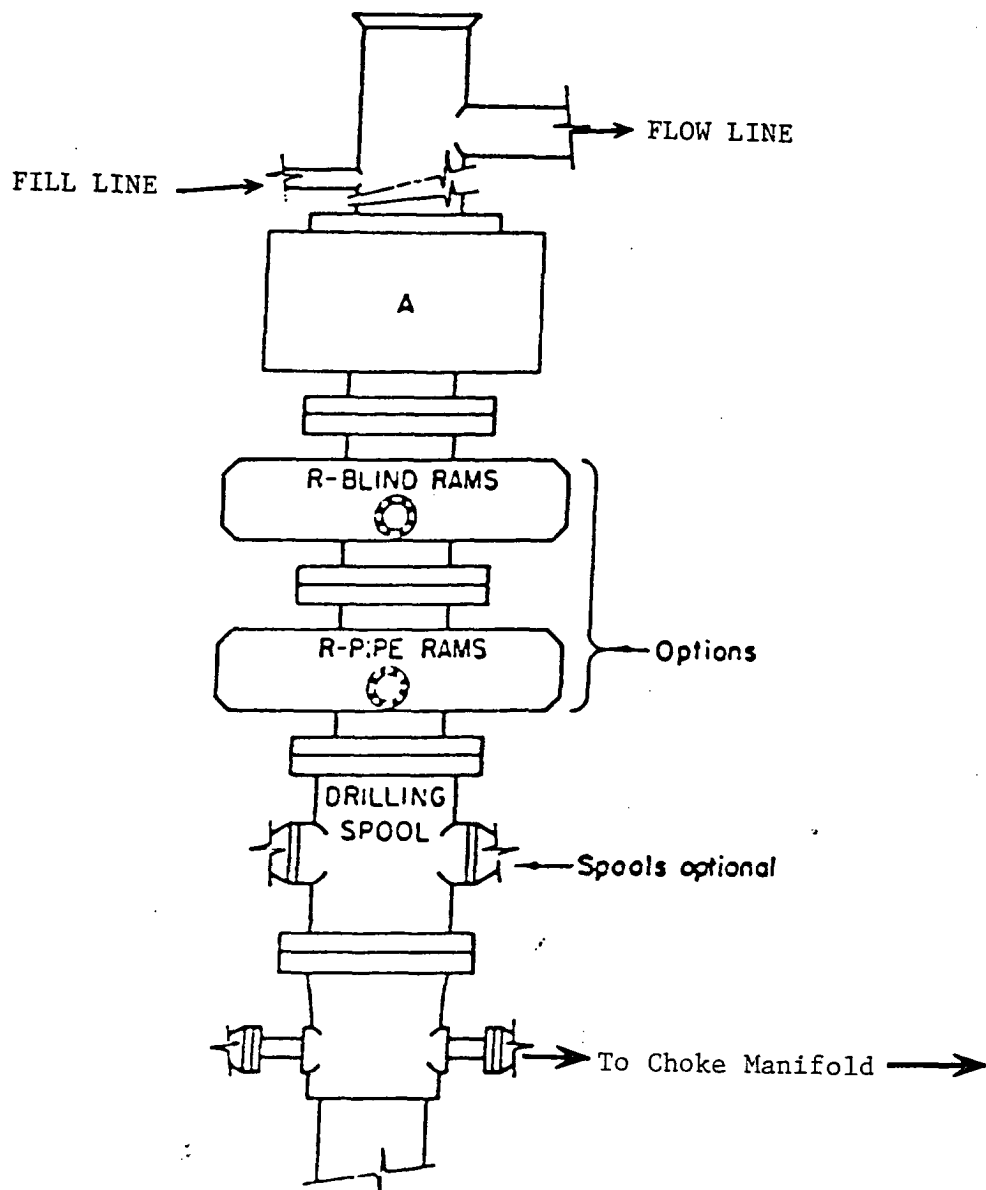
8. Drilling contractor supervisor will be required to be familiar with the effects H_2S has on tubular goods and other mechanical equipment.
9. If H_2S is encountered, mud system will be altered if necessary to maintain control of formation. A mud gas separator will be brought into service along with H_2S scavengers if necessary.



- ⚓ Wind Direction Indicators
(wind sock or streamers)
- △ H2S Monitors
(alarms at bell nipple and shale shaker)
- ◇ Briefing Areas
- Remote BOP Closing Unit
- Sign and Condition Flags

EXHIBIT "D"
RIG LAY OUT PLAT

RICKS EXPLORATION, INC.
PRINCIPLE FEDERAL # 4
UNIT "E" SECTION 27
T18S-R31E EDDY CO. NM

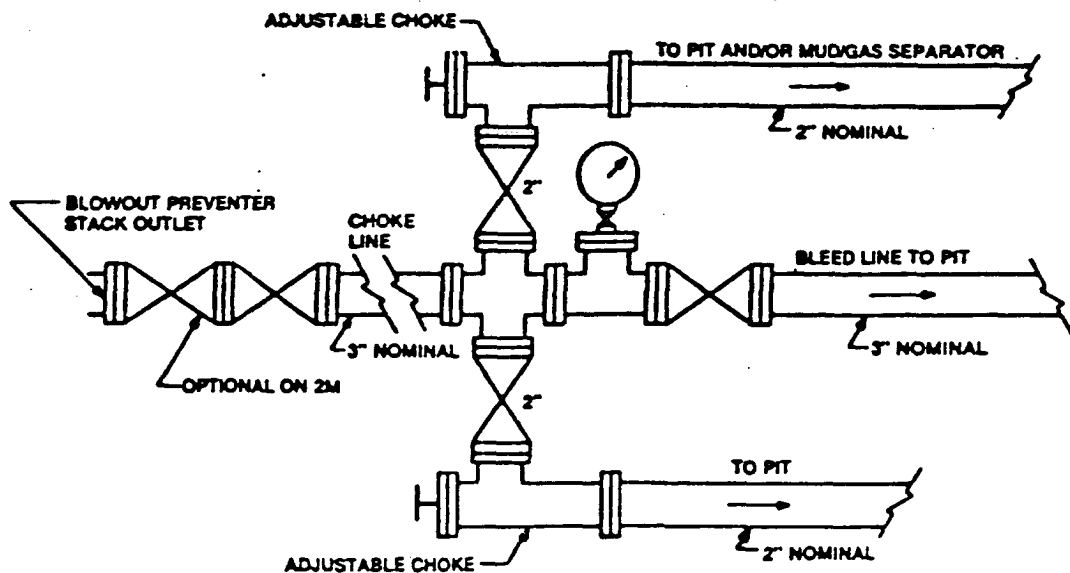


ARRANGEMENT SRRA

900 Series
3000 PSI WP

EXHIBIT "E"
SKETCH OF B.O.P. TO BE USED ON

RICKS EXPLORATION, INC.
PRINCIPLE FEDERAL # 4
UNIT "E" SECTION 27
T18S-R31E EDDY CO. NM



Typical choke manifold assembly for 3M WP system

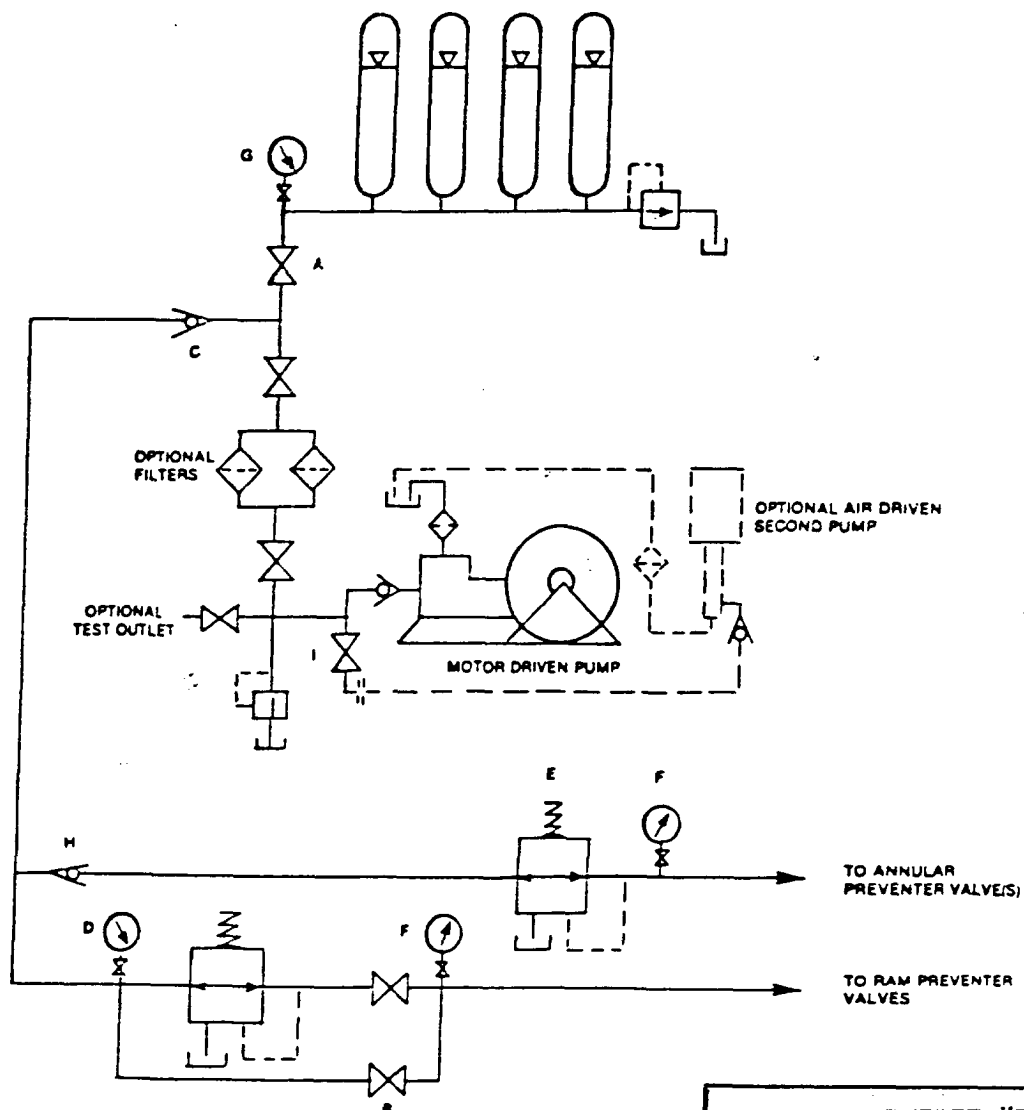


EXHIBIT "E-1"
CHOKE MANIFOLD & CLOSING UNIT

RICKS EXPLORATION, INC.
PRINCIPLE FEDERAL # 4
UNIT "E" SECTION 27
T18S-R31E EDDY CO. NM