

5. Lease Serial No.
NMNM59386

28a. Production - Interval B								
Date First Produced	Test Date	Hours Tested	Test Production →	Oil BBL	Gas MCF	Water BBL	Oil Gravity Corr. API	Gas Gravity
Choke Size	Tbg. Press. Flwg. SI	Csg. Press.	24 Hr. Rate →	Oil BBL	Gas MCF	Water BBL	Gas:Oil Ratio	Well Status

NOV 17 2018
Winch Negrete
 BUREAU OF LAND MANAGEMENT

Reclamation Due: 12/6/2018

28b. Production - Interval C

Date First Produced	Test Date	Hours Tested	Test Production →	Oil BBL	Gas MCF	Water BBL	Oil Gravity Corr. API	Gas Gravity	Production Method
Choke Size	Tbg. Press. Flwg. SI	Csg. Press.	24 Hr. Rate →	Oil BBL	Gas MCF	Water BBL	Gas:Oil Ratio	Well Status	

28c. Production - Interval D

Date First Produced	Test Date	Hours Tested	Test Production →	Oil BBL	Gas MCF	Water BBL	Oil Gravity Corr. API	Gas Gravity	Production Method
Choke Size	Tbg. Press. Flwg. SI	Csg. Press.	24 Hr. Rate →	Oil BBL	Gas MCF	Water BBL	Gas:Oil Ratio	Well Status	

29. Disposition of Gas(Sold, used for fuel, vented, etc.)
SOLD

30. Summary of Porous Zones (Include Aquifers):

Show all important zones of porosity and contents thereof: Cored intervals and all drill-stem tests, including depth interval tested, cushion used, time tool open, flowing and shut-in pressures and recoveries.

31. Formation (Log) Markers

Formation	Top	Bottom	Descriptions, Contents, etc.	Name	Top
					Meas. Depth
BELL CANYON	3385	4301	OIL, GAS, WATER	RUSTLER	492
CHERRY CANYON	4302	5661	OIL, GAS, WATER	SALADO	1013
BRUSHY CANYON	5662	7199	OIL, GAS, WATER	CASTILE	1865
BONE SPRING	7200	8227	OIL, GAS, WATER	DELAWARE	3350
BONE SPRING 1ST	8228	9101	OIL, GAS, WATER	BELL CANYON	3385
BONE SPRING 2ND	9102	9189	OIL, GAS, WATER	CHERRY CANYON	4302
				BRUSHY CANYON	5662
				BONE SPRING	7200

32. Additional remarks (include plugging procedure):

52. FORMATION (LOG) MARKERS CONTD.

1ST BONE SPRINGS 8228'M
2ND BONE SPRINGS 9102'M

Logs were mailed 8/30/18.

33. Circle enclosed attachments:

- | | | | |
|---|--------------------|---------------|-----------------------|
| 1. Electrical/Mechanical Logs (1 full set req'd.) | 2. Geologic Report | 3. DST Report | 4. Directional Survey |
| 5. Sundry Notice for plugging and cement verification | 6. Core Analysis | 7. Other: | |

34. I hereby certify that the foregoing and attached information is complete and correct as determined from all available records (see attached instructions):

Electronic Submission #433264 Verified by the BLM Well Information System.
For OXY USA INCORPORATED, sent to the Carlsbad
Committed to AFMSS for processing by DUNCAN WHITLOCK on 09/06/2018 (18DW0213SE)

Name (please print) DAVID STEWART

Title REGULATORY ADVISOR

Signature (Electronic Submission)

Date 08/29/2018

Title 18 U.S.C. Section 1001 and Title 43 U.S.C. Section 1212, make it a crime for any person knowingly and willfully to make to any department or agency of the United States any false, fictitious or fraudulent statements or representations as to any matter within its jurisdiction.

**** REVISED ** REVISED ** REVISED ** REVISED ** REVISED ** REVISED ** REVISED ****

Additional data for transaction #433264 that would not fit on the form

32. Additional remarks, continued

Log Header, Directional Survey, As-Drilled Amended C-102 plat & WBD are attached.

District I
1023 N. French Dr., Hobbs, NM 88240
Phone: (575) 393-4161 Fax: (575) 393-0720
District II
811 S. First St., Artesia, NM 88210
Phone: (575) 748-1283 Fax: (575) 748-0720
District III
1000 Rio Arriba Road, Aztec, NM 87410
Phone: (505) 334-6178 Fax: (505) 334-6170
District IV
1220 S. St. Francis Dr., Santa Fe, NM 87503
Phone: (505) 476-3460 Fax: (505) 476-3462

State of New Mexico
Energy, Minerals & Natural Resources Department
OIL CONSERVATION DIVISION
1220 South St. Francis Dr.
Santa Fe, NM 87505

Form C-102
Revised August 1, 2011
Submit one copy to appropriate
District Office

☒ AMENDED REPORT
(As-Drilled)

WELL LOCATION AND ACREAGE DEDICATION PLAT

API Number 30-015-44636	Pool Code 96473	Pool Name Pierce Crossing Bone Spring, East
Property Code 320631	Property Name CORRAL CANYON "36-25" FEDERAL COM	Well Number 26H
OGRID No. 16696	Operator Name OXY USA INC.	Elevation 3136.0'

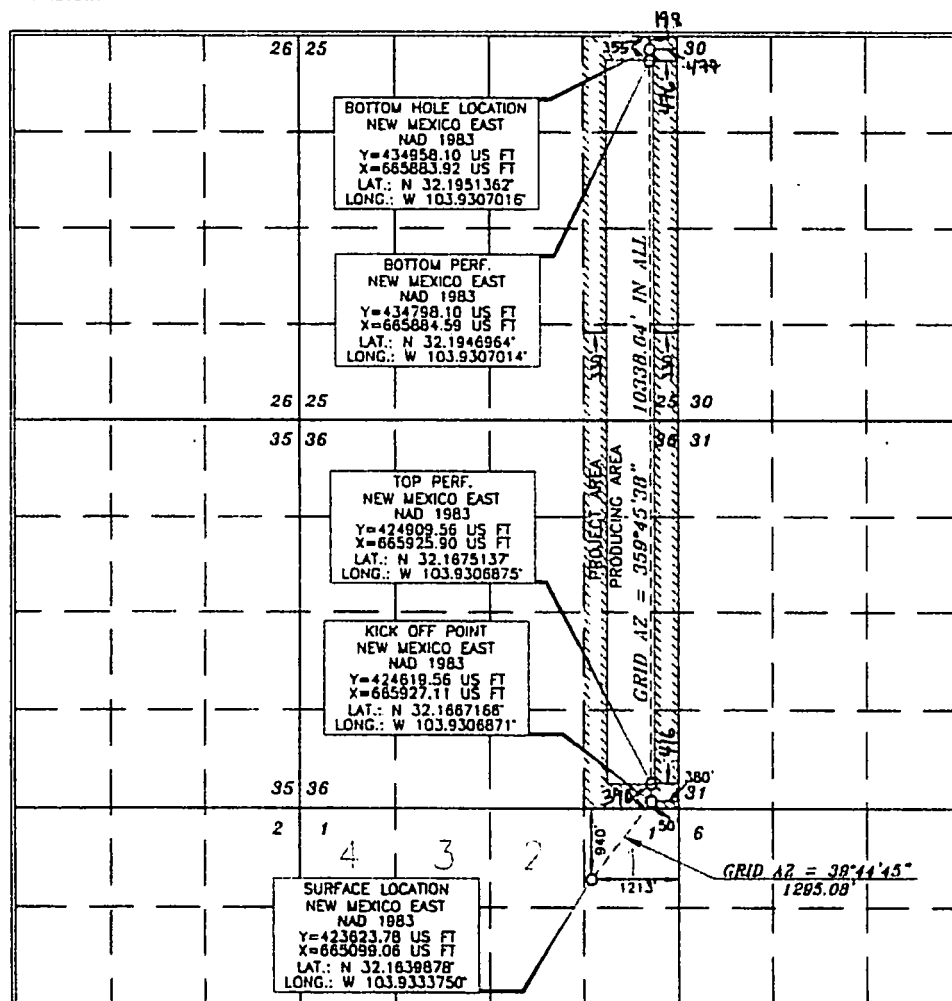
Surface Location

UL or lot no.	Section	Township	Range	Lot Idn	Feet from the	North/South line	Feet from the	East/West line	County
1	1	25 SOUTH	29 EAST, N.M.P.M.		940'	NORTH	1213'	EAST	EDDY

Bottom Hole Location If Different From Surface

UL or lot no.	Section	Township	Range	Lot Idn	Feet from the	North/South line	Feet from the	East/West line	County
A	25	24 SOUTH	29 EAST, N.M.P.M.		180' 148'	NORTH	800' 447'	EAST	EDDY
Dedicated Acres 320	Joint or Infill Y	Consolidation Code	Order No.	BP- 355 FNL 476 FEL TP- 396 FSL 416 FEL					

No allowable will be assigned to this completion until all interests have been consolidated or a non-standard unit has been approved by the division.



OPERATOR CERTIFICATION

I hereby certify that the information contained herein is true and complete to the best of my knowledge and belief, and that this organization either owns a working interest or undivided mineral interest in the land including the proposed bottom hole location or has a right to drill this well at this location pursuant to a contract with an owner of such a mineral or working interest, or to a voluntary pooling agreement or a compulsory pooling order heretofore entered by the Division.

Signature: **Jana Mendiola** Date: **5/27/18**
Printed Name: **Jana Mendiola**
E-mail Address: **janalyn-mendiola@oxy.com**

SURVEYOR CERTIFICATION

I hereby certify that the well location shown on this plat was plotted from a true and correct survey made by me or under my supervision and that the same is true and correct to the best of my belief.

Date of Survey: **AUGUST 14, 2017**
Signature and Seal of Professional Surveyor: **Terry J. Paul**
Certificate Number: **15079**