

UNITED STATES
DEPARTMENT OF THE INTERIOR
BUREAU OF LAND MANAGEMENT

OCD Artesia

FORM APPROVED
OMB No. 1004-0137
Expires: July 31, 2010

WELL COMPLETION OR RECOMPLETION REPORT AND LOG

5. Lease Serial No.
NMNM88139

6. If Indian, Allottee or Tribe Name

7. Unit or CA Agreement Name and No.

8. Lease Name and Well No.
CORRAL FLY 35-26 FEDERAL COM 21H

9. API Well No.
30-015-44702-00-S1

10. Field and Pool, or Exploratory
PIERCE CROSSING-BONE SPRING, E

11. Sec., T., R., M., or Block and Survey
or Area Sec 2 T25S R29E Mer NMP

12. County or Parish
EDDY

13. State
NM

17. Elevations (DF, KB, RT, GL)*
3016 GL

22. Was well cored? ☒ No ☐ Yes (Submit analysis)
Was DST run? ☒ No ☐ Yes (Submit analysis)
Directional Survey? ☐ No ☒ Yes (Submit analysis)

1a. Type of Well ☒ Oil Well ☐ Gas Well ☐ Dry ☐ Other
b. Type of Completion ☒ New Well ☐ Work Over ☐ Deepen ☐ Plug Back ☐ Diff. Resvr.
Other

2. Name of Operator
OXY USA INCORPORATED
Contact: JANA MENDIOLA
E-Mail: janalyn_mendiola@oxy.com

3. Address 5 GREENWAY PLAZA SUITE 110
HOUSTON, TX 77046-0521

3a. Phone No. (include area code)
Ph: 432-685-5936

4. Location of Well (Report location clearly and in accordance with Federal requirements)*
Sec 2 T25S R29E Mer NMP
At surface Lot 4 694FNL 1248FWL 32.164627 N Lat, 103.959659 W Lon
Sec 35 T24S R29E Mer NMP
At top prod interval reported below SWSW 372FSL 522FWL 32.167556 N Lat, 103.962018 W Lon
Sec 26 T24S R29E Mer NMP
At total depth NWNW 158FNL 433FWL 32.195153 N Lat, 103.962086 W Lon

14. Date Spudded
03/31/2018

15. Date T.D. Reached
05/26/2018

16. Date Completed
☐ D & A ☒ Ready to Prod.
07/20/2018

18. Total Depth: MD 19584 TVD 8928

19. Plug Back T.D.: MD 19470 TVD 8926

20. Depth Bridge Plug Set: MD TVD

21. Type Electric & Other Mechanical Logs Run (Submit copy of each)
MUDLOG

23. Casing and Liner Record (Report all strings set in well)

Hole Size	Size/Grade	Wt. (#/ft.)	Top (MD)	Bottom (MD)	Stage Cementer Depth	No. of Sk. & Type of Cement	Slurry Vol. (BBL)	Cement Top*	Amount Pulled
14.750	10.750 J55	45.5	0	412		418	99	0	
9.875	7.625 L80	26.4	0	8168	3259	1885	613	0	
6.750	5.500 P110	20.0	0	19519		846	218	7837	

24. Tubing Record

Size	Depth Set (MD)	Packer Depth (MD)	Size	Depth Set (MD)	Packer Depth (MD)	Size	Depth Set (MD)	Packer Depth (MD)

25. Producing Intervals

Formation	Top	Bottom	Perforated Interval	Size	No. Holes	Perf. Status
A) BONE SPRING 2ND	9509	19389	9509 TO 19389	0.370	1200	ACTIVE
B)						
C)						
D)						

27. Acid, Fracture, Treatment, Cement Squeeze, Etc.

Depth Interval	Amount and Type of Material
9509 TO 19389	12299826G SLICKWATER W/ 15007465# SAND

DISTRICT II-ARTESIA O.C.D.

28. Production - Interval A

Date First Produced	Test Date	Hours Tested	Test Production	Oil BBL	Gas MCF	Water BBL	Oil Gravity Corr. API	Gas Gravity	Production Method
07/22/2018	08/19/2018	24	→	6265.0	10229.0	3447.0			FLows FROM WELL
Choke Size	Tbg. Press. Flwg.	Csg. Press.	24 Hr. Rate	Oil BBL	Gas MCF	Water BBL	Gas:Oil Ratio	Well Status	
128/128	SI	890.0	→	6265	10229	3447	1633	ROW	

28a. Production - Interval B

Date First Produced	Test Date	Hours Tested	Test Production	Oil BBL	Gas MCF	Water BBL	Oil Gravity Corr. API	Gas Gravity	Production Method
			→						
Choke Size	Tbg. Press. Flwg.	Csg. Press.	24 Hr. Rate	Oil BBL	Gas MCF	Water BBL	Gas:Oil Ratio	Well Status	
			→						

(See Instructions and spaces for additional data on reverse side)

ELECTRONIC SUBMISSION #438508 VERIFIED BY THE BLM WELL INFORMATION SYSTEM

** BLM REVISED ** BLM REVISED ** BLM REVISED ** BLM REVISED ** BLM REVISED **

Reclamation Due: 1/20/2018

ACCEPTED FOR RECORD
NOV 17 2018
BUREAU OF LAND MANAGEMENT
CARLSBAD FIELD OFFICE

28b. Production - Interval C

Date First Produced	Test Date	Hours Tested	Test Production	Oil BBL	Gas MCF	Water BBL	Oil Gravity Corr. API	Gas Gravity	Production Method
			→						
Choke Size	Tbg. Press. Flwg. SI	Csg. Press.	24 Hr. Rate	Oil BBL	Gas MCF	Water BBL	Gas:Oil Ratio	Well Status	
			→						

28c. Production - Interval D

Date First Produced	Test Date	Hours Tested	Test Production	Oil BBL	Gas MCF	Water BBL	Oil Gravity Corr. API	Gas Gravity	Production Method
			→						
Choke Size	Tbg. Press. Flwg. SI	Csg. Press.	24 Hr. Rate	Oil BBL	Gas MCF	Water BBL	Gas:Oil Ratio	Well Status	
			→						

29. Disposition of Gas(Sold, used for fuel, vented, etc.)
SOLD

30. Summary of Porous Zones (Include Aquifers):

Show all important zones of porosity and contents thereof: Cored intervals and all drill-stem tests, including depth interval tested, cushion used, time tool open, flowing and shut-in pressures and recoveries.

31. Formation (Log) Markers

Formation	Top	Bottom	Descriptions, Contents, etc.	Name	Top
					Meas. Depth
BELL CANYON	3188	4043	OIL, GAS, WATER	RUSTLER	235
CHERRY CANYON	4044	5370	OIL, GAS, WATER	SALADO	592
BRUSHY CANYON	5371	6897	OIL, GAS, WATER	CASTILE	1636
BONE SPRING	6898	7875	OIL, GAS, WATER	DELAWARE	3140
BONE SPRING 1ST	7876	8710	OIL, GAS, WATER	BELL CANYON	3188
BONE SPRING 2ND	8711	8928	OIL, GAS, WATER	CHERRY CANYON	4044
				BRUSHY CANYON	5371
				BONE SPRING	6898

32. Additional remarks (include plugging procedure):
52. FORMATION (LOG) MARKERS CONTD.

1ST BONE SPRINGS 7876'M
2ND BONE SPRINGS 8711'M

Logs were mailed 10/8/18.

33. Circle enclosed attachments:

- Electrical/Mechanical Logs (1 full set req'd.)
- Geologic Report
- DST Report
- Directional Survey
- Sundry Notice for plugging and cement verification
- Core Analysis
- Other:

34. I hereby certify that the foregoing and attached information is complete and correct as determined from all available records (see attached instructions):

Electronic Submission #438508 Verified by the BLM Well Information System.

For OXY USA INCORPORATED, sent to the Carlsbad

Committed to AFMSS for processing by DUNCAN WHITLOCK on 10/10/2018 (19DW0018SE)

Name (please print) DAVID STEWART

Title SR. REGULATORY ADVISOR

Signature (Electronic Submission)

Date 10/05/2018

Title 18 U.S.C. Section 1001 and Title 43 U.S.C. Section 1212, make it a crime for any person knowingly and willfully to make to any department or agency of the United States any false, fictitious or fraudulent statements or representations as to any matter within its jurisdiction.

**** REVISED ** REVISED ** REVISED ** REVISED ** REVISED ** REVISED ** REVISED ** REVISED ****

Additional data for transaction #438508 that would not fit on the form

32. Additional remarks, continued

Log Header, Directional Survey, As-Drilled Amended C-102 plat & WBD are attached.

District I
1624 N. French Dr., Hobbs, NM 88240
Phone: (575) 393-6161 Fax: (575) 393-0720
District II
811 S. First St., Artesia, NM 88210
Phone: (575) 748-1283 Fax: (575) 748-9720
District III
1000 Rio Trujillo Road, Aztec, NM 87410
Phone: (505) 334-6178 Fax: (505) 334-6170
District IV
1220 S. St. Francis Dr., Santa Fe, NM 87505
Phone: (505) 476-3460 Fax: (505) 476-3462

State of New Mexico
Energy, Minerals & Natural Resources Department
OIL CONSERVATION DIVISION
1220 South St. Francis Dr.
Santa Fe, NM 87505

Form C-102
Revised August 1, 2011
Submit one copy to appropriate
District Office

☒ AMENDED REPORT
(As-Drilled)

WELL LOCATION AND ACREAGE DEDICATION PLAT

API Number 30-015-44702	Pool Code 96473	Pool Name Pierce Crossing Bone Spring, East
Property Code 320767	Property Name CORRAL FLY "35-26" FEDERAL COM	Well Number 21H
OGRID No. 16696	Operator Name OXY USA INC.	Elevation 3016.0'

Surface Location

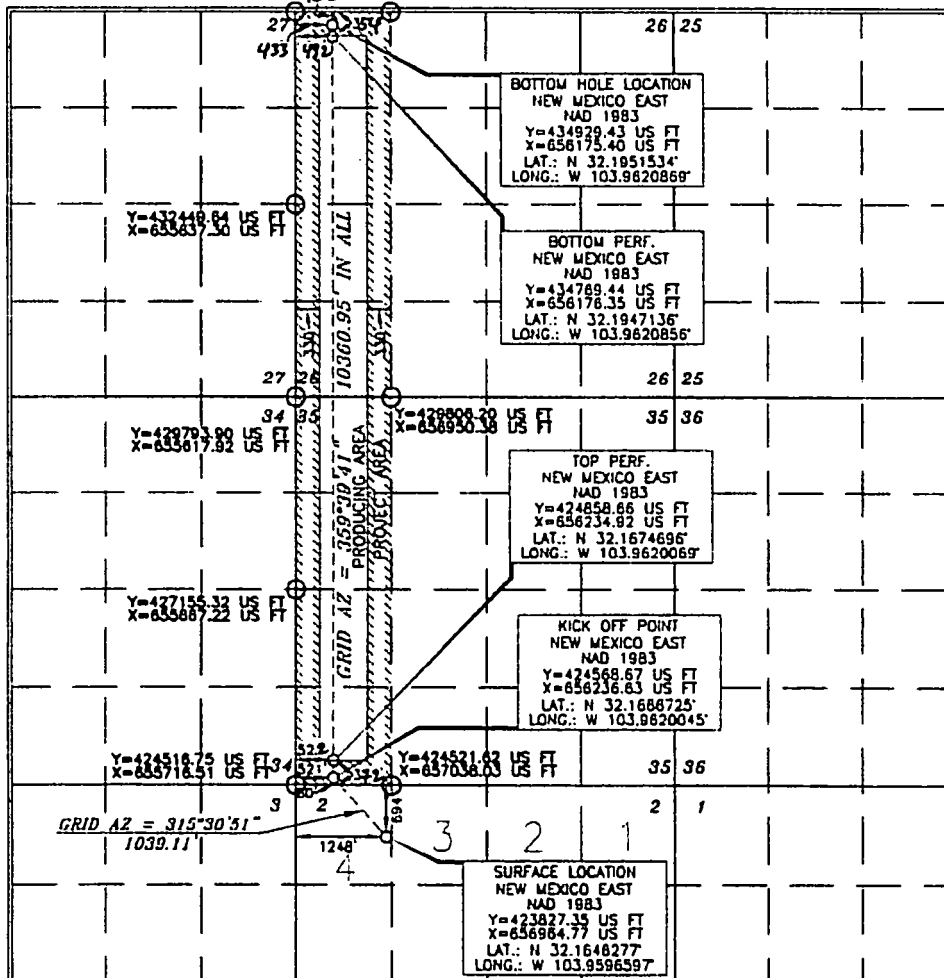
UL or lot no.	Section	Township	Range	Lot Idn	Feet from the	North/South line	Feet from the	East/West line	County
4	2	25 SOUTH	29 EAST, N.M.P.M.		694'	NORTH	1248'	WEST	EDDY

Bottom Hole Location If Different From Surface

UL or lot no.	Section	Township	Range	Lot Idn	Feet from the	North/South line	Feet from the	East/West line	County
D	26	24 SOUTH	29 EAST, N.M.P.M.		100' 158'	NORTH	580' 933'	WEST	EDDY
Dedicated Acres 320	Joint or Infill Y	Consolidation Code	Order No.	BP - 354 FNL 492 FNL TP - 372 FSL 522 FNL					

No allowable will be assigned to this completion until all interests have been consolidated or a non-standard unit has been approved by the division.

Y=433105.39 US FT X=653658.87 US FT
Y=433115.73 US FT X=653661.82 US FT



OPERATOR CERTIFICATION

I hereby certify that the information contained herein is true and complete to the best of my knowledge and belief, and that this organization either owns a working interest or mineral interest or interest in the land (including the proposed bottom hole location) or has a right to drill this well at this location pursuant to a contract with an owner of such a mineral or working interest, or to a voluntary pooling agreement or a compulsory pooling order heretofore entered by the division.

[Signature] 7/12/18
Date
Jana Mendiola
Printed Name
janelyn_mendiola@oxy.com
E-mail Address

SURVEYOR CERTIFICATION

I hereby certify that the information shown on this plat was obtained from a true and correct survey made by me or under my supervision, and that the same is true and correct to the best of my belief.

[Signature]
Date of Survey
Signature and Seal
Professional Surveyor

[Signature] 1/14/2012
Certificate Number 15079