

District I
1625 N. French Dr., Hobbs, NM 88240
Phone: (575) 393-6161 Fax: (575) 393-0720
District II
811 S. First St., Artesia, NM 88210
Phone: (575) 748-1283 Fax: (575) 748-9720
District III
1000 Rio Brazos Road, Aztec, NM 87410
Phone: (505) 334-6178 Fax: (505) 334-6170
District IV
1220 S. St. Francis Dr., Santa Fe, NM 87505
Phone: (505) 476-3460 Fax: (505) 476-3462

State of New Mexico
Energy, Minerals & Natural Resources
Department
OIL CONSERVATION DIVISION
1220 South St. Francis Dr.
Santa Fe, NM 87505

DEC 14 2018

FORM C-102
Revised August 1, 2011
Submit one copy to appropriate
District Office

RECEIVED

AMENDED REPORT

WELL LOCATION AND ACREAGE DEDICATION PLAT

| | | | | | |
|---|--|---|--|---|-----------------------------------|
| ¹ API Number 30-015-45556 | | ² Pool Code 98220 | | ³ Pool Name Purple Sage; Wolfcamp (Gas) | |
| ⁴ Property Code 321453 | | ⁵ Property Name GENERAL KEHOE 02-24S-28E RB | | | ⁶ Well Number #208H |
| ⁷ GRID No. 228937 | | ⁸ Operator Name MATADOR PRODUCTION COMPANY | | | ⁹ Elevation 2981' |

¹⁰Surface Location

| UL or lot no. | Section | Township | Range | Lot Idn | Feet from the | North/South line | Feet from the | East/West line | County |
|---------------|---------|----------|-------|---------|---------------|------------------|---------------|----------------|--------|
| P | 2 | 24-S | 28-E | - | 218' | NORTH | 339' | EAST | EDDY |

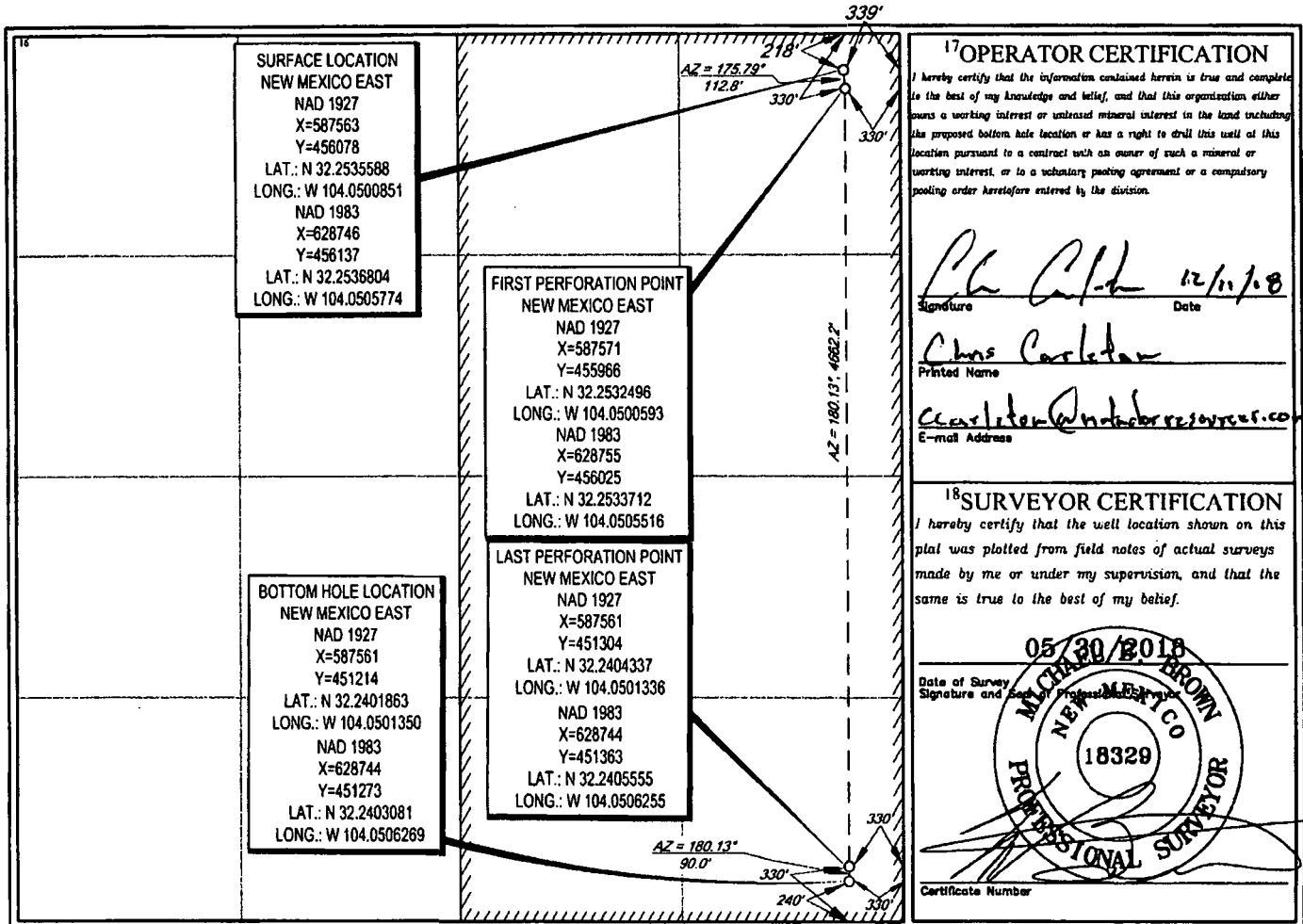
¹¹Bottom Hole Location If Different From Surface

| UL or lot no. | Section | Township | Range | Lot Idn | Feet from the | North/South line | Feet from the | East/West line | County |
|---------------|---------|----------|-------|---------|---------------|------------------|---------------|----------------|--------|
| 1A | 2 | 24-S | 28-E | - | 240' | SOUTH | 330' | EAST | EDDY |

| | | | |
|---|------------------------------------|----------------------------------|-------------------------|
| ¹² Dedicated Acres 319.84 | ¹³ Joint or Infill Y | ¹⁴ Consolidation Code | ¹⁵ Order No. |
|---|------------------------------------|----------------------------------|-------------------------|

325.01

No allowable will be assigned to this completion until all interests have been consolidated or a non-standard unit has been approved by the division.



RWP 12-18-18