

See COA at bottom of page!

District I
1625 N. French Dr., Hobbs, NM 88240
Phone: (575) 393-6161 Fax: (575) 393-0720
District II
811 S. First St., Artesia, NM 88210
Phone: (575) 748-1283 Fax: (575) 748-9720
District III
1000 Rio Brazos Road, Aztec, NM 87410
Phone: (505) 334-6178 Fax: (505) 334-6170
District IV
1220 S. St. Francis Dr., Santa Fe, NM 87505
Phone: (505) 476-3460 Fax: (505) 476-3462

State of New Mexico

Form C-101
Revised July 18, 2013

Energy Minerals and Natural Resources

NM OIL CONSERVATION
Oil Conservation Division ARTESIA DISTRICT ☐ AMENDED REPORT

1220 South St. Francis Dr. JAN 10 2019
Santa Fe, NM 87505

RECEIVED

APPLICATION FOR PERMIT TO DRILL, RE-ENTER, DEEPEN, PLUGBACK, OR ADD A ZONE

¹ Operator Name and Address Probity SWD, LLC PO Box 7307 Midland, TX 79708		² OGRID Number 296278
		³ APIN Number 30-015-45670
⁴ Property Code 324927 (TBD)	⁵ Property Name Mac-Brant East SWD	⁶ Well No. 1

⁷ Surface Location
(To be verified by field survey)

UL - Lot	Section	Township	Range	Lot Idn	Feet from	N/S Line	Feet From	E/W Line	County
N	23	24S	29E		1160	FSL	2590	FWL	EDDY

⁸ Proposed Bottom Hole Location
(To be verified by field survey)

UL - Lot	Section	Township	Range	Lot Idn	Feet from	N/S Line	Feet From	E/W Line	County
N	23	24S	29E		1160	FSL	2590	FWL	EDDY

⁹ Pool Information

Pool Name SWD; Devonian-Silurian	Pool Code 97869
-------------------------------------	--------------------

Additional Well Information

¹¹ Work Type N	¹² Well Type SWD	¹³ Cable/Rotary R	¹⁴ Lease Type P	¹⁵ Ground Level Elevation 3035'
¹⁶ Multiple No	¹⁷ Proposed Depth 16,500'	¹⁸ Formation Devonian	¹⁹ Contractor TBD	²⁰ Spud Date 3/15/2019
Depth to Ground water 21' avg		Distance from nearest fresh water well 2915'		Distance to nearest surface water >1mile

☒ We will be using a closed-loop system in lieu of lined pits


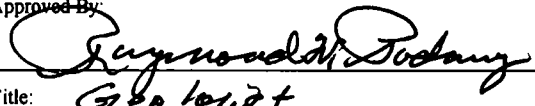
²¹ Proposed Casing and Cement Program

Type	Hole Size	Casing Size	Casing Weight/ft	Setting Depth	Sacks of Cement	Estimated TOC
Surface	26.5"	20.0"	94.0 lb/ft	350'	1050	SURFACE
Intermdt	17.5"	13.375"	68.0 lb/ft	3280'	1600	SURFACE
Production	12.25"	9.625"	53.5 lb/ft	11,000'	2350	SURFACE
Liner	8.5"	7.625"	39.0 lb/ft	10,700'-15,000'	450	TOL
OH	6.5"			15,000' - 16,500'		

Casing/Cement Program: Additional Comments

²² Proposed Blowout Prevention Program

Type	Working Pressure	Test Pressure	Manufacturer
Double Hydraulic/Blinds, Pipe	10000	10000	Hydril, Cameron or Equivalent

²³ I hereby certify that the information given above is true and complete to the best of my knowledge and belief. I further certify that I have complied with 19.15.14.9 (A) NMAC <input type="checkbox"/> and/or 19.15.14.9 (B) NMAC <input type="checkbox"/> , if applicable. Signature: 		OIL CONSERVATION DIVISION	
Printed name: Ben Stone		Approved By: 	
Title: Agent for Probity SWD, LLC		Title: <i>Geologist</i>	
E-mail Address: ben@sosconsulting.us		Approved Date: 1-31-19 Expiration Date: 1-31-21	
Date: 1/10/2019	Phone: 903-488-9850	Conditions of Approval Attached <i>APPROVED C-108</i>	

Required before spudding well

DISTRICT I
1625 N. French Dr., Hobbs, NM 88240
Phone: (575) 393-6161 Fax: (575) 393-0720

DISTRICT II
811 S. First St., Artesia, NM 88210
Phone: (575) 748-1283 Fax: (575) 748-9720

DISTRICT III
1000 Rio Brazos Road, Aztec, NM 87410
Phone: (505) 334-6178 Fax: (505) 334-6170

DISTRICT IV
1220 S. St. Francis Dr., Santa Fe, NM 87505
Phone: (505) 476-3460 Fax: (505) 476-3462

State of New Mexico
Energy, Minerals & Natural Resources Department
NEW OIL CONSERVATION
OIL CONSERVATION DIVISION ARTESIA DISTRICT
1220 South St. Francis Dr.
Santa Fe, New Mexico 87505

Form C-102
Revised August 1, 2011
Submit one copy to appropriate
District Office

JAN 10 2019

☐ AMENDED REPORT

WELL LOCATION AND ACREAGE DEDICATION PLAT

API Number 30-015- 45670	Pool Code 97869	Pool Name SWD; Devonian-Silurian
Property Code 324927	Property Name MAC-BRANT EAST SWD	Well Number 1
OGRID No. 296278	Operator Name PROBITY SWD, LLC.	Elevation 3035'

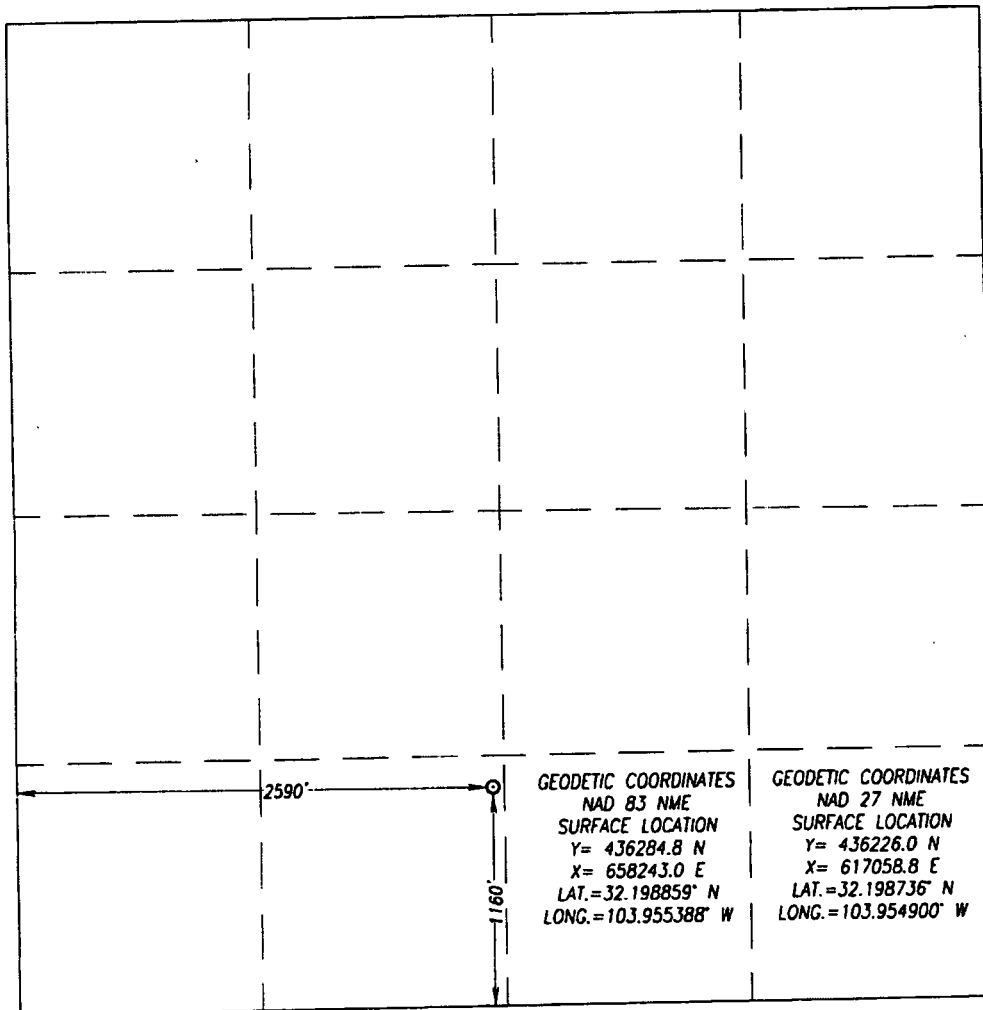
Surface Location

UL or lot No.	Section	Township	Range	Lot Idn	Feet from the	North/South line	Feet from the	East/West line	County
N	23	24-S	29-E		1160	SOUTH	2590	WEST	EDDY

Bottom Hole Location If Different From Surface

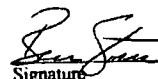
UL or lot No.	Section	Township	Range	Lot Idn	Feet from the	North/South line	Feet from the	East/West line	County
Dedicated Acres	Joint or Infill	Consolidation Code	Order No.						

NO ALLOWABLE WILL BE ASSIGNED TO THIS COMPLETION UNTIL ALL INTERESTS HAVE BEEN CONSOLIDATED OR A NON-STANDARD UNIT HAS BEEN APPROVED BY THE DIVISION



OPERATOR CERTIFICATION

I hereby certify that the information herein is true and complete to the best of my knowledge and belief, and that this organization either owns a working interest or unleased mineral interest in the land including the proposed bottom hole location or has a right to drill this well at this location pursuant to a contract with an owner of such mineral or working interest, or to a voluntary pooling agreement or a compulsory pooling order heretofore entered by the division.

 1/10/2019
Signature Date

Ben Stone
Printed Name

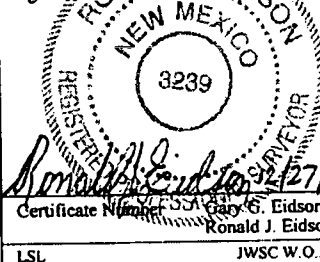
ben@sosconsulting.us
E-mail Address

SURVEYOR CERTIFICATION

I hereby certify that the well location shown on this plat was plotted from field notes of actual surveys made by me or under my supervision, and that the same is true and correct to the best of my belief.

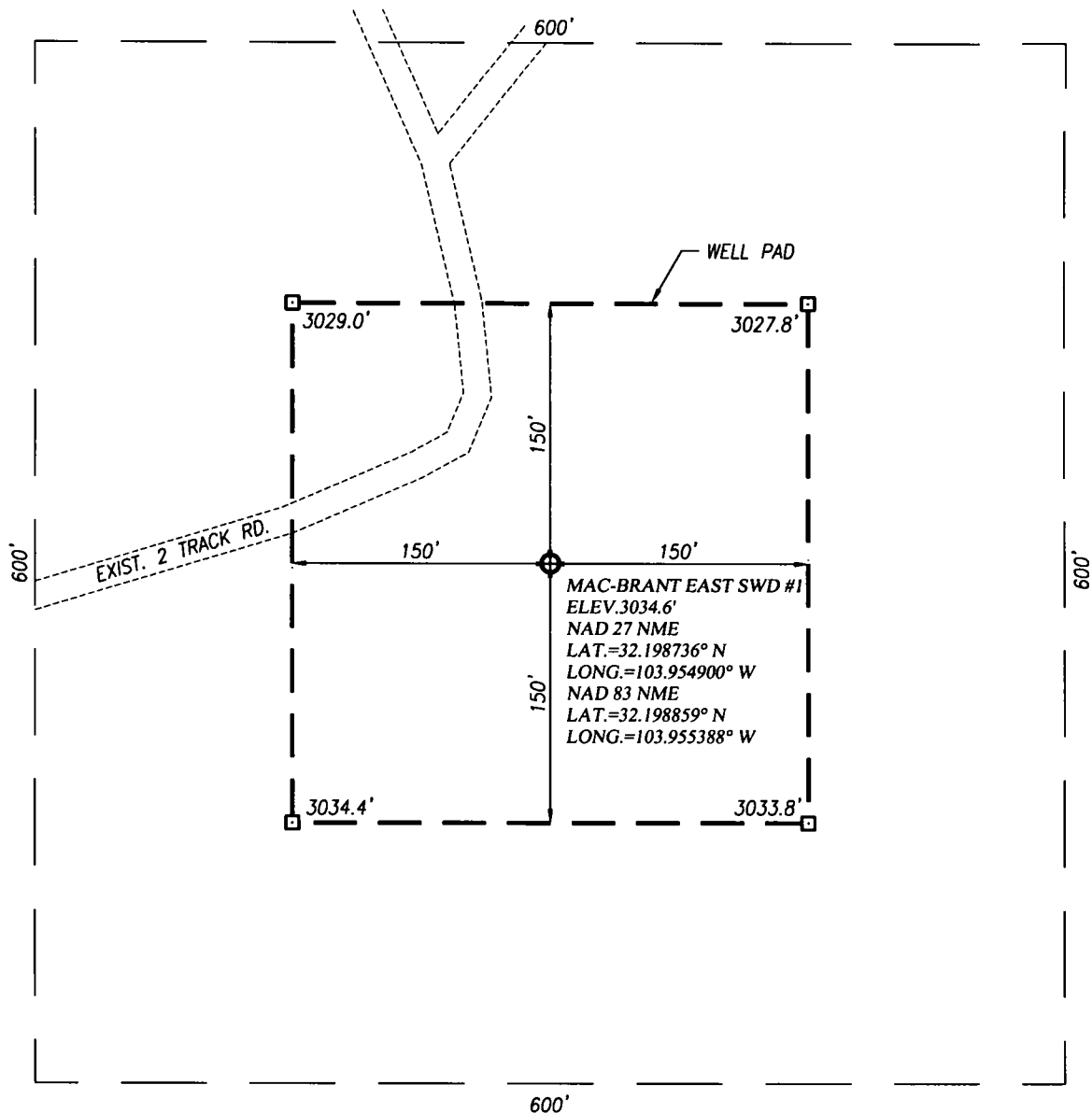
DECEMBER 10, 2018

Date of Survey
Signature & Seal of Professional Surveyor:


Certificate Number 12641
Ronald J. Eidson 3239

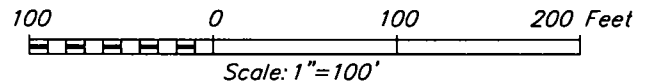
LSL JWSC W.O.: 18.11.1316

RWP1-31-19



1) SEE "TOPOGRAPHICAL AND ACCESS ROAD MAP" FOR PROPOSED ROAD LOCATION.

FROM THE INTERSECTION OF HWY. 285 AND CO. RD.
720(DUARTE RD.) GO EAST ON CO. RD. 720 APPROX. 1.25
MILES TO CO. RD. 748 GO SOUTH APPROX 0.7 MILES TURN
LEFT AND GO SOUTHEAST APPROX. 6.0 MILES ROAD BENDS
NORTH APPROX. 0.9 MILES ACROSS PECOS RIVER, TURN RIGHT
AND GO EAST APPROX. 0.7 MILES ROAD BENDS LT GO NORTH
APPROX. 0.2 MILES. TURN RIGHT AND GO EAST APPROX. 0.5
MILES TO THIS LOCATION.



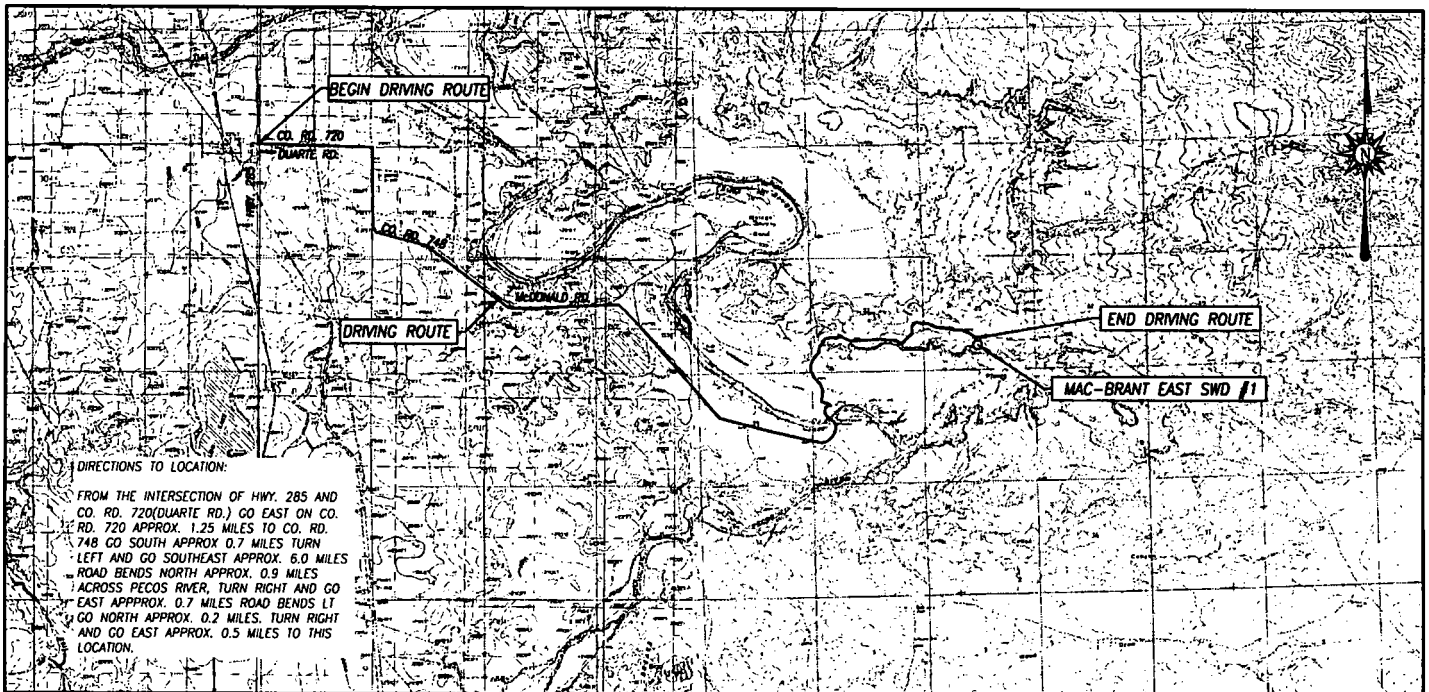
**MAC-BRANT EAST SWD #1 WELL LOCATED 1160 FEET FROM
THE SOUTH LINE AND 2590 FEET FROM THE WEST LINE OF
SECTION 23, TOWNSHIP 24 SOUTH, RANGE 29 EAST, N.M.P.M.,
EDDY COUNTY, NEW MEXICO**



412 N. DAL PASO HOBBS, N.M. 88240
(575) 393-3117 www.jwsc.biz
TBPLS# 10021000

Sheet 1 of 1

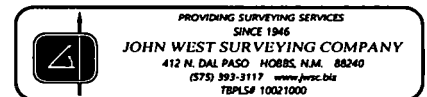
TOPOGRAPHIC AND ACCESS ROAD MAP



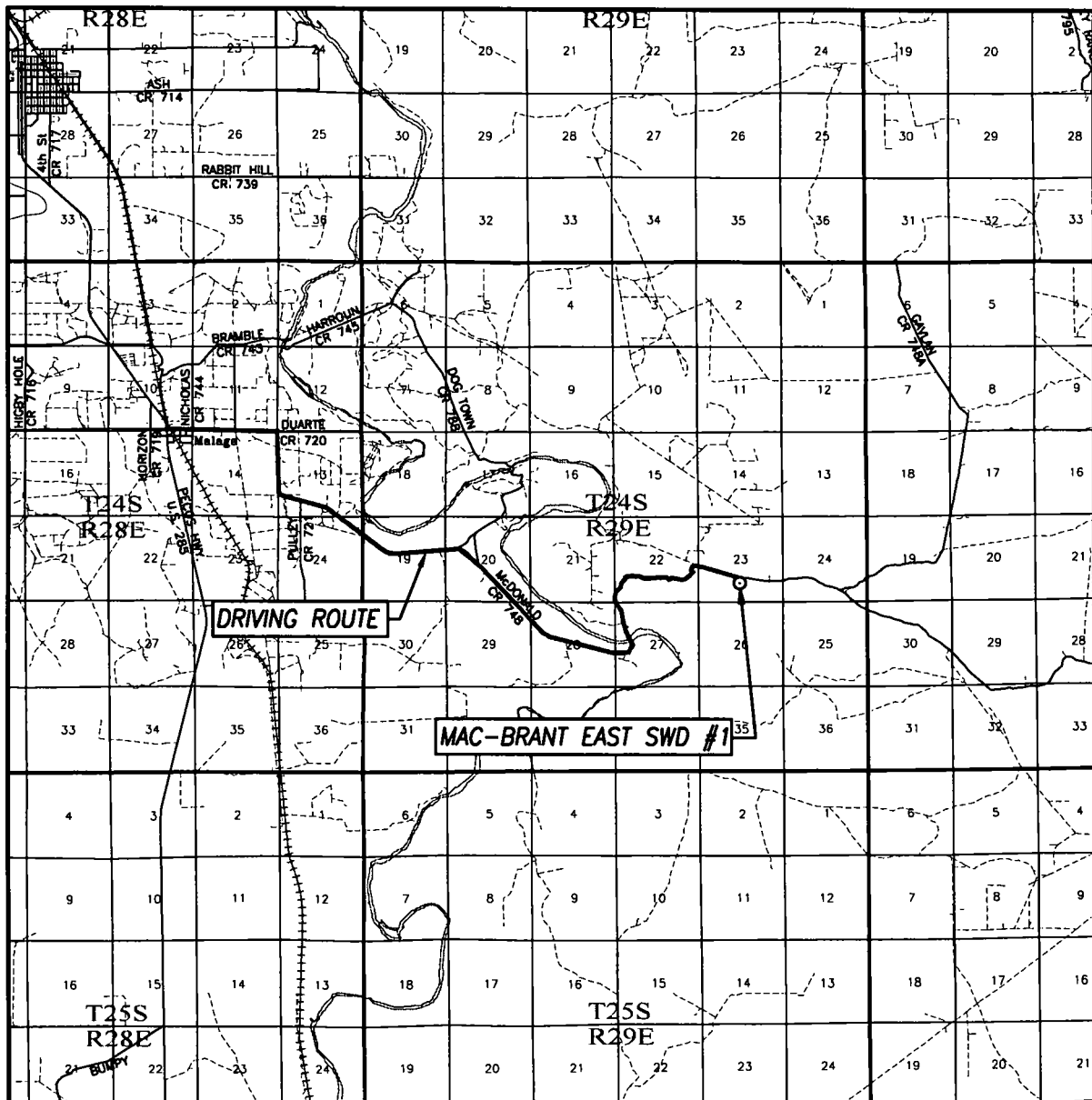
SEC. 23 TWP. 24-S. RGE. 29-E
 COUNTY EDDY, STATE NEW MEXICO
 DESCRIPTION 1160' FSL & 2590' FWL
 ELEVATION 3035'
 OPERATOR PROBITY SWD, LLC.
 LEASE MAC-BRANT EAST SWD
 U.S.G.S. TOPOGRAPHIC MAP
 PIERCE CANYON, N.M. SURVEY N.M.P.M.

SCALE: 1" = 5280'

CONTOUR INTERVAL:
 PIERCE CANYON, N.M. - 10'



VICINITY MAP



SCALE: 1" = 2 MILES

DRIVING ROUTE: SEE TOPOGRAPHICAL AND ACCESS ROAD MAP

SEC. 23 TWP. 24-S RGE. 29-E

SURVEY N.M.P.M.


COUNTY EDDY STATE NEW MEXICO

DESCRIPTION 1160' FSL & 2590' FWL

ELEVATION 3035'

OPERATOR PROBITY SWD, LLC.

LEASE MAC-BRANT EAST SWD



PROVIDING SURVEYING SERVICES
SINCE 1946

JOHN WEST SURVEYING COMPANY

412 N. DAL PASO HOBBS, N.M. 88240
(575) 393-3117 www.jwsc.biz
TBPLS# 10021000

DISTRICT I
1625 N. French Dr., Hobbs, NM 88240
Phone: (505) 393-6161 Fax: (505) 393-0720

DISTRICT II
811 S. First St., Artesia, NM 88210
Phone: (505) 748-1283 Fax: (505) 748-9720

DISTRICT III
1000 Rio Brazos Road, Aztec, NM 87410
Phone: (505) 334-6178 Fax: (505) 334-6170

DISTRICT IV
1220 S. St. Francis Dr., Santa Fe, NM 87505
Phone: (505) 476-3460 Fax: (505) 476-3462

State of New Mexico
Energy, Minerals & Natural Resources Department
OIL CONSERVATION DIVISION
1220 South St. Francis Dr.
Santa Fe, New Mexico 87505

Form C-102
Revised August 1, 2011
Submit one copy to appropriate
District Office

☐ AMENDED REPORT

WELL LOCATION AND ACREAGE DEDICATION PLAT

API Number	Pool Code	Pool Name
Property Code	Property Name MAC-BRANT EAST SWD	
OGRID No.	Operator Name PROBITY SWD, LLC.	Well Number 1
		Elevation 3035'

Surface Location

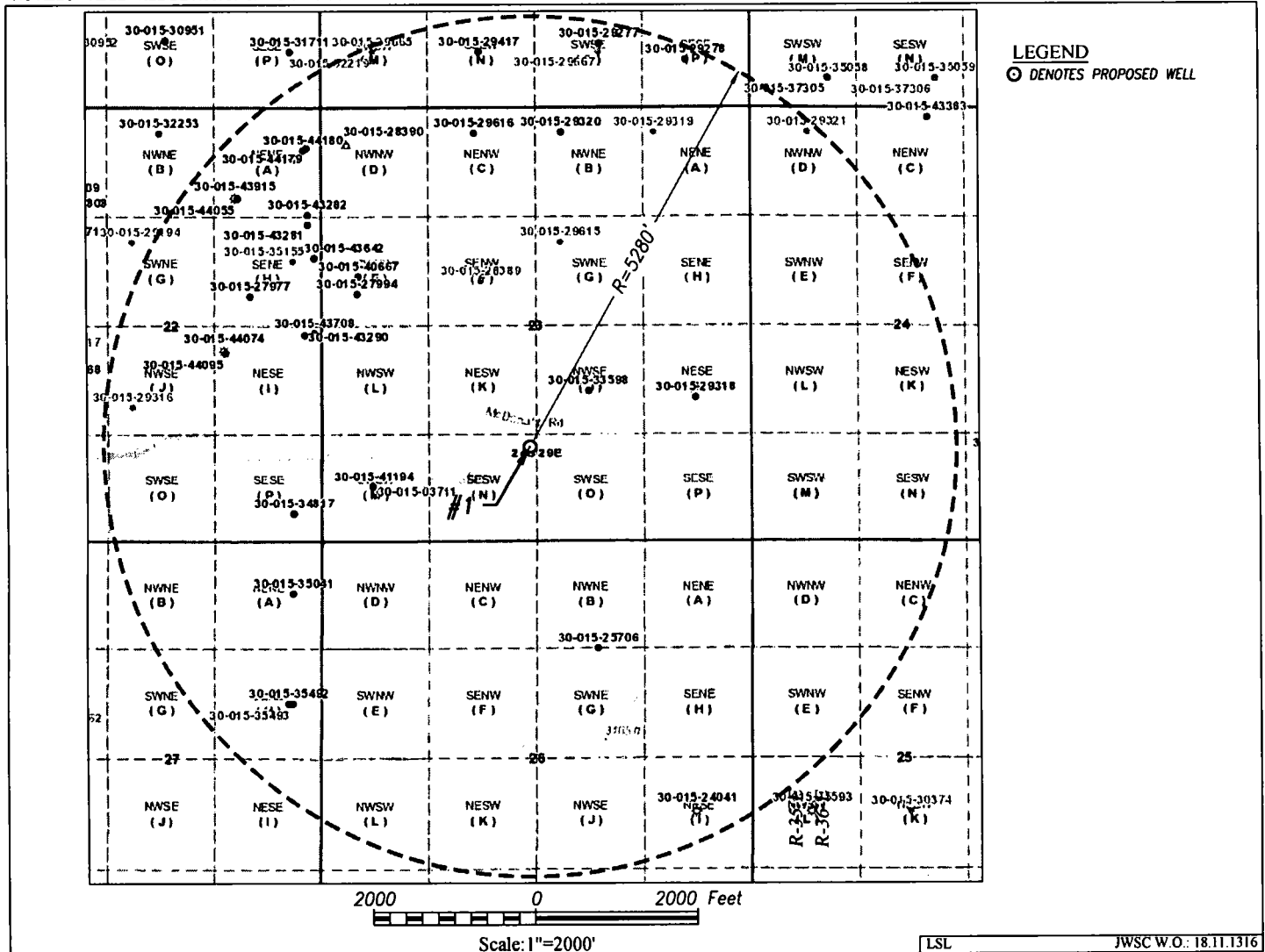
UL or lot No.	Section	Township	Range	Lot Idn	Feet from the	North/South line	Feet from the	East/West line	County
N	23	24-S	29-E		1160	SOUTH	2590	WEST	EDDY

Bottom Hole Location If Different From Surface

UL or lot No.	Section	Township	Range	Lot Idn	Feet from the	North/South line	Feet from the	East/West line	County

Dedicated Acres	Joint or Infill	Consolidation Code	Order No.

NO ALLOWABLE WILL BE ASSIGNED TO THIS COMPLETION UNTIL ALL INTERESTS HAVE BEEN CONSOLIDATED OR A NON-STANDARD UNIT HAS BEEN APPROVED BY THE DIVISION



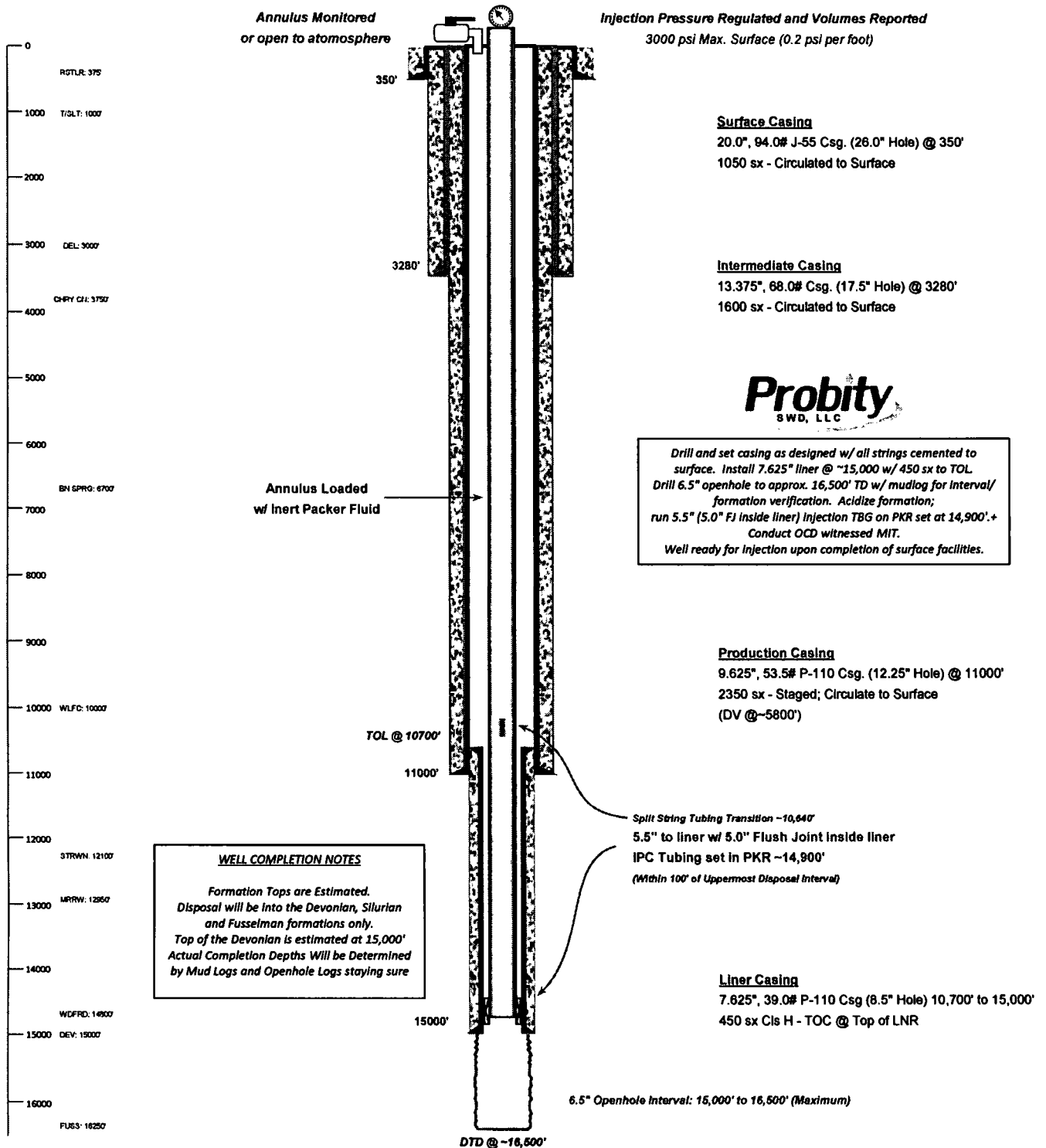


WELL SCHEMATIC - PROPOSED Mac-Brant East SWD Well No.1

API 30-015-xxxxx
1160' FSL & 2590' FWL, SEC. 23-T24S-R29E
EDDY COUNTY, NEW MEXICO

Proposed: SWD; Devonian-Silurian-Fusselman

Spud Date: 3/01/2019
SWD Config Dt: 4/15/2019



Drawn by: Ben Stone, 11/29/2018

