

**NM OIL CONSERVATION
ARTESIA DISTRICT**

FEB 05 2019

DISTRICT I
1622 N. PIERCE DR., HOBBBS, NM 88240
Phone: (776) 965-4181 Fax: (776) 965-0783

DISTRICT II
811 S. FIRST ST., ARTESIA, NM 88210
Phone: (776) 748-1888 Fax: (776) 748-8790

DISTRICT III
1000 RIO BRAZOS RD., AUSTIN, NM 87410
Phone: (505) 834-6178 Fax: (505) 834-6170

DISTRICT IV
1820 S. ST. FRANCIS DR., SANTA FE, NM 87506
Phone: (505) 476-3400 Fax: (505) 476-3462

State of New Mexico
Energy, Minerals & Natural Resources Department
OIL CONSERVATION DIVISION
1220 SOUTH ST. FRANCIS DR.
Santa Fe, New Mexico 87505

RECEIVED
Revised August 1, 2011
Submit one copy to appropriate
District Office

AMENDED REPORT

WELL LOCATION AND ACREAGE DEDICATION PLAT

API Number 30-015-44983	Pool Code 98199	Pool Name PARKWAY; BONE SPRING, WEST
Property Code 38434	Property Name TURQUOISE PWU 27	Well Number 9H
OCRID No. 6137	Operator Name DEVON ENERGY PRODUCTION COMPANY, L.P.	Elevation 3344.7'

Surface Location

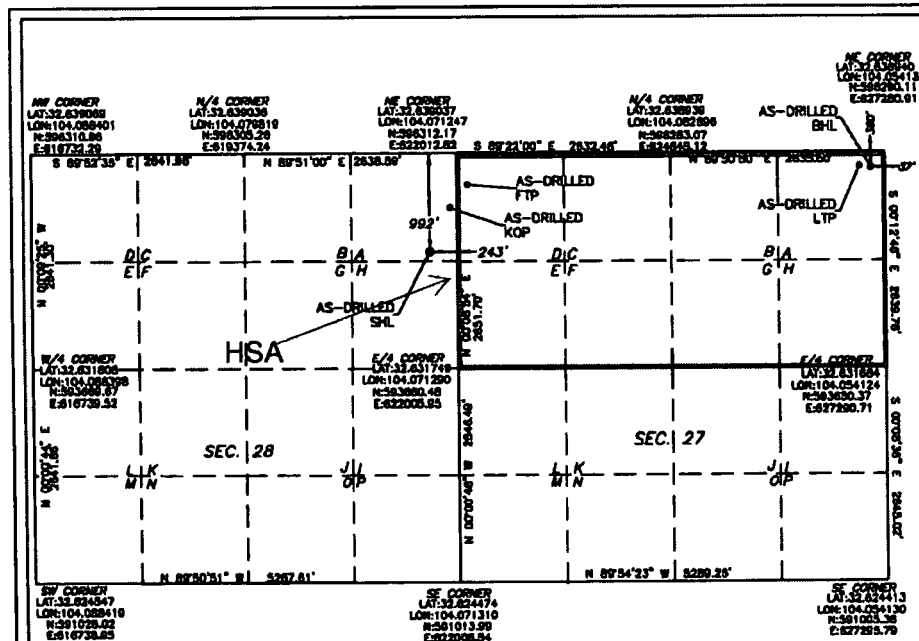
UL or lot No.	Section	Township	Range	Lot Idn	Feet from the	North/South line	Feet from the	East/West line	County
A	28	19-S	29-E		992	NORTH	243	EAST	EDDY

Bottom Hole Location If Different From Surface

UL or lot No.	Section	Township	Range	Lot Idn	Feet from the	North/South line	Feet from the	East/West line	County
A	27	19-S	29-E		360	NORTH	37	EAST	EDDY

Dedicated Acres 320	Joint or Infill	Consolidation Code	Order No.
------------------------	-----------------	--------------------	-----------

**NO ALLOWABLE WILL BE ASSIGNED TO THIS COMPLETION UNTIL ALL INTERESTS HAVE BEEN CONSOLIDATED
OR A NON-STANDARD UNIT HAS BEEN APPROVED BY THE DIVISION**



OPERATOR CERTIFICATION

I hereby certify that the information herein is true and complete to the best of my knowledge and belief, and that this organization either owns a working interest or an undivided mineral interest in the land including the proposed bottom hole location or has a right to drill this well at this location pursuant to a contract with an owner of such mineral or working interest, or to a voluntary pooling agreement or a compulsory pooling order heretofore entered by the division.

Erin Workman 01/25/19
Signature Date

Erin Workman
Printed Name

Erin.workman@dm.com
E-mail Address

SURVEYOR CERTIFICATION

I hereby certify that the well location shown on this plat was plotted from field notes of actual surveys made by me or under my supervision, and that the same is true and correct to the best of my belief.

06/2018
Date of Survey

Signature & Seal of Professional Surveyor



01/18/19

Certificate No. 22404 B.L. LAMAN

W.O. # DRAWN BY: CM

TURQUOISE PWU 27 9H
ELEV: 3344.7
N: 595719.87
E: 627182.42
LAT: 32.637779
LONG: -104.071521

AS-DRILLED KOP
585' FNL 83' FEL
N: 595719.83
E: 627182.83
LAT: 32.637779
LONG: -104.071521

AS-DRILLED FTP
458' FNL 100' FNL
N: 595854.55
E: 627111.84
LAT: 32.637779
LONG: -104.070929

AS-DRILLED LTP
356' FNL 100' FEL
N: 595932.18
E: 627182.25
LAT: 32.637957
LONG: -104.084456

AS-DRILLED BHL
N: 595929.87
E: 627745.69
LAT: 32.637950
LONG: -104.084250

Note: All bearings recited herein are based on the New Mexico State Plane Coordinate System, NAD 83, New Mexico East Zone 3001, US Survey Feet, all distances are grid.