

FEB 05 2019

RECEIVED

Form C-102
Revised August 1, 2011
Submit one copy to appropriate
District Office

DISTRICT I
1628 N. FRANKLIN DR., EL PASO, NM 88240
Phone: (978) 838-6181 Fax: (978) 838-6780

DISTRICT II
811 S. FIRST ST., ARTESIA, NM 88210
Phone: (978) 748-1883 Fax: (978) 748-8780

DISTRICT III
1000 RIO BRAZOS RD., ALBUQUERQUE, NM 87410
Phone: (505) 834-6178 Fax: (505) 834-6170

DISTRICT IV
1220 S. ST. FRANCIS DR., SANTA FE, NM 87505
Phone: (505) 476-8460 Fax: (505) 476-3468

State of New Mexico
Energy, Minerals & Natural Resources Department
OIL CONSERVATION DIVISION
1220 SOUTH ST. FRANCIS DR.
Santa Fe, New Mexico 87505

WELL LOCATION AND ACREAGE DEDICATION PLAT

AMENDED REPORT
As Drilled

API Number 30-015-44984	Pool Code 98199	Pool Name PARKWAY; BONE SPRING, WEST
Property Code 38434	Property Name TURQUOISE PWU 27	Well Number 61H
OGRID No. 6137	Operator Name DEVON ENERGY PRODUCTION COMPANY, L.P.	Elevation 3345.1'

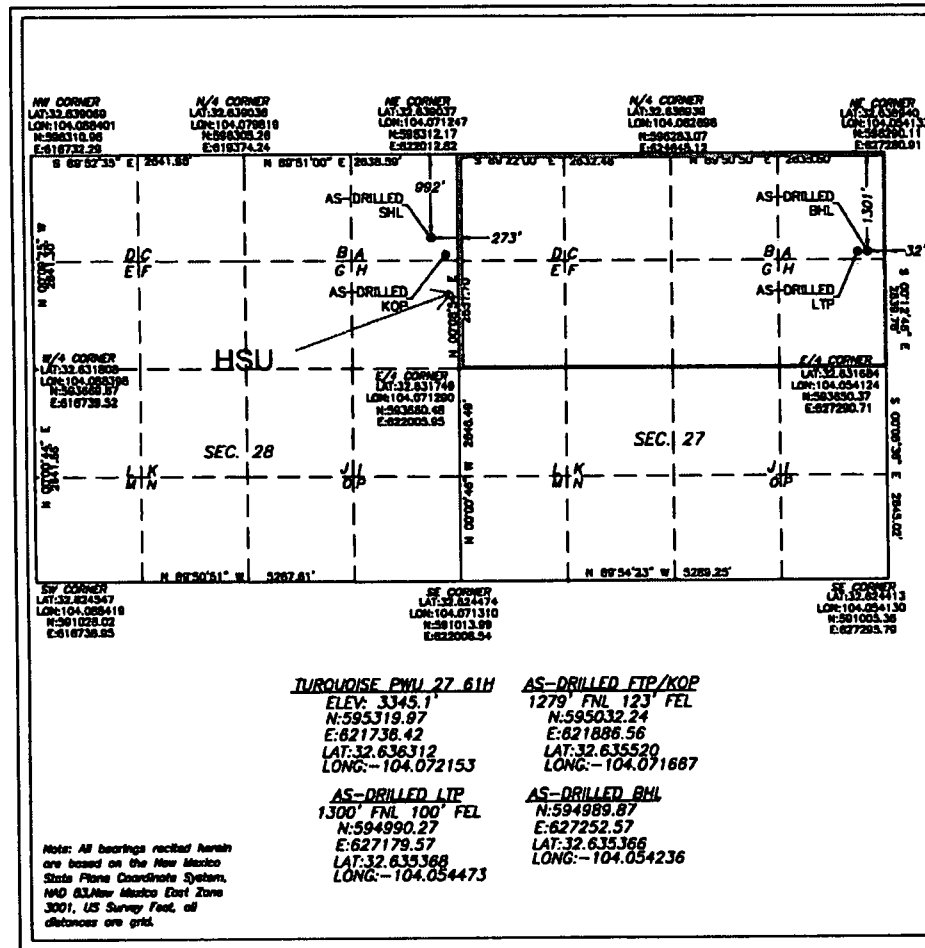
Surface Location

UL or lot No.	Section	Township	Range	Lot Idn	Feet from the	North/South line	Feet from the	East/West line	County
A	28	19-S	29-E		992	NORTH	273	EAST	EDDY

Bottom Hole Location If Different From Surface

UL or lot No.	Section	Township	Range	Lot Idn	Feet from the	North/South line	Feet from the	East/West line	County
A	27	19-S	29-E		1301	NORTH	32	EAST	EDDY
Dedicated Acres 320	Joint or Infill	Consolidation Code	Order No.						

NO ALLOWABLE WILL BE ASSIGNED TO THIS COMPLETION UNTIL ALL INTERESTS HAVE BEEN CONSOLIDATED
OR A NON-STANDARD UNIT HAS BEEN APPROVED BY THE DIVISION



OPERATOR CERTIFICATION

I hereby certify that the information herein is true and complete to the best of my knowledge and belief, and that this organization either owns a working interest or unleased mineral interest in the land including the proposed bottom hole location or has a right to drill this well at this location pursuant to a contract with an owner of such mineral or working interest, or to a voluntary pooling agreement or a compulsory pooling order heretofore entered by the division.

Signature: *Erin Workman* Date: 01/25/2019

Printed Name: Erin Workman
E-mail Address: Erin.workman@dmv.com

SURVEYOR CERTIFICATION

I hereby certify that the well location shown on this plat was plotted from field notes of actual surveys made by me or under my supervision, and that the same is true and correct to the best of my belief.

06/2018

Date of Survey

Signature & Seal of Professional Surveyor



01/18/19

Certificate No. 22404 B.L. LAMAN
W.O. # DRAWN BY: CM