

FEB 20 2019

DISTRICT I
1625 N. FRENCH DR., BOBBS, NM 88240
Phone: (505) 893-8181 Fax: (505) 893-0720

DISTRICT II
511 S. FIRST ST., ARTESIA, NM 88210
Phone: (505) 745-1283 Fax: (505) 745-0720

DISTRICT III
1000 RIO BRAZOS RD., AZTEC, NM 87410
Phone: (505) 834-6178 Fax: (505) 334-6170

DISTRICT IV
1220 S. ST. FRANCIS DR., SANTA FE, NM 87505
Phone: (505) 476-3460 Fax: (505) 476-3462

State of New Mexico
Energy, Minerals & Natural Resources Department
OIL CONSERVATION DIVISION
1220 SOUTH ST. FRANCIS DR.
Santa Fe, New Mexico 87505

RECEIVED
Form C-102
Revised August 1, 2011
Submit one copy to appropriate
District Office

☐ AMENDED REPORT

WELL LOCATION AND ACREAGE DEDICATION PLAT

API Number 30-015-45752	Pool Code 98220	Pool Name Purple Sage; Wolfcamp
Property Code 40178	Property Name MYOX 30 STATE COM	Well Number 801H
GRID No. 229137	Operator Name COG OPERATING, LLC	Elevation 3025.2'

Surface Location

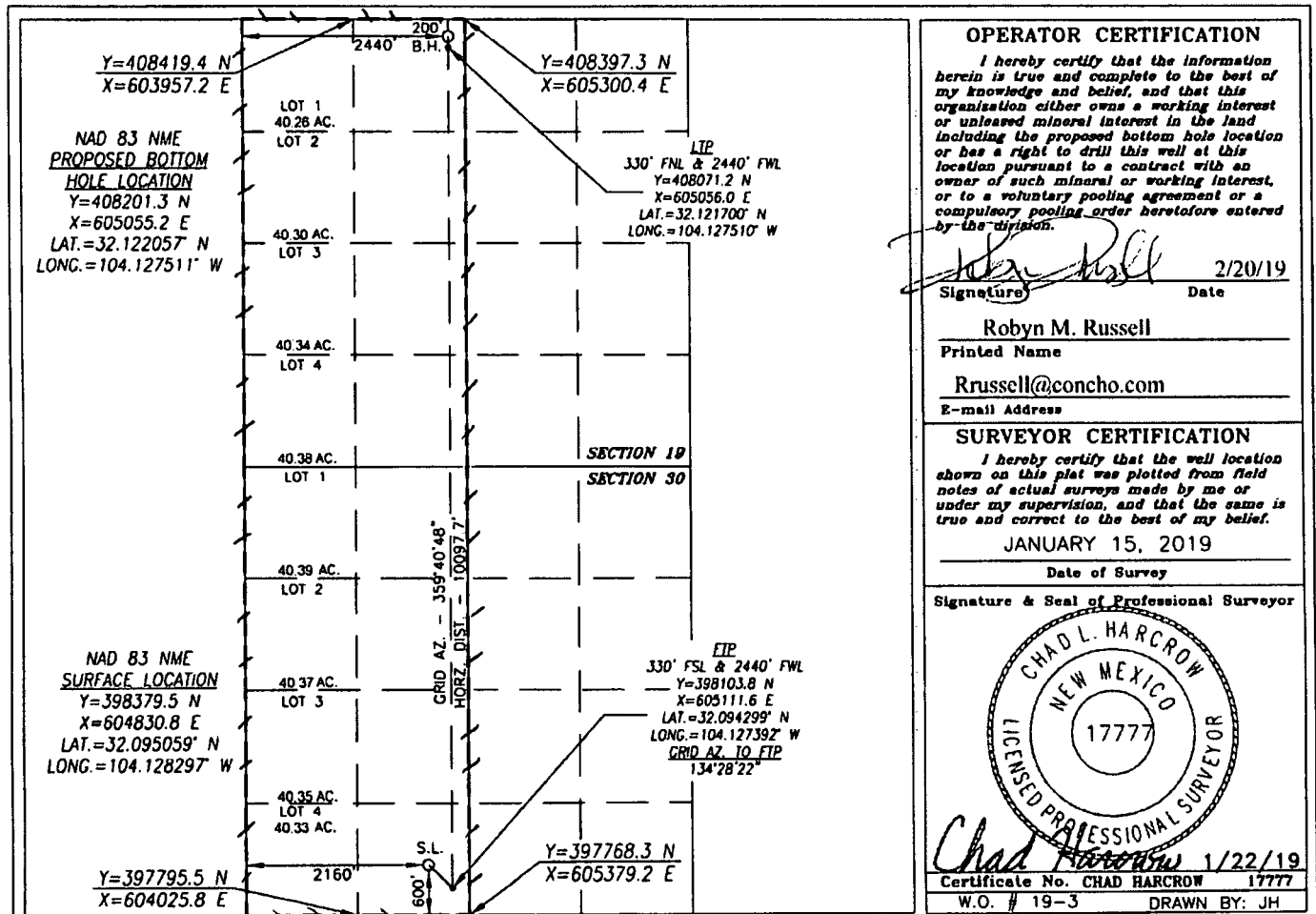
UL or lot No.	Section	Township	Range	Lot Idn	Feet from the	North/South line	Feet from the	East/West line	County
N	30	25-S	28-E		600	SOUTH	2160	WEST	EDDY

Bottom Hole Location If Different From Surface

UL or lot No.	Section	Township	Range	Lot Idn	Feet from the	North/South line	Feet from the	East/West line	County
C	19	25-S	28-E		200	NORTH	2440	WEST	EDDY

Dedicated Acres	Joint or Infill	Consolidation Code	Order No.
642.72			

**NO ALLOWABLE WILL BE ASSIGNED TO THIS COMPLETION UNTIL ALL INTERESTS HAVE BEEN CONSOLIDATED
OR A NON-STANDARD UNIT HAS BEEN APPROVED BY THE DIVISION**



RW 2-21-19

**NM OIL CONSERVATION
ARTESIA DISTRICT**

Intent ☒ As Drilled ☐

FEB 20 2019

API #

30-015-45752

RECEIVED

Operator Name:

COG Operating LLC

Property Name:

Myox 30 State Com

Well Number

801H

Kick Off Point (KOP)

UL	Section	Township	Range	Lot	Feet	From N/S	Feet	From E/W	County
N	30	25S	28E		600	FSL	2160	FWL	Eddy
Latitude					Longitude				NAD
32.095059					-104.128297				83

First Take Point (FTP)

UL	Section	Township	Range	Lot	Feet	From N/S	Feet	From E/W	County
N	30	25S	28E		330	FSL	2440	FWL	Eddy
Latitude					Longitude				NAD
32.094299					-104.127392				83

Last Take Point (LTP)

UL	Section	Township	Range	Lot	Feet	From N/S	Feet	From E/W	County
C	19	25S	28E		330	FNL	2440	FWL	Eddy
Latitude					Longitude				NAD
32.121700					-104.127510				83

Is this well the defining well for the Horizontal Spacing Unit?

☒ Y

Is this well an infill well?

☐ N

If infill is yes please provide API if available, Operator Name and well number for Defining well for Horizontal Spacing Unit.

API #

Operator Name:

Property Name:

Well Number

KZ 06/29/2018