

**NM OIL CONSERVATION
ARTESIA DISTRICT**

MAR 19 2019

Intent ☒ As Drilled ☐

API #
30-01545808

Operator Name: APACHE CORPORATION	Property Name: PALMILLO 10 STATE COM	Well Number 333H
--------------------------------------	---	---------------------

RECEIVED

Kick Off Point (KOP)

UL I	Section 10	Township 19S	Range 28E	Lot	Feet 2192	From N/S S	Feet 100	From E/W E	County EDDY
Latitude 32.6740763					Longitude -104.1560544			NAD 83	

First Take Point (FTP)

UL I	Section 10	Township 19S	Range 28E	Lot	Feet 2192	From N/S S	Feet 100	From E/W E	County EDDY
Latitude 32.6740763					Longitude -104.1560544			NAD 83	

Last Take Point (LTP)

UL L	Section 10	Township 19S	Range 28E	Lot	Feet 2192	From N/S S	Feet 100	From E/W W	County EDDY
Latitude 32.6739450					Longitude -104.1722457			NAD 83	

Is this well the defining well for the Horizontal Spacing Unit? ☐

Is this well an infill well? ☐

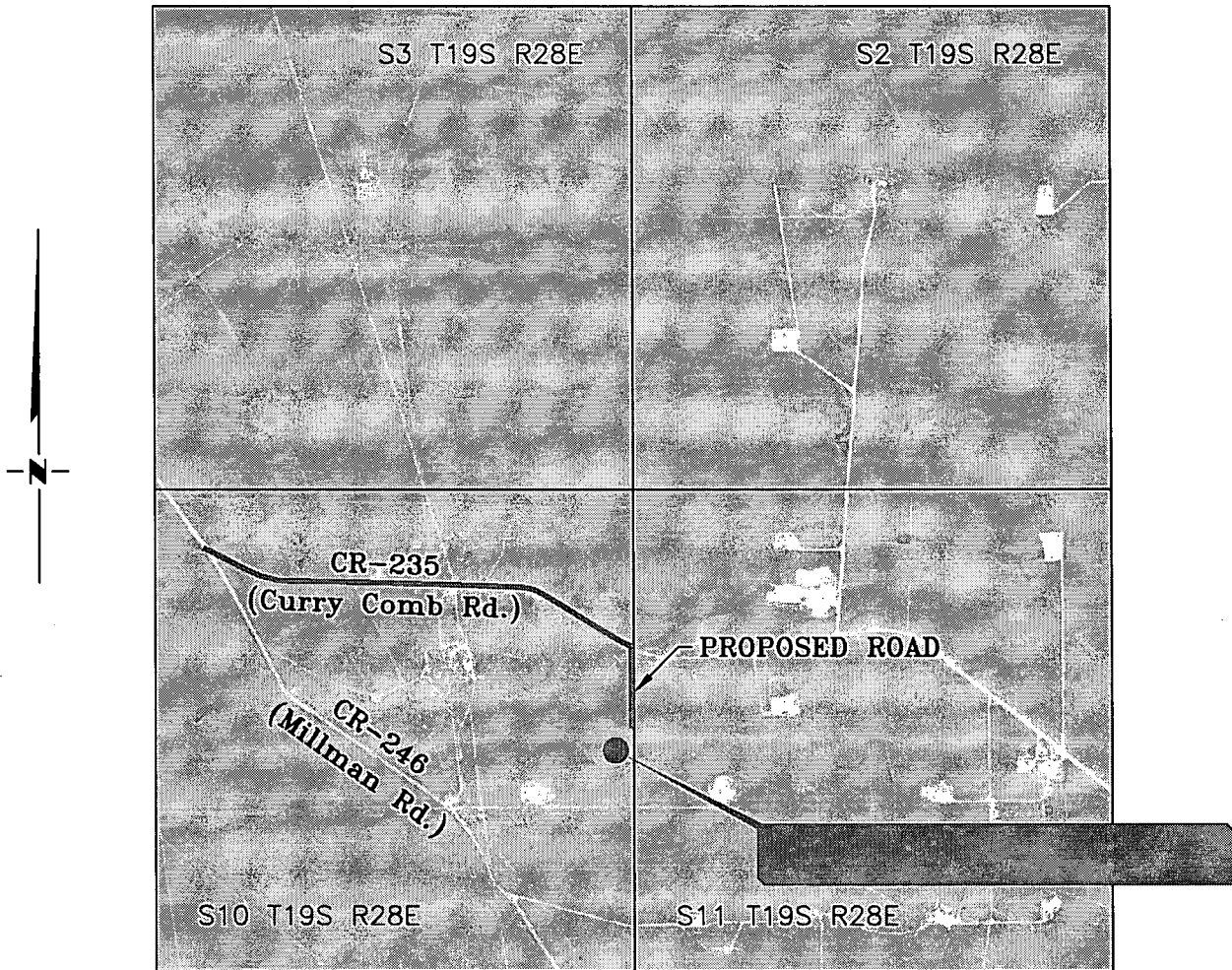
If infill is yes please provide API if available, Operator Name and well number for Defining well for Horizontal Spacing Unit.

API #	Operator Name:	Property Name:	Well Number

KZ 06/29/2018

VICINITY MAP

NOT TO SCALE



**SECTION 10, TWP. 19 SOUTH, RGE. 28 EAST,
N. M. P. M., EDDY COUNTY, NEW MEXICO**

OPERATOR: Apache Corporation
LEASE: Palmillo 10 State Com
WELL NO.: 333H

LOCATION: 2430' FSL & 180' FEL
ELEVATION: 3490'

Copyright 2018 - All Rights Reserved

DATE: 01-08-2018

NO.	REVISION	DATE
1		
2		
3		
4		

RRC

SURVEYING, LLC

701 S. CECIL ST., HOBBS, NM 88240 (575) 964-8200

SCALE: 1" = 2000'

SURVEYED BY: AB/RU

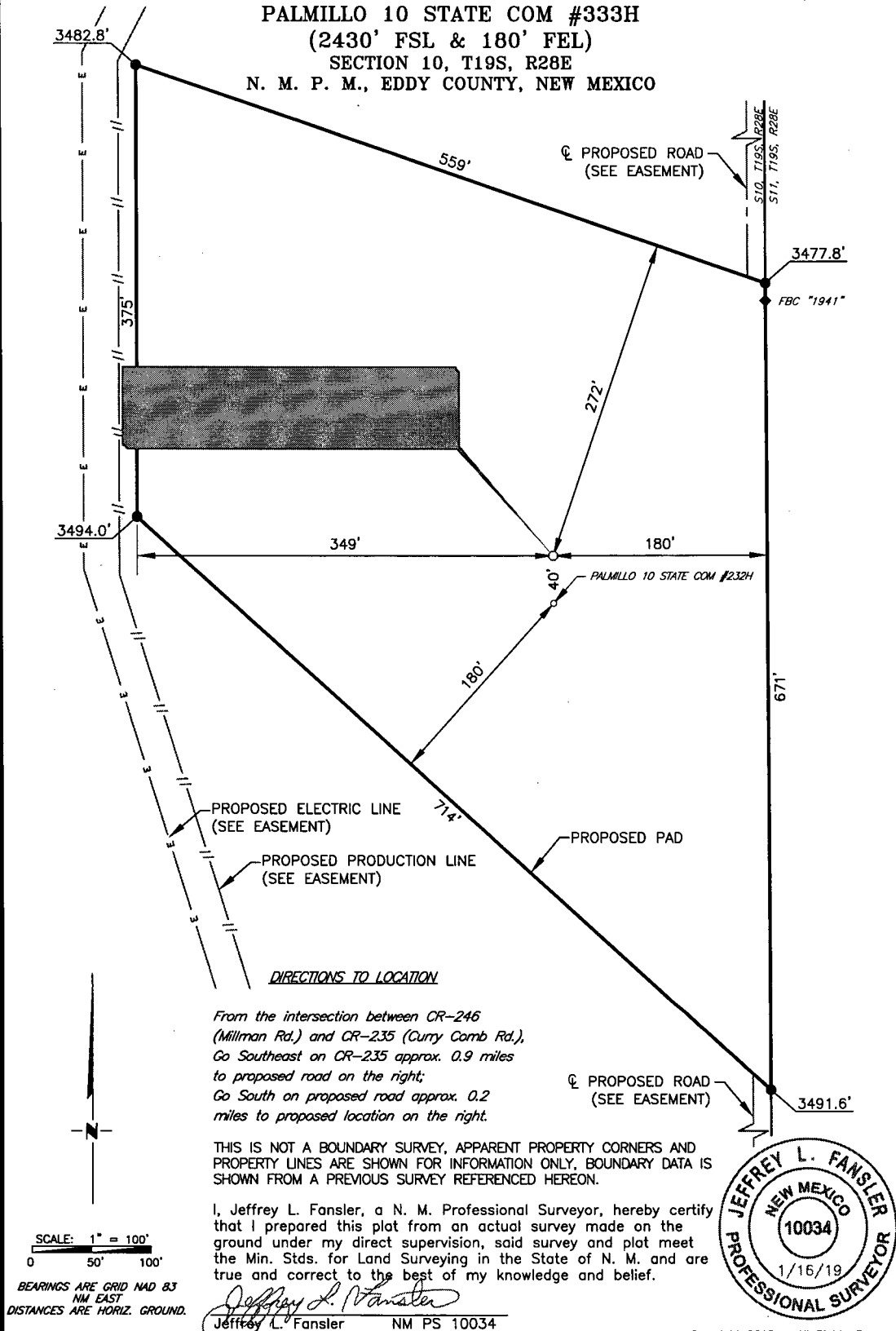
DRAWN BY: CAR

APPROVED BY: JLF

JOB NO.: LS18121352

SHEET: 333 VM

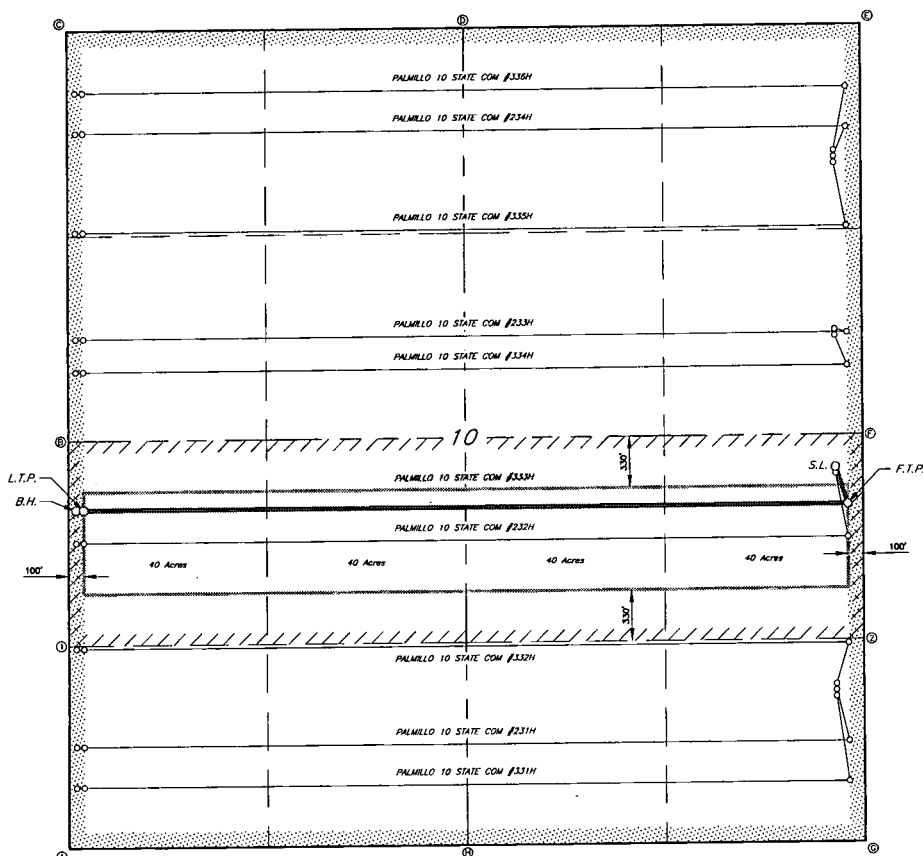
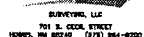
APACHE CORPORATION
PALMILLO 10 STATE COM #333H
(2430' FSL & 180' FEL)
SECTION 10, T19S, R28E
N. M. P. M., EDDY COUNTY, NEW MEXICO



DATE: 01-08-2018		
NO.	REVISION	DATE
1		
2		
3		
4		

RRC
 SURVEYING, LLC
 701 S. CECIL ST., HOBBS, NM 88240 (575) 964-8200

SCALE: 1" = 100'
SURVEYED BY: AB/RU
DRAWN BY: CAR
APPROVED BY: JLF
JOB NO.: LS18121352
SHEET: 333 - PAD



GEOGRAPHIC DATA
 NAD 83 GRID - NM EAST
 SURFACE LOCATION (S.L.)
 N 608242.6 - E 595805.3
 LAT:32.874282° N
 LONG:104.156315° W
 FIRST TAKE POINT (F.T.P.)
 N 609005.0 - E 595886.0
 LAT:32.674078° N
 LONG:104.156054° W
 LAST TAKE POINT (L.T.P.)
 N 608949.9 - E 590904.1
 LAT:32.673945° N
 LONG:104.172245° W
 BOTTOM HOLE (B.H.)
 N 609949.4 - E 590854.1
 LAT:32.673943° N
 LONG:104.172408° W

CORNER DATA
NAD 83 GRID - NM EAST

A: FOUND BRASS CAP "1941"
N 606757.3 - E 590806.4

B: FOUND BRASS CAP "1941"
N 609393.2 - E 590803.8

C: FOUND BRASS CAP "1941"
N 610229.5 - E 590800.8

D: FOUND BRASS CAP "1941"
N 612060.8 - E 593387.2

E: FOUND BRASS CAP "1911"
N 612093.1 - E 595974.2

F: FOUND BRASS CAP "1942"
N 609454.0 - E 595984.8

G: FOUND BRASS CAP "1941"
N 606815.2 - E 595993.1

H: FOUND BRASS CAP "1941"
N 606785.9 - E 593400.0

CALCULATED POINTS

N 608075.2 - E 590805.0
N 608134.6 - E 595988.8

Copyright 2018 All Rights Reserved

APACHE CORPORATION

LEASE AREA FOR THE
PALMILLO 10 STATE COM #333H
SECTION 10, T19S, R28E
EDDY COUNTY, NEW MEXICO

SCALE: 1"=600'	SURVEYED BY: AB/RU	JOB No.: LS18121352
DATE: 01-08-2018	DRAWN BY: CAR	DWG: 333 LEASE
REV:	APPROVED BY: JLF	SHEET: 1 OF 1