

DISTRICT I  
1625 N. French Dr., Hobbs, NM 88240  
Phone: (575) 393-6161 Fax: (575) 393-0720

DISTRICT II  
811 S. First St., Artesia, NM 88210  
Phone: (575) 748-1283 Fax: (575) 748-9720

DISTRICT III  
1000 Rio Brazos Road, Aztec, NM 87419  
Phone: (505) 334-6178 Fax: (505) 334-4770

DISTRICT IV  
1220 S. St. Francis Dr., Santa Fe, NM 87505  
Phone: (505) 476-3460 Fax: (505) 476-3462

# NM OIL CONSERVATION

ARTESIA DISTRICT  
OCT 06 2017

State of New Mexico  
Energy, Minerals & Natural Resources Department

HOBBS, OCD

## OIL CONSERVATION DIVISION

1220 South St. Francis Dr.  
Santa Fe, New Mexico 87505

SEP 25 2017

RECEIVED

Form C-102

Revised August 1, 2011

Submit one copy to appropriate  
District Office

AMENDED REPORT

### WELL LOCATION AND ACREAGE DEDICATION PLAT

API Number 30-015-44063	Pool Code 98220	Pool Name Purple Sage; Wolfcamp
Property Code 314249	Property Name FOREHAND RANCH 22 STATE	Well Number 9H
OGRID No. 249099	Operator Name CAZA OPERATING, LLC	Elevation 3149'

#### Surface Location

UL or lot No.	Section	Township	Range	Lot Idn	Feet from the	North/South line	Feet from the	East/West line	County
K	22	23-S	27-E		2310	SOUTH	2030	WEST	EDDY

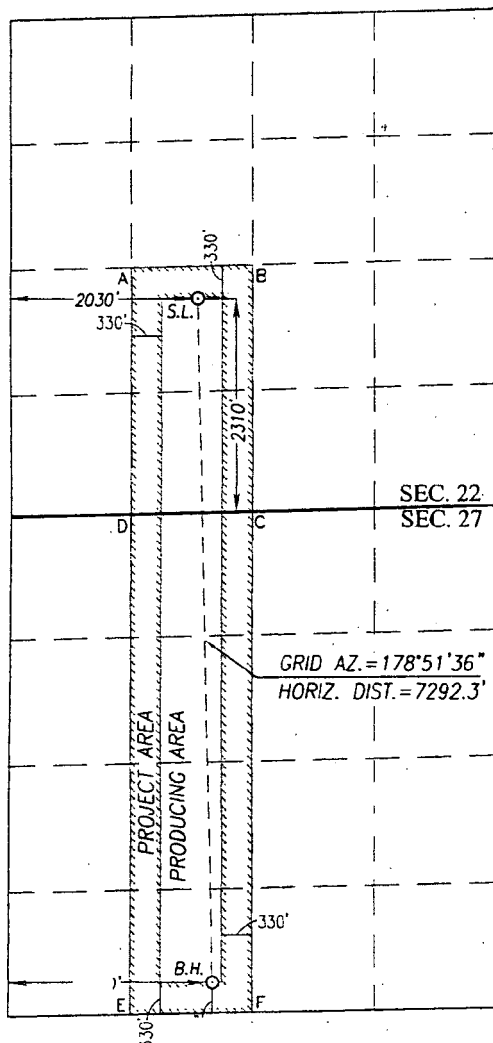
#### Bottom Hole Location If Different From Surface

UL or lot No.	Section	Township	Range	Lot Idn	Feet from the	North/South line	Feet from the	East/West line	County
N	27	23-S	27-E		338	SOUTH	887	WEST	EDDY

Dedicated Acres	Joint or Infill	Consolidation Code	Order No.
480			

NO ALLOWABLE WILL BE ASSIGNED TO THIS COMPLETION UNTIL ALL INTERESTS HAVE BEEN CONSOLIDATED OR A NON-STANDARD UNIT HAS BEEN APPROVED BY THE DIVISION

SCALE: 1"=2000'



GEODETIC COORDINATES  
NAD 83 NME  
SURFACE LOCATION  
Y= 469112.5 N  
X= 588742.9 E  
LAT.=32.289571° N  
LONG.=104.179923° W

GEODETIC COORDINATES  
NAD 27 NME  
SURFACE LOCATION  
Y= 469053.7 N  
X= 547560.6 E  
LAT.=32.289451° N  
LONG.=104.179424° W

BOTTOM HOLE LOCATION  
NAD 83 NME

Y=461824.33  
X=588888.17  
Lat=32.269536°N  
Long=104.179489°W

#### OPERATOR CERTIFICATION

I hereby certify that the information herein is true and complete to the best of my knowledge and belief, and that this organization either owns a working interest or unleased mineral interest in the land including the proposed bottom hole location or has a right to drill this well at this location pursuant to a contract with an owner of such mineral or working interest, or to a voluntary pooling agreement or a compulsory pooling order heretofore entered by the division.

Signature: *Steve Morris* Date: 09/22/2017

Printed Name: Steve Morris

E-mail Address: steve.morris@mojoenergy.com

#### SURVEYOR CERTIFICATION

I hereby certify that the well location shown on this plat was plotted from field notes of actual surveys made by me or under my supervision, and that the same is true and correct to the best of my belief.

FEBRUARY 6, 2017

Date of Survey  
Signature & Seal of Professional Surveyor:

*Ronald J. Eidson*  
RONALD J. EIDSON  
NEW MEXICO  
3239  
Certificate Number: Gary G. Eidson 12641  
Ronald J. Eidson 3239  
ACK REL. W.O.: 15111055 JWSC W.O.: 17.11.0071