

RECEIVED

District I
1625 N. French Dr., Hobbs, NM 88240
Phone: (575) 393-6161 Fax: (575) 393-0720
District II
811 S. First St., Artesia, NM 88210
Phone: (575) 748-1283 Fax: (575) 748-9720
District III
1000 Rio Brazos Road, Aztec, NM 87410
Phone: (505) 334-6178 Fax: (505) 334-6170
District IV
1220 S. St. Francis Dr., Santa Fe, NM 87505
Phone: (505) 476-3460 Fax: (505) 476-3462

State of New Mexico
Energy, Minerals & Natural Resources Department
OIL CONSERVATION DIVISION
1220 South St. Francis Dr.
Santa Fe, NM 87505

DISTRICT II-ARTESIA O.C.D.

Form C-102

Revised August 1, 2011

Submit one copy to appropriate

District Office

☐ AMENDED REPORT

WELL LOCATION AND ACREAGE DEDICATION PLAT

¹ API Number 30-015-46007	² Pool Code 96991	³ Pool Name Sand Dunes Wolfcamp
⁴ Property Code 322788	⁵ Property Name MALDIVES 15-22 FED COM	⁶ Well Number 711H
⁷ OGRID No. 6137	⁸ Operator Name DEVON ENERGY PRODUCTION COMPANY, L.P.	⁹ Elevation 3388.4

¹⁰ Surface Location

UL or lot no.	Section	Township	Range	Lot Idn	Feet from the	North/South line	Feet from the	East/West line	County
D	15	23 S	31 E		250	NORTH	510	WEST	EDDY

¹¹ Bottom Hole Location If Different From Surface

UL or lot no.	Section	Township	Range	Lot Idn	Feet from the	North/South line	Feet from the	East/West line	County
E	22	23 S	31 E		2350	NORTH	400	WEST	EDDY

¹² Dedicated Acres	¹³ Joint or Infill	¹⁴ Consolidation Code	¹⁵ Order No.
240			

No allowable will be assigned to this completion until all interests have been consolidated or a non-standard unit has been approved by the division.

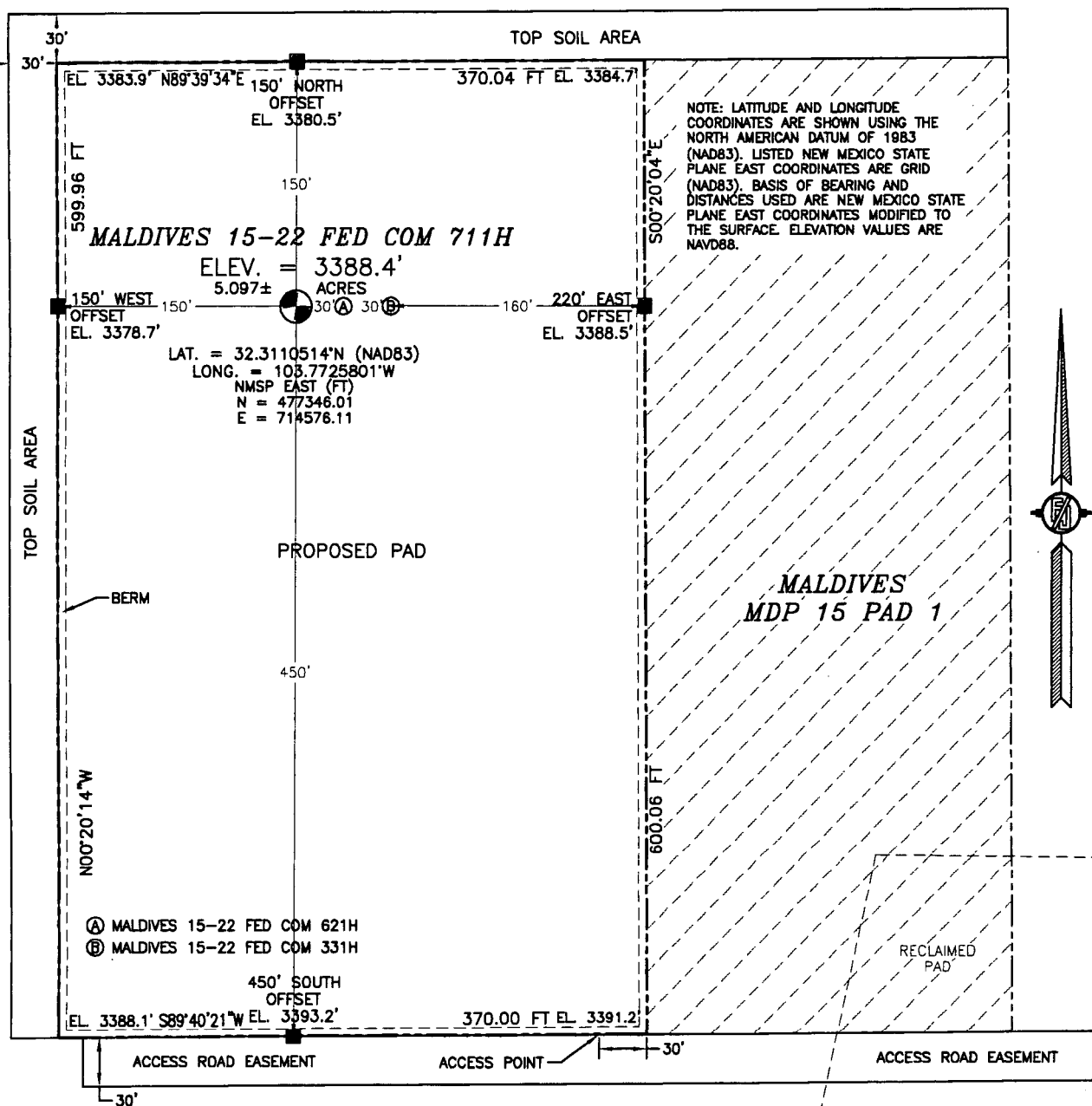
	<p>¹⁷ OPERATOR CERTIFICATION</p> <p>I hereby certify that the information contained herein is true and complete to the best of my knowledge and belief, and that this organization either owns a working interest or unleased mineral interest in the land including the proposed bottom hole location or has a right to drill this well at this location pursuant to a contract with an owner of such a mineral or working interest, or to a voluntary pooling agreement or a compulsory pooling order heretofore entered by the division.</p> <p>Signature: <u>Jenny Harms</u> Date: <u>8-10-2018</u></p> <p>Printed Name: <u>Jenny Harms</u></p> <p>E-mail Address: <u>Jenny.harms@dvn.com</u></p> <p>¹⁸ SURVEYOR CERTIFICATION</p> <p>I hereby certify that the well location shown on this plat was plotted from field notes of actual surveys made by me or under my supervision, and that the same is true and correct to the best of my belief.</p> <p>Date of Survey: <u>MAY 17, 2017</u></p> <p>Signature and Seal of Professional Surveyor: <u>PILIMON F. JARAMILLO</u></p> <p>Certificate Number: <u>PILIMON F. JARAMILLO, PLS 12797</u></p> <p>SURVEY NO. 5234</p>
--	---

KOP: 50 FNL, 399 FWL, 15-23S-31E, LAT: 32.311601, LONG: -103.772936
 1ST TAKE POINT: 330 FNL, 400 FWL, 15-23S-31E, LAT: 32.310877, LONG: -103.772936
 LAST TAKE POINT: 2250 FNL, 400 FWL, 22-23S-31E, LAT: 32.291314, LONG: -103.772936

WELL: DEFINING

Rw 5-20-19

**SECTION 15, TOWNSHIP 23 SOUTH, RANGE 31 EAST, N.M.P.M.
EDDY COUNTY, STATE OF NEW MEXICO
SITE MAP**



0 10 50 100 200

SCALE 1" = 100'

DIRECTIONS TO LOCATION

FROM STATE HWY. 128 & CR. 798 (RED ROAD) GO NORTH ON RED ROAD 2.2 MILES, TURN LEFT ON CALICHE ROAD AND GO NORTHWEST 1.8 MILES, TURN RIGHT AND GO NORTH 0.6 MILE, TURN LEFT AND GO WEST 0.25 MILE, TURN RIGHT AND GO NORTH 0.25 MILE, TO THE TODD 15C FED 3 WELL FROM SOUTHWEST EDGE OF PAD FOLLOW FLAGS WEST-SOUTHWEST 72' TO THE SOUTHEAST CORNER OF PAD 2, THEN FOLLOW FLAGS WEST 1110' TO THE SOUTHEAST CORNER OF PAD FOR THIS LOCATION.

DEVON ENERGY PRODUCTION COMPANY, L.P.
MALDIVES 15-22 FED COM 711H
LOCATED 250 FT. FROM THE NORTH LINE
AND 510 FT. FROM THE WEST LINE OF
SECTION 15, TOWNSHIP 23 SOUTH,
RANGE 31 EAST, N.M.P.M.
EDDY COUNTY, STATE OF NEW MEXICO

MAY 17, 2017

SURVEY NO. 5234

MADRON SURVEYING, INC. 301 SOUTH CANAL (575) 234-3341 **CARLSBAD, NEW MEXICO**