

District I
1625 N. French Dr., Hobbs, NM 88240
Phone: (575) 393-6161 Fax: (575) 393-0720
District II
811 S. First St., Artesia, NM 88210
Phone: (575) 748-1283 Fax: (575) 748-9720
District III
1000 Rio Brazos Road, Aztec, NM 87401
Phone: (505) 334-6178 Fax: (505) 334-6170
District IV
1220 S. St. Francis Dr., Santa Fe, NM 87505
Phone: (505) 476-3460 Fax: (505) 476-3462

State of New Mexico

Energy, Minerals & Natural Resources Department

OIL CONSERVATION DIVISION

1220 South St. Francis Dr.

Santa Fe, NM 87505

DISTRICT II-ARTESIA O.C.D.

☐ AMENDED REPORT

RECEIVED

Form C-102

Revised August 1, 2011

Submit one copy to appropriate

District Office

RECEIVED
MAY 17 2019
HOBBS CO.

WELL LOCATION AND ACREAGE DEDICATION PLAT AS-DRILLED PLAT

¹ API Number 30-015 43648	² Pool Code 97650	³ Pool Name WC WILLIAMS SINK; BONE SPRINGS
⁴ Property Code 40250	⁵ Property Name BIG EDDY UNIT DI 2	⁶ Well Number 323H
⁷ OGRID No. 260737	⁸ Operator Name XTO PERMIAN OPERATING, LLC.	⁹ Elevation 3,469'

¹⁰ Surface Location

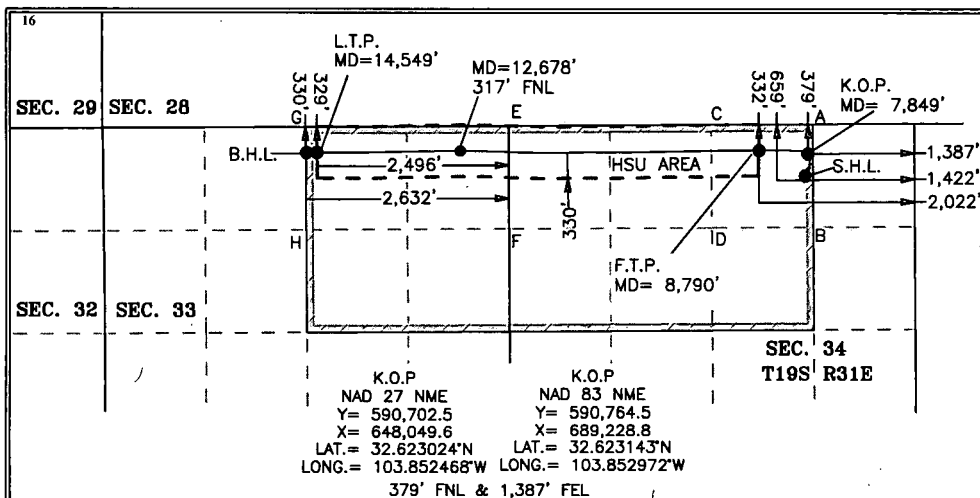
UL or lot no.	Section	Township	Range	Lot Idn	Feet from the	North/South line	Feet from the	East/West line	County
B	34	19 S	31 E		659'	NORTH	1,422'	EAST	EDDY

¹¹ Bottom Hole Location If Different From Surface

UL or lot no.	Section	Township	Range	Lot Idn	Feet from the	North/South line	Feet from the	East/West line	County
B	33	19 S	31 E		330'	NORTH	2,632'	EAST	EDDY

¹² Dedicated Acres 400	¹³ Joint or Infill	¹⁴ Consolidation Code	¹⁵ Order No.
--------------------------------------	-------------------------------	----------------------------------	-------------------------

No allowable will be assigned to this completion until all interests have been consolidated or a non-standard unit has been approved by the division.
NOTE: AS-DRILLED BOTTOM HOLE PLOTTED FROM DATA FURNISHED BY XTO ENERGY



¹⁷ OPERATOR CERTIFICATION

I hereby certify that the information contained herein is true and complete to the best of my knowledge and belief, and that this organization either owns a working interest or unleased mineral interest in the land including the proposed bottom hole location or has a right to drill this well at this location pursuant to a contract with an owner of such a mineral or working interest, or to a voluntary pooling agreement or a compulsory pooling order heretofore entered by the division.

Signature: Cheryl Rowell Date: 04/09/219

Printed Name: Cheryl Rowell

E-mail Address: cheryl_rowell@xtoenergy.com

¹⁸ SURVEYOR CERTIFICATION

I hereby certify that the well location shown on this plat was plotted from field notes of actual surveys made by me or under my supervision, and that the same is true and correct to the best of my belief.

Date of Survey: 4-9-2019

Signature and Seal of Professional Surveyor:

MARK DILLON HARP 23786
Certificate Number



IC 2018040910

GEODETIC COORDINATES

NAD 27 NME
SURFACE LOCATION
Y= 590,421.8
X= 648,016.0
LAT.= 32.62253°N
LONG.= 103.852582°W

FIRST TAKE POINT
NAD 27 NME
Y= 590,746.0
X= 647,414.1
LAT.= 32.623152°N
LONG.= 103.854532°W

LAST TAKE POINT
NAD 27 NME
Y= 590,715.7
X= 641,658.8
LAT.= 32.623138°N
LONG.= 103.873225°W

BOTTOM HOLE LOCATION
NAD 27 NME
Y= 590,714.2
X= 641,522.5
LAT.= 32.623136°N
LONG.= 103.873667°W

GEODETIC COORDINATES

NAD 83 NME
SURFACE LOCATION
Y= 590,483.8
X= 689,195.2
LAT.= 32.622372°N
LONG.= 103.853085°W

FIRST TAKE POINT
NAD 83 NME
Y= 590,808.0
X= 688,593.3
LAT.= 32.623270°N
LONG.= 103.855035°W

LAST TAKE POINT
NAD 83 NME
Y= 590,777.7
X= 682,838.0
LAT.= 32.623257°N
LONG.= 103.873728°W

BOTTOM HOLE LOCATION
NAD 83 NME
Y= 590,776.2
X= 685,340.7
LAT.= 32.623255°N
LONG.= 103.874171°W

CORNER COORDINATES TABLE

NAD 27 NME

A - Y= 591,081.7 N, X= 648,110.1 E
B - Y= 589,762.1 N, X= 648,120.4 E
C - Y= 591,073.9 N, X= 646,789.3 E
D - Y= 589,754.2 N, X= 646,799.5 E
E - Y= 591,058.5 N, X= 644,152.6 E
F - Y= 589,738.6 N, X= 644,161.5 E
G - Y= 591,044.2 N, X= 641,511.8 E
H - Y= 589,723.1 N, X= 641,521.3 E

CORNER COORDINATES TABLE

NAD 83 NME

A - Y= 591,143.7 N, X= 689,289.3 E
B - Y= 589,824.1 N, X= 689,299.6 E
C - Y= 591,135.9 N, X= 687,968.5 E
D - Y= 589,816.2 N, X= 687,978.7 E
E - Y= 591,120.5 N, X= 685,331.8 E
F - Y= 589,800.6 N, X= 685,340.7 E
G - Y= 591,106.2 N, X= 682,690.9 E
H - Y= 589,785.1 N, X= 682,700.5 E