

District I
1625 N. French Dr., Hobbs, NM 88240
Phone: (575) 393-0161 Fax: (575) 393-0720

District II
811 S. First St., Artesia, NM 88210
Phone: (575) 748-1283 Fax: (575) 748-9720

District III
1000 Rio Brazos Road, Aztec, NM 87410
Phone: (505) 334-6178 Fax: (505) 334-6170

District IV
1220 S. St. Francis Dr., Santa Fe, NM 87505
Phone: (505) 476-3460 Fax: (505) 476-3462

State of New Mexico

RECEIVED

Form C-101
Revised July 18, 2013

Energy Minerals and Natural Resources

Oil Conservation Division MAY 22 2019

☐ AMENDED REPORT

1220 South St. Francis Dr.
DISTRICT II-ARTESIA O.G.D.
Santa Fe, NM 87505

APPLICATION FOR PERMIT TO DRILL, RE-ENTER, DEEPEN, PLUGBACK, OR ADD A ZONE

¹ Operator Name and Address Fasken Oil and Ranch, Ltd. 6101 Holiday Hill Road Midland, TX 79707		² OGRID Number 151416
		³ API Number 30-015-34535
⁴ Property Code 18243	⁵ Property Name State "32" Com	⁶ Well No. 3

⁷ Surface Location

UL - Lot	Section	Township	Range	Lot Idn	Feet from	N/S Line	Feet From	E/W Line	County
11F	32	20S	25E		1980	North	1980	West	Eddy

⁸ Proposed Bottom Hole Location

UL - Lot	Section	Township	Range	Lot Idn	Feet from	N/S Line	Feet From	E/W Line	County

⁹ Pool Information

Pool Name Cemetery: Wolfcamp (Gas)	Pool Code 74680
---------------------------------------	--------------------

Additional Well Information

¹¹ Work Type P	¹² Well Type G	¹³ Cable/Rotary R	¹⁴ Lease Type S	¹⁵ Ground Level Elevation 3618'
¹⁶ Multiple N	¹⁷ Proposed Depth 8557'	¹⁸ Formation Wolfcamp	¹⁹ Contractor unknown	²⁰ Spud Date 2/1/06
Depth to Ground water 183'	Distance from nearest fresh water well 2000'	Distance to nearest surface water greater than 1 mile		

☒ We will be using a closed-loop system in lieu of lined pits

²¹ Proposed Casing and Cement Program

Type	Hole Size	Casing Size	Casing Weight/ft	Setting Depth	Sacks of Cement	Estimated TOC
	17 1/2	13 3/8	48	403	760	
	12 1/4	9 5/8	36	2988	800	
	8 3/4	4 1/2	11.6	9701	1000	

Casing/Cement Program: Additional Comments

--

²² Proposed Blowout Prevention Program

Type	Working Pressure	Test Pressure	Manufacturer

²³ I hereby certify that the information given above is true and complete to the best of my knowledge and belief.

I further certify that I have complied with 19.15.14.9 (A) NMAC ☒ and/or 19.15.14.9 (B) NMAC ☐ if applicable.

Signature: *Addison Guelker*

Printed name: Addison Guelker

Title: Regulatory Analyst

E-mail Address: addisong@forl.com

Date: 5/20/19

Phone: 432-687-1777

OIL CONSERVATION DIVISION

Approved By:

Raymond J. Pooling

Title: *Geologist*

Approved Date: 5-23-19

Expiration Date: 5-23-21

Conditions of Approval Attached

State "32" Com No. 3

Proposed Wolfcamp 9-19-18

GL: 3618'

KB: 3635.5'

Operator: **Fasken Oil and Ranch, Ltd.**

Location: 1980' FNL and 1980' FWL

Sec 32, T20S, R25E

Eddy County, NM

Compl.: 03/28/2006 released rig

API #: 30-015-34535

TD: 9700'

PBTD: 9,653' (FC 9653' did not bmp plg)

Fill: 9480' by WL after frac

Casing: 13-3/8" 48# H-40 @ 403.30'

w/200 sx "C"+10%CaCl2

+400 sx "C" w/2% CaCl2+

1"w/9 plgs tot 160sx+2yd3 ready mix

TOC surf

9-5/8" 36# J-55 @ 2988.48' KB

w/600sx "C" w/4%gel+200sx "C"

TOC surf

4-1/2" 11.6# N-80 LT&C@ 9,701.09'

1000 sx Howco Super "H" (13.2ppg, 1.60ft³/sk)

TOC 5800' by Temp, Primary cmt

Tubing: 2-3/8" collar 0.40

Proposed 2-3/8"x8' EUE 8rd N-80 tbg sub 8.08

4-1/2" Arrowset IX 10k w/ 6.46

AJL: 3-3/4"x1.87" "F" PN and TOSSD 1.70

32.50 216 jts 2-3/8" EUE 8rd N-80 tbg 7019.18

Total 7035.82

KB 14.50

Slackoff and tool stroke -3.50

EOT 7046.82

Wolfcamp 7128'-30'; 7150'-72'; 7190'-7200'

Plug3 7267'-7640' 25 sx "C"

CIBP 7640', tubing set

Canyon 7692'-98' (13h, 2spf, 0.23") 9/11/2018

Plug2 8557'-8855' 25 sx "H"

CIBP 8855', tubing set 9/7/2018

2/27/2008 Cleaned out frac sand from 9517'-9653' w/foam unit

Atoka: 8914'-18' 1jspf 2/6/2010

9010'-23' 1jspf 2/6/2010

Plug2 9272'-9345' 25 sx "H", Tagged 9/6/2018

CIBP 9345', tubing set 9/5/2018

Frac plg Rptd 9350' 4-1/2" 10k, flow thru 2/4/2010

Morrow: 9406'-14' 2jspf, 16h, 0.42" EHD 5/5/2006

9417'-21' 2jspf, 8h, 0.42" EHD 5/5/2006

9437'-40' 2jspf, 6h, 0.42" EHD 5/5/2006

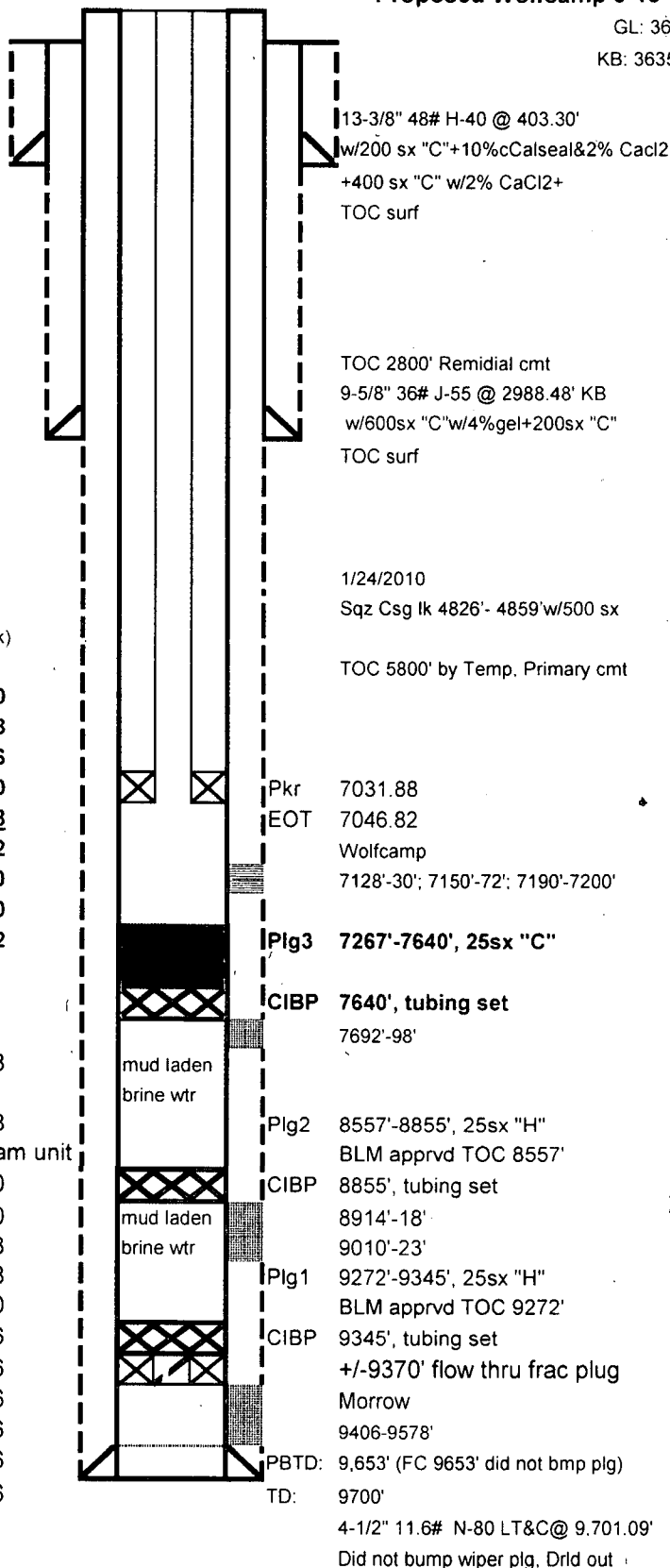
9518'-24' 2jspf, 12h, 0.42" EHD 5/5/2006

9574'-78' 4jspf, 16h, 0.42" EHD 5/5/2006

9574'-78' 2jspf, 8h 4/26/2006

Hole Sizes 17-1/2" 418', 12-1/4" 2990', 8-3/4" 9700'

Well shutin



cwb

9/19/2018

State 32 Com 3 wb diagram.xls

State "32" Com No. 3

Current as of 9-11-18

GL: 3618'

KB: 3635.5'

Operator: **Fasken Oil and Ranch, Ltd.**

Location: 1980' FNL and 1980' FWL

Sec 32, T20S, R25E

Eddy County, NM

Compl.: 03/28/2006 released rig

API #: 30-015-34535

TD: 9700'

PBTD: 8,557' (CIBP@8855' w/25 sx "H" cmt)

Fill: 9480' by WL after frac

Casing: 13-3/8" 48# H-40 @ 403.30'

w/200 sx "C"+10%CaCl2

+400 sx "C" w/2% CaCl2+

1"w/9 plgs tot 160sx+2yd3 ready mix

TOC surf

9-5/8" 36# J-55 @ 2988.48' KB

w/600sx "C" w/4%gel+200sx "C"

TOC surf

4-1/2" 11.6# N-80 LT&C@ 9,701.09'

1000 sx Howco Super "H" (13.2ppg, 1.60ft³/sk)

TOC 5800' by Temp, Primary cmt

Tubing: 2-3/8" collar 0.40

9/10/2018 2-3/8"x8" EUE 8rd N-80 tbg sub 8.08

4-1/2" Arrowset IX 10k w/ 6.46

AJL: 3-3/4"x1.87" "F" PN and TOSSD 1.70

32.50 233 jts 2-3/8" EUE 8rd N-80 tbg 7571.62

Total 7588.26

KB 14.50

Slackoff and tool stroke -4.12

EOT 7598.64

Canyon 7692'-98' (13h, 2spf, 0.23") 9/11/2018

Plug2 8557'-8855' 25 sx "H"

CIBP 8855', tubing set 9/7/2018

2/27/2008 Cleaned out frac sand from 9517'-9653' w/foam unit

Atoka: 8914'-18' 1jspf 2/6/2010

9010'-23' 1jspf 2/6/2010

Plug2 9272'-9345' 25 sx "H", Tagged 9/6/2018

CIBP 9345', tubing set 9/5/2018

Frac plg Rptd 9350' 4-1/2" 10k, flow thru 2/4/2010

Morrow: 9406'-14' 2jspf, 16h, 0.42" EHD 5/5/2006

9417'-21' 2jspf, 8h, 0.42" EHD 5/5/2006

9437'-40' 2jspf, 6h, 0.42" EHD 5/5/2006

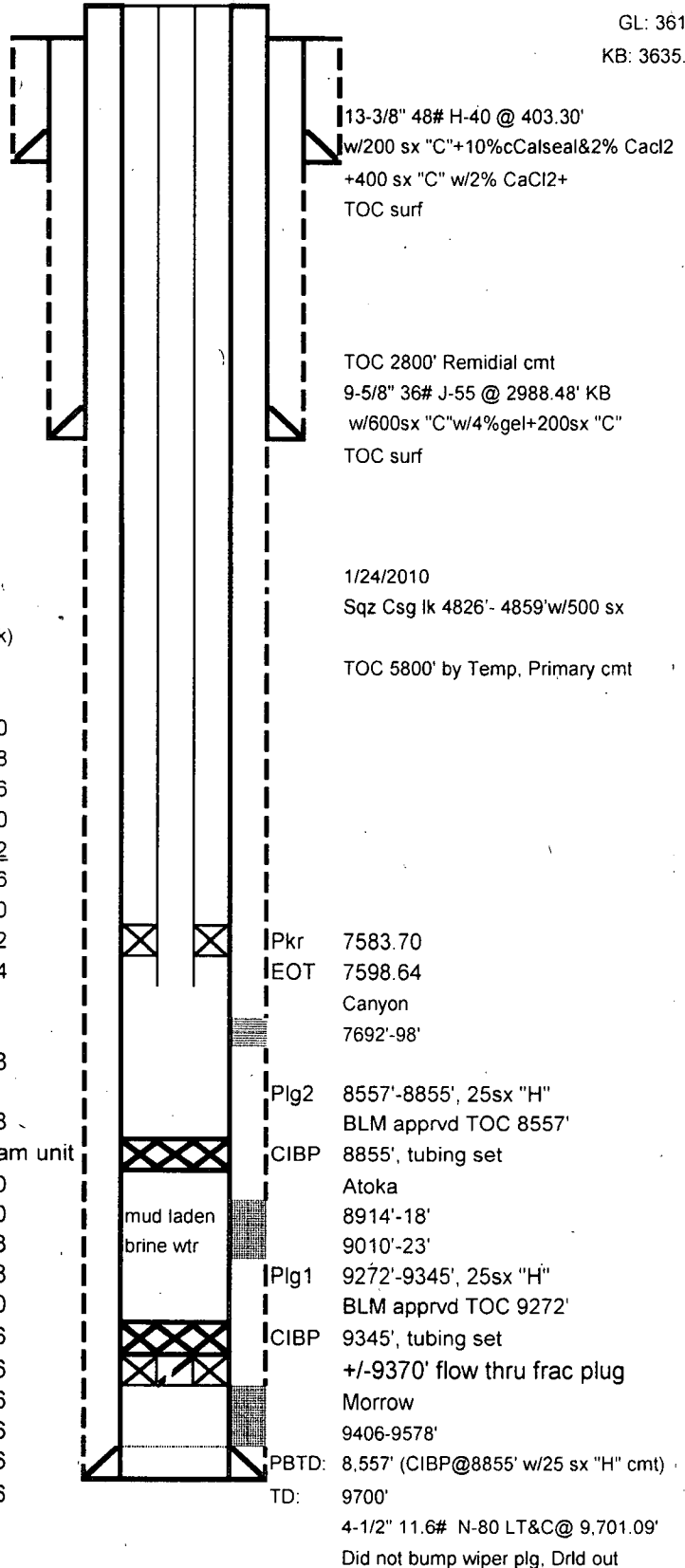
9518'-24' 2jspf, 12h, 0.42" EHD 5/5/2006

9574'-78' 4jspf, 16h, 0.42" EHD 5/5/2006

9574'-78' 2jspf, 8h 4/26/2006

Hole Sizes 17-1/2" 418', 12-1/4" 2990', 8-3/4" 9700'

Well shutin



cwb

9/19/2018

State 32 Com 3 wb diagram.xls

State "32" Com No. 3
1980' FNL & 1980' FWL
Sec 32, T20S R25E

OBJECTIVE:		Plug Back to Wolfcamp
WELL DATA:		
API Number:	30-015-34535	
13-3/8" 48#/ft H-40 ST&C casing:	Set at 403.30' KB Cmt w/600 sx "C"+1" w/9 plugs tot-160 sx+2 cu yds ready mix Cement at surface	
9-5/8" 36.0#/ft J-55 LT&C casing:	Set at 2988.48' KB, Cmt w/ 600 sx "C" w/4% gel+200 sx "C" w/2% CaCl ₂ , circ 122 sx to surf	
4-1/2" 11.6# N-80 LT&C casing:	Set at 9,701.09' Cmt w/1000 sx Howco Super "C" Did not bump plug. WL dept PBTD 9675', TOC 5800' by temp survey	
Casing Leak:	Marker jts 11.00 @ 9,295.74', 11.20' @ 8,480.65'	
	Sqz 1-24-10 4686'-59' w/350' sx 65/35/"C" + 150 sx "C" neat TOC 2800'	
Perforations:	Canyon 9-11-18: 7692'-98' (13h) 2spf 0.23' EHD)	
	Atoka and Morrow down hole commingled 2009	
	Atoka 2-6-10: 8914'-18' (5h), 9010'-23' (14h)	
	Frac plug 2-4-10: 4-1/2" 10k flow thru "reported" at 9350' valve	
	Depth is probably +/-9370' (EOT current Tbg tally is 9364' KB)	
	Morrow 5-5-06: 9406'-14' (16h), 9417'-21' (8h), 9437'-40' (6h), 9518'-24' (12h), 9574'-78' (24h)	
	Morrow 4-26-06 9574'-78' (9h)	
Tubing 2-6-10	2-3/8" EUE 8rd coupling (0.40'), 2-3/8"x8' EUE 8rd N-80 tbg sub (8.08'), 4-1/2" Arrowset IX 10k packer (6.46'), w/1.87" "F" profile TOSSD (1.70'), 233 jts 2-3/8" EUE 8rd N-80 tubing (7571.62')	
	EOT 7598.64' KB	
TD:	9:700'	
PBTD:	8,557' (CIBP @ 8855' w/25 sx "H" cmt tagged 8557'	
Status:	Well shut in	

1. Set test tank and lay flowline.
2. RUPU.
3. RU pump truck and kill well w/ 30 bbls 2% KCL w/corrosion inhibitor, biocide, and oxygen scavenger.
4. NDWH, NU BOP.
5. Release packer, 233 jts 2-3/8" EUE 8rd N-80 tubing (7571.62'), 4-1/2" Arrowset IX 10 k packer (6.46'), w/1.87" "F" profile, TOSSD (1.70'), 2-3/8" x 8' EUE 8rd N-80 tbg sub (8.08'), 2-3/8" EUE 8rd coupling (0.40').
6. RIW with 4-1/2" CIBP with setting tool, 2-3/8" drain nipple, 4' perforated sub, 2-3/8 EUE 8rd 4.7#/ft N-80 tubing, and set CIBP at +/-7640' (minimum 50' above top perforation at 9406').
7. RU cement pump and establish circulation with fresh water and pump 25 sx class "C" cement (1.32 cuft/sk yield) above CIBP 7640' for a PBTD of 7267'. Displace cement with fresh water. POW 10 stands and WOC 4 hours and tag plug at 7267'.
8. POW 2-3/8" EUE 8rd 4.7#/ft N-80 tubing, PS, drain nipple, and setting tool, laying down about 17 joints of tubing.
9. RIW with 2-3/8" EUE 8rd WL entry guide, 2-3/8"x10' EUE 8rd N-80 tubing sub, Arrowset IX 10k packer, TOSSD with 1.87" "F" profile nipple, about 216 joints 2-3/8" EUE 8rd 4.7#/ft N-80 tubing to and set packer at +/- 7030'.
10. Release TOSSD and circulate well with 2% KCL water w/corrosion inhibitor, biocide, and oxygen scavenger.

11. ND BOP. NUWH double valve flow tree, setting packer in 12 points compression.
12. Swab tubing volume to 6000' from surface.
13. RUWL with 3000 psi lubricator and grease. Perforate Wolfcamp zone with 1-11/16" Gamma strip gun bottom up as follows:

7190' – 7200' (21h, 2JSPP)

7150' – 72' (45h, 2JSPP)

7128' – 30' (4h, 2JSPP)

70 total holes by Baker Hughes Compensated density neutron Gamma Ray Log dated 21 May 2006. POW, checking that all shots fired, and RDWL.

14. Flow test, swab and evaluate fluid entry.
15. If stimulation necessary, RU tree saver. RU pumping service. Trap 500 psi on annulus. Acidize Wolfcamp perms 7128'-7200' (70h) via 2-3/8" tubing with 2100 gal 15% NEFE HCL acid dropping 70 ball sealers evenly spaced after the first 500 gal. Rate 2-4 bpm at max pressure 6000 psi. RD stimulation service.
16. Swab and flow back acid and load water to steel test tank and evaluate.
17. Flow well and evaluate.
18. Return well to sales.
19. RDPU.

(State32Com#3_ afe3768_Rec-to Wlfc pro cwb_NH 9-19-18.doc)