

District I  
1625 N. French Dr., Hobbs, NM 88240  
District II  
1301 W. Grand Avenue, Artesia, NM 88210  
District III  
1000 Rio Brazos Road, Aztec, NM 87410  
District IV  
1220 S. St. Francis Dr., Santa Fe, NM 87505

State of New Mexico  
Energy Minerals and Natural Resources

Form C-101  
May 27, 2004

Oil Conservation Division  
1220 South St. Francis Dr.  
Santa Fe, NM 87505

Submit to appropriate District Office

☐ AMENDED REPORT

**APPLICATION FOR PERMIT TO DRILL, RE-ENTER, DEEPEN, PLUGBACK, OR ADD A ZONE**

|  |  |   |  |
|--|--|---|--|
| <sup>1</sup> Operator Name and Address<br><b>BOLD ENERGY, LP<br/>415 West Wall, Suite 500<br/>Midland, Texas 79701</b> |  | <sup>2</sup> OGRID Number<br><b>233545</b>        |  |
| <sup>3</sup> Property Code<br><b>301827</b>  |  | <sup>4</sup> API Number<br><b>30 - 15 - 20464</b> |  |
| <sup>5</sup> Property Name<br><b>GoPoGo</b>  |  | <sup>6</sup> Well No<br><b>2</b>                  |  |
| <sup>9</sup> Proposed Pool 1<br><b>Carlsbad; Wolfcamp, South (Gas)</b>   |  | <sup>10</sup> Proposed Pool 2                     |  |

**7 Surface Location**

|                           |                      |                        |                     |         |                              |                                  |                              |                               |                       |
|---------------------------|----------------------|------------------------|---------------------|---------|------------------------------|----------------------------------|------------------------------|-------------------------------|-----------------------|
| UL or lot no.<br><b>G</b> | Section<br><b>24</b> | Township<br><b>22S</b> | Range<br><b>26E</b> | Lot Idn | Feet from the<br><b>1980</b> | North/South line<br><b>North</b> | Feet from the<br><b>1980</b> | East/West line<br><b>East</b> | County<br><b>Eddy</b> |
|---------------------------|----------------------|------------------------|---------------------|---------|------------------------------|----------------------------------|------------------------------|-------------------------------|-----------------------|

**8 Proposed Bottom Hole Location If Different From Surface**

|               |         |          |       |         |               |                  |               |                |        |
|---------------|---------|----------|-------|---------|---------------|------------------|---------------|----------------|--------|
| UL or lot no. | Section | Township | Range | Lot Idn | Feet from the | North/South line | Feet from the | East/West line | County |
|---------------|---------|----------|-------|---------|---------------|------------------|---------------|----------------|--------|

**Additional Well Information**

|  |  |  |  |  |
|--|--|--|--|--|
| <sup>11</sup> Work Type Code<br><b>P</b>   | <sup>12</sup> Well Type Code<br><b>G</b>         | <sup>13</sup> Cable/Rotary                 | <sup>14</sup> Lease Type Code<br><b>P</b>              | <sup>15</sup> Ground Level Elevation<br><b>3162'</b>       |
| <sup>16</sup> Multiple<br><b>N</b>   | <sup>17</sup> Proposed Depth<br><b>9100' PBD</b> | <sup>18</sup> Formation<br><b>Wolfcamp</b> | <sup>19</sup> Contractor<br><b>Nabors Well Service</b> | <sup>20</sup> Spud Date<br><b>ASAP after Permits Rec'd</b> |
| Depth to Groundwater   |  | Distance from nearest fresh water well     |  | Distance from nearest surface water                        |
| Pit: Liner: Synthetic <input type="checkbox"/> _____ mils thick Clay <input type="checkbox"/> Pit Volume: _____ bbls Drilling Method: _____  |  |  |  |  |
| Closed-Loop System <input type="checkbox"/> <b>No Earthen Pits Will Be Used</b> Fresh Water <input type="checkbox"/> Brine <input type="checkbox"/> Diesel/Oil-based <input type="checkbox"/> Gas/Air <input type="checkbox"/> |  |  |  |  |

**21 Proposed Casing and Cement Program (Existing Wellbore)**

|             |                |                      |                |                 |                    |
|-------------|----------------|----------------------|----------------|-----------------|--------------------|
| Hole Size   | Casing Size    | Casing weight/foot   | Setting Depth  | Sacks of Cement | Estimated TOC      |
| <b>17½"</b> | <b>13 3/8"</b> | <b>48#</b>           | <b>319'</b>    | <b>300</b>      | <b>Circ</b>        |
| <b>12¼"</b> | <b>9 5/8"</b>  | <b>36 &amp; 40#</b>  | <b>5328'</b>   | <b>1900</b>     | <b>Circ</b>        |
| <b>8¼"</b>  | <b>7"</b>      | <b>23 - 26 - 29#</b> | <b>11,810'</b> | <b>860</b>      | <b>6410' by TS</b> |

<sup>22</sup> Describe the proposed program. If this application is to DEEPEN or PLUG BACK, give the data on the present productive zone and proposed new productive zone. Describe the blowout prevention program, if any. Use additional sheets if necessary

**BOLD ENERGY, LP proposes to abandon existing Morrow zone perfed between 11,225' - 11,234' & 11,382' - 11,482', plug back well bore to 9100' and re-complete into Wolfcamp formation from 8926' - 8934' (see attached well bore diagram for details). General Procedure:**

1. Set CIBP @ 11,150' & cap w/ 35' cement. Test plug & csg w/ 1000 psi.
2. Spot 100' cement plug from 9660' - 9760'; across DV tool @ 9711'.
3. Set CIBP @ 9700', new PBD. *q/c*
4. Perforate Wolfcamp from 8926' - 8934' w/ 3 SPF @ 120° phasing.
5. Stimulate Wolfcamp perms w/ 1000 bbls slick water cont'g 20,000# 30/50 EconoProp.
6. Test well and place on production using 2 3/8" tbg.

<sup>23</sup> I hereby certify that the information given above is true and complete to the best of my knowledge and belief. I further certify that the drilling pit will be constructed according to NMOCD guidelines ☐, a general permit ☐, or an (attached) alternative OCD-approved plan ☐.

Printed name: **D. C. Dodd** *Don Dodd*  
Title: **Agent for BOLD ENERGY, LP**  
E-mail Address: **ddodd@sierra-engineering.net**  
Date: **5/5/06** Phone: **432 / 683-8000**

**OIL CONSERVATION DIVISION**

Approved by:

**BRYAN G. ARRANT**

Title:

**DISTRICT II GEOLOGIST**

Approval Date:

**MAY 08 2006**

Expiration Date:

**MAY 08 2007**

Conditions of Approval Attached ☐

**District I**  
1625 N. French Dr., Hobbs, NM 88240  
**District II**  
1301 W. Grand Avenue, Artesia, NM 88210  
**District III**  
1000 Rio Brazos Rd., Aztec, NM 87410  
**District IV**  
1220 S. St. Francis Dr., Santa Fe, NM 87505

State of New Mexico  
Energy, Minerals & Natural Resources Department  
**OIL CONSERVATION DIVISION**  
1220 South St. Francis Dr.  
Santa Fe, NM 87505

Form C-102  
Revised October 12, 2005  
Submit to Appropriate District Office  
State Lease - 4 Copies  
Fee Lease - 3 Copies

☐ AMENDED REPORT

**WELL LOCATION AND ACREAGE DEDICATION PLAT**

|  |  |  |
|--|--|--|
| <sup>1</sup> API Number<br><b>30 - 015 - 20464</b> | <sup>2</sup> Pool Code<br><b>74200</b>               | <sup>3</sup> Pool Name<br><b>Carlsbad; Wolfcamp, South (Gas)</b> |
| <sup>4</sup> Property Code<br><b>301827</b>        | <sup>5</sup> Property Name<br><b>GoPoGo</b>          | <sup>6</sup> Well Number<br><b>2</b>                             |
| <sup>7</sup> OGRID No.<br><b>233545</b>            | <sup>8</sup> Operator Name<br><b>BOLD ENERGY, LP</b> | <sup>9</sup> Elevation<br><b>3162'</b>                           |

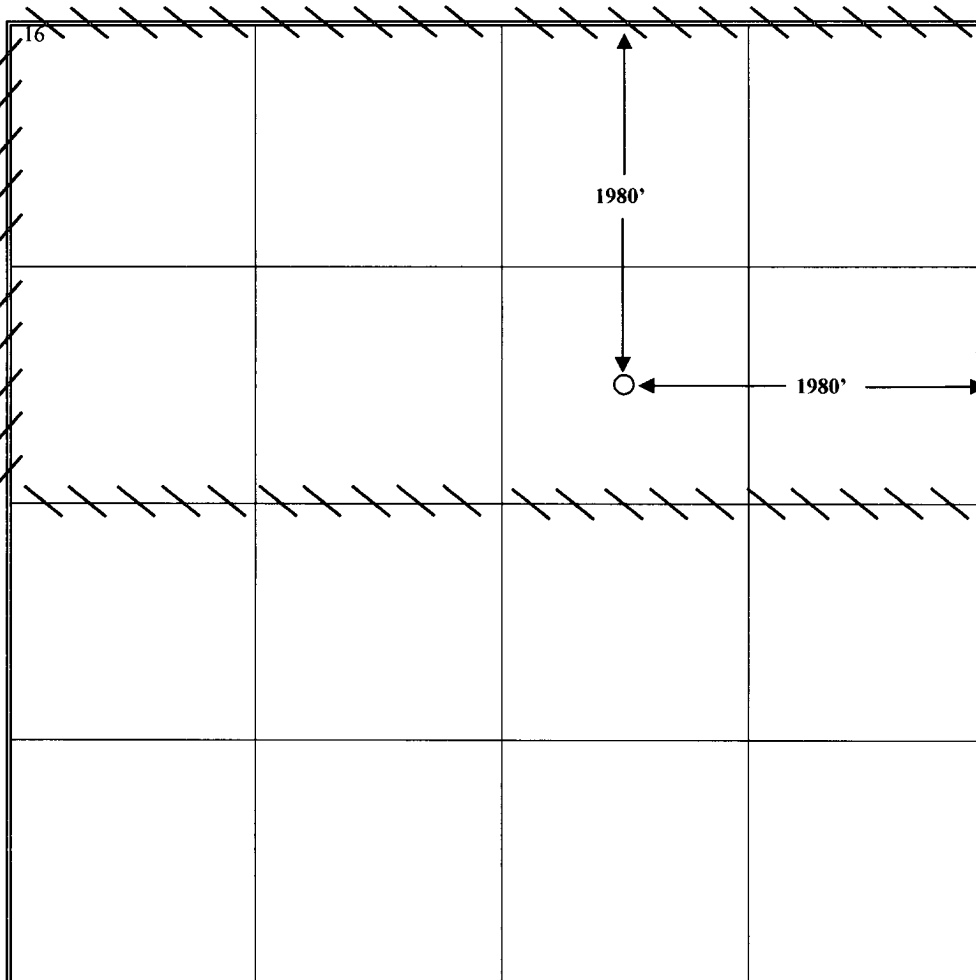
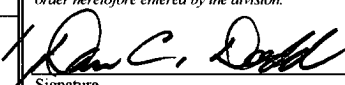
<sup>10</sup> Surface Location

|                           |                      |                        |                     |         |                              |                                  |                              |                               |                       |
|---------------------------|----------------------|------------------------|---------------------|---------|------------------------------|----------------------------------|------------------------------|-------------------------------|-----------------------|
| UL or lot no.<br><b>G</b> | Section<br><b>24</b> | Township<br><b>22S</b> | Range<br><b>26E</b> | Lot Idn | Feet from the<br><b>1980</b> | North/South line<br><b>North</b> | Feet from the<br><b>1980</b> | East/West line<br><b>East</b> | County<br><b>Eddy</b> |
|---------------------------|----------------------|------------------------|---------------------|---------|------------------------------|----------------------------------|------------------------------|-------------------------------|-----------------------|

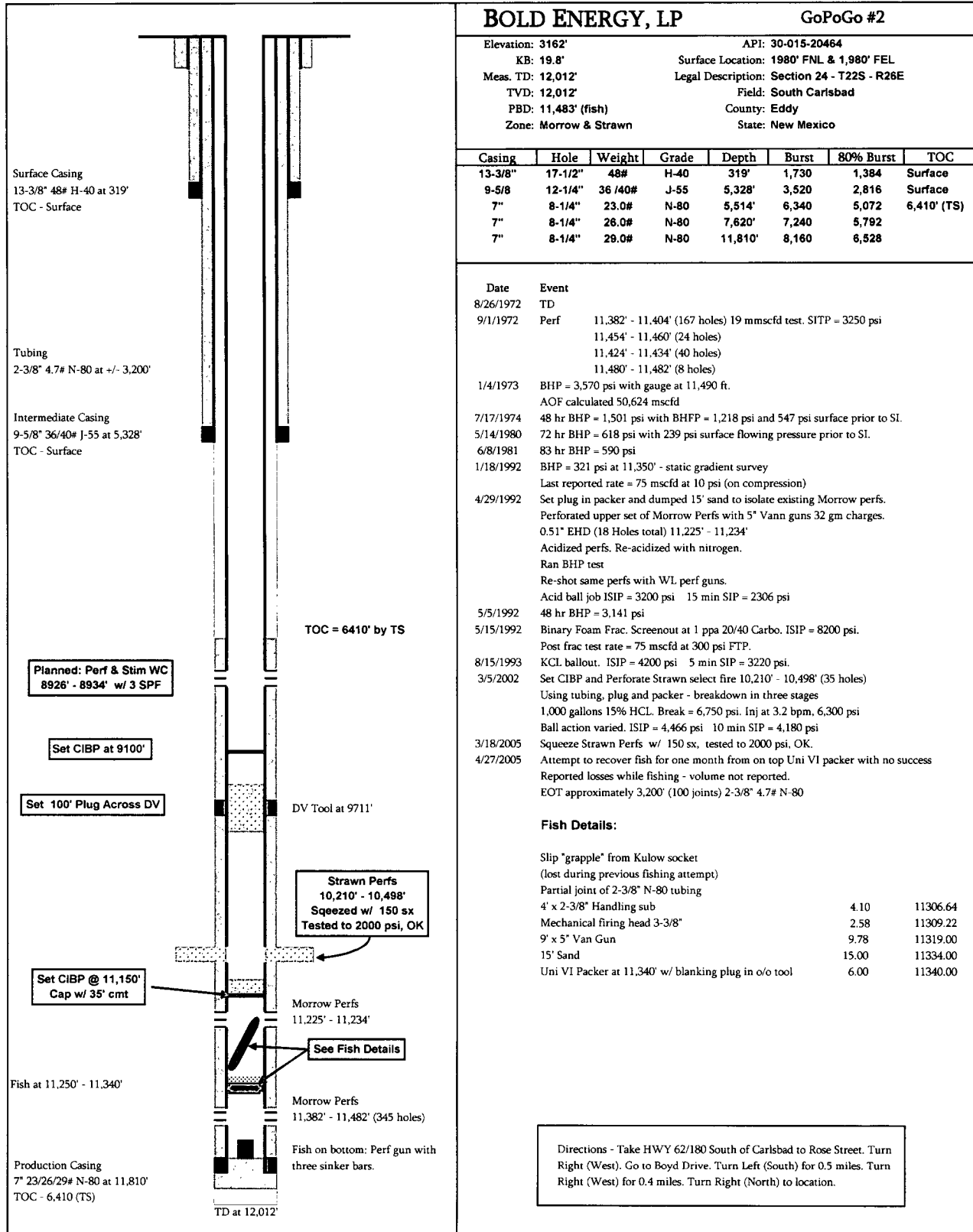
<sup>11</sup> Bottom Hole Location If Different From Surface

|   |   |  |                         |         |               |                  |               |                |        |
|---|---|--|-------------------------|---------|---------------|------------------|---------------|----------------|--------|
| UL or lot no.                               | Section                                   | Township                                     | Range                   | Lot Idn | Feet from the | North/South line | Feet from the | East/West line | County |
| <sup>12</sup> Dedicated Acres<br><b>320</b> | <sup>13</sup> Joint or Infill<br><b>N</b> | <sup>14</sup> Consolidation Code<br><b>C</b> | <sup>15</sup> Order No. |         |               |                  |               |                |        |

No allowable will be assigned to this completion until all interests have been consolidated or a non-standard unit has been approved by the division.

|  |  |
|--|--|
|  | <sup>17</sup> <b>OPERATOR CERTIFICATION</b><br><i>I hereby certify that the information contained herein is true and complete to the best of my knowledge and belief, and that this organization either owns a working interest or unleased mineral interest in the land including the proposed bottom hole location or has a right to drill this well at this location pursuant to a contract with an owner of such a mineral or working interest, or to a voluntary pooling agreement or a compulsory pooling order heretofore entered by the division.</i><br><br>Signature<br>5/5/06<br>Date<br><b>D. C. Dodd, Agent for BOLD ENERGY, LP</b><br>Printed Name<br><b>ddodd@sierra-engineering.net</b> |
|  | <sup>18</sup> <b>SURVEYOR CERTIFICATION</b><br><i>I hereby certify that the well location shown on this plat was plotted from field notes of actual surveys made by me or under my supervision, and that the same is true and correct to the best of my belief.</i><br><b>Original Survey dated June 24, 1971</b><br>Date of Survey<br>Signature and Seal of Professional Surveyor:<br><br><b>676 - John W. West / Original Survey</b><br>Certificate Number   |

# PROPOSED



## Proposed Plug Back Procedure

1. Set CIBP @ 11,150' & cap w/ 35' cmt.
2. Test 7" from 0' - 11,115' w/ 1000 psi.
3. Set 100' cmt plug f/ 9660' - 9760' across DV @ 9711'.
4. Set CIBP @ 9100'
5. Perf Wolfcamp 8926' - 8934' and frac.
6. Test & place on production.