

UNITED STATES
DEPARTMENT OF THE INTERIOR
BUREAU OF LAND MANAGEMENTFORM APPROVED
OMB NO. 1004-0137
Expires: January 31, 2018**SUNDRY NOTICES AND REPORTS ON WELLS**
*Do not use this form for proposals to drill or to re-enter an abandoned well. Use form 3160-3 (APD) for such proposals.*5. Lease Serial No.
NMNM17056

6. If Indian, Allottee or Tribe Name

7. If Unit or CA/Agreement, Name and/or No.

SUBMIT IN TRIPLICATE - Other instructions on page 2

1. Type of Well

☒ Oil Well ☐ Gas Well ☐ Other8. Well Name and No.
NASH UNIT 204H2. Name of Operator
XTO ENERGY INCORPORATEDContact: KELLY KARDOS
E-Mail: kelly_kardos@xtoenergy.com9. API Well No.
30-015-45497-00-X13a. Address
6401 HOLIDAY HILL ROAD BLDG 5
MIDLAND, TX 797073b. Phone No. (include area code)
Ph: 432-620-437410. Field and Pool or Exploratory Area
FORTY NINER RIDGE-BONE SPRING

4. Location of Well (Footage, Sec., T., R., M., or Survey Description)

Sec 19 T23S R30E NWNE 610FNL 1955FEL
32.296047 N Lat, 103.918625 W Lon

11. County or Parish, State

EDDY COUNTY, NM

12. CHECK THE APPROPRIATE BOX(ES) TO INDICATE NATURE OF NOTICE, REPORT, OR OTHER DATA

TYPE OF SUBMISSION	TYPE OF ACTION			
<input checked="" type="checkbox"/> Notice of Intent	<input type="checkbox"/> Acidize	<input type="checkbox"/> Deepen	<input type="checkbox"/> Production (Start/Resume)	<input type="checkbox"/> Water Shut-Off
<input type="checkbox"/> Subsequent Report	<input type="checkbox"/> Alter Casing	<input type="checkbox"/> Hydraulic Fracturing	<input type="checkbox"/> Reclamation	<input type="checkbox"/> Well Integrity
<input type="checkbox"/> Final Abandonment Notice	<input type="checkbox"/> Casing Repair	<input type="checkbox"/> New Construction	<input type="checkbox"/> Recomplete	<input checked="" type="checkbox"/> Other
	<input type="checkbox"/> Change Plans	<input type="checkbox"/> Plug and Abandon	<input type="checkbox"/> Temporarily Abandon	Change to Original APD
	<input type="checkbox"/> Convert to Injection	<input type="checkbox"/> Plug Back	<input type="checkbox"/> Water Disposal	

13. Describe Proposed or Completed Operation: Clearly state all pertinent details, including estimated starting date of any proposed work and approximate duration thereof. If the proposal is to deepen directionally or recomple horizontally, give subsurface locations and measured and true vertical depths of all pertinent markers and zones. Attach the Bond under which the work will be performed or provide the Bond No. on file with BLM/BIA. Required subsequent reports must be filed within 30 days following completion of the involved operations. If the operation results in a multiple completion or recompletion in a new interval, a Form 3160-4 must be filed once testing has been completed. Final Abandonment Notices must be filed only after all requirements, including reclamation, have been completed and the operator has determined that the site is ready for final inspection.

XTO Energy Inc. respectfully requests permission to make the following changes to the original APD

Change intermediate casing depth per the attached drilling program.

XTO requests to not utilize centralizers in the curve or lateral.

Test on 2M annular; Choke & casing will be limited to 70% burst of the casing or 1500 psi, whichever is less.

Carlsbad Field Office
OCD Artesia

RECEIVED

JUN 25 2019

DISTRICT # ARTESIA O.C.D.

14. I hereby certify that the foregoing is true and correct.

Electronic Submission #464718 verified by the BLM Well Information System
For XTO ENERGY INCORPORATED, sent to the Carlsbad
Committed to AFMSS for processing by PRISCILLA PEREZ on 05/09/2019 (19PP1992SE)

Name (Printed/Typed) KELLY KARDOS

Title REGULATORY COORDINATOR

Signature (Electronic Submission)

Date 05/09/2019

THIS SPACE FOR FEDERAL OR STATE OFFICE USE

Approved By ZOTA STEVENS

Title PETROLEUM ENGINEER

Date 05/23/2019

Conditions of approval, if any, are attached. Approval of this notice does not warrant or certify that the applicant holds legal or equitable title to those rights in the subject lease which would entitle the applicant to conduct operations thereon.

Office Carlsbad

Title 18 U.S.C. Section 1001 and Title 43 U.S.C. Section 1212, make it a crime for any person knowingly and willfully to make to any department or agency of the United States any false, fictitious or fraudulent statements or representations as to any matter within its jurisdiction.

(Instructions on page 2)

** BLM REVISED ** BLM REVISED ** BLM REVISED ** BLM REVISED ** BLM REVISED **

RUP 7-5-19

DRILLING PLAN: BLM COMPLIANCE
(Supplement to BLM 3160-3)

XTO Energy Inc.
Nash 204H

Projected TD: 25450' MD / 9244' TVD
SHL: 610' FNL & 1955' FEL , Section 19, T23S, R30E
BHL: 50' FNL & 2310' FEL , Section 6, T23S, R30E
Eddy County, NM

1. Geologic Name of Surface Formation

A. Quaternary

2. Estimated Tops of Geological Markers & Depths of Anticipated Fresh Water, Oil or Gas

Formation	Well Depth (TVD)	Water/Oil/Gas
Rustler	162'	Water
Top of Salt	593'	Water
Base of Salt	3174'	Water
Delaware	3396'	Water
Bone Spring	7188'	Water
1st Bone Spring Ss	8142'	Water/Oil/Gas
2nd Bone Spring Ss	8969'	Water/Oil/Gas
3rd Bone Spring Ss	10062'	Water/Oil/Gas
Target/Land Curve	9244'	Water/Oil/Gas

*** Hydrocarbons @ Brushy Canyon

*** Groundwater depth 40' (per NM State Engineers Office).

No other formations are expected to yield oil, gas or fresh water in measurable volumes. The surface fresh water sands will be protected by setting 18-5/8" inch casing @ 568' (25' above the salt) and circulating cement back to surface. The salt will be isolated by setting 13-3/8" inch casing at 3224' and circulating cement to surface. The second intermediate will isolate from the salt down to the next casing seat by setting 9-5/8" inch casing at 9675' and a DV tool at 3274'. A 8-3/4" inch curve and lateral hole will be drilled to MD/TD and 5-1/2 inch casing will be set at TD and cemented back up to surface per Potash regulations.

3. Casing Design

Hole Size	Depth	OD Csg	Weight	Collar	Grade	New/Used	SF Burst	SF Collapse	SF Tension
24"	0' – 568'	18-5/8"	87.5	STC	H-40	New	1.66	2.42	11.25
17-1/2"	0' – 3224'	13-3/8"	68	STC	J-55	New	1.30	1.95	3.08
12-1/4"	0' – 9675'	9-5/8"	40	LTC	HCL-80	New	2.19	1.94	1.88
8-3/4"	0' – 25450'	5-1/2"	17	BTC	P-110	New	1.12	1.60	2.11

- XTO requests to NOT utilize centralizers in the curve or lateral
- 13-3/8" Collapse analyzed using 50% evacuation based on regional experience.
- 9-5/8" Collapse analyzed using 33% evacuation based on regional experience.
- 5-1/2" Tension calculated using vertical hanging weight plus the lateral weight multiplied by a friction factor of 0.35
- Test on 2M Annular, Choke & Casing will be limited to 70% burst of the casing or 1500 psi, whichever is less

Wellhead:

Temporary Wellhead

- 18-5/8" SOW bottom x 21-1/4" 2M top flange.

Permanent Wellhead – GE RSH Multibowl System

A. Starting Head: 13-5/8" 5M top flange x 13-3/8" SOW bottom

B. Tubing Head: 13-5/8" 5M bottom flange x 7-1/16" 10M top flange

- Wellhead will be installed by manufacturer's representatives.
- Manufacturer will monitor welding process to ensure appropriate temperature of seal.
- Operator will test the 9-5/8" casing per BLM Onshore Order 2
- Wellhead Manufacturer representative will not be present for BOP test plug installation

4. Cement Program

Surface Casing: 18-5/8", 87.5 New H-40, STC casing to be set at +/- 568'

Lead: 350 sxs EconoCem-HLTRRC (mixed at 12.9 ppg, 1.87 ft³/sx, 10.13 gal/sx water)

Tail: 550 sxs Halcem-C + 2% CaCl (mixed at 14.8 ppg, 1.35 ft³/sx, 6.39 gal/sx water)

Compressives: 12-hr = 900 psi 24 hr = 1500 psi

1st Intermediate Casing: 13-3/8", 68 New J-55, STC casing to be set at +/- 3224'

Lead: 2170 sxs EconoCem-HLTRRC (mixed at 12.9 ppg, 1.87 ft³/sx, 10.13 gal/sx water)

Tail: 300 sxs Halcem-C + 2% CaCl (mixed at 14.8 ppg, 1.35 ft³/sx, 6.39 gal/sx water)

Compressives: 12-hr = 900 psi 24 hr = 1500 psi

2nd Intermediate Casing: 9-5/8", 40 New HCL-80, LTC casing to be set at +/- 9675'

ECP/DV Tool to be set at 3274'

1st Stage

Lead: 1960 sxs Halcem-C + 2% CaCl (mixed at 12.9 ppg, 1.88 ft³/sx, 9.61 gal/sx water)

Tail: 230 sxs Halcem-C + 2% CaCl (mixed at 14.8 ppg, 1.33 ft³/sx, 6.39 gal/sx water)

Compressives: 12-hr = 900 psi 24 hr = 1500 psi

2nd Stage

Lead: 920 sxs Halcem-C + 2% CaCl (mixed at 12.9 ppg, 1.88 ft³/sx, 9.61 gal/sx water)

Tail: 230 sxs Halcem-C + 2% CaCl (mixed at 14.8 ppg, 1.33 ft³/sx, 6.39 gal/sx water)

Compressives: 12-hr = 900 psi 24 hr = 1500 psi

Production Casing: 5-1/2", 17 New P-110, BTC casing to be set at +/- 25450'

Lead: -70 sxs NeoCem (mixed at 10.5 ppg, 2.69 ft³/sx, 12.26 gal/sx water)

Tail: 3540 sxs VersaCem (mixed at 13.2 ppg, 1.61 ft³/sx, 8.38 gal/sx water)

Compressives: 12-hr = 1375 psi 24 hr = 2285 psi

5. Pressure Control Equipment

The blow out preventer equipment (BOP) on surface casing temporary wellhead will consist of a 21-1/4" minimum 2M Hydril. MASP should not exceed 984 psi.

Once the permanent WH is installed on the 13-3/8" casing, the blow out preventer equipment (BOP) will consist of a 13-5/8" minimum 3M Hydril and a 13-5/8" minimum 3M Double Ram BOP. MASP should not exceed 2629 psi.

All BOP testing will be done by an independent service company. Annular pressure tests will be limited to 50% of the working pressure. When nipping up on the 13-3/8", 3M bradenhead and flange, the BOP test will be limited to 3000 psi. When nipping up on the 9-5/8", the BOP will be tested to a minimum of 3000 psi. All BOP tests will include a low pressure test as per BLM regulations. The 3M BOP diagrams are attached. Blind rams will be functioned tested each trip, pipe rams will be functioned tested each day.

A variance is requested to allow use of a flex hose as the choke line from the BOP to the Choke Manifold. If this hose is used, a copy of the manufacturer's certification and pressure test chart will be kept on the rig. Attached is an example of a certification and pressure test chart. The manufacturer does not require anchors.

6. Proposed Mud Circulation System

INTERVAL	Hole Size	Mud Type	MW (ppg)	Viscosity (sec/qt)	Fluid Loss (cc)
0' - 568'	24"	FW/Native	8.4-8.8	35-40	NC
568' - 3224'	17-1/2"	Brine	9.8-10.2	30-32	NC
3224' to 9675'	12-1/4"	FW / Cut Brine	8.7-9.4	30-32	NC
9675' to 25450'	8-3/4"	Cut Brine / Polymer	9.4 - 9.7	29-32	NC - 20

The necessary mud products for weight addition and fluid loss control will be on location at all times.

Spud with fresh water/native mud. Drill out from under 18-5/8" surface casing with brine solution. A ppg-10.2ppg brine mud will be used while drilling through the salt formation. Use fibrous materials as needed to control seepage and lost circulation. Pump viscous sweeps as needed for hole cleaning. Pump speed will be recorded on a daily drilling report after mudding up. A Pason or Totco will be used to detect changes in loss or gain of mud volume. A mud test will be performed every 24 hours to determine: density, viscosity, strength, filtration and pH as necessary. Use available solids controls equipment to help keep mud weight down after mud up. Rig up solids control equipment to operate as a closed loop system.

7. Auxiliary Well Control and Monitoring Equipment

- A. A Kelly cock will be in the drill string at all times.
- B. A full opening drill pipe stabbing valve having appropriate connections will be on the rig floor at all times.
- C. H2S monitors will be on location when drilling below the 13-3/8" casing.

8. Logging, Coring and Testing Program

Mud Logger: Mud Logging Unit (2 man) below intermediate casing.

Open hole logging will not be done on this well.

9. Abnormal Pressures and Temperatures / Potential Hazards

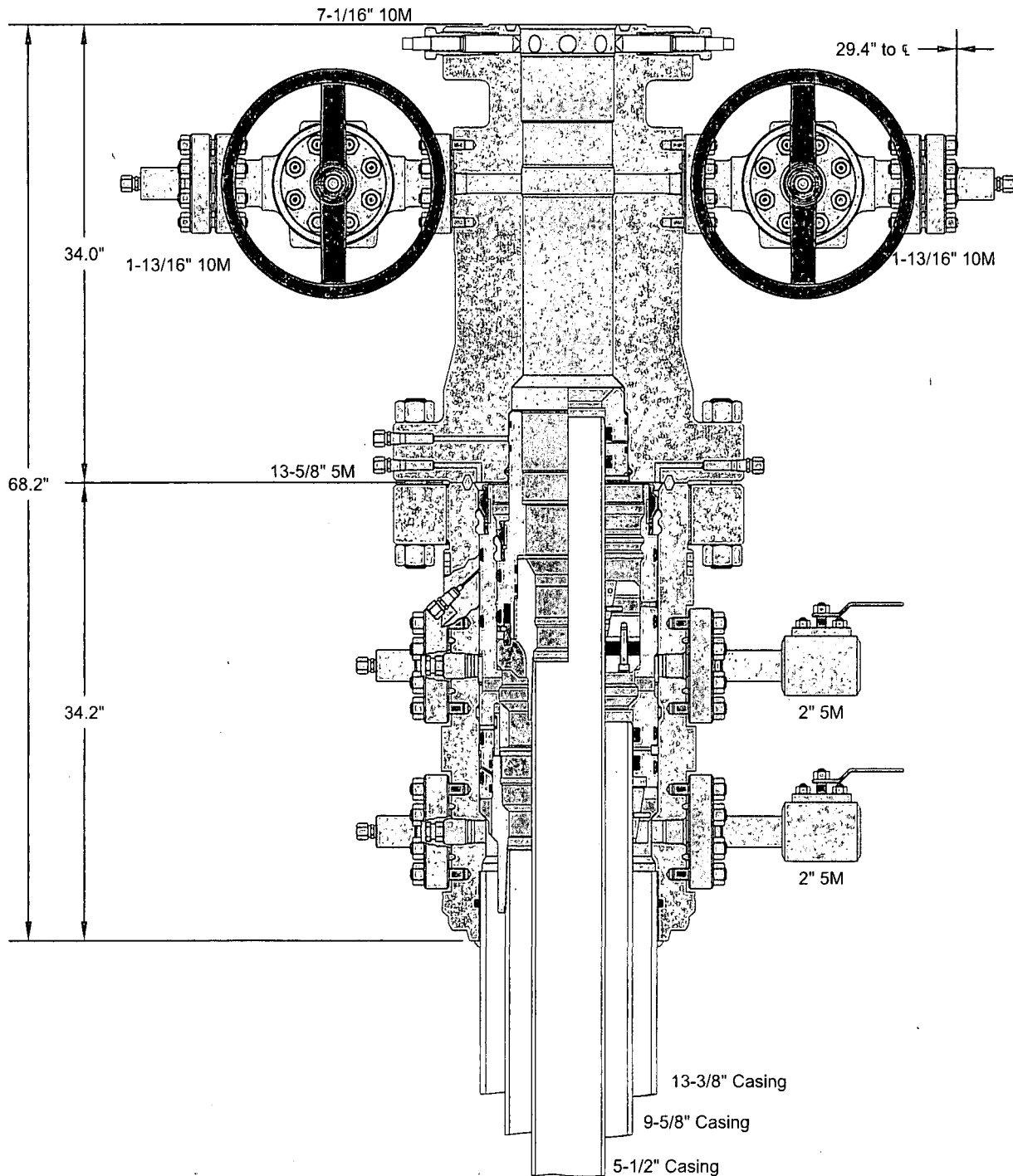
None Anticipated. BHT of 160 to 180 F is anticipated. No H2S is expected but monitors will be in place to detect any H2S occurrences. Should these circumstances be encountered the operator and drilling contractor are prepared to take all necessary steps to ensure safety of all personnel and environment. Lost circulation could occur but is not expected to be a serious problem in this area and hole seepage will be compensated for by additions of small amounts of LCM in the drilling fluid. The maximum anticipated bottom hole pressure for this well is 4663 psi.

10. Anticipated Starting Date and Duration of Operations

Road and location construction will begin after Santa Fe and BLM have approved the APD. Anticipated spud date will be as soon after Santa Fe and BLM approval and as soon as a rig will be available. Move in operations and drilling is expected to take 40 days. If production casing is run, an additional 30 days will be needed to complete well and construct surface facilities and/or lay flow lines in order to place well on production.



GE Oil & Gas



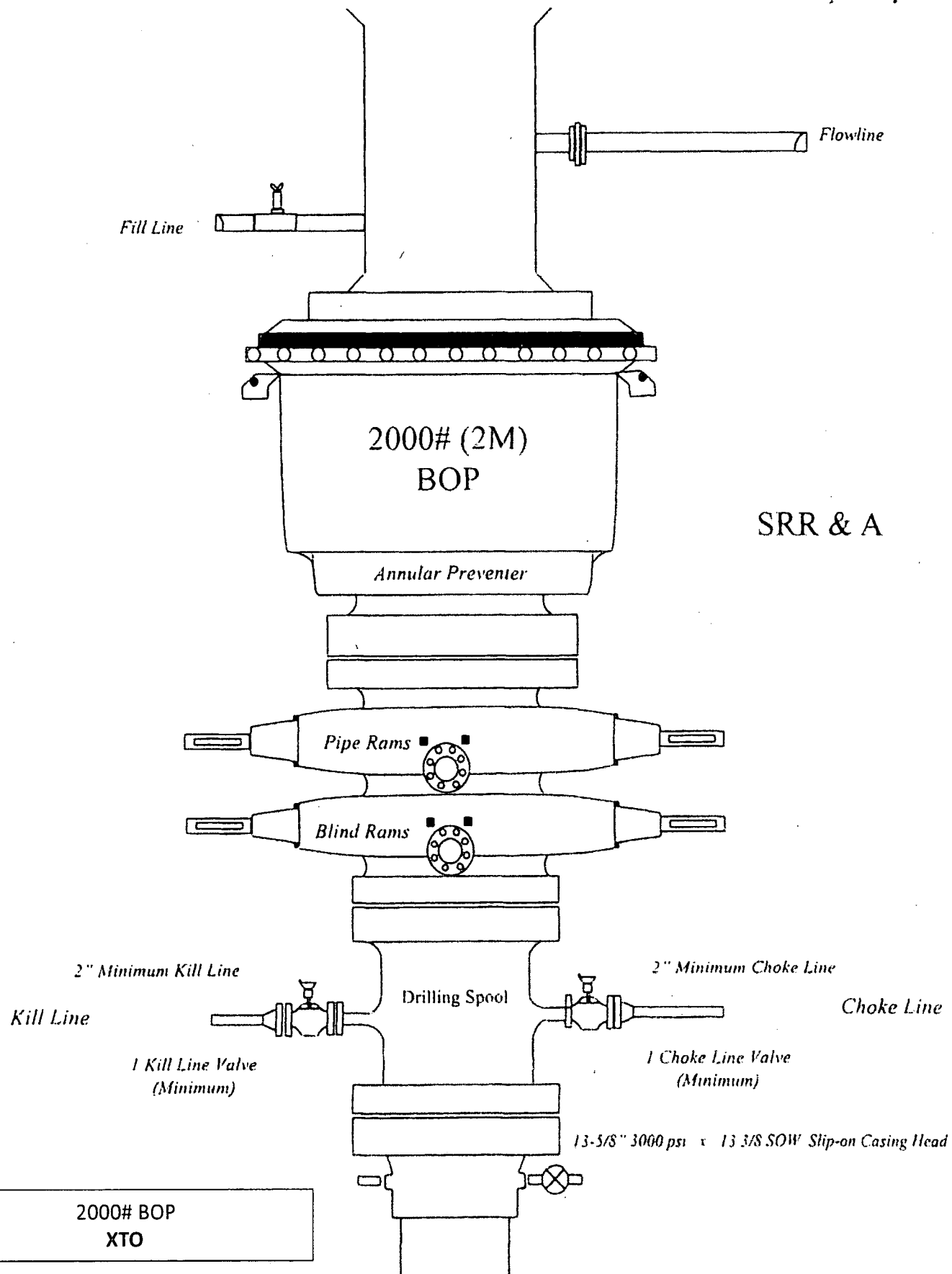
ALL DIMENSIONS ARE APPROXIMATE

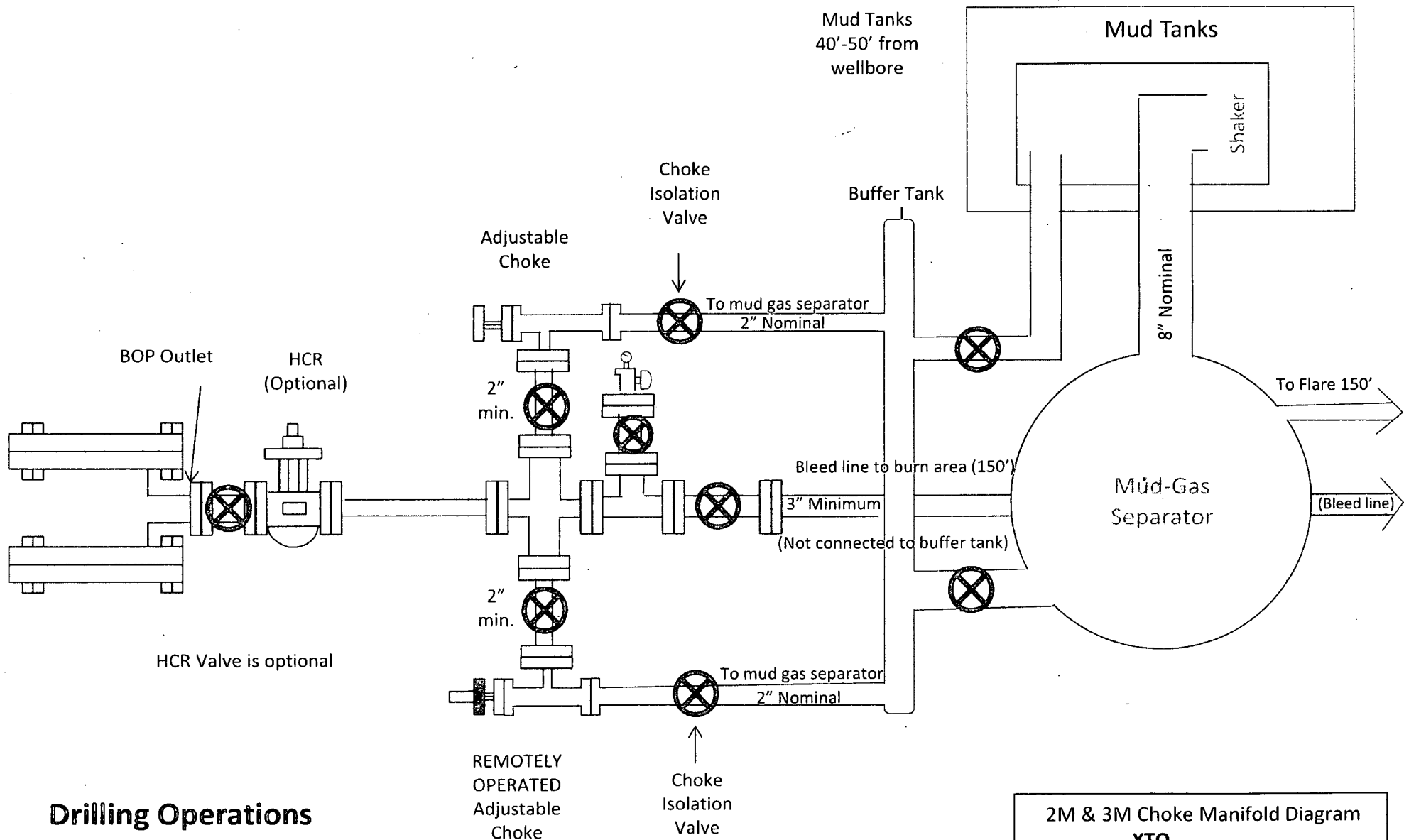
This drawing is the property of GE Oil & Gas Pressure Control LP and is considered confidential. Unless otherwise approved in writing, neither it nor its contents may be used, copied, transmitted or reproduced except for the sole purpose of GE Oil & Gas Pressure Control LP.

XTO ENERGY, INC.

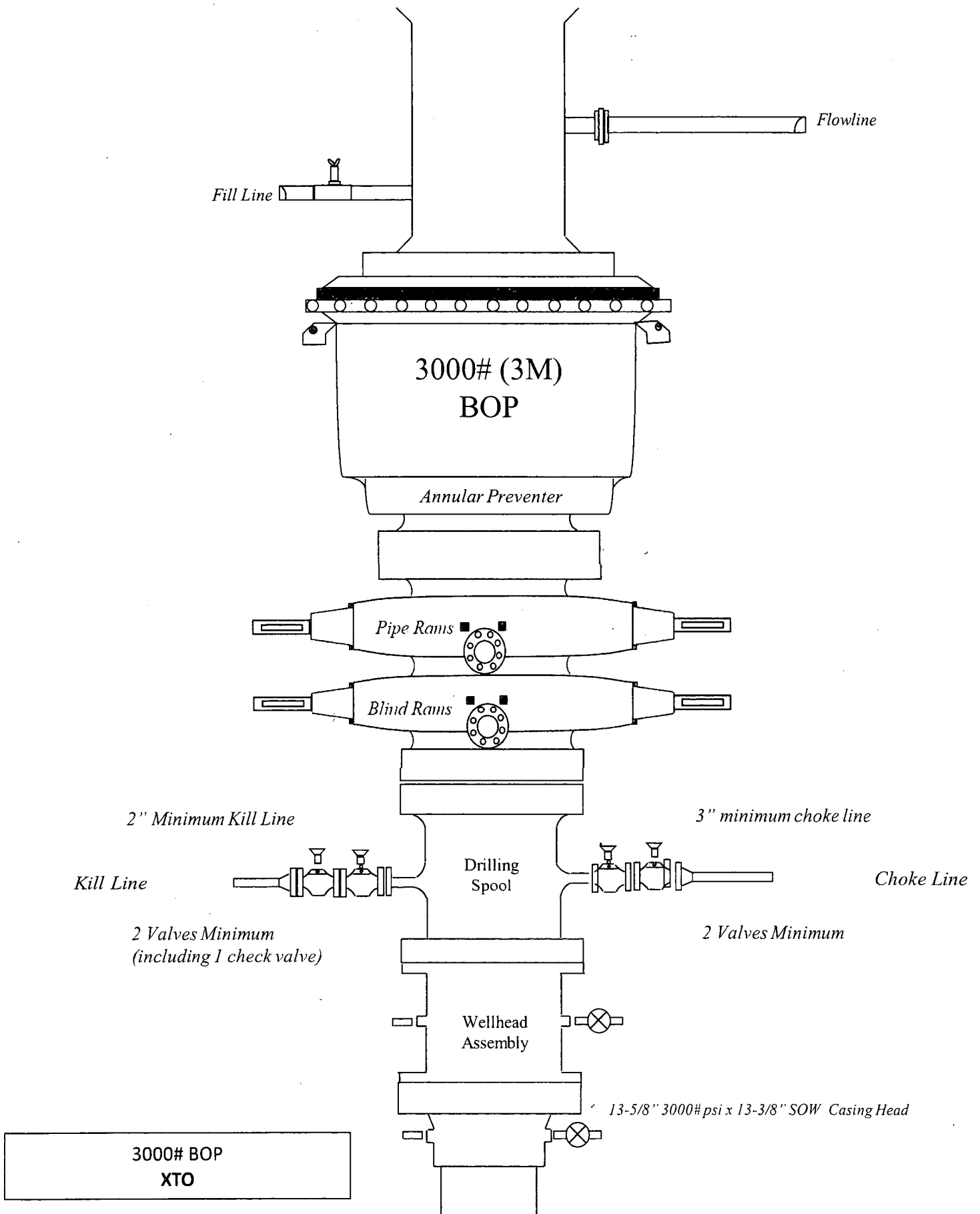
13-3/8" x 9-5/8" x 5-1/2" 10M RSH-2 Wellhead
Assembly, With T-EBS-F Tubing Head

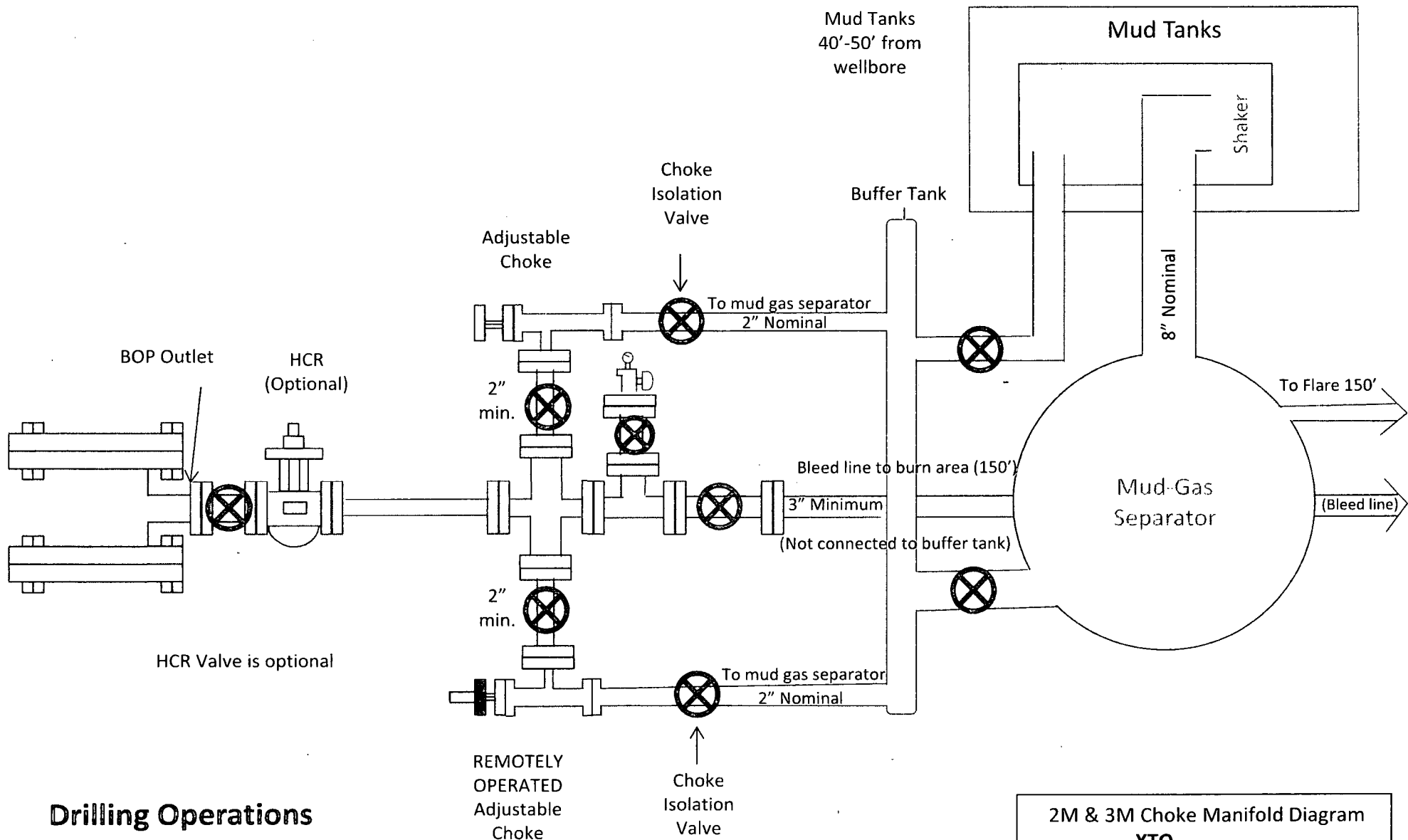
DRAWN	VJK	16FEB17
APPRV	KN	16FEB17
FOR REFERENCE ONLY		
DRAWING NO.		10012842



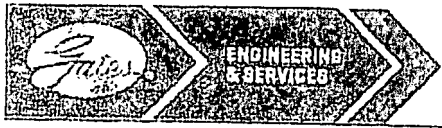


Drilling Operations **Choke Manifold** **2M & 3M Service**





Drilling Operations **Choke Manifold** **2M & 3M Service**



GATES E & S NORTH AMERICA, INC
DU-TEX
134 44TH STREET
CORPUS CHRISTI, TEXAS 78405

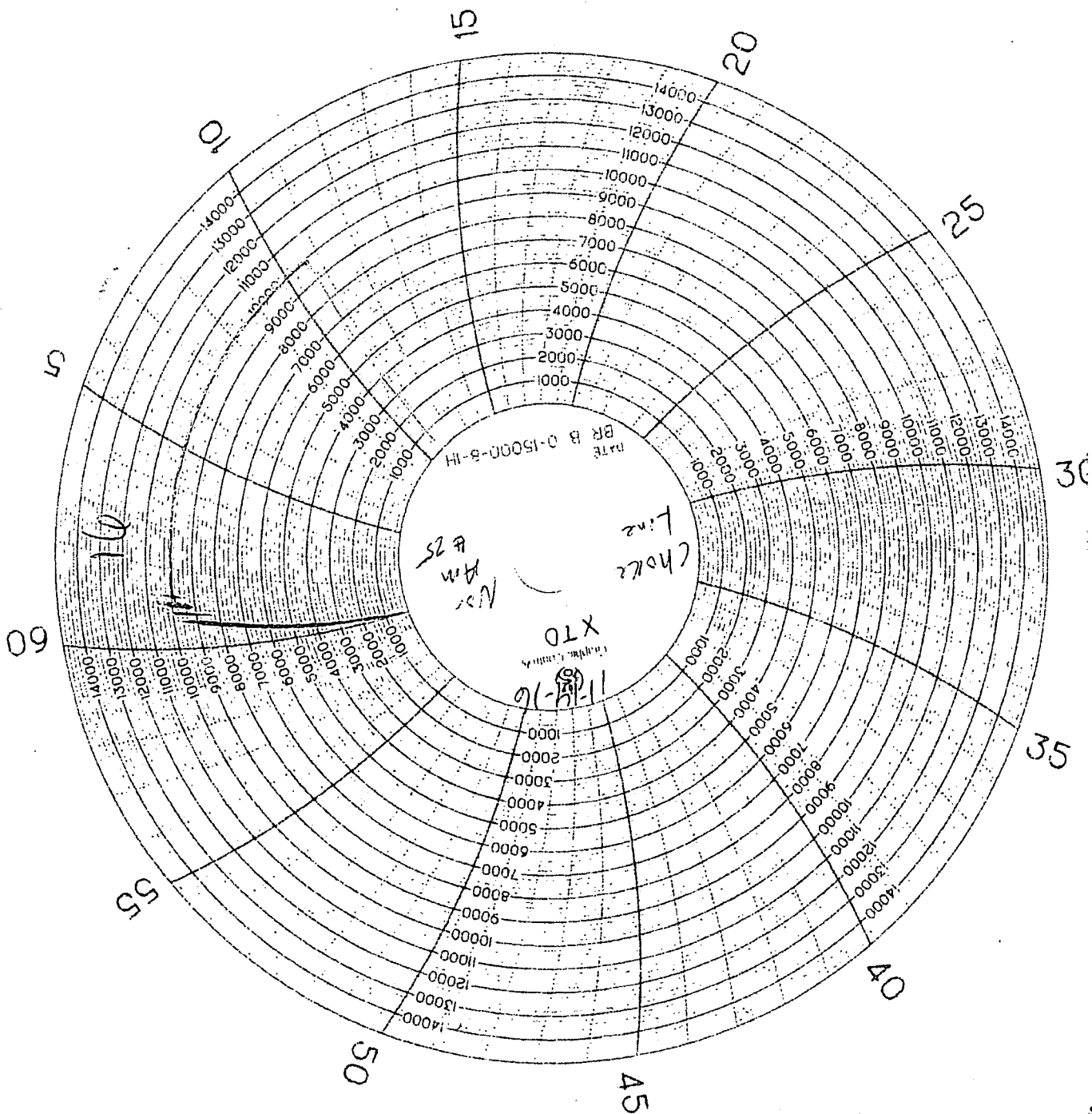
PHONE: 361-887-9807
FAX: 361-887-0812
EMAIL: crpe@s@gates.com
WEB: www.gates.com

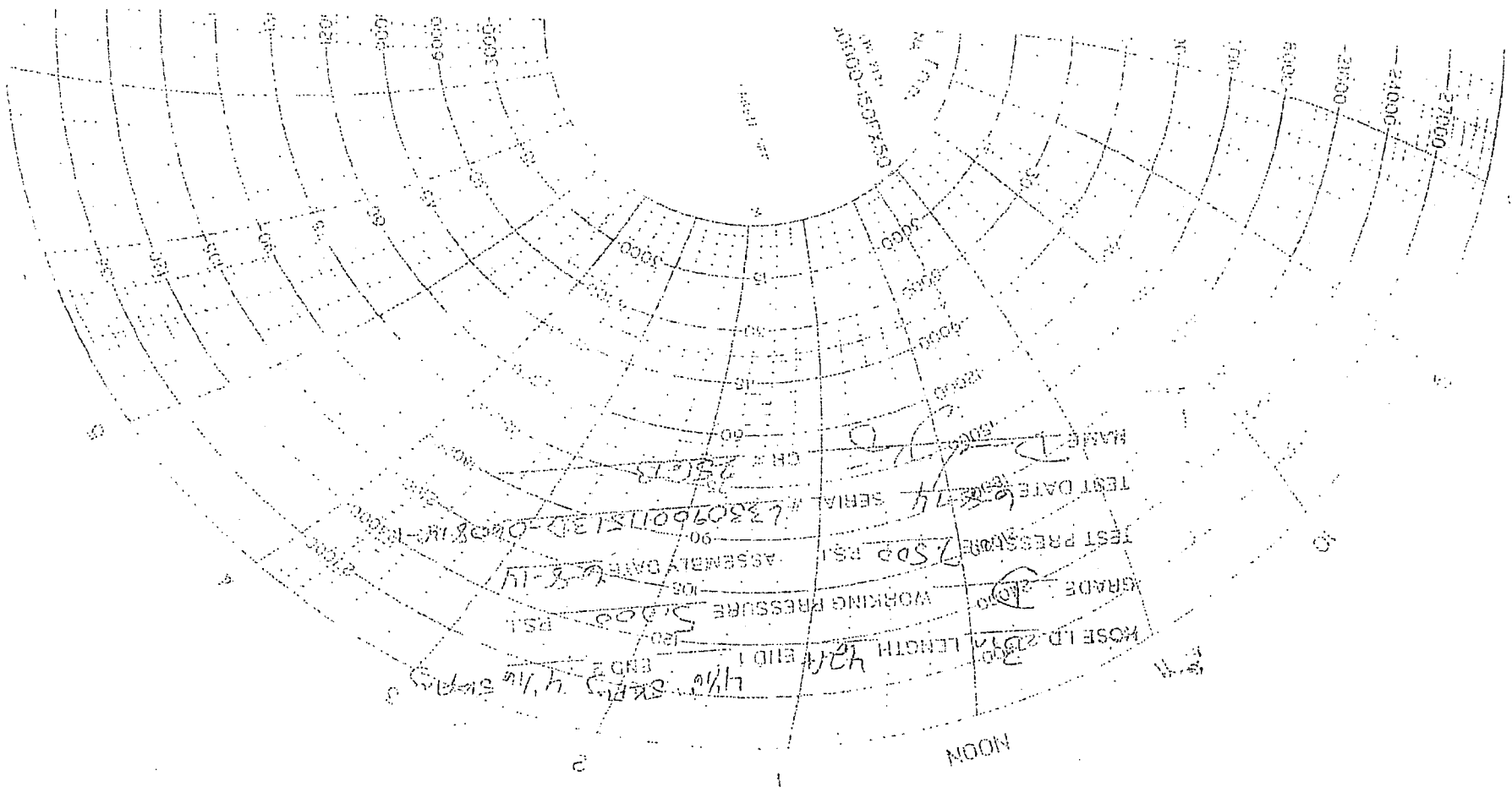
GRADE D PRESSURE TEST CERTIFICATE

Customer :	AUSTIN DISTRIBUTING	Test Date:	6/8/2014
Customer Ref. :	PENDING	Hose Serial No.:	D-060814-1
Invoice No. :	201709	Created By:	MORI-4A
Product Description:	FD3.042.0R41/16.5KFLGE/E LE		
End Fitting 1 :	4 1/16 in.5K FLG	End Fitting 2 :	4 1/16 in.5K FLG
Gates Part No. :	4774-6001	Assembly Code :	L33090011513D-060814-1
Working Pressure :	5,000 PSI	Test Pressure :	7,500 PSI

Gates E & S North America, Inc. certifies that the following hose assembly has been tested to the Gates Oilfield Roughneck Agreement/Specification requirements and passed the 15 minute hydrostatic test per API Spec 7K/Q1, Fifth Edition, June 2010, Test pressure 9.6.7 and per Table 9 to 7,500 psi in accordance with this product number. Hose burst pressure 9.6.7.2 exceeds the minimum of 2.5 times the working pressure per Table 9.

Quality:	QUALITY	Technical Supervisor:	PRODUCTION
Date:	6/8/2014	Date:	6/8/2014
Signature:		Signature:	





NAME D. J. B.
TEST DATE 6-8-74
SERIAL # 6380960115132-060818-10000
TEST PRESSURE 7500 PSI
WORKING PRESSURE 5000 PSI
GRADE 1
HOSE I.D. 2 1/2
LENGTH 424
END 1 4 1/2
END 2 4 1/2
END 3 4 1/2
ASSEMBLY DATE 6-8-74
CH # 28013

NOON