

District I
1625 N. French Dr., Hobbs, NM 88240
Phone: (575) 393-6161 Fax: (575) 393-0720
District II
811 S. First St., Artesia, NM 88210
Phone: (575) 748-1283 Fax: (575) 748-9720
District III
1000 Rio Brazos Road, Aztec, NM 87410
Phone: (505) 334-6178 Fax: (505) 334-6170
District IV
1220 S. St. Francis Dr., Santa Fe, NM 87505
Phone: (505) 476-3460 Fax: (505) 476-3462

State of New Mexico
Energy, Minerals & Natural Resources Department
OIL CONSERVATION DIVISION
1220 South St. Francis Dr.
Santa Fe, NM 87505

RECEIVED
JUN 28 2019
DISTRICT II-ARTESIA O.C.D.

Form C-102
Revised August 1, 2011
Submit one copy to appropriate
District Office

☐ AMENDED REPORT

WELL LOCATION AND ACREAGE DEDICATION PLAT

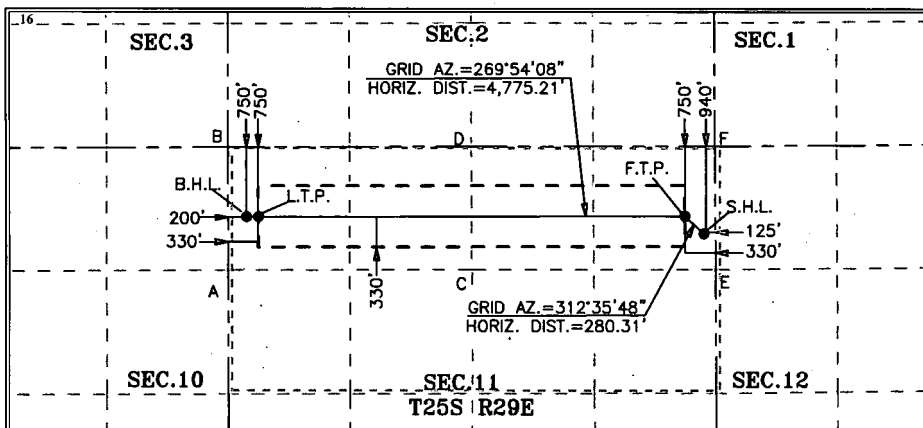
¹ API Number 30-015- 46154	² Pool Code 98220	³ Pool Name PURPLE SAGE; WOLFCAMP
⁴ Property Code 325779	⁵ Property Name TOMBSTONE 11 STATE	⁶ Well Number 102H
⁷ OGRID No. 005380	⁸ Operator Name XTO ENERGY, INC.	⁹ Elevation 3,091'

¹⁰ Surface Location									
UL or lot no.	Section	Township	Range	Lot Idn	Feet from the	North/South line	Feet from the	East/West line	County
A	11	25 S	29 E		940	NORTH	125	EAST	EDDY

¹¹ Bottom Hole Location If Different From Surface									
UL or lot no.	Section	Township	Range	Lot Idn	Feet from the	North/South line	Feet from the	East/West line	County
D	11	25 S	29 E		750	NORTH	200	WEST	EDDY

¹² Dedicated Acres 320	¹³ Joint or Infill	¹⁴ Consolidation Code	¹⁵ Order No.
--------------------------------------	-------------------------------	----------------------------------	-------------------------

No allowable will be assigned to this completion until all interests have been consolidated or a non-standard unit has been approved by the division.



GEODETTIC COORDINATES		GEODETTIC COORDINATES	
SURFACE LOCATION	LAST TAKE POINT	SURFACE LOCATION	LAST TAKE POINT
NAD 27 NME	NAD 27 NME	NAD 83 NME	NAD 83 NME
Y= 418,228.2	Y= 418,409.9	Y= 418,286.6	Y= 418,468.4
X= 619,717.2	X= 614,865.7	X= 660,901.5	X= 656,050.0
LAT.= 32.149235°N	LAT.= 32.149781°N	LAT.= 32.149359°N	LAT.= 32.149905°N
LONG.= 103.946516°W	LONG.= 103.962189°W	LONG.= 103.947002°W	LONG.= 103.962676°W
FIRST TAKE POINT	BOTTOM HOLE LOCATION	FIRST TAKE POINT	BOTTOM HOLE LOCATION
NAD 27 NME	NAD 27 NME	NAD 83 NME	NAD 83 NME
Y= 418,417.9	Y= 418,409.6	Y= 418,476.3	Y= 418,468.1
X= 619,510.9	X= 614,735.7	X= 660,695.2	X= 655,920.0
LAT.= 32.149758°N	LAT.= 32.149782°N	LAT.= 32.149882°N	LAT.= 32.149906°N
LONG.= 103.947180°W	LONG.= 103.962609°W	LONG.= 103.947666°W	LONG.= 103.963096°W

CORNER COORDINATES TABLE		CORNER COORDINATES TABLE	
NAD 27 NME	NAD 83 NME	NAD 27 NME	NAD 83 NME
A - Y= 417,831.1 N, X= 614,537.3 E	A - Y= 417,889.6 N, X= 655,721.6 E	B - Y= 419,159.1 N, X= 614,533.5 E	B - Y= 419,217.6 N, X= 655,717.8 E
C - Y= 417,836.9 N, X= 617,191.0 E	C - Y= 417,895.3 N, X= 658,375.3 E	D - Y= 419,165.0 N, X= 617,183.8 E	D - Y= 419,223.5 N, X= 658,368.1 E
E - Y= 417,841.3 N, X= 619,844.8 E	E - Y= 417,899.7 N, X= 661,029.2 E	F - Y= 419,168.2 N, X= 619,835.6 E	F - Y= 419,226.7 N, X= 661,019.9 E

¹⁷ OPERATOR CERTIFICATION
I hereby certify that the information contained herein is true and complete to the best of my knowledge and belief, and that this organization either owns a working interest or unleased mineral interest in the land including the proposed bottom hole location or has a right to drill this well at this location pursuant to a contract with an owner of such a mineral or working interest, or to a voluntary pooling agreement or a compulsory pooling order heretofore entered by the division.

Kelly Kardos 6-12-19
Signature Date
Kelly Kardos
Printed Name
kelly_kardos@xtoenergy.com
E-mail Address

¹⁸ SURVEYOR CERTIFICATION
I hereby certify that the well location shown on this plat was plotted from field notes of actual surveys made by me or under my supervision, and that the same is true and correct to the best of my belief.

02-28-2019
Date of Survey
Signature and Seal of Professional Surveyor:
MARK DILLON HARP 23786
Certificate Number JC 2019010088

RUP 7-1-19