

RECEIVED

DISTRICT I
1625 N. French Dr., Hobbs, NM 88240
Phone (505) 393-6161 Fax: (505) 393-0720

DISTRICT II
811 S. First St., Artesia, NM 88210
Phone (505) 748-1283 Fax: (505) 748-0720

DISTRICT III
1000 Rio Brazos Rd., Aztec, NM 87410
Phone (505) 334-6178 Fax: (505) 334-6170

DISTRICT IV
1220 S. St. Francis Dr., Santa Fe, NM 87505
Phone (505) 476-3460 Fax: (505) 476-3462

State of New Mexico
Energy, Minerals and Natural Resources Department

JUN 03 2019

Form C-102
Revised August 13, 2011

Submit one copy to appropriate
District Office

OIL CONSERVATION DIVISION
1220 South St. Francis Dr.
Santa Fe, New Mexico 87505

WELL LOCATION AND ACREAGE DEDICATION PLAT

☐ AMENDED REPORT

API Number 30-015-46081	Pool Code 98220	Pool Name Purple Sage; Wolfcamp
Property Code 325 747	Property Name TODD 2-24S-31E STATE	Well Number 434H
OGRID No. 373986	Operator Name TITUS OIL & GAS PRODUCTION, LLC	Elevation 3508'

Surface Location

UL or lot No.	Section	Township	Range	Lot Idn	FEET from the	SOUTH/South line	FEET from the	East/EAST line	County
N	2	24 S	31 E		210	SOUTH	2610	WEST	EDDY

Bottom Hole Location If Different From Surface

UL or lot No.	Section	Township	Range	Lot Idn	FEET from the	SOUTH/South line	FEET from the	East/EAST line	County
C	2	24 S	31 E		10	NORTH	2310	WEST	EDDY

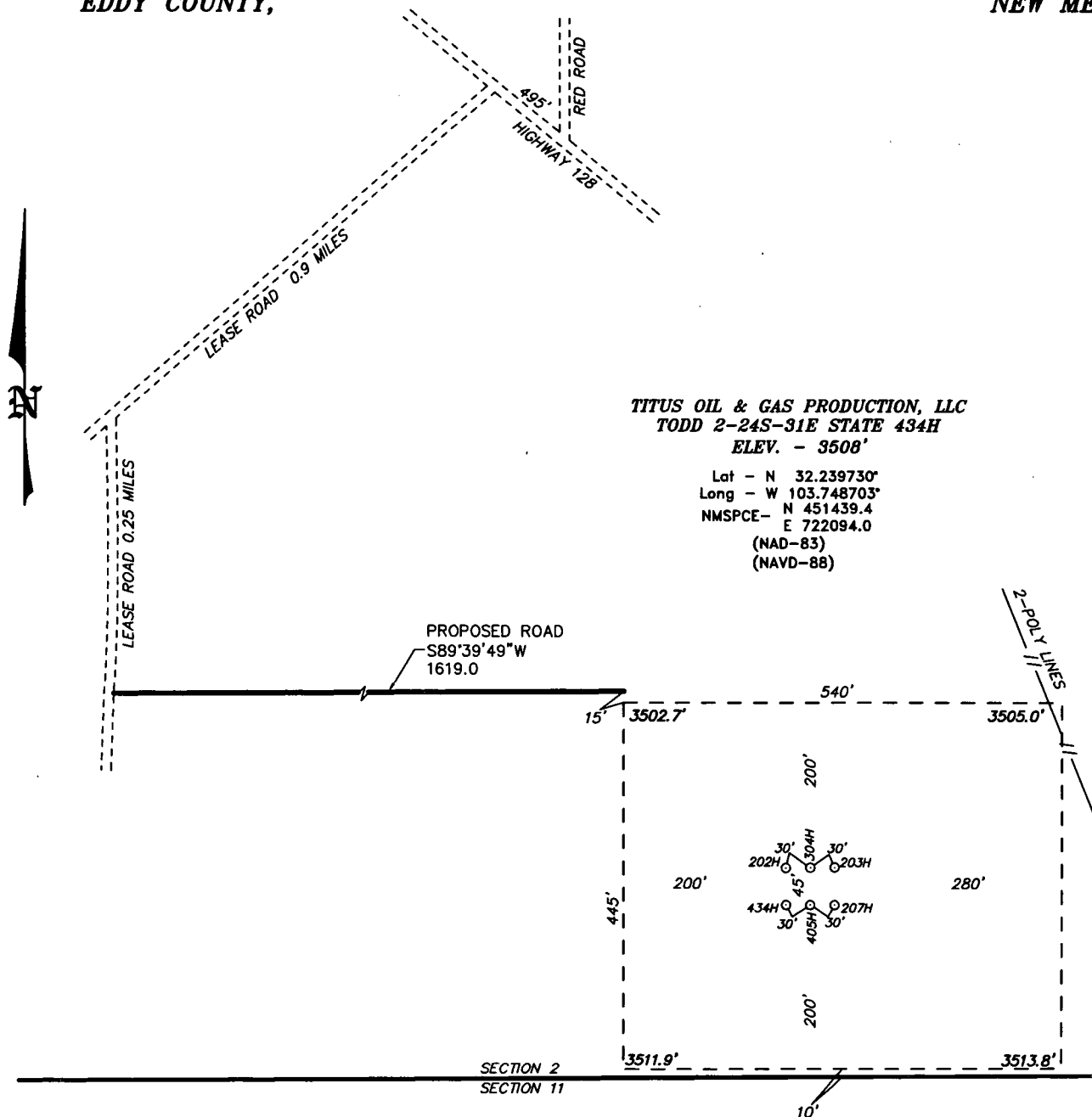
Dedicated Acres	Joint or Infill	Consolidation Code	Order No.
319.97ac			

**NO ALLOWABLE WILL BE ASSIGNED TO THIS COMPLETION UNTIL ALL INTERESTS HAVE BEEN CONSOLIDATED
OR A NON-STANDARD UNIT HAS BEEN APPROVED BY THE DIVISION**

<p>N456495.5 E719464.2 NAD 83</p> <p>2310'</p> <p>B.H. 10</p> <p>L.T.P. 0</p> <p>HORIZONTAL SPACING UNIT</p> <p>N456510.0 E722102.1 NAD 83</p> <p>N456524.5 E724740.8 NAD 83</p>	<p>PROPOSED BOTTOM HOLE LOCATION</p> <p>Lat - N 32.253642° Long - W 103.749650° NMSPCE- N 456498.2 E 721774.2 (NAD-83) (NAVD-88)</p>	<p>OPERATOR CERTIFICATION</p> <p>I hereby certify that the information contained herein is true and complete to the best of my knowledge and belief, and that this organization either owns a working interest or unleased mineral interest in the land including the proposed bottom hole location or has a right to drill this well at this location pursuant to a contract with an owner of such a mineral or working interest, or to a voluntary pooling agreement or a compulsory pooling order heretofore entered by the division.</p> <p><i>Ryan DeLong</i> 5/31/2019 Signature Date Ryan DeLong - Regulatory Manager Printed Name rdelong@titusoil.com Email Address</p>
	<p>LAST TAKE POINT 330' FNL & 2310' FWL</p> <p>Lat - N 32.252761° Long - W 103.749650° NMSPCE- N 456178.2 E 721775.4 (NAD-83) (NAVD-88)</p>	
	<p>FIRST TAKE POINT 330' FSL & 2310' FWL</p> <p>Lat - N 32.240061° Long - W 103.749672° NMSPCE- N 451557.6 E 721794.1 (NAD-83) (NAVD-88)</p>	
	<p>SURFACE HOLE LOCATION</p> <p>Lat - N 32.239730° Long - W 103.748703° NMSPCE- N 451439.4 E 722094.0 (NAD-83) (NAVD-88)</p>	
<p>N453854.3 E719474.2 NAD 83</p> <p>2610'</p> <p>F.T.P. 0</p> <p>N451229.6 E722125.9 NAD 83</p> <p>N451247.2 E724767.6 NAD 83</p>		<p>SURVEYOR CERTIFICATION</p> <p>I hereby certify that the well location shown on this plat was plotted from field notes of actual surveys made by me or under my supervision, and that the same is true and correct to the best of my belief.</p> <p>DATE SURVEYED MAY 29, 2019 Signature of Professional Surveyor Certificate No. 7977 BASIC SURVEY</p> <p>0' 500' 1000' 1500' 2000' SCALE: 1" = 1000' WO Num.: 34602</p>

RW 7-24-19

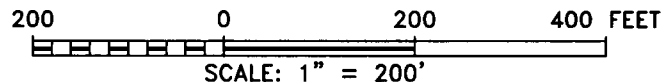
**SECTION 2, TOWNSHIP 24 SOUTH, RANGE 31 EAST, N.M.P.M.,
EDDY COUNTY, NEW MEXICO.**



Directions to Location:

FROM THE JUNCTION OF RED ROAD AND HIGHWAY 128 GO NORTHWEST 495 FEET TO LEASE ROAD, THEN GO SOUTHWEST 0.9 MILES, THEN GO SOUTH 0.25 MILES TO PROPOSED ROAD.

MALAGA, NM IS ±19 MILES TO THE WEST/SOUTHWEST OF LOCATION.



TITUS OIL & GAS PRODUCTION, LLC

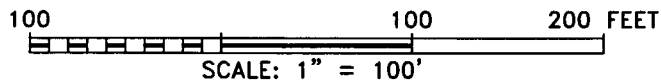
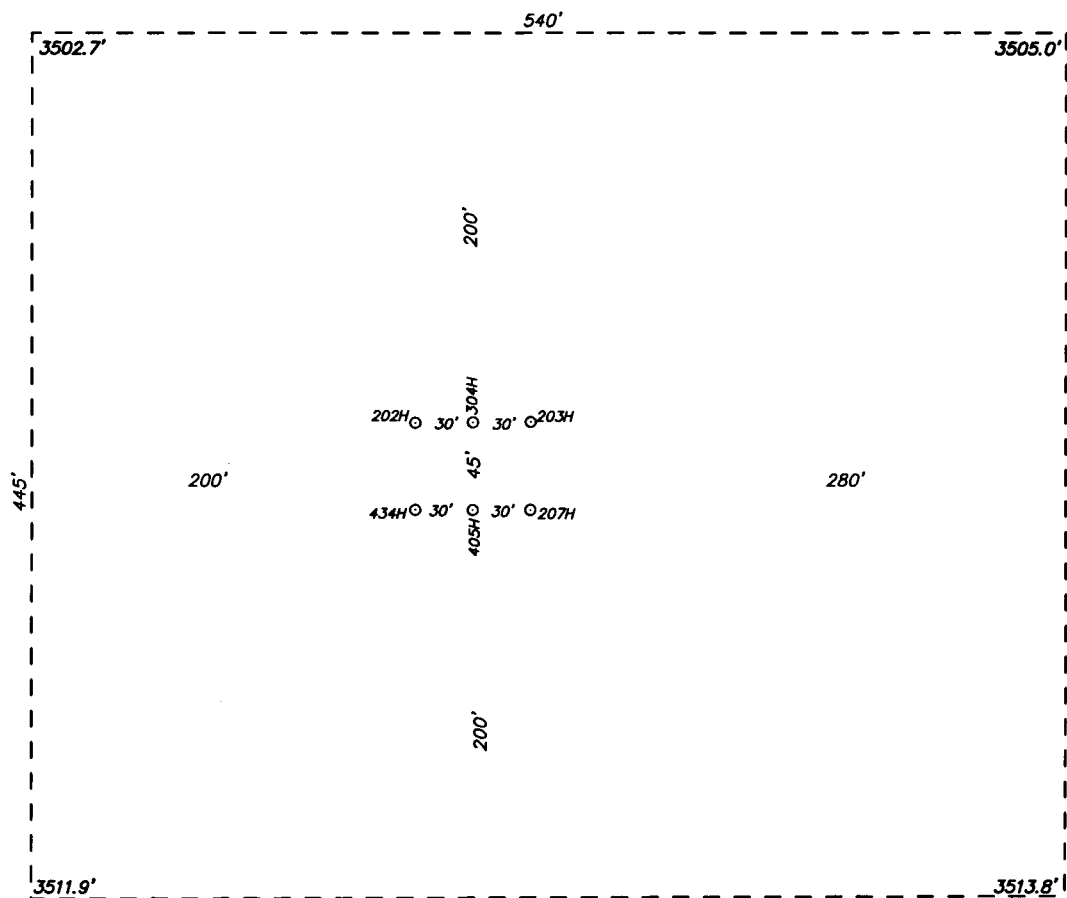
REF: TODD 2-24S-31E STATE 434H / WELL PAD TOPO

THE TODD 2-24S-31E STATE 434H LOCATED 210' FROM
THE SOUTH LINE AND 2610' FROM THE WEST LINE OF
SECTION 2, TOWNSHIP 24 SOUTH, RANGE 31 EAST,
N.M.P.M., EDDY COUNTY, NEW MEXICO.

**basin
surveys**
focused on excellence
in the oilfield

P.O. Box 1786
1120 N. West County Rd.
Hobbs, New Mexico 88241
(575) 393-7316 - Office
(575) 392-2206 - Fax
basinsurveys.com

**SECTION 2, TOWNSHIP 24 SOUTH, RANGE 31 EAST, N.M.P.M.,
EDDY COUNTY, NEW MEXICO.**



TITUS OIL & GAS PRODUCTION, LLC

REF: TODD 2-24S-31E STATE 434H / WELL PAD TOPO

THE TODD 2-24S-31E STATE 434H LOCATED 210' FROM
THE SOUTH LINE AND 2610' FROM THE WEST LINE OF
SECTION 2, TOWNSHIP 24 SOUTH, RANGE 31 EAST,
N.M.P.M., EDDY COUNTY, NEW MEXICO.

**basin
surveys**
focused on excellence
in the oilfield

P.O. Box 1786
1120 N. West County Rd.
Hobbs, New Mexico 88241
(575) 393-7316 - Office
(575) 392-2206 - Fax
basinsurveys.com

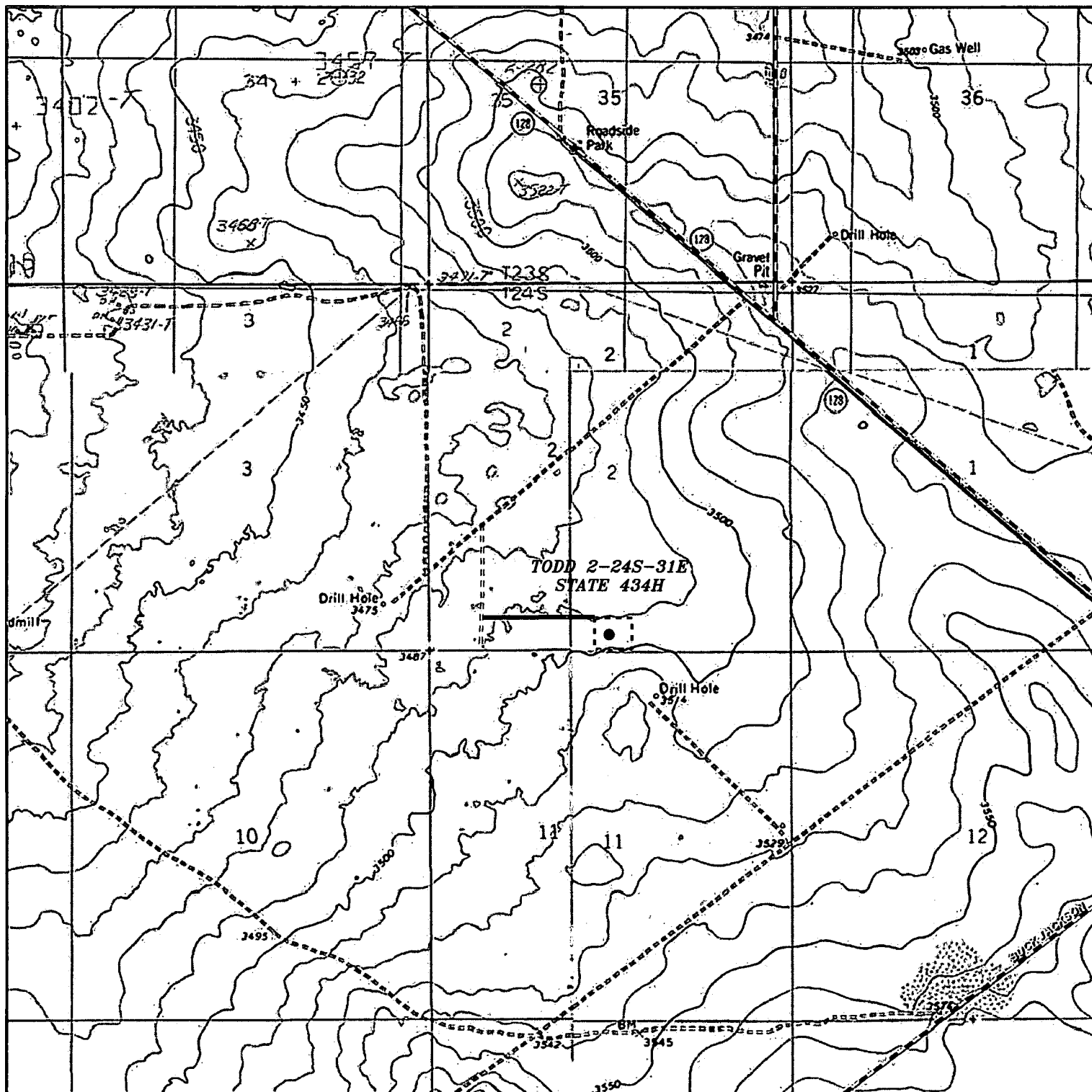
W.O. Number: 34602

Drawn By: J GOAD

Date: 5-30-2019

Survey Date: 5-29-2019

Sheet 1 of 1 Sheets



TODD 2-24S-31E STATE 434H

Located 210' FSL and 2610' FWL
 Section 2, Township 24 South, Range 31 East,
 N.M.P.M., Eddy County, New Mexico.

basin
surveys

focused on excellence
 in the oilfield

P.O. Box 1786
 1120 N. West County Rd.
 Hobbs, New Mexico 88241
 (575) 393-7316 - Office
 (575) 392-2206 - Fax
 basinsurveys.com

0' 1000' 2000' 3000' 4000'

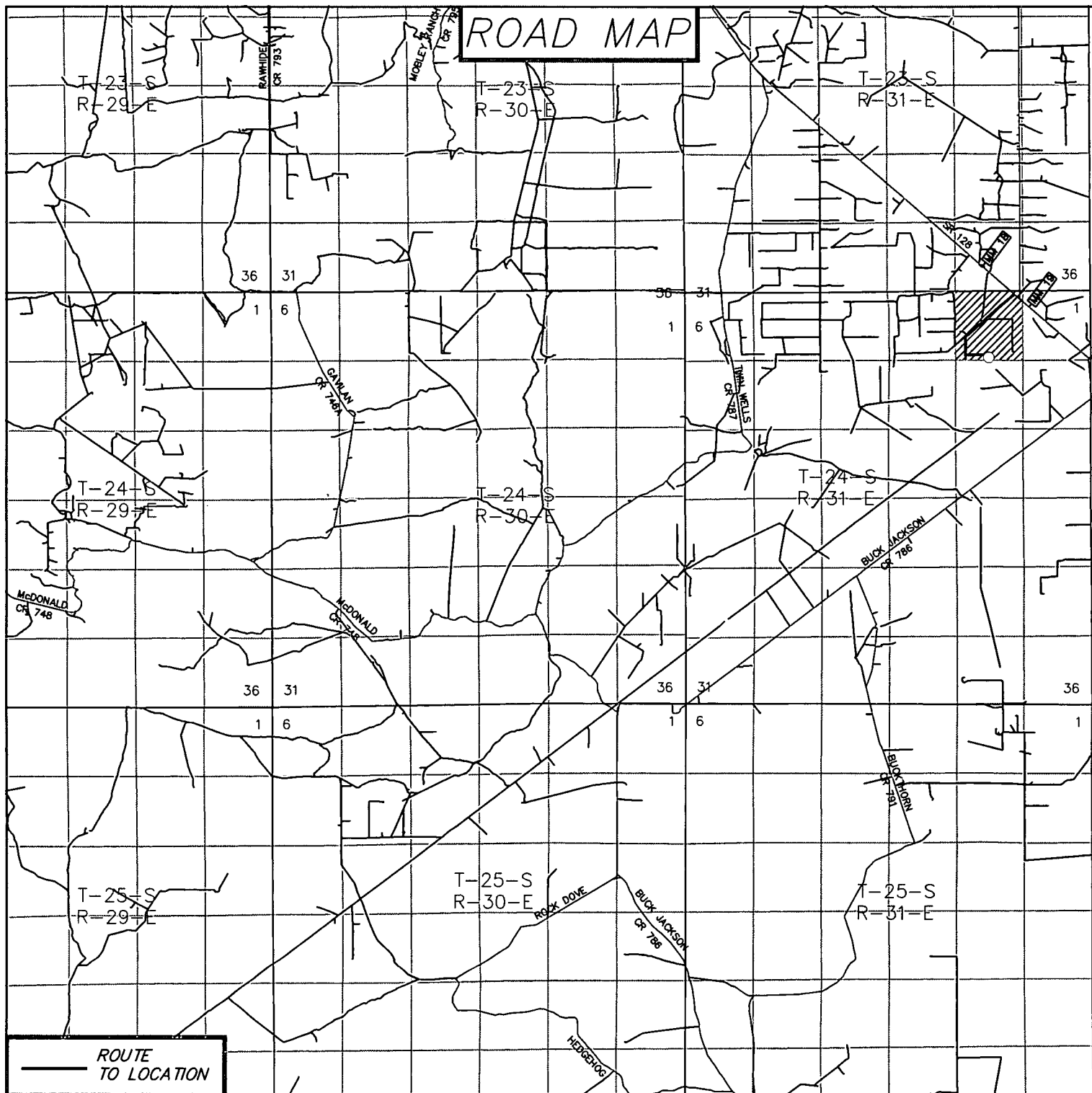
SCALE: 1" = 2000'

W.O. Number: JG 34602

Survey Date: 5-29-2019

YELLOW TINT - USA LAND
 BLUE TINT - STATE LAND
 NATURAL COLOR - FEE LAND

TITUS
OIL & GAS
PRODUCTION,
LLC



TODD 2-24S-31E STATE 434H

Located 210' FSL and 2610' FWL

Section 2, Township 24 South, Range 31 East,
N.M.P.M., Eddy County, New Mexico.

basin
surveys
focused on excellence
in the oilfield

P.O. Box 1786
1120 N. West County Rd.
Hobbs, New Mexico 88241
(575) 393-7316 - Office
(575) 392-2206 - Fax
basinsurveys.com

0 1 MI 2 MI 3 MI 4 MI
SCALE: 1" = 2 MILES

W.O. Number: JG 34602

Survey Date: 5-29-2019

YELLOW TINT - USA LAND
BLUE TINT - STATE LAND
NATURAL COLOR - FEE LAND

TITUS
OIL & GAS
PRODUCTION,
LLC

