

DISTRICT I
1625 N. French Dr., Hobbs, NM 88240
Phone: (575) 393-6161 Fax: (575) 393-0720
DISTRICT II
811 S. First St., Artesia, NM 88210
Phone: (575) 748-1283 Fax: (575) 748-9720
DISTRICT III
1000 Rio Brazos Road, Aztec, NM 87410
Phone: (505) 334-6178 Fax: (505) 334-6170
DISTRICT IV
1220 S. St. Francis Dr., Santa Fe, NM 87505
Phone: (505) 476-3460 Fax: (505) 476-3462

State of New Mexico
Energy, Minerals & Natural Resources Department
OIL CONSERVATION DIVISION
1220 South St. Francis Dr.
Santa Fe, New Mexico 87505

Form C-102
Revised August 1, 2011
Submit one copy to appropriate
District Office

RECEIVED
JUL 19 2019
DISTRICT-ARTESIA OGDEN
UNDEVELOPED REPORT

WELL LOCATION AND ACREAGE DEDICATION PLAT

| | | |
|-----------------------------------|---|---|
| API Number 30-015-45349 | Pool Code 98220 | Pool Name Purple Sage: Wolfcamp |
| Property Code 322433 | Property Name ALISA OGDEN 15 | Well Number 1H |
| OGRID No. 249099 | Operator Name CAZA OPERATING, LLC | Elevation 3127' |

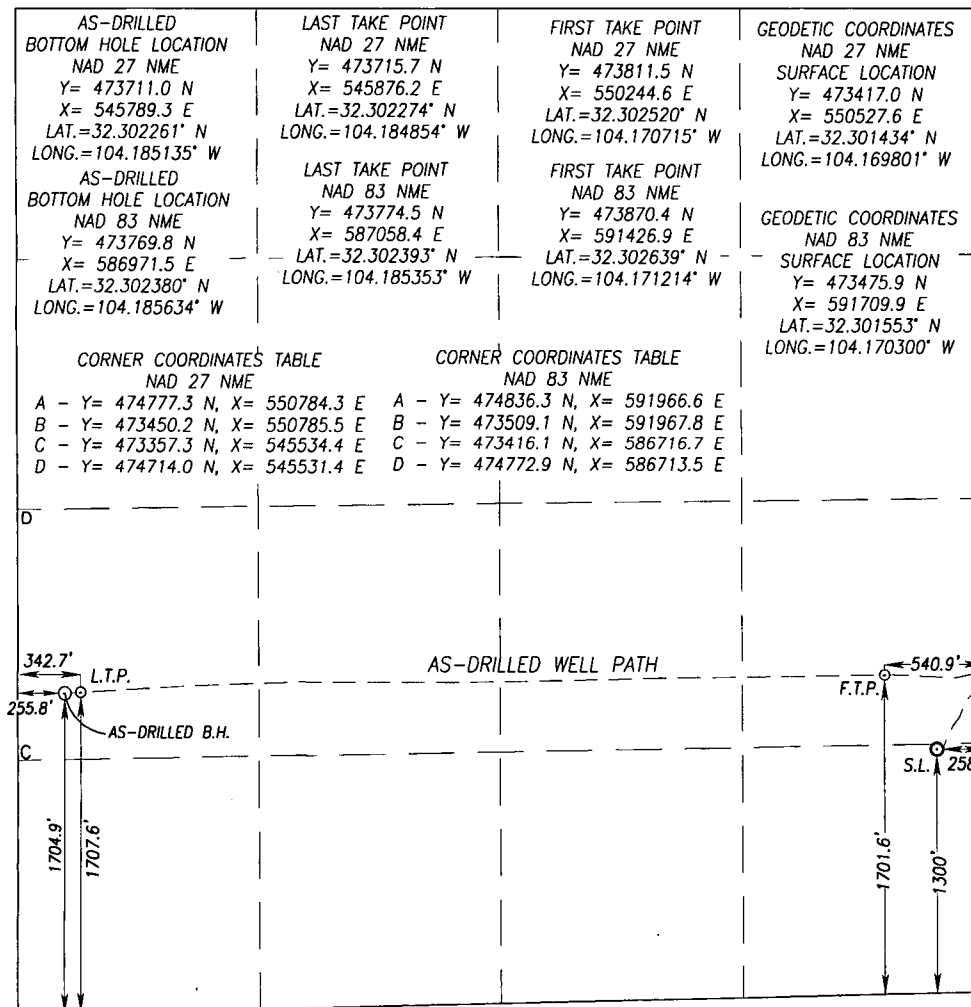
Surface Location

| | | | | | | | | | |
|---------------------------|----------------------|-------------------------|----------------------|---------|------------------------------|----------------------------------|-----------------------------|-------------------------------|-----------------------|
| UL or lot No. P | Section 15 | Township 23-S | Range 27-E | Lot Idn | Feet from the 1300 | North/South line SOUTH | Feet from the 258 | East/West line EAST | County EDDY |
|---------------------------|----------------------|-------------------------|----------------------|---------|------------------------------|----------------------------------|-----------------------------|-------------------------------|-----------------------|

AS-Drilled Bottom Hole Location If Different From Surface

| | | | | | | | | | |
|-------------------------------|----------------------|-------------------------|----------------------|---------|--------------------------------|----------------------------------|-------------------------------|-------------------------------|-----------------------|
| UL or lot No. L | Section 15 | Township 23-S | Range 27-E | Lot Idn | Feet from the 1704.9 | North/South line SOUTH | Feet from the 255.8 | East/West line WEST | County EDDY |
| Dedicated Acres 320 | Joint or Infill | Consolidation Code | Order No. | | | | | | |

NO ALLOWABLE WILL BE ASSIGNED TO THIS COMPLETION UNTIL ALL INTERESTS HAVE BEEN CONSOLIDATED OR A NON-STANDARD UNIT HAS BEEN APPROVED BY THE DIVISION



OPERATOR CERTIFICATION

I hereby certify that the information herein is true and complete to the best of my knowledge and belief, and that this organization either owns a working interest or unleased mineral interest in the land including the proposed bottom hole location or has a right to drill this well at this location pursuant to a contract with an owner of such mineral or working interest, or to a voluntary pooling agreement or a compulsory pooling order heretofore entered by the division.

Signature
Steve Morris
Printed Name
steve.morris@morcoreengineering.com
E-mail Address
07/19/2019
Date

SURVEYOR CERTIFICATION

I hereby certify that the well location shown on this plat was plotted from the notes of actual surveys made by me or under my supervision, and that the same is true and correct to the best of my knowledge.

Date of Survey
3239
Signature
Ronald J. Eidson
Seal of Professional Surveyor
SEPTEMBER 12 2018
Certificate Number
Gary G. Eidson 12641
Ronald J. Eidson 3239
LSL Rel. 18.13.1224 JWSC W.O. 19.13.0636