

District I  
1625 N. French Dr., Hobbs, NM 88240  
Phone: (575) 393-6161 Fax: (575) 393-0720  
District II  
811 S. First St., Artesia, NM 88210  
Phone: (575) 748-1283 Fax: (575) 748-9720  
District III  
1000 Rio Brazos Road, Aztec, NM 87410  
Phone: (505) 334-6178 Fax: (505) 334-6170  
District IV  
1220 S. St. Francis Dr., Santa Fe, NM 87505  
Phone: (505) 476-3460 Fax: (505) 476-3462

State of New Mexico  
Energy, Minerals & Natural Resources Department  
**OIL CONSERVATION DIVISION**  
1220 South St. Francis Dr.  
Santa Fe, NM 87505

Form C-102  
Revised August 1, 2011  
Submit one copy to appropriate  
District Office

☐ AMENDED REPORT

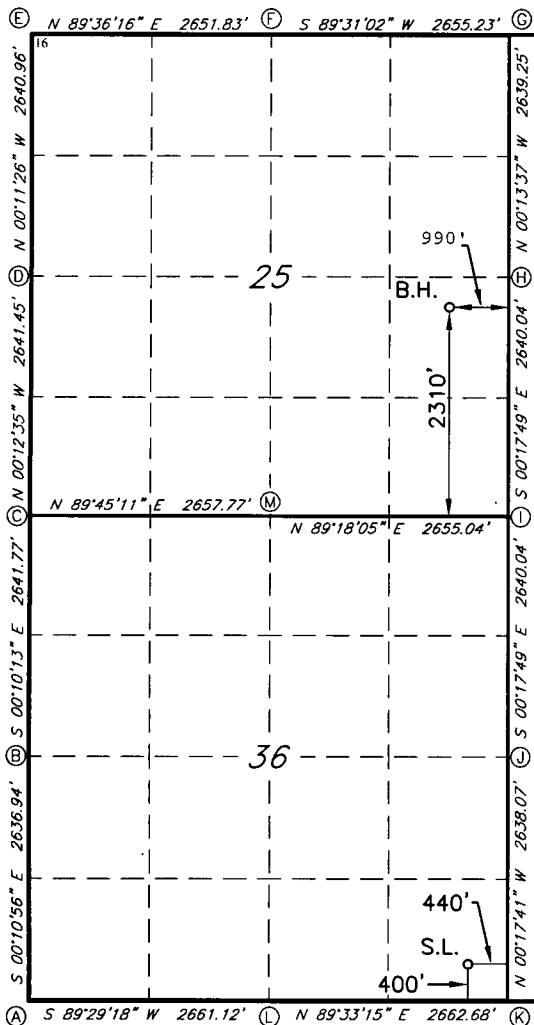
**WELL LOCATION AND ACREAGE DEDICATION PLAT**

<sup>1</sup> API Number <b>30-015-46211</b>		<sup>2</sup> Pool Code <b>98220</b>		<sup>3</sup> Pool Name <b>PURPLE SAGE WOLFCAMP GAS</b>	
<sup>4</sup> Property Code <b>326025</b>		<sup>5</sup> Property Name <b>COLTRANE 36/25 W1PI FEDERAL COM</b>			<sup>6</sup> Well Number <b>2H</b>
<sup>7</sup> OGRID NO. <b>14744</b>		<sup>8</sup> Operator Name <b>MEWBOURNE OIL COMPANY</b>			<sup>9</sup> Elevation <b>3301'</b>

<sup>10</sup> Surface Location									
UL or lot no.	Section	Township	Range	Lot Idn	Feet from the	North/South line	Feet from the	East/West line	County
<b>P</b>	<b>36</b>	<b>25S</b>	<b>31E</b>		<b>400</b>	<b>SOUTH</b>	<b>440</b>	<b>EAST</b>	<b>EDDY</b>

<sup>11</sup> Bottom Hole Location If Different From Surface									
UL or lot no.	Section	Township	Range	Lot Idn	Feet from the	North/South line	Feet from the	East/West line	County
<b>I</b>	<b>25</b>	<b>25S</b>	<b>31E</b>		<b>2310</b>	<b>SOUTH</b>	<b>990</b>	<b>EAST</b>	<b>EDDY</b>
<sup>12</sup> Dedicated Acres <b>480</b>		<sup>13</sup> Joint or Infill		<sup>14</sup> Consolidation Code		<sup>15</sup> Order No.			

No allowable will be assigned to this completion until all interest have been consolidated or a non-standard unit has been approved by the division.



**GEODETIC DATA**  
NAD 83 GRID - NM EAST  
**SURFACE LOCATION**  
N 393605.7 - E 729908.8  
LAT: 32.0806390° N  
LONG: 103.7244870° W  
**BOTTOM HOLE**  
N 400784 - E 729322  
LAT: 32.085913° N  
LONG: 103.726173° W  
**CORNER DATA**  
NAD 83 GRID - NM EAST  
A: FOUND BRASS CAP "1916"  
N 393164.8 - E 725028.3  
B: FOUND BRASS CAP "1939"  
N 395801.2 - E 725019.9  
C: FOUND BRASS CAP "1939"  
N 398442.3 - E 725012.1  
D: FOUND BRASS CAP "1939"  
N 401083.2 - E 725002.4  
E: FOUND BRASS CAP "1939"  
N 403723.6 - E 724993.6  
F: FOUND BRASS CAP "1939"  
N 403741.9 - E 727644.8  
G: FOUND 1/2" REBAR  
N 403764.2 - E 730299.4  
H: FOUND BRASS CAP "1916"  
N 401125.6 - E 730309.8  
I: CALCULATED CORNER  
N 398486.2 - E 730323.5  
J: FOUND BRASS CAP "1916"  
N 395846.7 - E 730337.2  
K: FOUND BRASS CAP "1916"  
N 393209.3 - E 730350.7  
L: FOUND BRASS CAP "1916"  
N 393188.6 - E 727688.7  
M: FOUND BRASS CAP "1939"  
N 398453.8 - E 727669.2

**<sup>17</sup> OPERATOR CERTIFICATION**

I hereby certify that the information contained herein is true and complete to the best of my knowledge and belief, and that this organization either owns a working interest or unleased mineral interest in the land including the proposed bottom hole location or has a right to drill this well at this location pursuant to a contract with an owner of such a mineral or working interest, or to a voluntary pooling agreement or a compulsory pooling order heretofore entered by the division.

Signature Bradley Bishop Date 5-24-18

Printed Name BRADLEY BISHOP

E-mail Address BBISHOP@MEWBOURNE.COM

**<sup>18</sup> SURVEYOR CERTIFICATION**

I hereby certify that the well location shown on this plat was plotted from field notes of actual surveys made by me or under my supervision, and that the same is true and correct to the best of my belief.

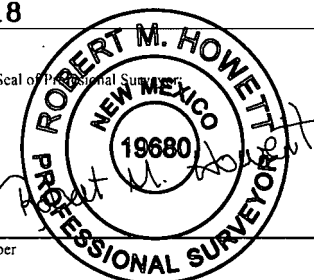
5-9-18

Date of Survey

Signature and Seal of Professional Surveyor

19680

Certificate Number



RRC - Job No.:

LS1804489

RW 8-8-19