

DISTRICT I  
1625 N. French Dr., Hobbs, NM 88240  
Phone: (575) 393-6161 Fax: (575) 393-0720

DISTRICT II  
811 S. First St., Artesia, NM 88210  
Phone: (575) 748-1283 Fax: (575) 748-9720

DISTRICT III  
1000 Rio Brazos Road, Aztec, NM 87410  
Phone: (505) 334-6178 Fax: (505) 334-6170

DISTRICT IV  
1220 S. St. Francis Dr., Santa Fe, NM 87505  
Phone: (505) 476-3460 Fax: (505) 476-3462

State of New Mexico  
Energy, Minerals & Natural Resources Department  
OIL CONSERVATION DIVISION  
1220 South St. Francis Dr.  
Santa Fe, New Mexico 87505

Form C-102  
Revised August 1, 2011  
Submit one copy to appropriate  
District Office

AMENDED REPORT

WELL LOCATION AND ACREAGE DEDICATION PLAT

API Number 30-015- <b>46217</b>	Pool Code 97565	Pool Name N. SEVEN RIVERS; GLORIETA-YESO
Property Code <b>325865</b>	Property Name LAKEWOOD FEDERAL COM	Well Number 11H
OGRID No. <b>371755</b>	Operator Name PERCUSSION PETROLEUM OPERATING, LLC	Elevation 3478'

**328947**

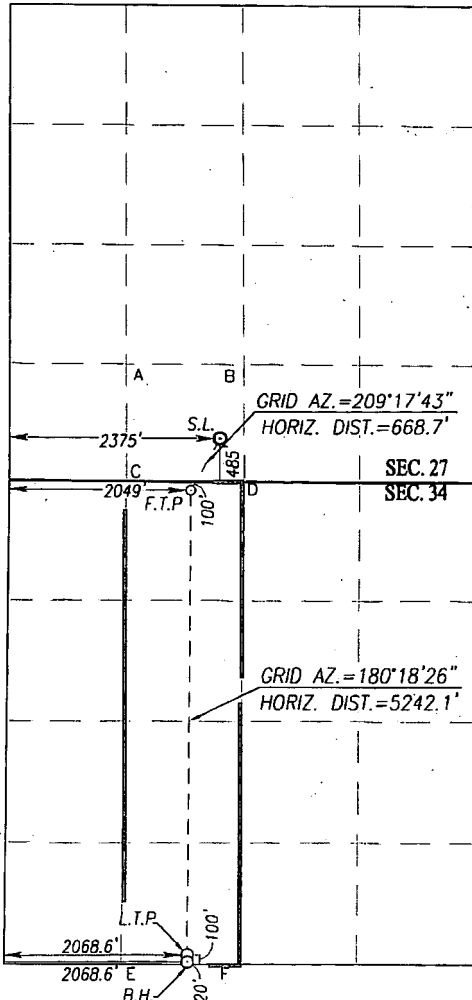
UL or lot No.	Section	Township	Range	Lot Idn	Feet from the	North/South line	Feet from the	East/West line	County
N	27	19-S	25-E		485	SOUTH	2375	WEST	EDDY

Bottom Hole Location If Different From Surface

UL or lot No.	Section	Township	Range	Lot Idn	Feet from the	North/South line	Feet from the	East/West line	County
N	34	19-S	25-E		20	SOUTH	2068.6	WEST	EDDY

Dedicated Acres 160	Joint or Infill	Consolidation Code C	Order No.
------------------------	-----------------	-------------------------	-----------

NO ALLOWABLE WILL BE ASSIGNED TO THIS COMPLETION UNTIL ALL INTERESTS HAVE BEEN CONSOLIDATED OR A NON-STANDARD UNIT HAS BEEN APPROVED BY THE DIVISION



SCALE: 1"=2000'

<b>GEODETTIC COORDINATES</b> NAD 83 NME SURFACE LOCATION Y=591347.9 N X=498256.2 E LAT.=32.625587° N LONG.=104.473269° W	<b>GEODETTIC COORDINATES</b> NAD 27 NME SURFACE LOCATION Y=591355.1 N X=457035.3 E LAT.=32.625661° N LONG.=104.472887° W
<b>FIRST TAKE POINT</b> NAD 83 NME Y= 590832.9 N X= 497886.7 E LAT.=32.624170° N LONG.=104.474467° W	<b>FIRST TAKE POINT</b> NAD 27 NME Y= 590772.1 N X= 456708.2 E LAT.=32.624057° N LONG.=104.473947° W
<b>CORNER COORDINATES TABLE</b> NAD 27 NME	
A - Y= 592208.5 N, X= 455983.1 E	B - Y= 592200.1 N, X= 457305.0 E
C - Y= 590876.2 N, X= 455985.8 E	D - Y= 590868.6 N, X= 457311.0 E
E - Y= 585514.1 N, X= 455932.2 E	F - Y= 585509.7 N, X= 457253.0 E
<b>CORNER COORDINATES TABLE</b> NAD 83 NME	
A - Y= 592269.3 N, X= 497161.6 E	B - Y= 592260.9 N, X= 498483.5 E
C - Y= 590937.0 N, X= 497164.3 E	D - Y= 590929.4 N, X= 498489.5 E
E - Y= 585574.7 N, X= 497110.7 E	F - Y= 585570.3 N, X= 498431.5 E
<b>LAST TAKE POINT</b> NAD 83 NME Y= 585672.2 N X= 497859.0 E LAT.=32.609985° N LONG.=104.474535° W	<b>LAST TAKE POINT</b> NAD 27 NME Y= 585611.6 N X= 456680.5 E LAT.=32.609872° N LONG.=104.474015° W
<b>BOTTOM HOLE LOCATION</b> NAD 83 NME Y= 585592.2 N X= 497858.6 E LAT.=32.609765° N LONG.=104.474536° W	<b>BOTTOM HOLE LOCATION</b> NAD 27 NME Y= 585531.6 N X= 456680.0 E LAT.=32.609652° N LONG.=104.474016° W

OPERATOR CERTIFICATION

I hereby certify that the information herein is true and complete to the best of my knowledge and belief, and that this organization either owns a working interest or unleased mineral interest in the land including the proposed bottom hole location or has a right to drill this well at this location pursuant to a contract with an owner of such mineral or working interest, or to a voluntary pooling agreement or a compulsory pooling order heretofore entered by the division.

*Brian Wood* 7-29-18  
Signature Date

BRIAN WOOD  
Printed Name  
brian@permitswest.com  
E-mail Address 505 466-8120

SURVEYOR CERTIFICATION

I hereby certify that the well location shown on this plat was plotted from field notes of actual surveys made by me or under my supervision, and that the same is true and correct to the best of my belief.

FEBRUARY 7, 2018  
Date of Survey  
Signature of Professional Surveyor  
*Ronald J. Eidson*  
REG. SURVEYOR  
3239  
Certificate Number  
Gary G. Eidson 12641  
Ronald J. Eidson 3239  
ACK REV. 3/26/18 JWSC W.O.: 18.11.0114

RUP 8-13-19