

UNITED STATES
DEPARTMENT OF THE INTERIOR
BUREAU OF LAND MANAGEMENT

RECEIVED
JUL 28 2018
DISTRICT OFFICE
MESA

FORM APPROVED
OMB No. 1004-0137
Expires: July 31, 2010

WELL COMPLETION OR RECOMPLETION REPORT AND LOGS

5. Lease Serial No. NMNM112907

6. If Indian, Allottee or Tribe Name

7. Unit or CA Agreement Name and No. NMNM139294

8. Lease Name and Well No. ROAD RUNNER FEDERAL COM 23H

9. API Well No. 30-015-45184-00-S1

10. Field and Pool, or Exploratory PURPLE SAGE-WOLFCAMP (GAS)

11. Sec., T., R., M., or Block and Survey or Area Sec 36 T25S R26E Mer NMP

12. County or Parish EDDY

13. State NM

14. Date Spudded 10/19/2018

15. Date T.D. Reached 11/22/2018

16. Date Completed 02/12/2019
 D & A Ready to Prod.

17. Elevations (DF, KB, RT, GL)* 3351 GL

18. Total Depth: MD 18991 TVD 8936

19. Plug Back T.D.: MD 18919 TVD 8936

20. Depth Bridge Plug Set: MD 18919 TVD 8936

21. Type Electric & Other Mechanical Logs Run (Submit copy of each)

22. Was well cored? No Yes (Submit analysis)
Was DST run? No Yes (Submit analysis)
Directional Survey? No Yes (Submit analysis)

23. Casing and Liner Record (Report all strings set in well)

| Hole Size | Size/Grade | Wt. (#/ft.) | Top (MD) | Bottom (MD) | Stage Cementer Depth | No. of Sk. & Type of Cement | Slurry Vol. (BBL) | Cement Top* | Amount Pulled |
|-----------|------------|-------------|----------|-------------|----------------------|-----------------------------|-------------------|-------------|---------------|
| 26.000 | 20.000 J55 | 106.5 | 0 | 384 | | 850 | | 0 | |
| 17.500 | 13.375 J55 | 61.0 | 0 | 2058 | | 1450 | | 0 | |
| 12.250 | 9.625 L80 | 47.0 | 0 | 8330 | | 1600 | | 0 | |
| 8.500 | 5.500 P110 | 20.0 | 0 | 18976 | | 3750 | | 0 | |

24. Tubing Record

| Size | Depth Set (MD) | Packer Depth (MD) | Size | Depth Set (MD) | Packer Depth (MD) | Size | Depth Set (MD) | Packer Depth (MD) |
|-------|----------------|-------------------|------|----------------|-------------------|------|----------------|-------------------|
| 2.875 | 8490 | 8480 | | | | | | |

25. Producing Intervals

| Formation | Top | Bottom | Perforated Interval | Size | No. Holes | Perf. Status |
|-------------|------|--------|---------------------|------|-----------|--------------|
| A) WOLFCAMP | 9170 | 18826 | 9170 TO 18826 | | 1760 | OPEN |
| B) | | | | | | |
| C) | | | | | | |
| D) | | | | | | |

26. Perforation Record

| Formation | Top | Bottom | Perforated Interval | Size | No. Holes | Perf. Status |
|-------------|------|--------|---------------------|------|-----------|--------------|
| A) WOLFCAMP | 9170 | 18826 | 9170 TO 18826 | | 1760 | OPEN |

27. Acid, Fracture, Treatment, Cement Squeeze, Etc.

| Depth Interval | Amount and Type of Material |
|----------------|-----------------------------|
| 9170 TO 18826 | SEE ATTACHED |

28. Production - Interval A

| Date First Produced | Test Date | Hours Tested | Test Production | Oil BBL | Gas MCF | Water BBL | Oil Gravity Corr. API | Gas Gravity | Production Method |
|---------------------|-------------------|--------------|-----------------|---------|---------|-----------|-----------------------|-------------|-------------------|
| 02/12/2019 | 02/12/2019 | 24 | → | 125.0 | 392.0 | 4539.0 | | | GAS LIFT |
| Choke Size | Tbg. Press. Flwg. | Csg. Press. | 24 Hr. Rate | Oil BBL | Gas MCF | Water BBL | Gas:Oil Ratio | Well Status | |
| 24/64 | SI 1650 | 1200.0 | → | 125 | 392 | 4539 | | PGW | |

28a. Production - Interval B

| Date First Produced | Test Date | Hours Tested | Test Production | Oil BBL | Gas MCF | Water BBL | Oil Gravity Corr. API | Gas Gravity | Production Method |
|---------------------|-------------------|--------------|-----------------|---------|---------|-----------|-----------------------|-------------|-------------------|
| | | | → | | | | | | |
| Choke Size | Tbg. Press. Flwg. | Csg. Press. | 24 Hr. Rate | Oil BBL | Gas MCF | Water BBL | Gas:Oil Ratio | Well Status | |
| | SI | | → | | | | | | |

ACCEPTED FOR RECORD

JUN 18 2019

Dinah Nunez

BUREAU OF LAND MANAGEMENT
CARLSBAD FIELD OFFICE

(See Instructions and spaces for additional data on reverse side)

ELECTRONIC SUBMISSION #457010 VERIFIED BY THE BLM WELL INFORMATION SYSTEM

** BLM REVISED ** BLM REVISED ** BLM REVISED ** BLM REVISED ** BLM REVISED **

Reclamation Due: 8/12/2019

AB
8/15/19

28b. Production - Interval C

| | | | | | | | | | |
|---------------------|----------------------|--------------|-----------------|---------|---------|-----------|-----------------------|-------------|-------------------|
| Date First Produced | Test Date | Hours Tested | Test Production | Oil BBL | Gas MCF | Water BBL | Oil Gravity Corr. API | Gas Gravity | Production Method |
| Choke Size | Tbg. Press. Flwg. SI | Csg. Press. | 24 Hr. Rate | Oil BBL | Gas MCF | Water BBL | Gas:Oil Ratio | Well Status | |

28c. Production - Interval D

| | | | | | | | | | |
|---------------------|----------------------|--------------|-----------------|---------|---------|-----------|-----------------------|-------------|-------------------|
| Date First Produced | Test Date | Hours Tested | Test Production | Oil BBL | Gas MCF | Water BBL | Oil Gravity Corr. API | Gas Gravity | Production Method |
| Choke Size | Tbg. Press. Flwg. SI | Csg. Press. | 24 Hr. Rate | Oil BBL | Gas MCF | Water BBL | Gas:Oil Ratio | Well Status | |

29. Disposition of Gas(Sold, used for fuel, vented, etc.)
SOLD

30. Summary of Porous Zones (Include Aquifers):

Show all important zones of porosity and contents thereof: Cored intervals and all drill-stem tests, including depth interval tested, cushion used, time tool open, flowing and shut-in pressures and recoveries.

31. Formation (Log) Markers

| Formation | Top | Bottom | Descriptions, Contents, etc. | Name | Top |
|-----------------|------|--------|------------------------------|-----------------|-------------|
| | | | | | Meas. Depth |
| TOP SALT | 445 | | | TOP SALT | 445 |
| BASE OF SALT | 1826 | | | BASE OF SALT | 1826 |
| LAMAR | 2018 | | | LAMAR | 2018 |
| BELL CANYON | 2060 | | | BELL CANYON | 2060 |
| CHERRY CANYON | 2901 | | | CHERRY CANYON | 2901 |
| BRUSHY CANYON | 4010 | | | BRUSHY CANYON | 4010 |
| BONE SPRING 1ST | 6570 | | | BONE SPRING 1ST | 6570 |
| BONE SPRING 3RD | 8425 | | | BONE SPRING 3RD | 8425 |

32. Additional remarks (include plugging procedure):
Wolfcamp 8827

33. Circle enclosed attachments:

- | | | | |
|---|--------------------|---------------|-----------------------|
| 1. Electrical/Mechanical Logs (1 full set req'd.) | 2. Geologic Report | 3. DST Report | 4. Directional Survey |
| 5. Sundry Notice for plugging and cement verification | 6. Core Analysis | 7. Other: | |

34. I hereby certify that the foregoing and attached information is complete and correct as determined from all available records (see attached instructions):

Electronic Submission #457010 Verified by the BLM Well Information System.
For COG OPERATING LLC, sent to the Carlsbad
Committed to AFMSS for processing by DEBORAH HAM on 05/20/2019 (19DMH0067SE)

Name (please print) AMANDA AVERY Title AUTHORIZED REPRESENTATIVE

Signature _____ (Electronic Submission) Date 03/06/2019

Title 18 U.S.C. Section 1001 and Title 43 U.S.C. Section 1212, make it a crime for any person knowingly and willfully to make to any department or agency of the United States any false, fictitious or fraudulent statements or representations as to any matter within its jurisdiction.

**** REVISED ** REVISED ** REVISED ** REVISED ** REVISED ** REVISED ** REVISED ** REVISED ****

DISTRICT I
 1625 N. FRENCH DR., HOBBS, NM 88240
 Phone: (575) 393-6161 Fax: (575) 393-0720

DISTRICT II
 811 S. FIRST ST., ARTESIA, NM 88210
 Phone: (575) 748-1283 Fax: (575) 748-9720

DISTRICT III
 1000 RIO BRAZOS RD., AZTEC, NM 87410
 Phone: (505) 334-6178 Fax: (505) 334-6170

DISTRICT IV
 1220 S. ST. FRANCIS DR., SANTA FE, NM 87505
 Phone: (505) 476-3480 Fax: (505) 476-3482

State of New Mexico
 Energy, Minerals & Natural Resources Department

OIL CONSERVATION DIVISION
 1220 SOUTH ST. FRANCIS DR.
 Santa Fe, New Mexico 87505

Form C-102
 Revised August 1, 2011
 Submit one copy to appropriate
 District Office

AMENDED REPORT

WELL LOCATION AND ACREAGE DEDICATION PLAT

| | | | |
|----------------------------|---|--------------------|------------------------------------|
| API Number 30-015-45184 | | Pool Code 98220 | Pool Name Purple Sage; Wolfcamp |
| Property Code 316775 | Property Name ROADRUNNER FEDERAL COM | | Well Number 23H |
| OGRID No. 229137 | Operator Name COG OPERATING, LLC | | Elevation 3350.6' |

Surface Location

| UL or lot No. | Section | Township | Range | Lot Idn | Feet from the | North/South line | Feet from the | East/West line | County |
|---------------|---------|----------|-------|---------|---------------|------------------|---------------|----------------|--------|
| N | 36 | 25-S | 26-E | | 210 | SOUTH | 2180 | WEST | EDDY |

Bottom Hole Location If Different From Surface

| UL or lot No. | Section | Township | Range | Lot Idn | Feet from the | North/South line | Feet from the | East/West line | County |
|---------------|---------|----------|-------|---------|---------------|------------------|---------------|----------------|--------|
| C | 25 | 25-S | 26-E | | 201 | NORTH | 1982 | WEST | EDDY |

| | | | |
|-----------------|-----------------|--------------------|-----------|
| Dedicated Acres | Joint or Infill | Consolidation Code | Order No. |
| | | | |

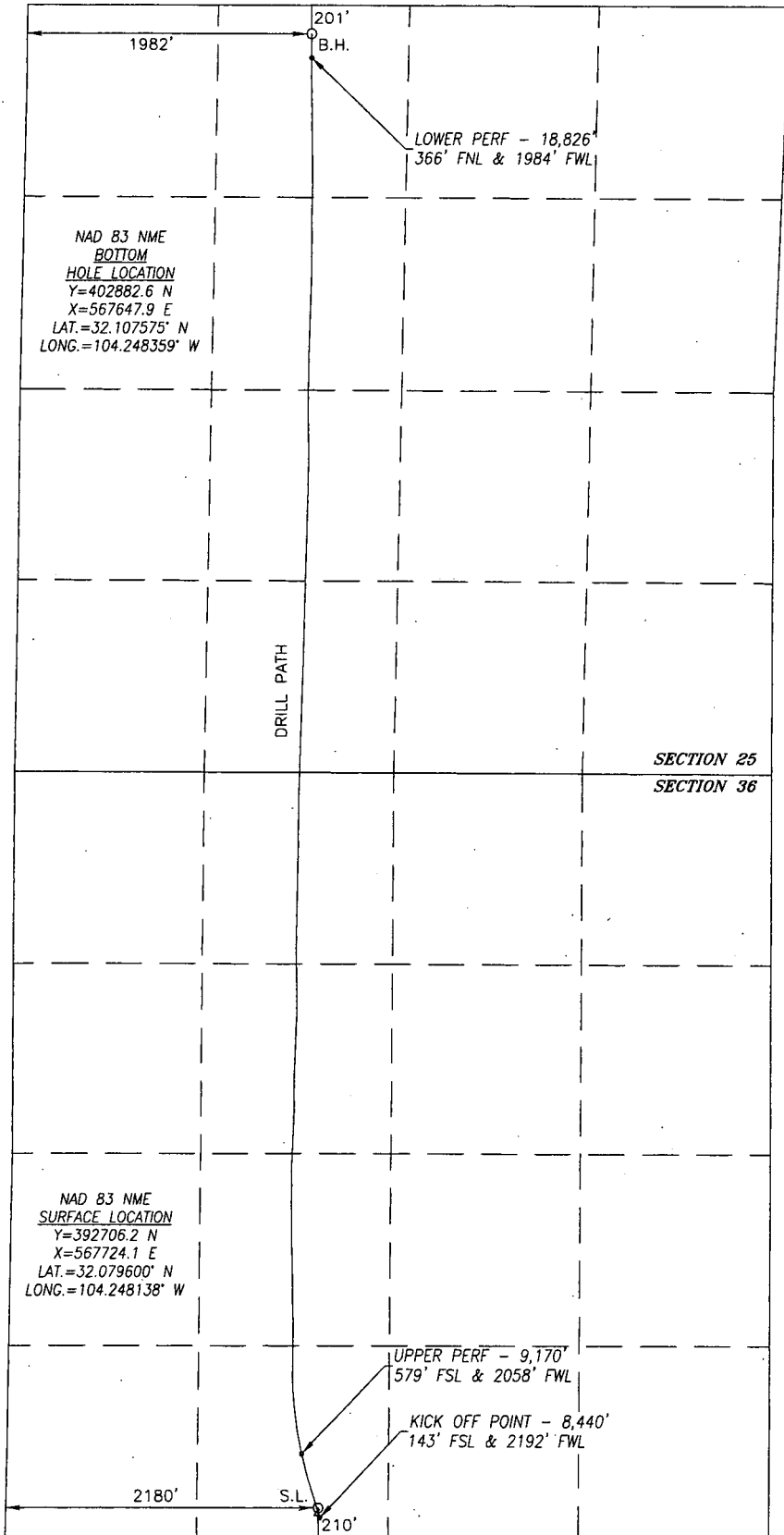
NO ALLOWABLE WILL BE ASSIGNED TO THIS COMPLETION UNTIL ALL INTERESTS HAVE BEEN CONSOLIDATED
 OR A NON-STANDARD UNIT HAS BEEN APPROVED BY THE DIVISION

SEE PAGE 2

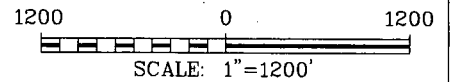
PAGE 1 OF 2
 W.O. #19-219 DRAWN BY: WN

RNP 8-15-19

| | | |
|-------------------------|---|----------------------|
| Property Code 316775 | Property Name ROADRUNNER FEDERAL COM | Well Number 23H |
| OGRID No. 229137 | Operator Name COG OPERATING, LLC | Elevation 3350.6' |



BOREPATH SHOWN HEREON IS BASED ON DIRECTIONAL SURVEY REPORT PROVIDED BY COG OPERATING, LLC FOR THE ROADRUNNER FEDERAL COM #23H SUPPLIED TO HARCROW SURVEYING, LLC ON FEBRUARY 6, 2019



OPERATOR CERTIFICATION

I hereby certify that the information herein is true and complete to the best of my knowledge and belief, and that this organization either owns a working interest or unleased mineral interest in the land including the proposed bottom hole location or has a right to drill this well at this location pursuant to a contract with an owner of such mineral or working interest, or to a voluntary pooling agreement or a compulsory pooling order heretofore entered by the division.

3/5/19
Date

Signature
Amanda Avery
Printed Name
aavery@concho.com
E-mail Address

SURVEYOR CERTIFICATION

I hereby certify that the well location shown on this plat was plotted from field notes of actual surveys made by me or under my supervision, and that the same is true and correct to the best of my belief.

MAR. 1, 2018/NOV. 28, 2018
Date of Survey/Date of Geographic Survey

Signature & Seal of Professional Surveyor

Chad Hargrow 2/18/19
Certificate No. CHAD HARCROW 17777