

District I
1625 N. French Dr., Hobbs, NM 88240
District II
811 S. First St., Artesia, NM 88210
District III
1000 Rio Brazos Rd., Aztec, NM 87410
District IV
1220 S. St. Francis Dr., Santa Fe, NM 87505

State of New Mexico
Energy, Minerals & Natural Resources

Form C-104
Revised August 1, 2011

Oil Conservation Division
1220 South St. Francis Dr.
Santa Fe, NM 87505

Submit one copy to appropriate District Office

☐ AMENDED REPORT

I. REQUEST FOR ALLOWABLE AND AUTHORIZATION TO TRANSPORT

| | | |
|---|---|---|
| ¹ Operator name and Address EOG Resources, Inc. 104 South Fourth Street Artesia, NM 88210 | | ² OGRID Number 7377 |
| | | ³ Reason for Filing Code/ Effective Date NW |
| ⁴ API Number 30 – 015 - 45662 | ⁵ Pool Name Loco Hills; Glorieta-Yeso | ⁶ Pool Code 96718 |
| ⁷ Property Code 324919 | ⁸ Property Name Kirk Federal Com | ⁹ Well Number 3H |

II. ¹⁰ Surface Location

| | | | | | | | | | |
|--------------------|---------------|-----------------|--------------|---------|-----------------------|---------------------------|----------------------|------------------------|----------------|
| UL or lot no. D | Section 12 | Township 17S | Range 30E | Lot Idn | Feet from the 1276 | North/South Line North | Feet from the 678 | East/West line West | County Eddy |
|--------------------|---------------|-----------------|--------------|---------|-----------------------|---------------------------|----------------------|------------------------|----------------|

¹¹ Bottom Hole Location

| | | | | | | | | | |
|--------------------|---------------|-----------------|--------------|---------|----------------------|---------------------------|----------------------|------------------------|----------------|
| UL or lot no. A | Section 12 | Township 17S | Range 30E | Lot Idn | Feet from the 507 | North/South line North | Feet from the 110 | East/West line East | County Eddy |
|--------------------|---------------|-----------------|--------------|---------|----------------------|---------------------------|----------------------|------------------------|----------------|

| | | | | | |
|-----------------------------|---|---|-----------------------------------|------------------------------------|-------------------------------------|
| ¹² Lse Code F | ¹³ Producing Method Code P | ¹⁴ Gas Connection Date 5/31/19 | ¹⁵ C-129 Permit Number | ¹⁶ C-129 Effective Date | ¹⁷ C-129 Expiration Date |
|-----------------------------|---|---|-----------------------------------|------------------------------------|-------------------------------------|

III. Oil and Gas Transporters

| | | |
|------------------------------------|---|---------------------|
| ¹⁸ Transporter OGRID | ¹⁹ Transporter Name and Address | ²⁰ O/G/W |
| 36785 | DCP Operating Company, LP 5718 Westheimer Road, Suite 1900 Houston, TX 77057 | G |
| 015694 | Holly Frontier & Marketing Company 10 Desta Drive, Suite 350W Midland, TX 79702 | O |
| | | |
| | | |
| | | |
| | | |
| | | |

RECEIVED
JUL 24 2019
DISTRICT II-ARTESIA O.C.D.

IV. Well Completion Data

| | | | | | |
|---|-------------------------------------|---------------------------|---------------------------------|---|-----------------------|
| ²¹ Spud Date RH 2/14/19 RT 2/20/19 | ²² Ready Date 5/29/19 | ²³ TD 9118' | ²⁴ PBT 9080' | ²⁵ Perforations 5372'-9076' | ²⁶ DHC, MC |
| ²⁷ Hole Size | ²⁸ Casing & Tubing Size | ²⁹ Depth Set | ³⁰ Sacks Cement | | |
| 30" ✓ | 20" Conductor ✓ | 118' ✓ | Redi-mix with 14 yds to surface | | |
| 17-1/2" ✓ | 13-3/8" 55 48.0 | 428' | C 630 sx (circ) | | |
| 12-1/4" | 9-5/8" 55 40.0 | 3389' | C 1380 sx (circ) | | |
| 8-3/4" | 7" x 5-1/2" 180 29.0 | 9102' | C 1010 sx | | |
| | 3-1/2" 55 9.3 | 4294' | | | |

V. Well Test Data

| | | | | | |
|---------------------------------------|--|-------------------------|---------------------------|-----------------------------|-----------------------------|
| ³¹ Date New Oil 5/30/19 | ³² Gas Delivery Date 5/31/19 | ³³ Test Date | ³⁴ Test Length | ³⁵ Tbg. Pressure | ³⁶ Csg. Pressure |
| ³⁷ Choke Size | ³⁸ Oil | ³⁹ Water | ⁴⁰ Gas | | ⁴¹ Test Method |

| | | | |
|--|------------------------|---|--|
| ⁴² I hereby certify that the rules of the Oil Conservation Division have been complied with and that the information given above is true and complete to the best of my knowledge and belief. Signature: Tina Huerta | | OIL CONSERVATION DIVISION Approved by: Raymond M. Pulley Title: Geologist Approval Date: 8-15-19 | |
| Printed name: Tina Huerta | | | |
| Title: Regulatory Specialist | | | |
| E-mail Address: tina_huerta@eogresources.com | | | |
| Date: July 23, 2019 | Phone: 575-748-1471 | | |

District I
1625 N. French Dr., Hobbs, NM 88240
Phone: (575) 393-6161 Fax: (575) 393-0720
District II
811 S. First St., Artesia, NM 88210
Phone: (575) 748-1283 Fax: (575) 748-9720
District III
1000 Rio Brazos Road, Aztec, NM 87410
Phone: (505) 334-6178 Fax: (505) 334-6170
District IV
1220 S. St. Francis Dr., Santa Fe, NM 87505
Phone: (505) 476-3460 Fax: (505) 476-3462

State of New Mexico
Energy, Minerals & Natural Resources Department
OIL CONSERVATION DIVISION
1220 South St. Francis Dr.
Santa Fe, NM 87505

Form C-102
Revised August 1, 2011
Submit one copy to appropriate
District Office

JUN 07 2019

☐ AMENDED REPORT

DISTRICT II-ARTESIA O.C.D.

WELL LOCATION AND ACREAGE DEDICATION PLAT

| | | | |
|---|---|---------------------------------|---|
| ¹ API Number 30-015-45662 | | ² Pool Code 96718 | ³ Pool Name Loco Hills; Glorieta-Yeso |
| ⁴ Property Code 324919 | ⁵ Property Name Kirk Federal Com | | ⁶ Well Number 3H |
| ⁷ OGRID No. 7377 | ⁸ Operator Name EOG Resources, Inc. | | ⁹ Elevation 3757'GL |

¹⁰ Surface Location

| | | | | | | | | | |
|--------------------|---------------|-----------------|--------------|---------|-----------------------|---------------------------|----------------------|------------------------|----------------|
| UL or lot no. D | Section 12 | Township 17S | Range 30E | Lot Idn | Feet from the 1276 | North/South line North | Feet from the 678 | East/West line West | County Eddy |
|--------------------|---------------|-----------------|--------------|---------|-----------------------|---------------------------|----------------------|------------------------|----------------|

¹¹ Bottom Hole Location If Different From Surface

| | | | | | | | | | |
|--------------------|---------------|-----------------|--------------|---------|-----------------------|---------------------------|----------------------|------------------------|----------------|
| UL or lot no. A | Section 12 | Township 17S | Range 30E | Lot Idn | Feet from the .507 | North/South line North | Feet from the 110 | East/West line East | County Eddy |
|--------------------|---------------|-----------------|--------------|---------|-----------------------|---------------------------|----------------------|------------------------|----------------|

| | | | |
|--------------------------------------|-------------------------------|----------------------------------|-------------------------|
| ¹² Dedicated Acres 240 | ¹³ Joint or Infill | ¹⁴ Consolidation Code | ¹⁵ Order No. |
|--------------------------------------|-------------------------------|----------------------------------|-------------------------|

No allowable will be assigned to this completion until all interests have been consolidated or a non-standard unit has been approved by the division.

| | | | |
|-------------------|---|--|--|
| ¹⁶ | ¹⁷ OPERATOR CERTIFICATION I hereby certify that the information contained herein is true and complete to the best of my knowledge and belief, and that this organization either owns a working interest or unleased mineral interest in the land including the proposed bottom hole location or has a right to drill this well at this location pursuant to a contract with an owner of such a mineral or working interest, or to a voluntary pooling agreement or a compulsory pooling order heretofore entered by the division. Signature Date June 7, 2019 Tina Huerta Printed Name tina.huerta@egoresources.com E-mail Address | | |
| | ¹⁸ SURVEYOR CERTIFICATION I hereby certify that the well location shown on this plat was plotted from field notes of actual surveys made by me or under my supervision, and that the same is true and correct to the best of my belief. Date of Survey Signature and Seal of Professional Surveyor: | | |
| | Certificate Number | | |
| | | | |

District I
1625 N. French Dr., Hobbs, NM 88240
Phone: (575) 393-6161 Fax: (575) 393-0720
District II
811 S. First St., Artesia, NM 88210
Phone: (575) 748-1283 Fax: (575) 748-9720
District III
1000 Rio Brazos Road, Aztec, NM 87410
Phone: (505) 334-6178 Fax: (505) 334-6170
District IV
1220 S. St. Francis Dr., Santa Fe, NM 87505
Phone: (505) 476-3460 Fax: (505) 476-3462

State of New Mexico
Energy, Minerals & Natural Resources
Department
OIL CONSERVATION DIVISION
1220 South St. Francis Dr.
Santa Fe, NM 87505
DISTRICT II-ARTESIA O.C.D.

FORM C-102
Revised August 1, 2011
Submit one copy to appropriate
District Office

☐ AMENDED REPORT

WELL LOCATION AND ACREAGE DEDICATION PLAT

| | | |
|--|--|--|
| ¹ API Number 30-015-45662 | ² Pool Code 96718 | ³ Pool Name Loco Hills; Glorieta-Yeso |
| ⁴ Property Code 324919 | ⁵ Property Name KIRK FEDERAL COM | ⁶ Well Number 3H |
| ⁷ GRID No. 7377 | ⁸ Operator Name EOG RESOURCES, INC. | ⁹ Elevation 3757' |

¹⁰Surface Location

| UL or lot no. | Section | Township | Range | Lot Idn | Feet from the | North/South line | Feet from the | East/West line | County |
|---------------|-----------|-------------|-------------|----------|---------------|------------------|---------------|----------------|-------------|
| D | 12 | 17-S | 30-E | - | 1276 | NORTH | 678 | WEST | EDDY |

¹¹Bottom Hole Location If Different From Surface

| UL or lot no. | Section | Township | Range | Lot Idn | Feet from the | North/South line | Feet from the | East/West line | County |
|---------------|-----------|-------------|-------------|----------|---------------|------------------|---------------|----------------|-------------|
| A | 12 | 17-S | 30-E | - | 502 | NORTH | 100 | EAST | EDDY |

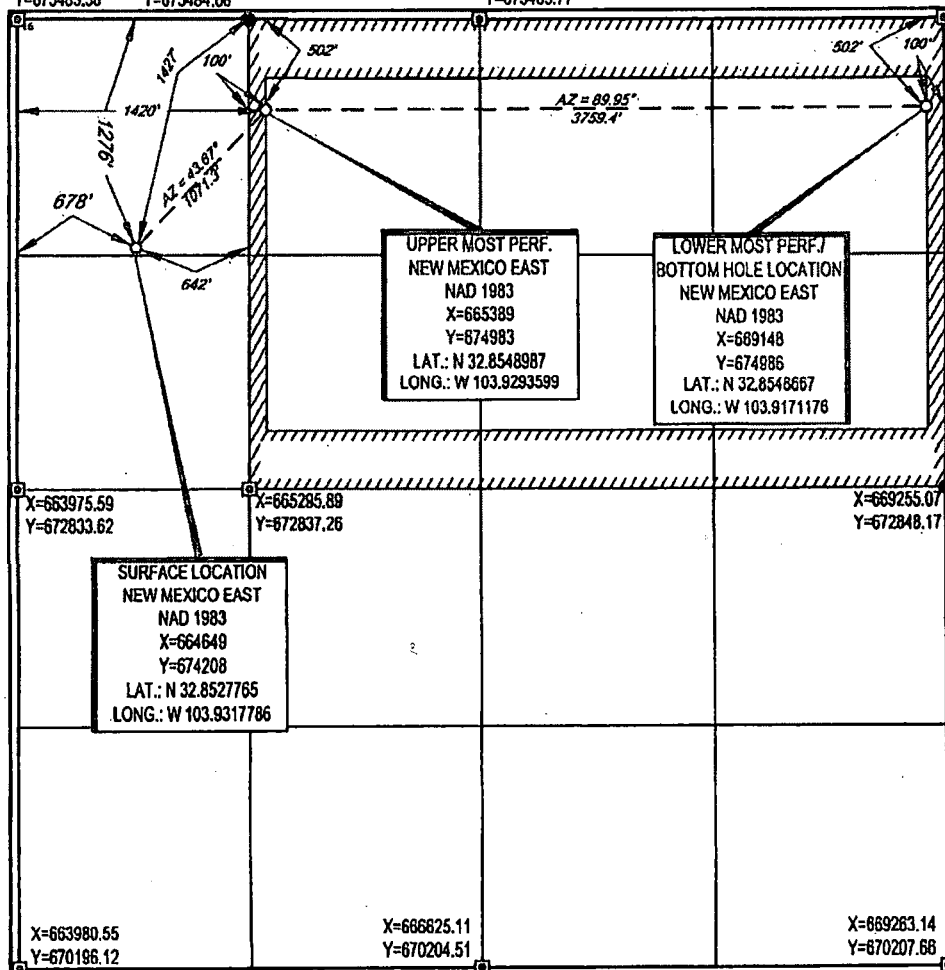
| | | | |
|---|-------------------------------|----------------------------------|-------------------------|
| ¹² Dedicated Acres 240 | ¹³ Joint or Infill | ¹⁴ Consolidation Code | ¹⁵ Order No. |
|---|-------------------------------|----------------------------------|-------------------------|

No allowable will be assigned to this completion until all interests have been consolidated or a non-standard unit has been approved by the division.

X=663967.58 Y=675483.58
X=665287.42 Y=675484.68

X=666607.25 Y=675485.77

X=669246.89 Y=675487.75



17 OPERATOR CERTIFICATION
I hereby certify that the information contained herein is true and complete to the best of my knowledge and belief, and that this organization either owns a working interest or undivided mineral interest in the land including the proposed bottom hole location or has a right to drill this well at this location pursuant to a contract with an owner of such a mineral or working interest, or to a voluntary pooling agreement or a compulsory pooling order heretofore entered by the division.

Tina Huerta 10/23/2018
Signature Date
Tina Huerta
Printed Name
tina.huerta@eogresources.com
E-mail Address

18 SURVEYOR CERTIFICATION
I hereby certify that the well location shown on this plat was plotted from field notes of actual surveys made by me or under my supervision, and that the same is true to the best of my belief.

08/30/2018
Date of Survey
Michael B. Brown
Signature and Seal of Professional Surveyor
MICHAEL B. BROWN
NEW MEXICO
18329
PROFESSIONAL SURVEYOR
Certificate Number

RAP 1-20-19