

District I  
1625 N. French Dr., Hobbs, NM 88240  
Phone: (575) 393-6161 Fax: (575) 393-0720  
District II  
811 S. First St., Artesia, NM 88210  
Phone: (575) 748-1283 Fax: (575) 748-9720  
District III  
1000 Rio Brazos Road, Aztec, NM 87410  
Phone: (505) 334-6178 Fax: (505) 334-6170  
District IV  
1220 S. St. Francis Dr., Santa Fe, NM 87505  
Phone: (505) 476-3460 Fax: (505) 476-3462

State of New Mexico  
Energy, Minerals & Natural Resources  
Department  
OIL CONSERVATION DIVISION  
1220 South St. Francis Dr.  
Santa Fe, NM 87505

NM OIL CONSERVATION  
ARTESIA DISTRICT

SEP 27 2019

Submit one copy to appropriate

District Office

RECEIVED

☒ AMENDED REPORT  
AS DRILLED

WELL LOCATION AND ACREAGE DEDICATION PLAT

<sup>1</sup> API Number 30-015-45557	<sup>2</sup> Pool Code 98220	<sup>3</sup> Pool Name PURPLE SAGE;WOLFCAMP(GAS)
<sup>4</sup> Property Code 321453	<sup>5</sup> Property Name GENERAL KEHOE 02-24S-28E RB	<sup>6</sup> Well Number #217H
<sup>7</sup> GRID No. 228937	<sup>8</sup> Operator Name MATADOR PRODUCTION COMPANY	<sup>9</sup> Elevation 2998'

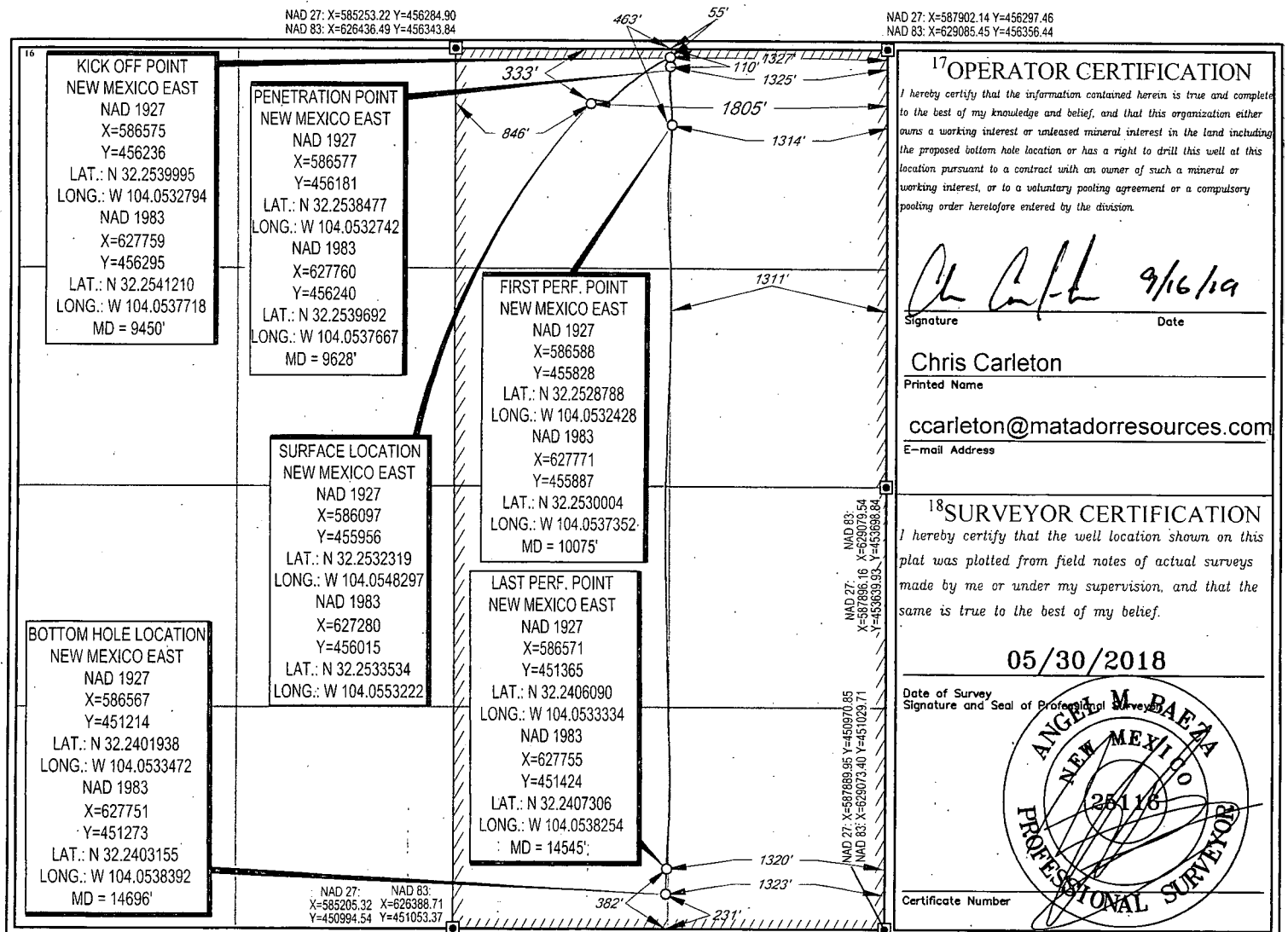
<sup>10</sup>Surface Location

UL or lot no.	Section	Township	Range	Lot Idn	Feet from the	North/South line	Feet from the	East/West line	County
2	2	24-S	28-E	-	333'	NORTH	1805'	EAST	EDDY

UL or lot no.	Section	Township	Range	Lot Idn	Feet from the	North/South line	Feet from the	East/West line	County
0	2	24-S	28-E	-	231'	SOUTH	1323'	EAST	EDDY

<sup>12</sup> Dedicated Acres 319.64	<sup>13</sup> Joint or Infill	<sup>14</sup> Consolidation Code	<sup>15</sup> Order No.
---	-------------------------------	----------------------------------	-------------------------

No allowable will be assigned to this completion until all interests have been consolidated or a non-standard unit has been approved by the division.



SCALE: 1" = 1000'

0' 500' 1000'

SECTION 2, TOWNSHIP 24-S, RANGE 28-E, N.M.P.M.  
EDDY COUNTY, NEW MEXICO

FND. BRASS CAP,  
U.S. G.L.O. SUR.  
1942

35  
2

463'

55'

N 89°43'39" E 2648.99'

36

35 36  
2 1

FND. BRASS CAP,  
U.S. G.L.O. SUR.  
1942

N 00°55'24" E 2630.81'

N 00°53'12" E 2620.30'

S 00°07'39" W 2657.60'

S 00°07'55" W 2669.13'

KICK OFF POINT  
NEW MEXICO EAST  
NAD 1927  
X=586575  
Y=456236  
LAT.: N 32.2539995  
LONG.: W 104.0532794  
NAD 1983  
X=627759  
Y=456295  
LAT.: N 32.2541210  
LONG.: W 104.0537718  
MD = 9450'

PENETRATION POINT  
NEW MEXICO EAST  
NAD 1927  
X=586577  
Y=456181  
LAT.: N 32.2538477  
LONG.: W 104.0532742  
NAD 1983  
X=627760  
Y=456240  
LAT.: N 32.2539692  
LONG.: W 104.0537667  
MD = 9628'

FIRST PERF. POINT  
NEW MEXICO EAST  
NAD 1927  
X=586588  
Y=455828  
LAT.: N 32.2528788  
LONG.: W 104.0532428  
NAD 1983  
X=627771  
Y=455887  
LAT.: N 32.2530004  
LONG.: W 104.0537352  
MD = 10075'

SURFACE LOCATION  
NEW MEXICO EAST  
NAD 1927  
X=586097  
Y=455956  
LAT.: N 32.2532319  
LONG.: W 104.0548297  
NAD 1983  
X=627280  
Y=456015  
LAT.: N 32.2533534  
LONG.: W 104.0553222

LAST PERF. POINT  
NEW MEXICO EAST  
NAD 1927  
X=586571  
Y=451365  
LAT.: N 32.2406090  
LONG.: W 104.0533334  
NAD 1983  
X=627755  
Y=451424  
LAT.: N 32.2407306  
LONG.: W 104.0538254  
MD = 14545'

BOTTOM HOLE LOCATION  
NEW MEXICO EAST  
NAD 1927  
X=586567  
Y=451214  
LAT.: N 32.2401938  
LONG.: W 104.0533472  
NAD 1983  
X=627751  
Y=451273  
LAT.: N 32.2403155  
LONG.: W 104.0538392  
MD = 14696'

N 89°24'00" W 2684.04'

N 89°29'43" W 2684.78'

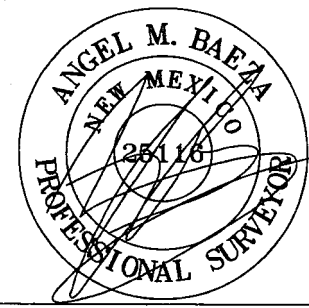
FND. BRASS CAP,  
U.S. G.L.O. SUR.  
1942

FND. BRASS CAP,  
U.S. G.L.O. SUR.  
1942

LEASE NAME & WELL NO.: GENERAL KEHOE 02-24S-28E RB #217H  
SECTION 2 TWP 24-S RGE 28-E SURVEY N.M.P.M.  
COUNTY EDDY STATE NM ELEVATION 2998'  
DESCRIPTION 333' FNL & 1805' FEL



**TOPOGRAPHIC**  
LOYALTY INNOVATION LEGACY  
1400 EVERMAN PARKWAY, Ste. 146 • FT. WORTH, TEXAS 76140  
TELEPHONE: (817) 744-7512 • FAX (817) 744-7554  
2903 NORTH BIG SPRING • MIDLAND, TEXAS 79705  
TELEPHONE: (432) 682-1653 OR (800) 767-1653 • FAX (432) 682-1743  
WWW.TOPOGRAPHIC.COM



Angel M. Baeza, P.S. No. 25116  
SEPTEMBER 12, 2019

<p>GENERAL KEHOE 02-24S-28E RB #217H AS-COMPLETED</p> <p>DATE: 09/12/2019</p> <p>FILE: AD_GENERAL_KEHOE_02-24S-28E_RB_217H</p> <p>DRAWN BY: AMD</p> <p>SHEET: 1 OF 1</p>	REVISION:		<p>NOTES:</p> <ol style="list-style-type: none"> <li>1. ORIGINAL DOCUMENT SIZE: 8.5" X 11"</li> <li>2. ALL BEARINGS, DISTANCES, AND COORDINATE VALUES CONTAINED HEREIN ARE GRID BASED UPON THE NEW MEXICO COORDINATE SYSTEM OF 1983, EAST ZONE, U.S. SURVEY FEET.</li> <li>3. THIS WELL LOCATION SHOWN HEREON HAS BEEN SURVEYED ON THE GROUND UNDER MY SUPERVISION AND PREPARED ACCORDING TO THE EVIDENCE FOUND AT THE TIME OF SURVEY, AND DATA PROVIDED BY MATADOR PRODUCTION COMPANY. THIS CERTIFICATION IS MADE AND LIMITED TO THOSE PERSONS OR ENTITIES SHOWN ON THE FACE OF THIS PLAT AND IS NON-TRANSFERABLE. THIS SURVEY IS CERTIFIED FOR THIS TRANSACTION ONLY.</li> </ol>
	INT	DATE	