

UNITED STATES  
DEPARTMENT OF THE INTERIOR  
BUREAU OF LAND MANAGEMENTNM OIL CONSERVATION  
ARTESIA DISTRICT  
OCD **Artesia** 17 2019FORM APPROVED  
OMB No. 1004-0137  
Expires: July 31, 2010

## WELL COMPLETION OR RECOMPLETION REPORT AND LOG

5. Lease Serial No.  
NMNM237651a. Type of Well ☐ Oil Well ☒ Gas Well ☐ Dry ☐ Other  
b. Type of Completion ☒ New Well ☐ Work Over ☐ Deepen ☐ Plug Back ☐ Diff. Resvr.  
Other \_\_\_\_\_

6. If Indian, Allottee or Tribe Name

7. Unit or CA Agreement Name and No.

2. Name of Operator  
MEWBOURNE OIL COMPANY Contact: JACKIE LATHAN  
E-Mail: jlathan@mewbourne.com8. Lease Name and Well No.  
BUFFALO TRACE 1/36W1PA FED COM 1H3. Address P O BOX 5270  
HOBBS, NM 882413a. Phone No. (include area code)  
Ph: 575-393-59059. API Well No.  
30-015-43914-00-S1

4. Location of Well (Report location clearly and in accordance with Federal requirements)\*

At surface Sec 12 T26S R29E Mer NMP  
NENE 575FNL 750FELAt top prod interval reported below Sec 1 T26S R29E Mer NMP  
SESE 388FSL 1000FELAt total depth Sec 36 T25S R29E Mer NMP  
NENE 330FNL 961FEL10. Field and Pool, or Exploratory  
PURPLE SAGE-WOLFCAMP (GAS)11. Sec., T., R., M., or Block and Survey  
or Area Sec 12 T26S R29E Mer NMP12. County or Parish  
EDDY 13. State  
NM14. Date Spudded  
02/02/201915. Date T.D. Reached  
03/25/201916. Date Completed  
☐ D & A ☒ Ready to Prod.  
05/18/201917. Elevations (DF, KB, RT, GL)\*  
3039 GL18. Total Depth: MD 20830  
TVD 1046819. Plug Back T.D.: MD 20800  
TVD 1046820. Depth Bridge Plug Set: MD  
TVD21. Type Electric & Other Mechanical Logs Run (Submit copy of each)  
EXEMPTFROMLOGGI22. Was well cored? ☒ No ☐ Yes (Submit analysis)  
Was DST run? ☒ No ☐ Yes (Submit analysis)  
Directional Survey? ☐ No ☒ Yes (Submit analysis)

## 23. Casing and Liner Record (Report all strings set in well)

Hole Size	Size/Grade	Wt. (#/ft.)	Top (MD)	Bottom (MD)	Stage Cementer Depth	No. of Sks. & Type of Cement	Slurry Vol. (BBL)	Cement Top*	Amount Pulled
17.500	13.375 J55	54.5	0	927		C 800	218	0	
12.250	9.625 HCL80	40.0	0	3320		C 950	275	0	
8.750	7.000 HCP110	29.0	0	10600		C 700	360	3020	
6.125	9.625 HCP110	13.5	9852	20790		H 600	266	0	
	4.50								

## 24. Tubing Record

Size	Depth Set (MD)	Packer Depth (MD)	Size	Depth Set (MD)	Packer Depth (MD)	Size	Depth Set (MD)	Packer Depth (MD)

## 25. Producing Intervals

## 26. Perforation Record

Formation	Top	Bottom	Perforated Interval	Size	No. Holes	Perf. Status
A) WOLFCAMP	10316	20830	10897 TO 20790	0.390	2160	OPEN
B)						
C)						
D)						

## 27. Acid, Fracture, Treatment, Cement Squeeze, Etc.

Depth Interval	Amount and Type of Material
10897 TO 20790	25,783,947 GALS SLICKWATER CARRYING 11,984,500# LOCAL 100 MESH SAND & 12,171,561# LOCAL 40/70 SAND

## 28. Production - Interval A

Date First Produced	Test Date	Hours Tested	Test Production	Oil BBL	Gas MCF	Water BBL	Oil Gravity Corr. API	Gas Gravity	Production Method
05/18/2019	05/21/2019	24	→	139.0	545.0	2289.0	48.3	0.72	FLOWMETERED
Choke Size	Tbg. Press. Flwg.	Csg. Press.	24 Hr. Rate	Oil BBL	Gas MCF	Water BBL	Gas:Oil Ratio	Well Status	
20/64	SI	2550.0	→	139	545	2289		PGW	

## 28a. Production - Interval B

Date First Produced	Test Date	Hours Tested	Test Production	Oil BBL	Gas MCF	Water BBL	Oil Gravity Corr. API	Gas Gravity	Production Method
			→						
Choke Size	Tbg. Press. Flwg.	Csg. Press.	24 Hr. Rate	Oil BBL	Gas MCF	Water BBL	Gas:Oil Ratio	Well Status	
	SI		→						

(See Instructions and spaces for additional data on reverse side)

ELECTRONIC SUBMISSION #466318 VERIFIED BY THE BLM WELL INFORMATION SYSTEM

\*\* BLM REVISED \*\* BLM REVISED \*\* BLM REVISED \*\* BLM REVISED \*\* BLM REVISED \*\*

Reclamation Due: 11/18/19

ACCEPTED FOR RECORD  
OCT - 6 2019  
BUREAU OF LAND MANAGEMENT  
CARLSBAD FIELD OFFICE

## 28b. Production - Interval C

Date First Produced	Test Date	Hours Tested	Test Production	Oil BBL	Gas MCF	Water BBL	Oil Gravity Corr. API	Gas Gravity	Production Method
			→						
Choke Size	Tbg. Press. Flwg. SI	Csg. Press.	24 Hr. Rate	Oil BBL	Gas MCF	Water BBL	Gas:Oil Ratio	Well Status	
			→						

## 28c. Production - Interval D

Date First Produced	Test Date	Hours Tested	Test Production	Oil BBL	Gas MCF	Water BBL	Oil Gravity Corr. API	Gas Gravity	Production Method
			→						
Choke Size	Tbg. Press. Flwg. SI	Csg. Press.	24 Hr. Rate	Oil BBL	Gas MCF	Water BBL	Gas:Oil Ratio	Well Status	
			→						

29. Disposition of Gas(Sold, used for fuel, vented, etc.)  
SOLD

## 30. Summary of Porous Zones (Include Aquifers):

Show all important zones of porosity and contents thereof: Cored intervals and all drill-stem tests, including depth interval tested, cushion used, time tool open, flowing and shut-in pressures and recoveries.

## 31. Formation (Log) Markers

Formation	Top	Bottom	Descriptions, Contents, etc.	Name	Top Meas. Depth
WOLFCAMP	10316	20790	OIL & GAS	RUSTLER TOP SALT RAMSEY DELAWARE MANZANITA BRUSHY CANYON BONE SPRING WOLFCAMP	720 905 3082 3276 4372 5322 7094 10316

32. Additional remarks (include plugging procedure):  
Exempt from logging.

## 33. Circle enclosed attachments:

- |   |                    |               |                       |
|---|--------------------|---------------|-----------------------|
| 1. Electrical/Mechanical Logs (1 full set req'd.)     | 2. Geologic Report | 3. DST Report | 4. Directional Survey |
| 5. Sundry Notice for plugging and cement verification | 6. Core Analysis   | 7 Other:      |                       |

## 34. I hereby certify that the foregoing and attached information is complete and correct as determined from all available records (see attached instructions):

Electronic Submission #466318 Verified by the BLM Well Information System.  
For MEWBOURNE OIL COMPANY, sent to the Carlsbad  
Committed to AFMSS for processing by DINAH NEGRETE on 09/25/2019 (19DCN0254SE)

Name (please print) JACKIE LATHAN

Title AUTHORIZED REPRESENTATIVE

Signature (Electronic Submission)

Date 05/22/2019

Title 18 U.S.C. Section 1001 and Title 43 U.S.C. Section 1212, make it a crime for any person knowingly and willfully to make to any department or agency of the United States any false, fictitious or fraudulent statements or representations as to any matter within its jurisdiction.

\*\* REVISED \*\* REVISED \*\* REVISED \*\* REVISED \*\* REVISED \*\* REVISED \*\* REVISED \*\* REVISED \*\*

District I  
1625 N. French Dr., Hobbs, NM 88240  
Phone: (575) 393-6161 Fax: (575) 393-0720  
District II  
811 S. First St., Artesia, NM 88210  
Phone: (575) 748-1283 Fax: (575) 748-9720  
District III  
1000 Rio Brazos Road, Aztec, NM 87410  
Phone: (505) 334-6178 Fax: (505) 334-6170  
District IV  
1220 S. St. Francis Dr., Santa Fe, NM 87505  
Phone: (505) 476-3460 Fax: (505) 476-3462

State of New Mexico  
Energy, Minerals & Natural Resources Department  
OIL CONSERVATION DIVISION  
1220 South St. Francis Dr.  
Santa Fe, NM 87505

Form C-102  
Revised August 1, 2011  
Submit one copy to appropriate  
District Office

☐ AMENDED REPORT

WELL LOCATION AND ACREAGE DEDICATION PLAT

<sup>1</sup> API Number <b>30-015-43914</b>	<sup>2</sup> Pool Code <b>98220</b>	<sup>3</sup> Pool Name <b>Purple Sage; Wolfcamp (Gas)</b>
<sup>4</sup> Property Code <b>322234</b>	<sup>5</sup> Property Name <b>BUFFALO TRACE 1/36 W1PA FEDERAL COM</b>	<sup>6</sup> Well Number <b>1H</b>
<sup>7</sup> GRID NO. <b>14744</b>	<sup>8</sup> Operator Name <b>MEWBOURNE OIL COMPANY</b>	<sup>9</sup> Elevation <b>3039'</b>

<sup>10</sup> Surface Location

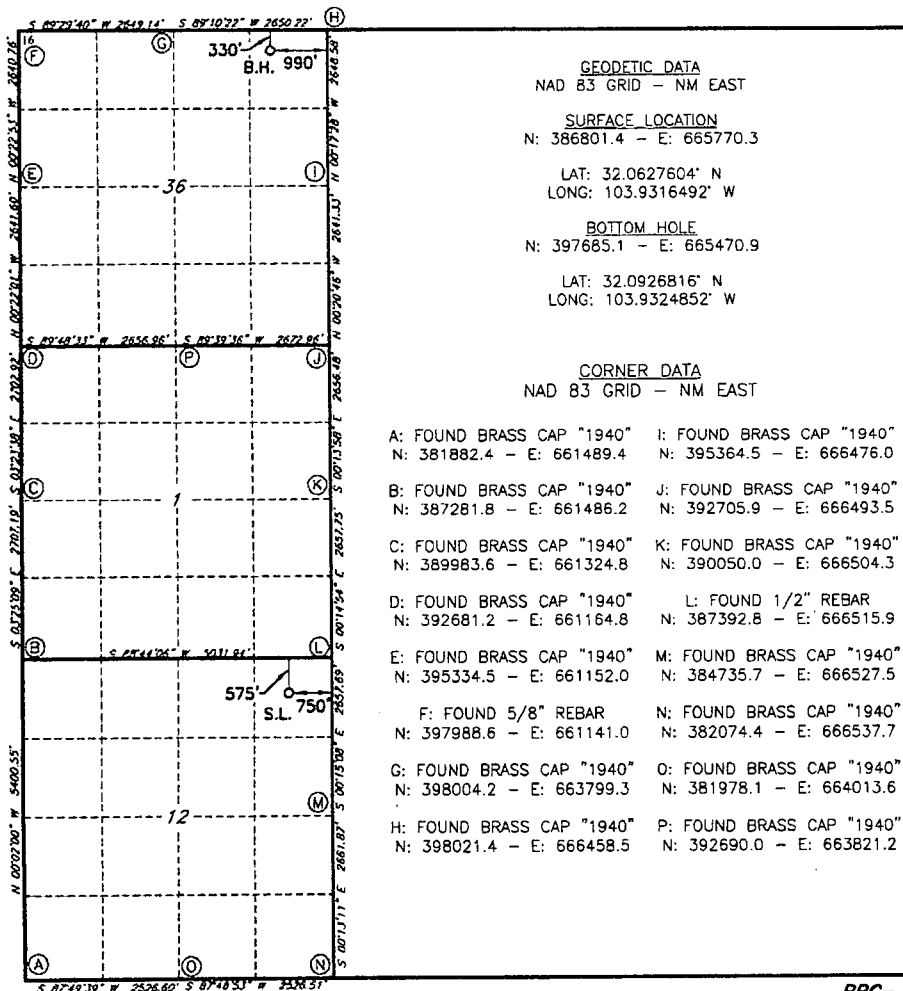
UL or lot no.	Section	Township	Range	Lot Idn	Feet from the	North/South line	Feet From the	East/West line	County
<b>A</b>	<b>12</b>	<b>26S</b>	<b>29E</b>		<b>575</b>	<b>NORTH</b>	<b>750</b>	<b>EAST</b>	<b>EDDY</b>

<sup>11</sup> Bottom Hole Location If Different From Surface

UL or lot no.	Section	Township	Range	Lot Idn	Feet from the	North/South line	Feet from the	East/West line	County
<b>A</b>	<b>36</b>	<b>25S</b>	<b>29E</b>		<b>330</b>	<b>NORTH</b>	<b>961</b>	<b>EAST</b>	<b>EDDY</b>

<sup>12</sup> Dedicated Acres <b>320</b>	<sup>13</sup> Joint or Infill	<sup>14</sup> Consolidation Code	<sup>15</sup> Order No.
---	-------------------------------	----------------------------------	-------------------------

No allowable will be assigned to this completion until all interest have been consolidated or a non-standard unit has been approved by the division.



<sup>17</sup> OPERATOR CERTIFICATION

I hereby certify that the information contained herein is true and complete to the best of my knowledge and belief, and that this organization either owns a working interest or unleased mineral interest in the land including the proposed bottom hole location or has a right to drill this well at this location pursuant to a contract with an owner of such a mineral or working interest, or to a voluntary pooling agreement or a compulsory pooling order heretofore entered by the division

Signature: Jackie Lathan Date: 5/21/19  
Printed Name: Jackie Lathan

E-mail Address

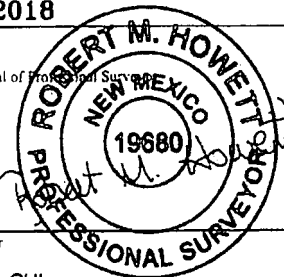
<sup>18</sup> SURVEYOR CERTIFICATION

I hereby certify that the well location shown on this plat was plotted from field notes of actual surveys made by me or under my supervision, and that the same is true and correct to the best of my belief.

**4-20-2018**

Date of Survey

Signature and Seal of Professional Surveyor



**19680**

Certificate Number

12-13-18 SHL

RR- Job No.: LS1804504R2