

State of New Mexico  
Energy, Minerals and Natural Resources Department

Michelle Lujan Grisham  
Governor

Sarah Cottrell Propst  
Cabinet Secretary

Todd E. Leahy, JD, PhD  
Deputy Secretary

Adrienne Sandoval, Division Director  
Oil Conservation Division



## Notice of C-104 Denial and Request for Information

OCD denies your C-104 – *Request for Allowable and Authorization to Transport* because it is incomplete or conflicts with other information provided to OCD.

The sale or transport of product without a C-104 approved by OCD violates the Oil and Gas Act and the implementing rules, including 19.15.7.15 and 19.15.16.19 NMAC.

To avoid an enforcement action, you must submit the indicated information no later than 30 days after receipt of this notice.

### Test Allowable, New Well and Recompleted Well Amend C-104

- ☒ C-103 (or BLM equivalent) for all casing strings
  - ☐ Spud Notice
  - ☐ Surface Casing
  - ☐ Intermediate Casing (if applicable)
  - ☐ Additional Intermediate Casing (if applicable)
  - ☐ Production Casing or Liner
  - ☒ Tbg. exception
- ☐ Applicable Order (NSL, NSP, Other \_\_\_\_\_)
- ☐ Deviation Survey for Vertical Wells
- ☒ Directional Survey Certified
  - ☒ C-102 (As-Drilled Plat for Horizontal Well)

### New Well and Recompleted Well Only

- ☒ C-103 Completion Sundry (or BLM equivalent) File approved Sundry.
- ☒ C-105 Completion Report (or BLM equivalent) Does not match C-104
- ☐ All Logs Run on Well

If you have any questions please contact the local OCD District Office

District I  
1625 N. French Dr., Hobbs, NM 88240  
District II  
811 S. First St., Artesia, NM 88210  
District III  
1000 Rio Brazos Rd., Aztec, NM 87410  
District IV  
1220 S. St. Francis Dr., Santa Fe, NM 87505

State of New Mexico  
Energy, Minerals & Natural Resources

Oil Conservation Division  
1220 South St. Francis Dr.  
Santa Fe, NM 87505

Form C-104  
Revised August 1, 2011

NM OIL CONSERVATION  
ARTESIA DISTRICT  
SEP 19 2019  
Submit one copy to appropriate District Office

RECEIVED

☐ AMENDED REPORT

I. REQUEST FOR ALLOWABLE AND AUTHORIZATION TO TRANSPORT

<sup>1</sup> Operator name and Address Mewbourne Oil Company PO Box 5270 Hobbs, NM 88240		<sup>2</sup> OGRID Number 14744
		<sup>3</sup> Reason for Filing Code/ Effective Date New Well / 08/24/19
<sup>4</sup> API Number 30 - 015-45794	<sup>5</sup> Pool Name Getty; Bone Spring	<sup>6</sup> Pool Code 27470
<sup>7</sup> Property Code 325169	<sup>8</sup> Property Name Glock 17/16 B3DA Federal Com	<sup>9</sup> Well Number 2H

II. <sup>10</sup> Surface Location

Ul or lot no.	Section	Township	Range	Lot Idn	Feet from the	North/South Line	Feet from the	East/West line	County
A	18	20S	29E		800	North	600	East	Eddy

<sup>11</sup> Bottom Hole Location

UL or lot no.	Section	Township	Range	Lot Idn	Feet from the	North/South line	Feet from the	East/West line	County
A	16	20S	29E		587	North	107	East	Eddy
<sup>12</sup> Lse Code F	<sup>13</sup> Producing Method Code Flowing	<sup>14</sup> Gas Connection Date 08/24/19	<sup>15</sup> C-129 Permit Number	<sup>16</sup> C-129 Effective Date	<sup>17</sup> C-129 Expiration Date				

III. Oil and Gas Transporters

<sup>18</sup> Transporter OGRID	<sup>19</sup> Transporter Name and Address	<sup>20</sup> O/G/W
35246	Shell Trading US Co PO Box 4604 Houston, TX 77210	O
151618	Enterprise Field Service PO Box 4503 Houston, TX 77210	G

IV. Well Completion Data We are asking for an exemption from tubing at this time.

<sup>21</sup> Spud Date 04/08/19	<sup>22</sup> Ready Date 08/24/19	<sup>23</sup> TD 19705'	<sup>24</sup> PBTD 19355'	<sup>25</sup> Perforations 9340' - 19345'	<sup>26</sup> DHC, MC
<sup>27</sup> Hole Size	<sup>28</sup> Casing & Tubing Size	<sup>29</sup> Depth Set	<sup>30</sup> Sacks Cement		
26" ✓	20" ✓ 94.0 J55	413' ✓	1805		
17 1/2" ✓	13 3/8" ✓ 54.5 J55	962' /	1030		
12 1/4" ✓ 8 3/4" ✓	9 5/8" ✓ 26.0 HCR110 7" ✓ 13.5 HCR110	3072' ✓ 9374' ✓ 9310'	1100 850		
6 1/8" ✓	4 1/2" ✓ 13.5 HCR110	8196' - 19345' ✓	725		

V. Well Test Data

<sup>31</sup> Date New Oil 08/24/19	<sup>32</sup> Gas Delivery Date 08/24/19	<sup>33</sup> Test Date 08/26/19	<sup>34</sup> Test Length 24 hrs	<sup>35</sup> Tbg. Pressure NA	<sup>36</sup> Csg. Pressure 1000
<sup>37</sup> Choke Size 18/64	<sup>38</sup> Oil 706	<sup>39</sup> Water 2011	<sup>40</sup> Gas 1587		<sup>41</sup> Test Method Production

<sup>42</sup> I hereby certify that the rules of the Oil Conservation Division have been complied with and that the information given above is true and complete to the best of my knowledge and belief.

Signature:

Printed name:  
Jackie Lathan

Title:  
Regulatory

E-mail Address:  
jlathan@mewbourne.com

Date:  
09/18/19

Phone:  
575-393-5905

OIL CONSERVATION DIVISION

Approved by:

Title:

Approval I

**DENIED**

See Attached Cover Sheet

\*Htg. sized CLASS

**NM OIL CONSERVATION**  
ARTESIA DISTRICT

District I  
1625 N. French Dr., Hobbs, NM 88240  
Phone: (575) 393-6161 Fax: (575) 393-0720  
District II  
811 S. First St., Artesia, NM 88210  
Phone: (575) 748-1283 Fax: (575) 748-9720  
District III  
1000 Rio Brazos Road, Aztec, NM 87410  
Phone: (505) 334-6178 Fax: (505) 334-6170  
District IV  
1220 S. St. Francis Dr., Santa Fe, NM 87505  
Phone: (505) 476-3460 Fax: (505) 476-3462

State of New Mexico  
Energy, Minerals & Natural Resources Department  
OIL CONSERVATION DIVISION  
1220 South St. Francis Dr.  
Santa Fe, NM 87505

SEP 19 2019

Form C-102

Revised August 1, 2011

Submit one copy to appropriate

District Office

RECEIVED

☐ AMENDED REPORT

**WELL LOCATION AND ACREAGE DEDICATION PLAT**

<sup>1</sup> API Number <b>30-015-45794</b>	<sup>2</sup> Pool Code <b>27470</b>	<sup>3</sup> Pool Name <b>Betty; Bone Spring</b>
<sup>4</sup> Property Code <b>325169</b>	<sup>5</sup> Property Name <b>GLOCK 17/16 B3DA FEDERAL COM</b>	
<sup>7</sup> OGRID NO. <b>14744</b>	<sup>8</sup> Operator Name <b>MEWBOURNE OIL COMPANY</b>	<sup>6</sup> Well Number <b>2H</b>
		<sup>9</sup> Elevation <b>3265'</b>

**<sup>10</sup> Surface Location**

UL or lot no.	Section	Township	Range	Lot Idn	Feet from the	North/South line	Feet From the	East/West line	County
<b>A</b>	<b>18</b>	<b>20S</b>	<b>29E</b>		<b>800</b>	<b>NORTH</b>	<b>600</b>	<b>EAST</b>	<b>EDDY</b>

**<sup>11</sup> Bottom Hole Location If Different From Surface**

UL or lot no.	Section	Township	Range	Lot Idn	Feet from the	North/South line	Feet from the	East/West line	County
<b>A</b>	<b>16</b>	<b>20S</b>	<b>29E</b>		<b>587</b>	<b>NORTH</b>	<b>107</b>	<b>EAST</b>	<b>EDDY</b>

<sup>12</sup> Dedicated Acres <b>320</b>	<sup>13</sup> Joint or Infill	<sup>14</sup> Consolidation Code	<sup>15</sup> Order No.
---	-------------------------------	----------------------------------	-------------------------

No allowable will be assigned to this completion until all interest have been consolidated or a non-standard unit has been approved by the division.

<p><b>16</b></p> <p><u>GEODETIC DATA</u> NAD 83 GRID - NM EAST</p> <p><u>SURFACE LOCATION</u> N: 574288.0 - E: 610827.4</p> <p>LAT: 32.5785698° N LONG: 104.1077358° W</p> <p><u>BOTTOM HOLE</u> N: 574504.2 - E: 621670.9</p> <p>LAT: 32.5790957° N LONG: 104.0725312° W</p> <p><u>CORNER DATA</u> NAD 83 GRID - NM EAST</p> <p>A: FOUND 1" IRON PIPE N: 569795.3 - E: 606355.1</p> <p>B: FOUND BRASS CAP "1942" N: 572439.7 - E: 606381.9</p> <p>C: FOUND BRASS CAP "1916" N: 575081.0 - E: 606409.4</p> <p>D: FOUND BRASS CAP "1916" N: 575085.1 - E: 608784.7</p> <p>E: FOUND BRASS CAP "1916" N: 575088.6 - E: 611425.3</p> <p>F: FOUND BRASS CAP "1916" N: 575086.5 - E: 614071.1</p> <p>G: FOUND BRASS CAP "1916" N: 575085.0 - E: 616714.9</p> <p>H: FOUND BRASS CAP "1916" N: 575095.2 - E: 619357.5</p> <p>I: FOUND BRASS CAP "1916" N: 575105.3 - E: 621999.3</p> <p>J: FOUND BRASS CAP "1916" N: 572462.9 - E: 622006.1</p> <p>K: FOUND BRASS CAP "1916" N: 569820.2 - E: 622012.4</p> <p>L: FOUND BRASS CAP "1916" N: 569809.9 - E: 619369.9</p> <p>M: FOUND BRASS CAP "1916" N: 569798.5 - E: 616727.8</p> <p>N: FOUND BRASS CAP "1916" N: 569801.9 - E: 614082.2</p> <p>O: FOUND BRASS CAP "1916" N: 569804.9 - E: 611437.8</p> <p>P: FOUND BRASS CAP "1916" N: 569800.7 - E: 608796.2</p> <p>Q: FOUND BRASS CAP "1916" N: 572443.7 - E: 616721.6</p>	<p><b>17 OPERATOR CERTIFICATION</b></p> <p>I hereby certify that the information contained herein is true and complete to the best of my knowledge and belief, and that this organization either owns a working interest or unleased mineral interest in the land including the proposed bottom hole location or has a right to drill this well at this location pursuant to a contract with an owner of such a mineral or working interest, or to a voluntary pooling agreement or a compulsory pooling order heretofore entered by the division.</p> <p>Signature: <u>Jackie Lathan</u> Date: <u>9/14/19</u></p> <p>Printed Name: <u>Jackie Lathan</u></p> <p>E-mail Address: _____</p>
	<p><b>18 SURVEYOR CERTIFICATION</b></p> <p>I hereby certify that the well location shown on this plat was plotted from field notes of actual surveys made by me or under my supervision, and that the same is true and correct to the best of my belief.</p> <p>4-3-2018 Date of Survey</p> <p>Signature and Seal of Professional Surveyor: <u>Robert M. Howett</u></p> <p>19680 Certificate Number</p>

RRC-Job No: LS1804427

SEP 19 2019

Intent ☐ As Drilled ☒

RECEIVED

API # 30-015-45794			
Operator Name: Mewbourne Oil Company		Property Name: Glock 17/16 B3DA Fed Com	Well Number 2H

Kick Off Point (KOP)

UL A	Section 18	Township 20S	Range 29E	Lot	Feet 774	From N/S N	Feet 416	From E/W E	County Eddy
Latitude					Longitude				NAD

First Take Point (FTP)

UL D	Section 17	Township 20S	Range 29E	Lot	Feet 626	From N/S N	Feet 109	From E/W W	County Eddy
Latitude					Longitude				NAD

Last Take Point (LTP)

UL A	Section 16	Township 20S	Range 29E	Lot	Feet 587	From N/S N	Feet 107	From E/W E	County Eddy
Latitude					Longitude				NAD

Is this well the defining well for the Horizontal Spacing Unit?

☒

Is this well an infill well?

☐

If infill is yes please provide API if available, Operator Name and well number for Defining well for Horizontal Spacing Unit.

API #			
Operator Name:		Property Name:	Well Number

KZ 06/29/2018

Glock 17-16 B3DA Fed Com #2H  
Eddy County, New Mexico (Nad 83)  
Q190585 & WT-190511  
Design #2

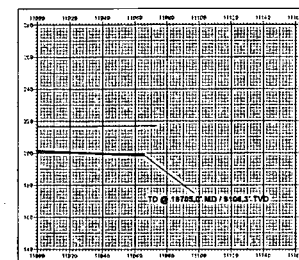
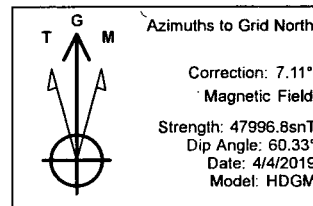
Company Name: Mewbourne Oil Company  
Glock 17-16 B3DA Fed Com #2H  
Eddy County, New Mexico (Nad 83)  
Rig: Patterson #250  
Created By: Shane Robbins  
Date: 6/17/2019

PROJECT DETAILS: Eddy County, New Mexico (Nad 83)

Geodetic System: US State Plane 1983  
Datum: North American Datum 1983  
Ellipsoid: GRS 1980  
Zone: New Mexico Eastern Zone  
System Datum: Mean Sea Level

WELL DETAILS: Glock 17-16 B3DA Fed Com #2H

MD	Inc	Alt	TVD	+N-S	+E-W	VSecDeparture	Annotation
3025.0	0.00	0.00	3025.0	0.0	0.0	0.0	Built 27100'
2155.0	2.80	70.00	2155.0	1.0	2.8	2.8	EOB @ 2.8° Inc / 70° Azm
8593.5	2.60	70.00	8593.5	85.4	234.6	236.2	349.7 Built 127100'
9118.7	89.59	80.50	9044.0	164.9	701.4	704.5	EOB @ 89.59° Inc / 80.5° Azm / Turn 27100'
9774.3	89.59	89.31	9047.4	201.7	1152.0	1158.7	EOB @ 89.31° Azm
18939.0	89.59	89.31	9129.9	216.9	11073.4	11075.6	TD @ 18939' MD / 9130' TVD

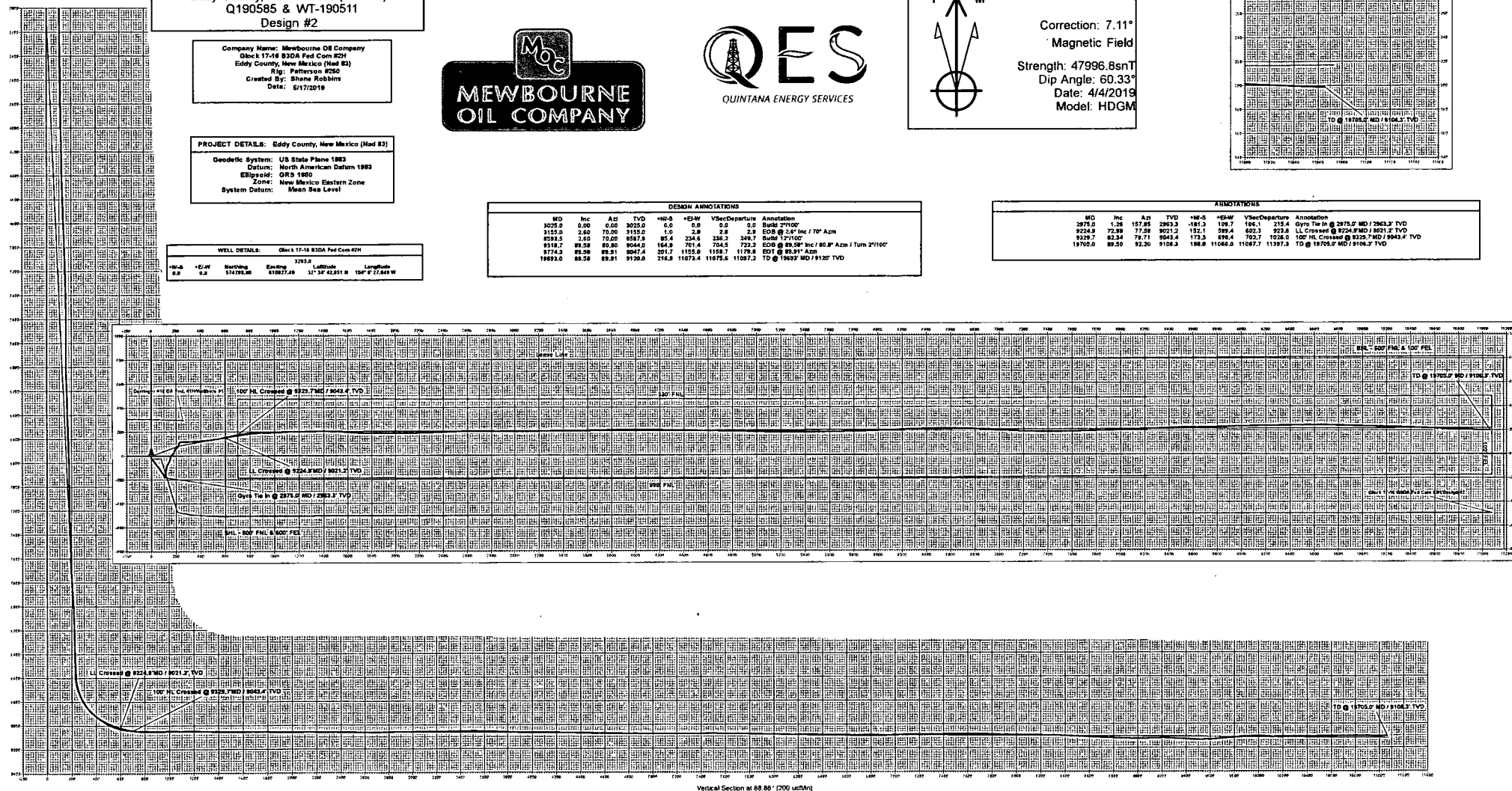


DESIGN ANNOTATIONS

MD	Inc	Alt	TVD	+N-S	+E-W	VSecDeparture	Annotation
3025.0	0.00	0.00	3025.0	0.0	0.0	0.0	Built 27100'
2155.0	2.80	70.00	2155.0	1.0	2.8	2.8	EOB @ 2.8° Inc / 70° Azm
8593.5	2.60	70.00	8593.5	85.4	234.6	236.2	349.7 Built 127100'
9118.7	89.59	80.50	9044.0	164.9	701.4	704.5	EOB @ 89.59° Inc / 80.5° Azm / Turn 27100'
9774.3	89.59	89.31	9047.4	201.7	1152.0	1158.7	EOB @ 89.31° Azm
18939.0	89.59	89.31	9129.9	216.9	11073.4	11075.6	TD @ 18939' MD / 9130' TVD

ANNOTATIONS

MD	Inc	Alt	TVD	+N-S	+E-W	VSecDeparture	Annotation
2975.0	1.26	157.85	2963.3	-181.3	198.7	185.1	215.4 Gyro Tie In @ 2975.0' MD / 2963.3' TVD
9224.0	72.39	77.58	9051.2	152.1	589.4	602.3	9224.0' MD / 9051.2' TVD
9329.7	82.34	78.71	9043.4	173.5	696.4	702.7	1026.0 100' HL Crossed @ 9329.7' MD / 9043.4' TVD
19702.0	89.50	92.20	9108.3	188.8	11068.0	11067.7	TD @ 19702.0' MD / 9108.3' TVD



Vertical Section at 88.86° (200 uetMin)