

State of New Mexico
Energy, Minerals and Natural Resources Department

Michelle Lujan Grisham
Governor

Sarah Cottrell Propst
Cabinet Secretary

Todd E. Leahy, JD, PhD
Deputy Secretary

Adrienne Sandoval, Division Director
Oil Conservation Division



Notice of C-104 Denial and Request for Information

OCD denies your C-104 – *Request for Allowable and Authorization to Transport* because it is incomplete or conflicts with other information provided to OCD.

The sale or transport of product without a C-104 approved by OCD violates the Oil and Gas Act and the implementing rules, including 19.15.7.15 and 19.15.16.19 NMAC.

To avoid an enforcement action, you must submit the indicated information no later than 30 days after receipt of this notice.

Test Allowable, New Well and Recompleted Well

Amend C-104

- ☐ C-103 (or BLM equivalent) for all casing strings
 - ☐ Spud Notice
 - ☐ Surface Casing
 - ☐ Intermediate Casing (if applicable)
 - ☐ Additional Intermediate Casing (if applicable)
 - ☐ Production Casing or Liner
- ☐ Applicable Order (NSL, NSP, Other _____)
- ☐ Deviation Survey for Vertical Wells
- ☒ Directional Survey *Certified (attached)*
 - ☒ C-102 (As-Drilled Plat for Horizontal Well)

New Well and Recompleted Well Only

- ☒ C-103 Completion Sundry (or BLM equivalent) *Approved BLM Copy*
- ☒ C-105 Completion Report (or BLM equivalent) *Need BLM approved copy*
- ☐ All Logs Run on Well

If you have any questions please contact the local OCD District Office

District I
1625 N. French Dr., Hobbs, NM 88240
District II
811 S. First St., Artesia, NM 88210
District III
1000 Rio Brazos Rd., Aztec, NM 87410
District IV
1220 S. St. Francis Dr., Santa Fe, NM 87505

State of New Mexico
Energy, Minerals & Natural Resources

Form C-104
Revised August 1, 2011

Oil Conservation Division
1220 South St. Francis Dr.
Santa Fe, NM 87505

Submit one copy to appropriate District Office

☐ AMENDED REPORT

I. REQUEST FOR ALLOWABLE AND AUTHORIZATION TO TRANSPORT

¹ Operator name and Address Matador Production Company 5400 LBJ Freeway, Suite 1500 Dallas, TX 75240		² OGRID Number 228937
		³ Reason for Filing Code/ Effective Date NEW Well
⁴ API Number 30 - 015-45960	⁵ Pool Name Purple Sage-Wolfcamp (Gas)	⁶ Pool Code 98220
⁷ Property Code 325622	⁸ Property Name Dr. Scrivner Fed Com	⁹ Well Number 227H

II. ¹⁰ Surface Location

Ul or lot no. I	Section 1	Township 24S	Range 28E	Lot Idn -	Feet from the 2169'	North/South South Line	Feet from the 573'	East/West line East	County Eddy
--------------------	--------------	-----------------	--------------	--------------	------------------------	---------------------------	-----------------------	------------------------	----------------

¹¹ Bottom Hole Location

UL or lot no. L	Section 1	Township 24S	Range 28E	Lot Idn -	Feet from the 1704'	North/South line South Line	Feet from the 246'	East/West line West	County Eddy
¹² Lse Code S	¹³ Producing Method Code Flowing	¹⁴ Gas Connection Date 8/20/2019	¹⁵ C-129 Permit Number	¹⁶ C-129 Effective Date	¹⁷ C-129 Expiration Date				

III. Oil and Gas Transporters

¹⁸ Transporter OGRID	¹⁹ Transporter Name and Address	²⁰ O/G/W
214984	Plains Marketing LP 1734 Preston Rd., Suite 140, Dallas, TX 75252	O
372018	Longwood RB 5400 LBJ Freeway, Suite 1500, Dallas, TX 75240	G
NM OIL CONSERVATION ARTESIA DISTRICT OCT 11 2019 RECEIVED		

IV. Well Completion Data

²¹ Spud Date 5/25/2019	²² Ready Date 8/20/2019	²³ TD 10,758' 10,791'-15,626' ✓	²⁴ PBSD 15,535'	²⁵ Perforations 10,860'-15,493'	²⁶ DHC, MC -
²⁷ Hole Size	²⁸ Casing & Tubing Size	²⁹ Depth Set	³⁰ Sacks Cement		
17 1/2"	13 3/8"	362'	470		
12 1/4"	9 5/8"	2780'	1155		
8 3/4"	7 5/8"	10,659'	637		
6 3/4"	5 1/2"	15,622'	607		

V. Well Test Data

³¹ Date New Oil 8/20/2019	³² Gas Delivery Date 8/20/2019	³³ Test Date 8/25/2019	³⁴ Test Length 24	³⁵ Tbg. Pressure n/a	³⁶ Csg. Pressure 3050
³⁷ Choke Size 38/64	³⁸ Oil 1,004	³⁹ Water 3,491	⁴⁰ Gas 9,099		⁴¹ Test Method Flowing

⁴² I hereby certify that the rules of the Oil Conservation Division have been complied with and that the information given above is true and complete to the best of my knowledge and belief.

Signature:

Printed name:
Tammy R. Link

Title:
Production Analyst

E-mail Address:
tlink@matadorresources.com

Date:
10/9/2019

Phone:
575-623-6601

OIL CONSERVATION DIVISION

Approved by:

DENIED

Approve: **See Attached Cover Sheet**

* Htg. size & class

District I
1625 N. French Dr., Hobbs, NM 88240
Phone: (575) 393-6161 Fax: (575) 393-0720
District II
811 S. First St., Artesia, NM 88210
Phone: (575) 748-1283 Fax: (575) 748-9720
District III
1000 Rio Brazos Road, Aztec, NM 87410
Phone: (505) 334-6178 Fax: (505) 334-6170
District IV
1220 S. St. Francis Dr., Santa Fe, NM 87505
Phone: (505) 476-3460 Fax: (505) 476-3462

State of New Mexico **NM OIL CONSERVATION**
Energy, Minerals & Natural Resources **ARTESIA DISTRICT**
Department **OCT 11 2019**
OIL CONSERVATION DIVISION
1220 South St. Francis Dr. **RECEIVED**
Sante Fe, NM 87505

FORM C-102

Revised August 1, 2011

Submit one copy to appropriate

District Office

☐ AMENDED REPORT

WELL LOCATION AND ACREAGE DEDICATION PLAT

¹ API Number 30-015-45960		² Pool Code 98220		³ Pool Name Purple Sage-Wolfcamp (Gas)	
⁴ Property Code 325622		⁵ Property Name DR. SCRIVNER FED COM			⁶ Well Number #227H
⁷ GRID No. 228937		⁸ Operator Name MATADOR PRODUCTION COMPANY			⁹ Elevation 2987'

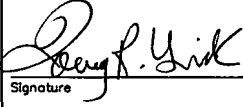
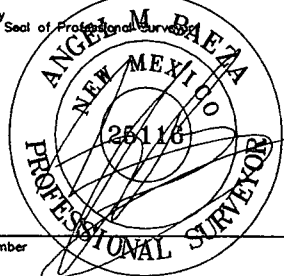
¹⁰Surface Location

UL or lot no.	Section	Township	Range	Lot Idn	Feet from the	North/South line	Feet from the	East/West line	County
I	1	24-S	28-E	-	2169'	SOUTH	573'	EAST	EDDY

UL or lot no.	Section	Township	Range	Lot Idn	Feet from the	North/South line	Feet from the	East/West line	County
L	1	24-S	28-E	-	1704'	SOUTH	246'	WEST	EDDY

¹² Dedicated Acres 320	¹³ Joint or Infill	¹⁴ Consolidation Code	¹⁵ Order No.
--------------------------------------	-------------------------------	----------------------------------	-------------------------

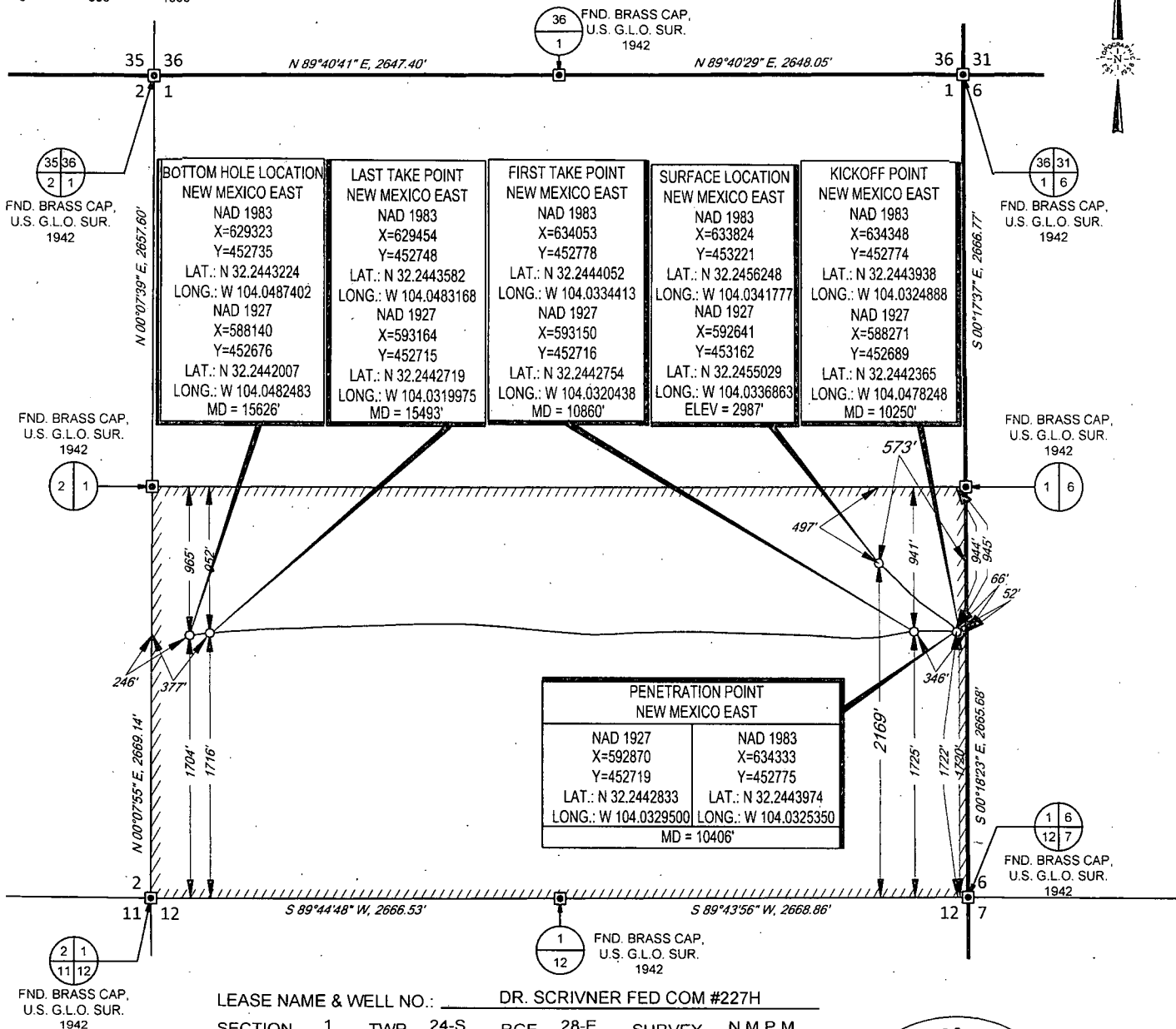
No allowable will be assigned to this completion until all interests have been consolidated or a non-standard unit has been approved by the division.

16 BOTTOM HOLE LOCATION NEW MEXICO EAST NAD 1983 X=629323 Y=452735 LAT.: N 32.2443224 LONG.: W 104.0487402 NAD 1927 X=588140 Y=452676 LAT.: N 32.2442007 LONG.: W 104.0482483 MD = 15626'	LAST TAKE POINT NEW MEXICO EAST NAD 1983 X=629454 Y=452748 LAT.: N 32.2443582 LONG.: W 104.0483168 NAD 1927 X=593164 Y=452715 LAT.: N 32.2442719 LONG.: W 104.0319975 MD = 15493'	FIRST TAKE POINT NEW MEXICO EAST NAD 1983 X=634053 Y=452778 LAT.: N 32.2444052 LONG.: W 104.0334413 NAD 1927 X=593150 Y=452716 LAT.: N 32.2442754 LONG.: W 104.0320438 MD = 10860'	SURFACE LOCATION NEW MEXICO EAST NAD 1983 X=633824 Y=453221 LAT.: N 32.2456248 LONG.: W 104.0341777 NAD 1927 X=592641 Y=453162 LAT.: N 32.2455029 LONG.: W 104.0336863 ELEV = 2987'	KICKOFF POINT NEW MEXICO EAST NAD 1983 X=634348 Y=452774 LAT.: N 32.2443938 LONG.: W 104.0324888 NAD 1927 X=588271 Y=452689 LAT.: N 32.2442365 LONG.: W 104.0478248 MD = 10250'	17 OPERATOR CERTIFICATION I hereby certify that the information contained herein is true and complete to the best of my knowledge and belief, and that this organization either owns a working interest or unleased mineral interest in the land including the proposed bottom hole location or has a right to drill this well at this location pursuant to a contract with an owner of such a mineral or working interest, or to a voluntary pooling agreement or a compulsory pooling order heretofore entered by the division.  Signature Date 10/9/2019 Printed Name Tlink@matadorresources.com E-mail Address
18 SURVEYOR CERTIFICATION I hereby certify that the well location shown on this plat was plotted from field notes of actual surveys made by me or under my supervision, and that the same is true to the best of my belief. 06/18/2019 Date of Survey  Signature and Seal of Professional Surveyor Certificate Number					19 PENETRATION POINT NEW MEXICO EAST NAD 1927 X=592870 Y=452719 LAT.: N 32.2442833 LONG.: W 104.0329500 MD = 10406' NAD 1983 X=634333 Y=452775 LAT.: N 32.2443974 LONG.: W 104.0325350 NAD 83 X=631739.90 Y=451041.50 NAD 27 X=690556.41 Y=450982.61 NAD 83 X=629073.40 Y=450970.85 NAD 27 X=587896.17 Y=453639.93 NAD 83 X=629079.55 Y=453698.84 NAD 27 X=587896.17 Y=453639.93 NAD 83 X=629079.55 Y=453698.84 NAD 27 X=593225.20 Y=450995.04 NAD 83 X=634408.74 Y=451053.97

SCALE: 1" = 1000'

0' 500' 1000'

SECTION 1, TOWNSHIP 24-S, RANGE 28-E, N.M.P.M.
EDDY COUNTY, NEW MEXICO



LEASE NAME & WELL NO.: DR. SCRIVNER FED COM #227H
SECTION 1 TWP 24-S RGE 28-E SURVEY N.M.P.M.
COUNTY EDDY STATE NM ELEVATION 2987'
DESCRIPTION 2169' FSL & 573' FEL



TOPOGRAPHIC
LOYALTY INNOVATION LEGACY

1400 EVERMAN PARKWAY, Ste. 146 • FT. WORTH, TEXAS 76140
TELEPHONE: (817) 744-7512 • FAX (817) 744-7554
2903 NORTH BIG SPRING • MIDLAND, TEXAS 79705
TELEPHONE: (432) 682-1653 OR (800) 767-1653 • FAX (432) 682-1743
WWW.TOPOGRAPHIC.COM



Angel M. Baeza, P.S. No. 25116
OCTOBER 8, 2019

DR. SCRIVNER FED COM
#227H (AS-COMPLETED)

REVISION:

INT

DATE

DATE: 10/08/19

FILE: AD_DR_SCRIVNER_FED_COM_227H

DRAWN BY: A.M.D.

SHEET: 1 OF 1

NOTES:

1. ORIGINAL DOCUMENT SIZE: 8.5" X 11"
2. ALL BEARINGS, DISTANCES, AND COORDINATE VALUES CONTAINED HEREIN ARE GRID BASED UPON THE NEW MEXICO STATE PLANE COORDINATE SYSTEM, EAST ZONE, U.S. SURVEY FEET, NORTH AMERICAN DATUM 1983.
3. CERTIFICATION IS MADE ONLY TO THE LOCATION OF THIS EASEMENT, IN RELATION TO THE EVIDENCE FOUND DURING A FIELD SURVEY, MADE ON THE GROUND, UNDER MY SUPERVISION, AND USING DOCUMENTATION PROVIDED BY MATADOR PRODUCTION COMPANY. ONLY UTILITIES/EASEMENTS THAT WERE VISIBLE ON THE DATE OF THIS SURVEY, WITHIN ADJOINING THIS EASEMENT, HAVE BEEN LOCATED AS SHOWN HEREON OF WHICH I HAVE KNOWLEDGE. THIS CERTIFICATION IS LIMITED TO THOSE PERSONS OR ENTITIES SHOWN ON THE FACE OF THIS PLAT AND IS NON-TRANSFERABLE, AND MADE FOR THIS TRANSACTION ONLY.

Intent ☐ As Drilled ☒

OCT 11 2019

RECEIVED

API # 30-01545960			Operator Name: Matedor Production Company			Property Name: Dr. SCRIVER Fed Com			Well Number 227H		
----------------------	--	--	--	--	--	---------------------------------------	--	--	---------------------	--	--

Kick Off Point (KOP)

UL I	Section 1	Township 24S	Range 28E	Lot 9	Feet 10250	From N/S S	Feet 66	From E/W E	County Eddy
Latitude 32.2443938					Longitude - 104.0324888				NAD 1983

First Take Point (FTP)

UL I	Section 1	Township 24S	Range 28E	Lot 9	Feet 10860	From N/S S	Feet 346	From E/W E	County Eddy
Latitude 32.2444052					Longitude - 104.0334113				NAD 1983

Last Take Point (LTP)

UL 2	Section 1	Township 24S	Range 28E	Lot 12	Feet 15493	From N/S S	Feet 377	From E/W 307	County Eddy
Latitude 32.2443582					Longitude - 104.0483168				NAD 1983

Is this well the defining well for the Horizontal Spacing Unit? ☐

Is this well an infill well? ☐

If infill is yes please provide API if available, Operator Name and well number for Defining well for Horizontal Spacing Unit.

API #		
Operator Name:	Property Name:	Well Number

KZ 06/29/2018